

Product datasheet for MR221166

Igln5 (NM_001164518) Mouse Tagged ORF Clone

Product data:

Product Type:	Expression Plasmids
Product Name:	Igln5 (NM_001164518) Mouse Tagged ORF Clone
Tag:	Myc-DDK
Symbol:	Igln5
Synonyms:	A230106M20Rik; Gm1431
Mammalian Cell Selection:	Neomycin
Vector:	pCMV6-Entry (PS100001)
E. coli Selection:	Kanamycin (25 ug/mL)
ORF Nucleotide Sequence:	>MR221166 representing NM_001164518 Red=Cloning site Blue=ORF Green=Tags(s)

TTTTGTAATACGACTCACTATAGGGCGGCCGGAATTCGTCGACTGGATCCGGTACCGAGGAGATCTGCC
GCC**CGATCGCC**

ATGCCCCCCTGCGCCCGGGCCCGGCTCCGGCTCCTCGCCGCCCGCCCTGGCCGGCTGGCCGTCA
TCAGCCGAGGGTTGCTGTCCAGAGCCTGGAGTTCAGCTCACCTGCGGACAATAACAGTGTGAAGG
TGACAACGCCACCCTCAGCTGCTTCATCGATGAGCATGTGACCCGGGTAGCCTGGCTGAACCGCTCAAC
ATCCTGTATGCGGGCAATGACCGTTGGACCAGTGATCCCCGGGTGCGGCTGCTCATCAACACACCCGAGG
AATTCTCCATCCTCATCACCCAGGTGGGGCTTGGTGATGAGGGCCTCTACACCTGTCTCCAGACCCG
CCACCAGCCCTACACCCTCAGGTCTACCTCATGTCCATGTCCCTGCCGTATTGTGAACATCTCCTCA
CCCGTGGCAGTGAATGAAGGGGCAATGTGAACCTTCTCTGCCTGGCTGTGGGAAGGCCAGAGCCCACTG
TCACCTGGAGACAGCTCCGAGACGGTTTACCTCAGAGGGTGAGATCCTGGAAATCTCAGACATCCAGCG
GGGCCAGGCCGGGAATACGAATGCGTTACTCACACGGAGTGAACCTCGGCGCCGACAGCCGCCGTGTG
CTGGTCACAGTGAATTATCCCCGACCATCACAGATGTGACAAGCGCGCACCCGCCCTGGGCCGGGCTG
CCCTCTGCGTGTGAAGCTATGGCTGTGCCCGCGCAGATTTCCAGTGGTACAAGGATGACAGGCTGT
AAGCAGCGGTTCTGCAGAGGGCCTCAAGGTGCAGACCGAGCGCACCCGCTCTATGCTTCTTCGCCAAC
GTGAGCGCCAGGCACTATGGCAACTACACCTGCCGTGCGGCCAACCGGCTCGGAGCGTCCAGCGCCTCCA
TGCGGCTCTGCGCCAGGATCCCTGGAGAACTCAGCTCCAAGGCTCCAGGGCCCTGACCCCTCTCTC
TGCCCTGAGCTGGCTGTGGTGGAGAATG

ACGCGTACGCGGCCGCTCGAGCAGAAACTCATCTCAGAAGAGGATCTGGCAGCAAATGATATCCTGGATT
ACAAGGATGACGACGATAAGGTTTAA



[View online »](#)

Protein Sequence: >MR221166 representing NM_001164518
 Red=Cloning site Green=Tags(s)

MPPPAPGARLRLAAAAAGLAVISRGLLSQSLEFSSPADNYTVCEGDNATLSCFIDEHVTRVAVLNRSN
 ILYAGNDRWTS DPRVRLINTPEEFSILITQVGLGDEGLYTCFSFQTRHQPYTTQVYLIVHVPARIVNISS
 PVAVNEGNNVLLCLAVGRPEPTVTWRQLRDGFTSEGEILEISDIQRGQAGEYECVTHNGVNSAPDSRRV
 LVTVNYPPITDVT SARTALGRAALLRCEAMAVPPADFWYKDDRLLSSGSAEGLKVQTERTRSMLLFAN
 VSARHYGNYTCRAANRLGASSASMRLLRPGLENSAPRPPGPLTLLSALSWLWWRM

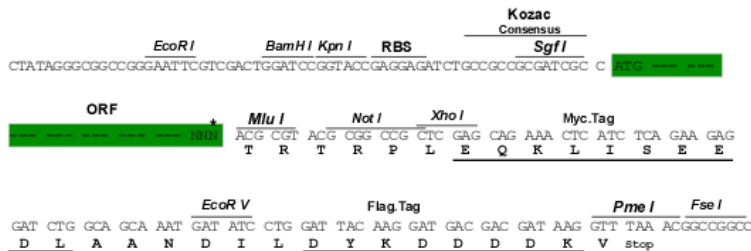
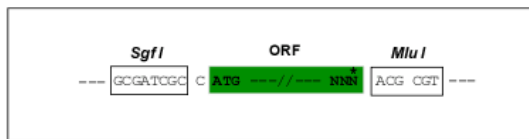
TRTRPLEQKLISEEDLAANDILDYKDDDDKV

Chromatograms: https://cdn.origene.com/chromatograms/mm9020_d02.zip

Restriction Sites: SgfI-MluI

Cloning Scheme:

Cloning sites used for ORF Shuttling:



* The last codon before the Stop codon of the ORF

ACCN: NM_001164518

ORF Size: 1008 bp

OTI Disclaimer: The molecular sequence of this clone aligns with the gene accession number as a point of reference only. However, individual transcript sequences of the same gene can differ through naturally occurring variations (e.g. polymorphisms), each with its own valid existence. This clone is substantially in agreement with the reference, but a complete review of all prevailing variants is recommended prior to use. [More info](#)

OTI Annotation: This clone was engineered to express the complete ORF with an expression tag. Expression varies depending on the nature of the gene.

Components: The ORF clone is ion-exchange column purified and shipped in a 2D barcoded Matrix tube containing 10ug of transfection-ready, dried plasmid DNA (reconstitute with 100 ul of water).

Reconstitution Method:

1. Centrifuge at 5,000xg for 5min.
2. Carefully open the tube and add 100ul of sterile water to dissolve the DNA.
3. Close the tube and incubate for 10 minutes at room temperature.
4. Briefly vortex the tube and then do a quick spin (less than 5000xg) to concentrate the liquid at the bottom.
5. Store the suspended plasmid at -20°C. The DNA is stable for at least one year from date of shipping when stored at -20°C.

RefSeq: [NM_001164518.2](#)

RefSeq Size: 2567 bp

RefSeq ORF: 1011 bp

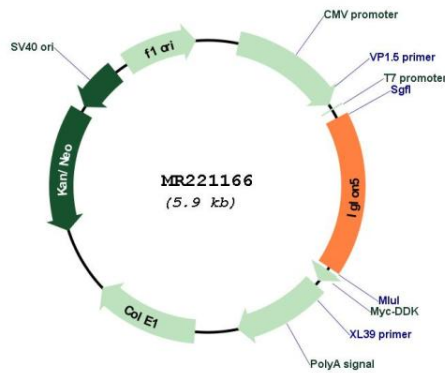
Locus ID: 210094

UniProt ID: [Q8HW98](#)

Cytogenetics: 7 B3

MW: 37.2 kDa

Product images:



Circular map for MR221166