

Product datasheet for **MR221144**

Gpcpd1 (NM_001042672) Mouse Tagged ORF Clone

Product data:

Product Type:	Expression Plasmids
Product Name:	Gpcpd1 (NM_001042672) Mouse Tagged ORF Clone
Tag:	Myc-DDK
Symbol:	Gpcpd1
Synonyms:	2310004G06Rik; 2310032D16Rik; AU015213; Gde5; mKIAA1434; Prei4
Vector:	pCMV6-Entry (PS100001)
E. coli Selection:	Kanamycin (25 ug/mL)
Cell Selection:	Neomycin



[View online »](#)

ORF Nucleotide Sequence:

>MR221144 representing NM_001042672
 Red=Cloning site Blue=ORF Green=Tags(s)

TTTTGTAATACGACTCACTATAGGGCGGCCGGAATTCGTCGACTGGATCCGGTACCGAGGAGATCTGCC
 GCC**CGCATCGCC**

ATGACACCTTCTCAGGTCACTTTTGAATAAGAGGAAGTCTTTTACCAGGAGAGGCTTTTGCATATGTG
 GAAGCTGTGATGCCCTGGGAACTGGAATCCTCAAATGCTGTGGCTCTTATTAATGAAAACGAGACAGG
 AGACAGTGTGTTGTGAAAGCAGTGATTGCTCTCAATAGAGGAGTGTGAGTGAAGTACCGTACTTCAGA
 GGCTGCTTTTGAACCAAAGACTATCGGTGGTCCATGTCAAGTCATAGTTCACAAGTGGGAGACTCATC
 TACAACCACGATCAATAACCCCTTTAGAAAGTGAATCATTATTGACGATGGACAGTTTGGCATCCACAA
 TGGTGTGAAACACTGGATTCTGGATGGCTTACATGTCAGACTGAAATAAGATTGCGTCTGCATTTTTCT
 GAGAAACCTCCTGTTCAATTAGCAAGAAAAAGTTCAAAAAATCGAGATTAGGGTAAAGCTCACACTCG
 AGGGTCTGGAGGAAGATGAAGATGATGACGATAAGGTCTCTCCACTGTTCTTCAAAAATGTCCAA
 CAGCCTGGAGATATCCTTAATAAGTGACAATGAGTTCAAGTGCAGGCACTCACAGCCAGAATGTGGGTAT
 GGCTTACAGCCCGATCGTTGGACAGAGTACAGCATACAGACAATGGAACCCAGATAATCTGGAGCTCATCT
 TTGACTTTTTTGGGAAGATCTCAGTGAGCATGTAGTTCAGGGTGTGTTCTTCTGACACGTGGGCAC
 AGCATGCCTCCTGCTTCTACCATTGCTGAGAGTGAAGAAGCGCTGGAATCCTTACTCTTCCCATCATG
 AGCAGAAATCCAGAAAACTATAGGCAAAGTCAGAGTTGATTTTATCATCATCAAGCCATTACCTGGAT
 ATAGTTGTTCTATGCAGTCTTCATTTTCCAAGTATTGGAAACCAAGAATACCATTGGACGTTGGACATCG
 TGGTGCAGGGAAGTCAACAACGACTGCCAAGCTAGCTAAAGTACAGGAAAATACTATCGCTTCTTTAAGA
 AATGCTGCCAGTATGGCGCAGCATTGTAGAAATTTGATGTCCACCTTTCAAAGGACTTTGTGCCCGTGG
 TGTATCATGACCTCACCTGCTGTCTGACCATGAAGAGGAAATATGAAGCTGATCCAGTTGAATTGTTTGA
 AATCCCGTAAAAGAATTAACATTTGACCAACTCCAGTTATTGAAGCTTTCTCATGTGACTGCATTAATA
 ACCAAAGACCGGAAACAATCTTTGTATGAGGAGGAAAATTTCTTTTCTGAAAATCAGCCATTTCTTCTC
 TTAAGATGGTTTTAGAATCATTGCCAGAAAATGTAGGATTTAATATAGAAATAAAATGGATTTGCCAACA
 CAGGGATGGAGTATGGGATGGCAACTTATCAACATATTTTGTATGAATGTGTTTTGGATATAATTTTA
 AAAACTGTTTTAGAAAATCTGGGAAGAGGAGAATAGTGTCTTCTTTTGTGTCAGATATTTGTACAA
 TGGTTCGGCAGAAGCAGAAACAAATATCCCATATTTATTTTGAACCAAGGAAAGTCTGATATTTACCCGA
 ACTCATGGACCTCAGATCTCGACAACACCCATTGCAATGAGTTTGCACAGTTTAAAAATTTTGGGG
 ATAAATGCCCATACTGAAGACCTCCTTAGAAACCCATCCTATGTCCAAGGGCAAAGCTAAGGGATTGG
 TCATATTCGCTGGGGTATGATACCAACGATCCTGAAAACAGAAGGAAACTGAAGGAATTTGGAGTAAA
 TGGTCTAATATATGATAGGTATTTGTTTTTCATAAAAAATTTCCATGGAATTTTTCAAAAAGTA

ACGCGTACGCGGCCGCTCGAGCAGAAACTCATCTCAGAAGAGGATCTGGCAGCAAATGATATCCTGGATT
 ACAAGGATGACGACGATAAGGTTTAA

Protein Sequence:

>MR221144 representing NM_001042672
 Red=Cloning site Green=Tags(s)

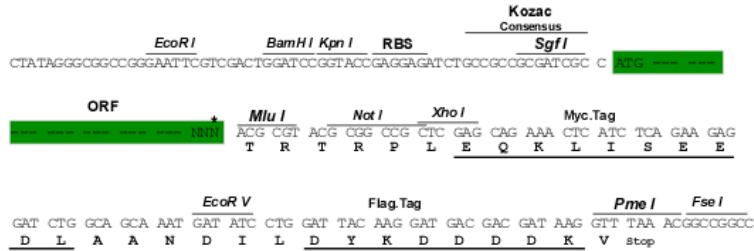
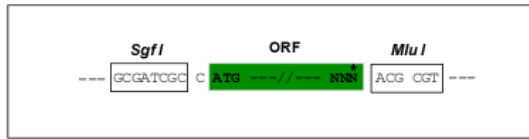
MTPSQVTFEIRGTLTPGEVFAICGSCDALGNWNPQNAVALINENETGDSVLWKAVIALNRGVSVKYRYFR
 GCFLEPKTIGGPCQVIVHKWETHLQPRSIPTLESEIIDDGQFGIHNGVETLDSGWLTCQTEIRLRLHFS
 EKPPVVISKFKKSRFRVKTLEGLEDEDDDDKVSPTVLHKMSNSLEISLISDNEFKRHSQPECGY
 GLQPDRTWEYSIQTMEDPNLELIFDFEEDLSEHVQGDVLPGHVGTACLLSSTIAESGRSAGILTLPIM
 SRNSRKTIGKVRVDFIIKPLPGYSCSMQSSFSKYWKPRIPLDVGHGAGNSTTTAKLAKVQENTIASLR
 NAASHGAAFVEFDVHLSKDFVPVYVYHDLTCLTMKRKYEADPVELFEIPVKELTFDQLQLLKLSHVTALK
 TKDRKQSLYEEENFFSENQPFPSLKMVLESLPENVGFNIEIKWICQHRDGVWDGNLSTYFDMNVFLDIIL
 KTVLENSGKRRIVFSSFDADICTMVRQKQNKYPILFLTQKSDIYPELMDLRSRTTPIAMSAQFENILG
 INAHTEDLLRNPSYVQEAkakGLVIFCWGDDTNDPENRRKLKEFGVNGLIYDRYLFFIKNFHGIFQKV

TRTRPLEQKLISEEDLAANDILDYKDDDDKV

Restriction Sites: SgfI-MluI

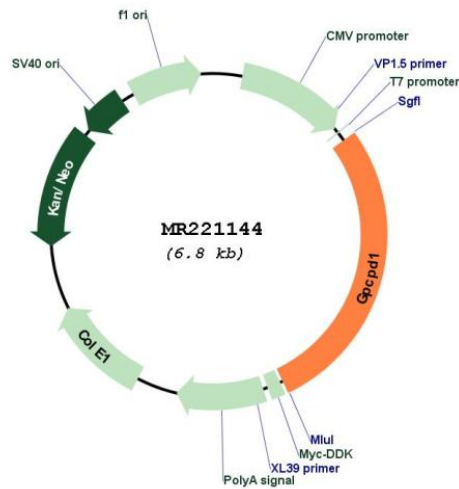
Cloning Scheme:

Cloning sites used for ORF Shutting:



* The last codon before the Stop codon of the ORF

Plasmid Map:



ACCN: NM_001042672

ORF Size: 1884 bp

OTI Disclaimer:	The molecular sequence of this clone aligns with the gene accession number as a point of reference only. However, individual transcript sequences of the same gene can differ through naturally occurring variations (e.g. polymorphisms), each with its own valid existence. This clone is substantially in agreement with the reference, but a complete review of all prevailing variants is recommended prior to use. More info
OTI Annotation:	This clone was engineered to express the complete ORF with an expression tag. Expression varies depending on the nature of the gene.
Components:	The ORF clone is ion-exchange column purified and shipped in a 2D barcoded Matrix tube containing 10ug of transfection-ready, dried plasmid DNA (reconstitute with 100 ul of water).
Reconstitution Method:	<ol style="list-style-type: none"> 1. Centrifuge at 5,000xg for 5min. 2. Carefully open the tube and add 100ul of sterile water to dissolve the DNA. 3. Close the tube and incubate for 10 minutes at room temperature. 4. Briefly vortex the tube and then do a quick spin (less than 5000xg) to concentrate the liquid at the bottom. 5. Store the suspended plasmid at -20°C. The DNA is stable for at least one year from date of shipping when stored at -20°C.
RefSeq:	NM_001042672.1 , NP_001036137.1
RefSeq Size:	3392 bp
RefSeq ORF:	1887 bp
Locus ID:	74182
Cytogenetics:	2
MW:	71.8 kDa
Gene Summary:	May be involved in the negative regulation of skeletal muscle differentiation, independently of its glycerophosphocholine phosphodiesterase activity.[UniProtKB/Swiss-Prot Function]