

## Product datasheet for **MR221082**

### **Dbn1 (NM\_001177372) Mouse Tagged ORF Clone**

#### **Product data:**

Product Type:	Expression Plasmids
Product Name:	Dbn1 (NM_001177372) Mouse Tagged ORF Clone
Tag:	Myc-DDK
Symbol:	Dbn1
Mammalian Cell Selection:	Neomycin
Vector:	pCMV6-Entry (PS100001)
E. coli Selection:	Kanamycin (25 ug/mL)



[View online »](#)

ORF Nucleotide  
Sequence:

>MR221082 representing NM\_001177372  
Red=Cloning site Blue=ORF Green=Tags(s)

TTTTGTAATACGACTCACTATAGGGCGGCCGGAATTCGTCGACTGGATCCGGTACCGAGGAGATCTGCC  
GCCCGCATCGCC

ATGGCCGGCGTCAGCTTCAGCGGCCACCGCTGGAGCTGCTGGCGGCGTACGAGGAGGTGATCCGGGAGG  
AGAGCGCAGCCGACTGGGCTCTGTACACATACGAGGATGGCTCAGATGACCTCAAGCTTGCAGCGTCAGG  
AGAAGGGGGCTTGCAGGAGCTTCCGGCCACTTCGAGAACCAGAAAGTATGATGATGGTTTCTGCAGCGTC  
AAGGACTCCCAAGCTGCCCTGCCAAAATATGTGCTCATCAACTGGGTTGGTGAGGATGTGCCTGATGCC  
GAAAATGTGCTTGCAGCAGTGTGTGGCCAAGGTGGCTGAATTCTCCAGGGTGTGATGTCATTGTGAA  
TGCCAGCAGTGTGAAGACATCGATGCTGGTGCCATTGGGCAGCGGCTCTCCAATGGACTGGCACGGCTC  
TCCAGCCCAGTATTGCACCGCTGCGCCTTCGGGAGGATGAAAATGCTGAACCGTGGGTACCACCTACC  
AGAAGACGGATGCAGCAGTGGAGATGAAGCGGATTAACCGTGAGCAGTTTTGGGAGCAGGCCAAGAAGGA  
GGAAGAGCTGCGGAAGGAGGAGGAGCGGAAGAAGGCTCTGGACGCCAGGCTCAGGTTTGAACAGGAACGG  
ATGGAGCAGGAGCGGCAGGAGCAGGAAGAAGCTGAGCGGCGCTACCGGGAGCGGGAGCAGCAGATTGAGG  
AGCACAGGAGGAAACAGCAGAGTCTGGAAGCTGAAGAAGCCAAGAGGAGGTTAAAGGAGCAGTCTATCTT  
TGGTGACCAGCGGGATGAAGAGGAAGAGTCCCAGATGAAGAAGTCGGAGTCAGAGGTGGAGGAGCGGCT  
GCCATCATTGCCAGCGGCTGATAACCCACGGGAGTTCTTCAGACAGCAGGAACGAGTGGCATCGGCT  
CTGGTGGCAGCTGTGACGCGCTGCGCCTGCACCTTCAACCACCGACCAGGCAGCCACCTGGACAGCCA  
CCGGAGGATGGCACCCTCCTATTCCCACCGGAGCCCATCTGATTCCAGCACAGCCTTACCCCCATC  
GCTGAGCAGATCGAGAGGGCCCTGGATGAGGTACATCCTCGCAGCCTCCACCTCCACCTCCACCACCTC  
CACCAACTCAAGAGGCCAGGAGACTACCCCAAGCCTGGATGAAGAGCTCAGCAAGGAGGCCAAAGTAAC  
AGCAGCTCCTGAGGTCTGGGCTGGCTGTGCGGCAGAGCCCCCTCAGGCACAGGAACCTCCCCTGTTGCAA  
AGCAGCCCCCTGGAGGACTCGATGTGCACAGAATCTCCAGAGCAGGCTGCCCTGGCTGCCCTGCGGAGC  
CTGCTGCCTCTGTACCTCAGTAGCTGATGTCCATGCAGCTGACACCATTGAGACCACCTGCCACTAC  
TGACACCCTATTGCCAACACGTACCCCTGCCGCTGCCAGCCTCATTGATCTATGGCCTGGCAACGGG  
GAAGAGGCTCAACACTTCAGGCTGAACCCAGGGTGCCACACCACCTCAGGTGCTGAGGCTCCCTGG  
CAGAGGTGCCCTGCTGAATGAGGCGCTCAGGAGCCGCTGCCGCGGTAGGCGAAGGCTGTGCTAACCT  
TCTTAATTTTATGAGCTGCCAGAACCTCCAGCCACCTTCTGTGACCCAGAGGAGGAAGTAGGAGAAACG  
CTGGCTGCCTCCAGGTCTAATATGCCCTCAGCTCTAGAGGAGGTAGATCAGGTGCTGGAGCAGGAGC  
TGGAGCCAGAACCTCACCTGCTGACCAATGGAGAGACCTCAAAAGGAGGGGACCCAGCAGGCCAGCGA  
AGGATACTTCAGTCAGTCACAGGAGGAAGATTCGCCAATCAGAAGAGCCATGTGCAAAGGTTCCGCT  
CCTGTATTTTACAACAAGCCTCCAGAAATCGACATCACCTGCTGGGATGCAGACCAGTTCTGAAGAGG  
AAGAGGGCTTCGAGGGTGGTAT

ACGCGTACGCGGCCGCTCGAGCAGAACTCATCTCAGAAGAGGATCTGGCAGCAATGATATCCTGGATT  
ACAAGGATGACGACGATAAGGTTTAA

**Protein Sequence:** >MR221082 representing NM\_001177372  
Red=Cloning site Green=Tags(s)

```
MAGVSFSGHRLELLAAYEEVIREESAADWALTYEDGSDDLKLAASGEGGLQELSGHFENQKVMYGFCSV
KDSQAALPKYVLINWVGEDVPDARKCACASHVAKVAEFFQGVDIVNASSVEDIDAGAIGQRLSNGLARL
SSPVLHRLRLREDENAEPVGTTYQKTDAAVEMKRINREQFWEQAKKEEELRKEEERKKALDARLRFEQER
MEQERQEERERRREREREQQIEEHRRKQSQLEAEEAKRRLKEQSIFGDQRDEEEESQMKKSESEVEEAA
AIIAQRPDNPREFFRQQERVASASGGSCDAPAPFNFHRPGSHLDSHRRMAPTPIPTRSPSDSSTASTPI
AEQIERALDEVTSSQPPPPPPPPPTQEAQETTPSLDEELSKAKVTAAPVWAGCAAEPQAQEPPLLQ
SSPLEDSMCTESPEQAALAAPAEPAAASVTSVADVHAADTIETTTATDITIANNVTPAAASLIDLWPGNG
EEASTLQAEPRVTPPSGAEASLAEVPLLNEAAQEPLPPVGECCANLLNFDELPEPPATFCDEPEEVGET
LAASQVLTPMSALEEVDQVLEQELEPEPHLLTNGETTQKEGTQQASEGYFSQSQEEFFAQSEEPKAVPP
PVFYNKPEIDITCWDADPVPEEEEGFEGGD
```

TRTRPLEQKLISEEDLAANDILDYKDDDDKV

**Restriction Sites:**

SgfI-MluI

**Cloning Scheme:**



**ACCN:** NM\_001177372

**ORF Size:** 1983 bp

**OTI Disclaimer:** The molecular sequence of this clone aligns with the gene accession number as a point of reference only. However, individual transcript sequences of the same gene can differ through naturally occurring variations (e.g. polymorphisms), each with its own valid existence. This clone is substantially in agreement with the reference, but a complete review of all prevailing variants is recommended prior to use. [More info](#)

**OTI Annotation:** This clone was engineered to express the complete ORF with an expression tag. Expression varies depending on the nature of the gene.

**Components:** The ORF clone is ion-exchange column purified and shipped in a 2D barcoded Matrix tube containing 10ug of transfection-ready, dried plasmid DNA (reconstitute with 100 ul of water).

**Reconstitution Method:**

1. Centrifuge at 5,000xg for 5min.
2. Carefully open the tube and add 100ul of sterile water to dissolve the DNA.
3. Close the tube and incubate for 10 minutes at room temperature.
4. Briefly vortex the tube and then do a quick spin (less than 5000xg) to concentrate the liquid at the bottom.
5. Store the suspended plasmid at -20°C. The DNA is stable for at least one year from date of shipping when stored at -20°C.

**RefSeq:** [NM\\_001177372.1](#), [NP\\_001170843.1](#)

**RefSeq Size:** 2909 bp

**RefSeq ORF:** 1986 bp

**Locus ID:** 56320

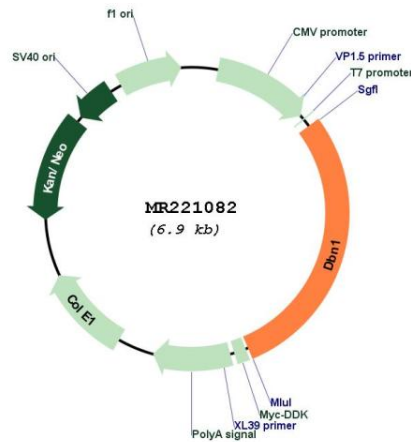
**UniProt ID:** [Q9QXS6](#)

**Cytogenetics:** 13 30.06 cM

**MW:** 73 kDa

**Gene Summary:** Actin cytoskeleton-organizing protein that plays a role in the formation of cell projections (By similarity). Required for actin polymerization at immunological synapses (IS) and for the recruitment of the chemokine receptor CXCR4 to IS (By similarity). Plays a role in dendritic spine morphogenesis and organization, including the localization of the dopamine receptor DRD1 to the dendritic spines (PubMed:25865831). Involved in memory-related synaptic plasticity in the hippocampus (PubMed:25865831).[UniProtKB/Swiss-Prot Function]

### Product images:



Circular map for MR221082