

Product datasheet for MR221067

Tacc2 (NM_206856) Mouse Tagged ORF Clone

Product data:

Product Type:	Expression Plasmids
Product Name:	Tacc2 (NM_206856) Mouse Tagged ORF Clone
Tag:	Myc-DDK
Symbol:	Tacc2
Synonyms:	mKIAA4180
Vector:	pCMV6-Entry (PS100001)
E. coli Selection:	Kanamycin (25 ug/mL)
Cell Selection:	Neomycin
ORF Nucleotide Sequence:	>MR221067 representing NM_206856 Red=Cloning site Blue=ORF Green=Tags(s)

TTTTGTAATACGACTCACTATAGGGCGGCCGGAATTCGTCGACTGGATCCGGTACCGAGGAGATCTGCC
GCC**CGATCGC**C

ATGGGCAACGAGAACAGCACCTCGGACCACCAGAGGACTTCTTCAGTTCAGAGTCCAAGGTCAGTGCAGC
CACCTGGGAAGAGTCAATCTCTACAGAAGCAACAAGGAGACTTGCCTGGATCGTGTGCTGGAAGTATCCC
TGGAACTGATGATGTCATCCAGCCAGCTGCTCCTGTTGACCCGGGACACCCACCTTAGCTGACTCGTCC
CACCATGGTGACGCTGTCAGCTCAGTCTCTACACATCTGACAGTCCAGAGCGCCTCCCCATCTGCTGCC
GTGCAAGTCTGCTCCTTTGGCCCCAGAACATACAGCCTCGGCTCCCTCCGCAGCCGGTCTGGAGTAGA
AGTCACCCCCACTGCCTCCCCAACACCTGGCCAAGAACGAACCCAGGAGTTCCGACTCTGAGGAAGCC
TTTGAGACCCCCGAGTCAACGACCCCTGTCAAAGCTCCACCAGCCCTCCCCCTCACCCCTGAAGTCA
CCCCAGAGCCTGAGGTATCGATCCACCAGCCCCAGAAGAACCAGGATGCATTTCTGAGCCACCGGTTGT
GGTTCCCGATGGCCCTCGCAGCAGCGAGTCCGTGGAAGGAAGCCCTTCCGTCTTCCACTCCTCCTCG
GCGGTGTTTCGATGAAGACAAGCCGATAGCCAGCAGCGGGACTTACAACCTAGACTTCGACAGCATCGAGC
TGGTGGATAACTCCAGAGCTTGGAGCCGTGCTCTGCCGACTTAAGGGTCAGGAGTGAAGGTGAGCAG
CGGAGGAAATCCACCGAGTCCGTGCCACCTCCAAGTCCAGCTGTCCGTTTCGCTTAGCCTACAAGCC
AGTGACTTTGACGGTGCTTCTTGCCCCGCGAGCCCTGAAGCTGGGACCCCTTACCACAGATGCATGTGGCA
CAGGATCCAACAGTGCTTCCAGCACCCCTTAAGCGAACTAAAAAACACGGCCACCTTCTTGAAAAAGAA
GCAAGCCACCAAGAAACCCACAGAAACCCCCAGTGAAGGAGACCCAACAGGAACAGGTGAAGAGAGT
CCAGTCCCCAGTGAGGAACACTTAGCACAGAGACAAAGACGGAGTCGGCCACACCTGAGGGCGCTGGTT
GCACCTTGTGACAGGATACACCCCTGGAGTCCCCTGCTGTCCCCACAGCCACCTGTCTCTGACTTTGGA
GAGTGCAGAAGACGTTAGCCCCCTGGTTTCTGGAGGTGGCAGAGTGCAGAACTCACCCCAAGTTGGGAGG
AAATCAGTGCCTCTTACCACAGCCTCTGAGGCGGTGGAGGTGACCCTGTCCGACAGTGGGGGCAAGAGG
ACTTGCCTGCCAAGGGGTTGTCAGTGGAGCTGGAGTTTACTATTCTGAGGACAAGGGAAGTTGGGAGAG
TCAGCAGGAAAACGCCCTCCCACCAAAAAGATAGGCAAGAAGCCAGTTGCCAAAATGCCCTAAGGAGG
CCAAAGATGAAAAGACCCCGAGAACTTGACAACACTCCTGCCTCACCTCAAGGTCCCTACTGAAC



CCAGTGACACCCCTATTGCTAAAGGTACCTACACCTTTGATATAGACAAGTGGGATGACCCCAATTTTAA
CCCTTTTTCTCCACCTCAAAAATGCAAGAGTCTCCCAAAGTGTCCCAACAATCGTACAACCTTTGACCCCT
GACGCCTGTGAAGAGTCCCTTGACCCCTTAAGGCATCCTCTAAGACCCCGACTCACCTTCTAAGTCCC
CAGCCTCTTTTGAGATCCCAGCCAGCACCGAAGCGGATGGGATGGGTTGAATAAACCTGCCAAGAA
GAAGAAGACTCCACTAAGACGATGGTTGAAGATGTGATGTCTGTGTCTCTCTGTTTGACACGTTTAGG
GTGAAGAAGTCTCAAAGCGGTCTCTCTGTCTGACCCGCCTTCTCAGGACCCCACTCCAGTCCACGC
CGGAAGCACCCCTCAGCCATCTCTACAGTGGTCCACGCCACAGATGAGGAGAAGCTGGCAGTCACTAGCCA
GAAGTGGACGTGTATGACGGTGGACTTGGATGCTGACAAAACAGGACTTCCCTCAGCCCTCGGACCTGTCT
AACTTTGTAAATGAGACCAAATTAATTCAACCCTCAGAGGAGCTGGACTACAGAACTCCTATGAAATTG
AATACATGAAAAAGCTTGGCTCCTCCTTACCTCAGGACGATGACACTCCGAAAGAAGCAGGCCTTGTACCT
TATGTTTGACACTCCTCAGGAGAGCCCCGTCAAGTCTCCTCCAGTCCGGATGTCAGATCCCCAACCTCCA
TGTTCCAGGTCGAGTTTTGAGGACACCGAAGCCCTTGTGAATGCAGCAACAAAGCTCCAGCATCCAGTCC
CAAGAGGTCTGCCCTCCAGTCCAGGACCTCTCTGACGGTGCCTGAGAAGCCCTCCAGAAGGAGCTGGA
GGCCATGGCCTTGGGCACCCAGCAGAAGCAATTGAAATCACAGTCCCAGGGTGCCTTTGCTTCTGCA
GATACCCTCCTCAGCAGGCTGGCCATCCCGCCTCTCTGTGGTGCCTGGCTATCTGGAGCCTGACT
TAGCAGAAAAGAACCCCAAGTATTTGCCAGAAACTTACAGGAGGAGTTAGAGTTTGCTGTCTATGCCGAT
AGAAGCCCTGAAGCTGGCCAGGCAGATCGCCCTGGCTTCCCGCAGCCGCCAGGACACCAAGAGGGAGCT
GCTCACCCACCAGATGTCTCCATCTCAAAAAGTGCCTTGTACTCCCGCATCGGGTCCACCCAGGTGGAGA
AACCCCAAGGCCTTCTGTTCCAGCAGCCAGACCTGGACTCTGCACTCCAGGTTGCCAGAGCAGAGGTCAT
CGCCAAGGAGAGAGAAGTCTCAGAGTGGAGGGATAAATATGAAGAAAGCCGACGGGAAGTGGTGGAAATG
AGGAAAATTGTGGCCGAATATGAGAAGACCATTGCACAGATGATCGAGGACGAACAGAGAGAAAAATCCA
TCTCCCACTCAACTGTACAGCAGCTGGTCTGGAGAAGGAGCAAGCCCTGGCTGACCTGAACCTGTGGA
AAAGTCTCTGGCTGACCTCTTCCAGGAGATACGAAAAGATGAAGGAGGTCCTGGAAGTTTTGAAAGAAT
GAAGAGGTGTTGAAGAAATGTGCCAGGAGTACCTATCCCGAGTGAAGAAAGAGGAACAGAGGTACCAGG
CCCTGAAGGTGCACGCCGAAGAGAACTGGACAGAGCCAATGCAGAGATTGCCAGGTTCCGCGCAAGGC
CCAGCAAGAGCAAGCAGCCTACCAGGCTAGCCTGCGGAAGGAGCAGCTTCGAGTGGATGCTCTGAAAGA
ACGCTGGAGCAGAAGAATAAAGAGATAGAAGAAGTACCACCAAGATTTGTGACGAGCTGATCGCCAAGATGG
GAAAAAGC

ACGCGTACGCGGCGCTCGAGCAGAACTCATCTCAGAAGAGGATCTGGCAGCAATGATATCCTGGATT
ACAAGGATGACGACGATAAGGTTTAA

Protein Sequence: >MR221067 representing NM_206856
 Red=Cloning site Green=Tags(s)

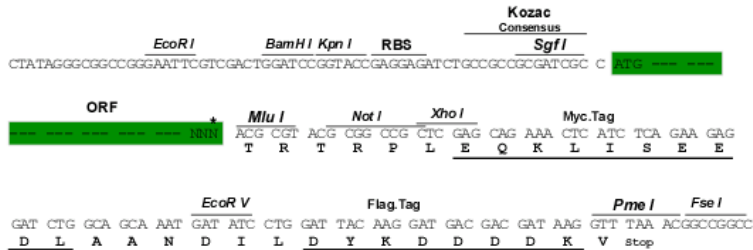
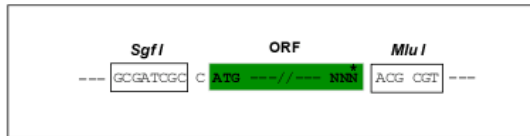
MGNENSTSDHQRTSSVQSPRSLQPPGKSQSLKQKQGDLPGSCAGSIPGTDDVIQPAAPVDPGHPPLADSS
 HHGDAVSSVSTHLTVQSASPSAARASAPLAPEHTASAPSAAGPGVEVPTASPQHLAKNEPRSSDSEEA
 FETPESTTPVKAPPAPPPPPPEVTPPEVIDPPAPEEPGCISEPPVVVPDGRSSSEVSGSPFRPSHSSS
 AVFDEDKPIASSGTYNLDFDSIELVDNFQSLPEPCADSCKGQECKVSTRRKSTESVPPSKSTLSRSLSLQA
 SDFDASCPGSPEAGLTTDACGTGSNSASSTLKRTRPPSLKQKQATKKTPTTPPVKETQQEPGEEES
 PVPSEEHLAPETKTESATPEGAGCTLSDDTPLSPAAPTATCPLTLESAEDVSPLVSGGGRVQNSPPVGR
 KSVPLTTASEAVEVTLSDSGGQEDLPAKGLSVRLEFDYSEDKGSWESQENAPPTKIGKPVAKMPLRR
 PKMKKTPEKLDNTPASPPRSPTPSDTPIAKGYTFDIDKWDPNFNPFSSSTSKMQESPKLSQQSYNFDP
 DACEESLDPFKASSKTPSSPSKSPASFEIPASTTEADGDGLNKPAAKKTPLKTMVEDVMSVCSLFDTFR
 VKKSPKRSPLSDPPSQDPTPAATPEAPSAISTVVHATDEEKLAVT SQKWT CMTVDLDADKQDFPQPSDLS
 NFVNETKFNSPSEELDYRNSYEIEYMEKLGSSLPQDDDTPKKQALYLMFDTQPESPVKSPVVRMSDSPTP
 CSGSSFEDTEALVNAATKLQHPVARGLPSSQEPLLQVPEKPSQKELEAMALGTPAEAEIETAPEGAFASA
 DTLRLAHPASLCGALGYLEPDLAEKNPPVFAQKLQEELEFAMVRIEALKLARQIALASRSRQDTKREA
 AHPPDVSISKALYSRIGSTEVEKPPGLLFQQPDLSALQVARAEVIAKEREVSEWRDKYEE SRREVEM
 RKIVAEYEKTI AQMI EDEQREKSI SHQTVQQLVLEKEQALADLNSVEKSLADLFRRYEKMKVELEGFRKN
 EEVLKKAQEYL SRVKKEEQRYQALKVHAEKLD RANA EIAQVRGKAQQEQAAYQASLRKEQLRVDALER
 TLEQKNKEIEELTKICDELI AKMGKS

TRTRPLEQKLISEEDLAANDILDYKDDDDKV

Restriction Sites: SgfI-MluI

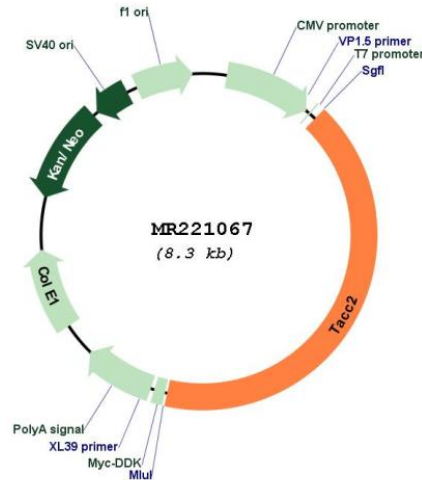
Cloning Scheme:

Cloning sites used for ORF Shutting:



* The last codon before the Stop codon of the ORF

Plasmid Map:



ACCN: NM_206856

ORF Size: 3438 bp

OTI Disclaimer: The molecular sequence of this clone aligns with the gene accession number as a point of reference only. However, individual transcript sequences of the same gene can differ through naturally occurring variations (e.g. polymorphisms), each with its own valid existence. This clone is substantially in agreement with the reference, but a complete review of all prevailing variants is recommended prior to use. [More info](#)

OTI Annotation: This clone was engineered to express the complete ORF with an expression tag. Expression varies depending on the nature of the gene.

Components: The ORF clone is ion-exchange column purified and shipped in a 2D barcoded Matrix tube containing 10ug of transfection-ready, dried plasmid DNA (reconstitute with 100 ul of water).

Reconstitution Method:

1. Centrifuge at 5,000xg for 5min.
2. Carefully open the tube and add 100ul of sterile water to dissolve the DNA.
3. Close the tube and incubate for 10 minutes at room temperature.
4. Briefly vortex the tube and then do a quick spin (less than 5000xg) to concentrate the liquid at the bottom.
5. Store the suspended plasmid at -20°C. The DNA is stable for at least one year from date of shipping when stored at -20°C.

RefSeq: [NM_206856.4](#)

RefSeq Size: 3906 bp

RefSeq ORF: 3441 bp

Locus ID: 57752

UniProt ID: [Q9JIG0](#)

Cytogenetics: 7 F3

MW: 124.4 kDa

Gene Summary: This gene encodes a member of the transforming, acidic coiled-coil (TACC) family of proteins. Members of this family are centrosomal proteins that interact with microtubules and tubulin. TACC proteins are thought to be involved in centrosome/mitotic spindle dynamics and gene regulation. Alternative splicing of this gene results in multiple transcript variants encoding different isoforms. [provided by RefSeq, Jul 2008]