

Product datasheet for **MR220976**

Mid1 (NM_183151) Mouse Tagged ORF Clone

Product data:

Product Type:	Expression Plasmids
Product Name:	Mid1 (NM_183151) Mouse Tagged ORF Clone
Tag:	Myc-DDK
Symbol:	Mid1
Synonyms:	61B3-R; DXHXS1141; Fxy; Trim18
Mammalian Cell Selection:	Neomycin
Vector:	pCMV6-Entry (PS100001)
E. coli Selection:	Kanamycin (25 ug/mL)



[View online »](#)

ORF Nucleotide
Sequence:

>MR220976 representing NM_183151
 Red=Cloning site Blue=ORF Green=Tags(s)

TTTTGTAATACGACTCACTATAGGGCGGCCGGGAATTCGTCGACTGGATCCGGTACCGAGGAGATCTGCC
 GCC**CGGATCGCC**

ATGGAACACTGGAGTCGGAGTGACCTGTCTATTTGTCTGGAGCTTTTGGAGACCCTCTCTGCTTC
 CCTGCGCACATAGCCTCTGCTTCAACTGTGCCACCGAATCCTGGTCTCTCACTGTGCCACCAACGAGCC
 TGTGGAGTCCATCAACGCCTTCCAGTGCCCCACCTGCCGGCATGTCATCACGCTCAGCCAGCGAGGTCTA
 GACGGGCTCAAGCGCAACGTCACCCTCCAAAACATCATTGACAGATTTACAGAAAGCATCTGTGAGCGGGC
 CCAACTCTCCAGTGAGACCCGACGGGAACGGGCTTTGACGCCAACACCATGTCCTCTGCCGAGAAGGT
 TCTCTGCCAGTTCTGTGACCAGGATCCTGCCAGGATGCTGTGAAGACTTGCGTTACTTGTGAAGTGTC
 TACTGTGATGAGTGCCTGAAAGCCACTCATCCGAACAAGAAGCCCTTTACAGGCCATCGTCTGATTGAGC
 CAATCCCGGACTCGACATCCGGGGCTGATGTGCTGGAGCACGAGGATGAGAAGGTGAATATGTACTG
 TGTGACCGATGACCAGTTAATCTGTGCCTTGTGTAAGTGGTTGGCGGCACCGCATCATCAGGTGGCA
 GCTTTGAGTGAGCGCTATGACAAATTGAAGCAAACTTGAGAGTAATCTACCAATCTTATTAAGAGAA
 ACACAGAACTGGAGACTCTTTGGCTAAACTCATCCAACTTGTCAACATGTTGAAGTCAATGCATCCCG
 TCAAGAAGCCAACTGACAGAAGAATGTGATCTTCTCATTGAAATCATTACAGCAACGAAGACAAATATT
 GGAACAAGATTAAGAAGGCAAGGTGATCAGGCTCCGCAAGTTAGTACAGCAGATTGCAAACTGTAAC
 AGTGCCTTGAGAGGTCTGCATCGCTCATCTCGAAGCGGAGCACTCGTGAAGGAAAATGACCACGCCCG
 TTTTCTACAGACAGCAAGAATATCACTGAGAGAGTCTCCATGGCAACTGCATCTCCAGGTCTAATT
 CCCGAAATCAACCTCAATGACACGTTTGACACTTTTGCCTTGGATTTTCCCGGGAGAAGAACTGCTAG
 AATGCTGGATTACCTAACAGCTCCCAACCTCCCGCGATTAGAGAAGAGCTCTGCACCGCTTCTACGA
 CACCATCACCGTCCACTGGACCTCAGAGGACGAGTTCAGCGTGGTCTCCTACGAGCTCCAGTACACCATA
 TTCACCGGACAAGCCAATGTTGTCAACGTGGCCTGTGACGGCACCTGTCTCCTCGGCTCCGACGGTCTGT
 GTAACCTGGCGGACAGCTGGATGATCGTGCCCAACATCAAGCAGAACCACTACACCGTGCACGGCCTGCA
 AAGTGGCACCAAGTATATCTTACGGTGAAGGCCATCAACCAGGCGGGCAGCCGTAGCAGCGAGCCCGGA
 AAGCTGAAGACCAACAGTCAGCCGTTTAGACTGGATCCCAAATCGGCTCATCGCAAGCTGAAGGTGTCCC
 ACGACAACCTGACTGTGAGCGCGACGAGTCGTCCTTAAGAAGAGTACGCGCCGGAGCGCTTCGCTGG
 TCAGGGGAGCTACGGAGTGGCTGGCAACGTGTTTCATCGACAGCGCCGTCCTACTGGGAAGTGGTCACC
 AGCGGAAGCACATGGTACGCCATCGGCCTGGCGTACAGATCGGCGCCGAAACACGAGTGGATCGGGAAGA
 ACGCGGGCTCCTGGGCCCTCTGCCGCTGCCACAACCACTGGGCGGTGCGACACGAGCGCAAGGAGACCCC
 CATCGCGCCGGCCCTCACCTCAGGCGCGTCCGGCTCCTGCTGGACTACGACAACGGCTCCATCGCCTTC
 TACGACGCTCTGAGCTCCGTCCACCTCCACACCTTCCACGCGGCGCTCGCGCAGCCCGTGTGCCCACT
 TCACCGTGTGGAACAAGTGTCTGACCATCGTCACGGGTCTGCCATCCCGGACCATCTGGACTGTACGGA
 GCAGCGACCT

ACGCGTACGCGGGCGCTCGAGCAGAACTCATCTCAGAAGAGGATCTGGCAGCAATGATATCCTGGATT
 ACAAGGATGACGACGATAAGGTTTAA

Protein Sequence: >MR220976 representing NM_183151
 Red=Cloning site Green=Tags(s)

METLESELTCPICLELFEDPLLLPCAHSLCFNCAHRILVSHCATNEPVESINAFQCPTCRHVITLSQRGL
 DGLKRNVTLQNIIDRFQKASVSGPNPSETRRERAFDANTMSSAEKVLQCFCDQDPAQDAVKTCVTCEVS
 YCDECLKATHPNKKPFTGHRLIEPIPDSHIRGLMCLHEHEDEKVNMYCVTDDQLICALCKLVGRHRDHQVA
 ALSERYDKLKQNLNLTNLIKRNTLETLLAKLIQTQCQHVENVASRQEAKLTEECDLLIEIIQRRQII
 GTKIKEGKVIRLRKLAQQIANCKQCLERSASLISQAEHSLKENDHARFLQTAKNITERVSMATASSQVLI
 PEINLNDTFDFALDFSREKKLLECLDYLTAPNPPAIREELCTASYDTITVHWTSEDEFVSVSYELQYTI
 FTGQANVNVACDGTCLLGSAGLCNSADSWMIVPNIKQNHYTVHGLQSGTKYIFTVKAINQAGRSSEPG
 KLKTN SQPFRDPKSAHRKLVSHDNL TVERDESSSKSHAPERFAGQGSYGVAGNVFIDSGRHYWEVVT
 SGTWYAIGLAYRSAPKHEWIGKNAASWALCRCHNHAVRHDGKETPIAPAPHLRRVGVLLDYDNGSIAF
 YDALSSVHLHTFHAALAQPVCPTFTVWNKCLTIVTGLPIPDLDCTEQRP

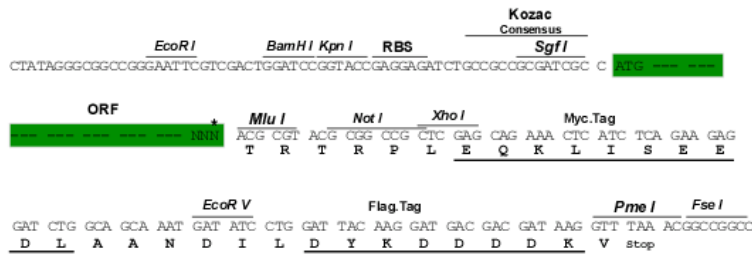
TRTRPLEQKLISEEDLAANDILDYKDDDDKV

Chromatograms: https://cdn.origene.com/chromatograms/ja1933_g05.zip

Restriction Sites: Sgfl-MluI

Cloning Scheme:

Cloning sites used for ORF Shuttling:



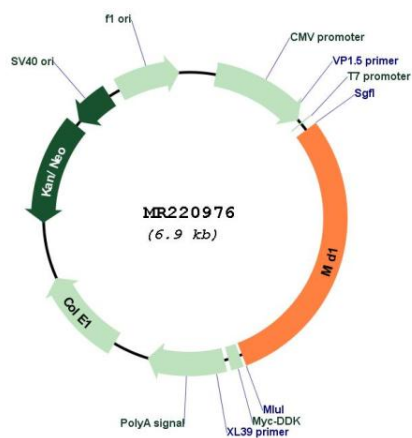
* The last codon before the Stop codon of the ORF

ACCN: NM_183151

ORF Size: 2040 bp

OTI Disclaimer:	<p>Due to the inherent nature of this plasmid, standard methods to replicate additional amounts of DNA in E. coli are highly likely to result in mutations and/or rearrangements. Therefore, OriGene does not guarantee the capability to replicate this plasmid DNA. Additional amounts of DNA can be purchased from OriGene with batch-specific, full-sequence verification at a reduced cost. Please contact our customer care team at custsupport@origene.com or by calling 301.340.3188 option 3 for pricing and delivery.</p> <p>The molecular sequence of this clone aligns with the gene accession number as a point of reference only. However, individual transcript sequences of the same gene can differ through naturally occurring variations (e.g. polymorphisms), each with its own valid existence. This clone is substantially in agreement with the reference, but a complete review of all prevailing variants is recommended prior to use. More info</p>
OTI Annotation:	This clone was engineered to express the complete ORF with an expression tag. Expression varies depending on the nature of the gene.
Components:	The ORF clone is ion-exchange column purified and shipped in a 2D barcoded Matrix tube containing 10ug of transfection-ready, dried plasmid DNA (reconstitute with 100 ul of water).
Reconstitution Method:	<ol style="list-style-type: none"> 1. Centrifuge at 5,000xg for 5min. 2. Carefully open the tube and add 100ul of sterile water to dissolve the DNA. 3. Close the tube and incubate for 10 minutes at room temperature. 4. Briefly vortex the tube and then do a quick spin (less than 5000xg) to concentrate the liquid at the bottom. 5. Store the suspended plasmid at -20°C. The DNA is stable for at least one year from date of shipping when stored at -20°C.
RefSeq:	NM_183151.1 , NP_898974.1
RefSeq Size:	3974 bp
RefSeq ORF:	2043 bp
Locus ID:	17318
Cytogenetics:	X 79.19 cM
MW:	76.6 kDa
Gene Summary:	Has E3 ubiquitin ligase activity towards IGBP1, promoting its monoubiquitination, which results in deprotection of the catalytic subunit of protein phosphatase PP2A, and its subsequent degradation by polyubiquitination.[UniProtKB/Swiss-Prot Function]

Product images:



Circular map for MR220976