

Product datasheet for **MR220963**

Kif13a (NM_010617) Mouse Tagged ORF Clone

Product data:

Product Type: Expression Plasmids
Product Name: Kif13a (NM_010617) Mouse Tagged ORF Clone
Tag: Myc-DDK
Symbol: Kif13a
Synonyms: 4930505I07Rik; mKIAA4109
Vector: pCMV6-Entry (PS100001)
E. coli Selection: Kanamycin (25 ug/mL)
Cell Selection: Neomycin
ORF Nucleotide Sequence: >MR220963 representing NM_010617
 Red=Cloning site Blue=ORF Green=Tags(s)

CTATAGGGCGCCGGGAATTCGTCGACTGGATCCGGTACCGAGGAGATCTGCCGCCGATCGCC**GGCGC**
GCCC

ATGTCGGATACGAAGGTAAAAGTTGCCGTCGGGTCGGCCCATGAACCGAAGAGAGCTGGAAGTGAACA
 CCAAGTGGTGGTGGAGATGGAAGGAACAGACGGTCTGCACCCTCCTCCTTCCAACACTAAGCAGGG
 AGAAAGAAAACCTCCCAAGGTGTTTGCCTTTGATTATTGCTTTTGGTCCATGGATGAATCGAACACAACA
 AAATATGCTGGTCAAGAAGTCGTTTTCAAGTGCCTCGGGGAAGGAATTCTCGAGAAAGCCTTTCAGGGAT
 ACAATGCTTGTATTTTTGCATATGGCCAGACAGGTTCTGGAAAGTCCTTTTCCATGATGGCCACCGAGA
 GCAGCTGGGCCTTATCCCAAGGCTCTGCTGTGCTCTGTTCAAAGGATCGCCCTGGAGCAAAATGAGTCA
 CAGACCTCAAAGTCGAGGTATCGTATATGGAGATCTATAACGAGAAGTCCGGGACCTCTTGGACCCCA
 AAGGGAGCAGGCAGTCTCTGAAAGTCCGAGAGCATAAAGTCTGGGGCCGTATGTCGATGGTCTGTCTCA
 GCTGGCTGTCACCAGCTTTGAGGACATTGAGTCACTGATGTCTGAGGGAAATAAGTCTCGAACGGTAGCA
 GCGACCAACATGAATGAGGAGAGCAGCCGTTCCCATGCGGTCTTCAACATCATCATCACACAGACGCTGT
 ATGACCTACAGTCTGGAACTCCGGGAGAAAGTCAAGGAGGAGTCAAGGAGGAGTCAAGGAGGAGGAGCA
 GAGAGTGTGCAAGACTGGAGCTGCGGGTGAAGGAGTCAAGGAGGAGTCAAGGAGGAGTCAAGGAGGAGCA
 ACCTTGGGATTGGTTATATCGTCACTGGCTGACCAGGCTGCTGGCAAAGGCAAAAACAAATTCGTGCCTT
 ATCGAGATTGGTCTTACTTGGCTTCTTAAGGACAATTTAGGAGGGAACAGCCAGACCTCTATGATAGC
 GACCATCAGCCCAGCAGCAGACAATAAGGAGACTGTCCACGCTAAGATATGCAGATCGAGCCAAG
 AGGATTGTGAACCAGCTGTGGTGAATGAGGACCCCAATGCCAAGGTATCCGAGAGCTTCGAGAGGAAG
 TGGAGAACTGAGGGAGCAGCTCTCGAGGCTGAGGCCATGAAGGCCCGAGCTAAAGGAGAAGCTCGA
 AGAGTCTGAGAAGCTGATAAAGGAGCTAACGGTGACGTGGGAAGAGAAGCTGAGGAAAACAGAAGCGATC
 GCACAGGAGAGACAGCGCAGCTGGAAAGCATGGGAATCTCCCTGGAGACCTCTGGCATCAAGGTGGGGG
 ACGACAAGTGCTACCTCGTCAACCTGAACGCAGACCCTGCCCTCAACGAGCTTCTGGTTTACTATTTAAA
 GGATCATACCCGGTGGGTGCAGATACCTCTCAGGACATCCAGCTCTTCGGAATAGGGATTACAGCCCGAG
 CACTGTGAGATCGACATCGCAGCGGATGGAGACATCACTCTACGCCAAAGAAAATGCAAGGTCCTGTG



[View online »](#)

TCAATGGCACCCCTGTCTGCAGTACTACCCAGCTGTGGCACGGCGACAGGATCTTATGGGGAAACAACCA
 CTTTTTGAAGATTAACCTGCCTAAGAGGAAACGGCGGGACTGGTTGAAAGACTTTGAGAGAGAAACCACT
 TCCGCGGAGCAGCATCTAGACGCTGCGAGCGAGGCTTCTCGGAGCCAGACTACAACACAGATTGCGAC
 AGATGGAGGTCATCATGAAAACACTGAACAGCAATGATCCAGTTCAAATGTGGTTACAGGTCCTGGAGAA
 GCAGTACCTGGAAGAGAAGCGGACCGCCCTGGAGGAACAGCGGCTCATGTACGAACGCGAGCTGGAGCAG
 CTTCCGACAGCAGCTCTCTCCGAGAGGCAGCCGCCAGCAGCGCCTCAGACCGTCTGGCCTACAGCAGCC
 AGACAGCCAGCAGAAGGTGACCCAGTGGGCCGAGGAGAGGGATGAACTCTTTAGCCAGAGCTTGGCCAA
 GCTTCGAGAGCAGCTGGTAAAAGCCAACACTTTGGTGAGGGAAGCCAACCTCCTAGCCGAGGAGATGAGC
 AAGCTCACTGACTACCAAGTGAATGACTCTGCAGATCCCTGCGGCCAACCTCAGTGCCAACAGGAAGAGAGGCG
 CAATCGTCAGCGAGCCGCCATCCAAGCCAGGAGGAAAGGGAAGGGCACCCAGGTCTGGACCATTGAGAA
 GCTGGAGAATAAGCTAATTGATATGAGAGACCTTTACCAAGAAATGGAAAGAAAATGTTCTGAGGCCAAG
 AGGCTCTATGGGAAGCGAGGTGACCCCTTTTATGAAGCGCAGGAGAATCACAACCTCATTGGTGTGGCTA
 ATGTGTTTTTGAATGTCTCTTCTGTGATGTGAAGCTTCAATATGCAGTACCCATCATCAGCCAGCAGGG
 GGAGGTTGCCGGCGCCTCCATGTGGAGGTGACGCGCATTACAGGAACCATCCAGAACGCATGGCGGAG
 GATGACTCTTCAGAGAATCTAGTGAGAGCGGGAGTCTTGAAGTGGTGCAGCAGCGGGCAAGTCAATC
 ACCGGGTCAAAAAGCTGACATGCAGGGTGATAATTAAGAGGCAACCGGGCTACCCATAAGCCTCTCAAA
 TTTCTGTTCTGTGAGTACAGTCTGGGACCAGTGTGAGTCTACAGTGGCTGCTCCAGTGGTGGACCCA
 GATGTGCCCTCCCGCAGTCCAAGGACGCACAGTACACGGTGACCTTCTCTCACTGTAAGGACTATGTGG
 TGAATGTACAGAAGAGTTTCTGGAGTTCATTTCTGATGGTGGCTGGGATTGAAGTGTGGGGCCACAG
 GTGTGCTGGGAACGGAAGCCCATCTGGGAGGTGGACTCGCTCCATGCGAAGACAAGGACATTGCATGAC
 AGGTGGAATGAAGTGACCCGGAAGATAGAGGTGTGGATCTCCATCTGGAGCTGAATGAGCTCGGGGATT
 ATGCCGCTGTGGAGCTTACCAGGCGAAAGACGTCAACACCGCGCGCTTCCAACCTCAGCAGGGTCA
 CTCCTAGAGTGCAGGTACAGTGAACCTGTACAGCACTCAGGGACACTGCCACTCATGTTGAAAGCC
 ATCCTATCAGTATCCATTGGCTGCGTGACCGCCAGGTCCACCAAGCTGCAGAGAGGGCTGGACAGTACC
 AGGAAGAAGACTTGAATTGTGTAAGAGAGAGATGGTCCGATGCACTATTAAACGACGGGAATACTTAGA
 CGAACAGATTAATAAAGTCAAGCAATAAATAAGAGAAAACAGAAGACGACATGGAGCGGGAAGCCAGGCTG
 GTGGAGCAGTGGGTGGGCTGACAGAGGAGAGGAATGCTGTGCTGGTGGCCGCCCTGGCAGCGGAATCC
 CCGGGGCACCTGCTGACTGGGTCCACCTCCTGGCATGGAACACACATCCCGGTTCTCTTCTGGATCT
 GAACGCGGATGACCTCAGTGCCAATGAGCAGCTGGTGGGCCCATGCGTCCGGTGTGAATCCATCCTG
 CCCAAGGAACACGGCAGTCAGTTTTTCTACCTGCCATCATAAAGCACAGTGTGACGAGGTTTCAGCCA
 CAGCCTCCTGGGACTCCTCTGTGCAGACTCTTTCACCTGAATCGGGTACACCCGAGAATGAAAGGAT
 CTACCTGATCGTGAAGACCACCTGCAGCTCAGCCACCCGGCCGATGGAGCTAGTGTTCGCGGAAGCGG
 ATCGCGGCAATATTTATAACAAGCAGAGTTTACCCAGAGTTTGAAGAGACGAATATCACTGATCAATA
 TATGTTACTCTGCGGCGTGACCTATGAGATAGTATCCAATATCCAAAGGCGACCCAGGAGATTGAGGA
 CCGGGAACCCCTGGCCCTCCTGGCAGCGCGGAGTGAGAACGAGGGCACTTTGGATGGGGAGACATACATC
 GAGAAGTACACGCGGGGCGTGTGCAGGTGGAGAATATCTGAGCCTGGAGCGGCTCCGGCAGGCTGTCA
 CGGTGAAGGAAGCGCTTCCACCAAGCGAGGCACATTCGAGAGAAGCCTCAGTACACCGAACGTTCAAA
 GCGTCTCTAGCCGGCCAGATCTCTGGCTTCGATGAAGACGATAAAGGCTGGCCGAGAACCAGTTA
 GACGTGTCTGACTACAGTCCAGCTACCAAGACGTCGCGTGTATGGGACTTTACCCAGGGACTCACCTC
 GCAGGAGCAAGGAAGTTGCCATCAGAGAATCCTCATGCTTAAACAGTACGCCCTTTTAAAGCGTTCTC
 TCTCAGCCACCAAGTCTTCAAACCCCTCATGCCTGTAAAAGAGGAGCATAAAGAAAAGTTGGCCCTG
 GAAGCCAGACCTCTCCTAAGCCAAGAGGACTCGGAAGAGGAGGAAAACGAGCTGGAAGCTCTCAGCAGGA
 AGCTGATGCTTACACAGCCTTATGTGCCGTGGAGTTCGCTGACTTCAAGTGTTCACATGCCAGCTTGG
 GAACAGGGAGTGGTCTCTTCTAAGGCGGACCTGACAGACTCGAGAGCCTGGAGAAAGCAGTGTCCCGT
 AGCCCTACCACAGCAGCCTCACCAGTGGCTACTTCTCCACAGTGCCTCCAATGCCACTCTGTCTGACA
 TGGCAGTCCCCTCAGCAGCAGCTCAGACCAGCTTCCGCTCTCGACAAAGGAGGTCGAGTCCGCGAGCC
 CCCGGGACCATCACTTGACCCGGATGTGACAGCAGCTTCAATCAGGAGCTTACAGAAGTAGGAAGAGGC
 TCAGGGAAGGATGAGACAATCGCTGTGCCGCTGGAGGAAAACAGTGCCTTACCAAGGGGACCCCGTCA
 CCCAGAGCATCCCTGAGGAAAGTTCAGAATGCCATGCAGGACTGCTTCAATGTTCAAGACTGGATGTCCG
 CCCAGCAAAGATGGCCACCAAGCCAGAGAATTCTGCCAGGAGAGGTGACGATAGAACACACTACAAA
 ATTTTGGAGGACCATCTTACAGAGTTTATGGGTGTTTCTGATGGCAAAGACTTTGATGGTTTGGCAG
 ATTGTTCTGTAGGGGAGCCCTCCAGGAGGAGGGCTCTAACAAACGAAACAGACATAAAGGTATCCAGAA

AAGACCTCCAGATGCCGACCGGCTGCATCCCAAGATAGAGAACGACCAGGAAGCCACAGCCACTCGG

ACGCGTACGCGGCCGCTCGAGCAGAACTCATCTCAGAAGAGGATCTGGCAGCAATGATATCCTGGATT
ACAAGGATGACGACGATAAGGTTTAA

Protein Sequence:

>MR220963 representing NM_010617
Red=Cloning site Green=Tags(s)

MSDTKVKVAVRVRPMNRRELELNTKCVVEMEGNQTVLHPPPSNTKQGERKPPKVFADYCFWSDMESNTT
KYAQEVVFKCLGEGILEKAFQGYNACIFAYGQTGSGKSFMMGHAEQLGLIPRLCCALFQRIALEQNES
QTFKVEVSYMEIYNEKVRDLLDPKGSRQSLKVRREHKVLPYVDGLSQLAVTSFEDIESLMSEGNKSRTVA
ATNMNEESSRSHAVFNIIITQTLYDLQSGNSGEKVSXVSLVDLAGSERVSKTGAAGERLKEGNSINKSLT
TLGLVISSLADQAAGKGNKFPYRDSVLTWLLKDNLGGNSQTSMIATISPAADNYEETLSTLRYADRRAK
RIVNHAVVNEPDNAKVIRELREEVEKLRQLSQAEAMKAPELKEKLEESEKLIKELTVTWEKLRKTEAI
AQERQRQLESMGISLETSGIKVGDGDKCYLVNLDNADPALNELLVYYLKDHTRVGADTSQDIQLFGIGIQPE
HCEIDIAADGDITLTPKENARSCVNGTLVCSTTQLWHGDRILWGNHFFRINLPKRKRRLWLDKFERETS
SAEHLDAASEASSEPDYNYEFAQMEVIMKTLNSNDPVQNVVQVLEKQYLEEKRTALEEQRLMYERELEQ
LRQQLSPERQPPSSASDRLAYSSQTAQKVTQWAEERDELFRQSLAKLREQLVKANTLVREANFLAEEMS
KLTDYQVTLQIPAAANLSANRKRGAIVSEPAIQARRKGGTQVWTIEKLENKLDIMRDLYQEWKENVPEAK
RLYGKRDPFYEAQENHNLIGVANVFLECLFCDVKLQYAVPIISQQGEVAGRLHVEVTRITGTIPERMAE
DDSENSESGSLEVVDSSGEVIHRVKLTCRVIKEATGLPISLSNFVFCQYTFWDQCESTVAAPVVD
DVPSPQSKDAQYTVTFSHCKDYVVTVEEFLEFISD GALAIEVWGHRCAGNGSPIWEVDSLHAKTRTLHD
RWNEVTRRIE V W I S I L E L N E L G D Y A A V E L H Q A K D V N T G G V F Q L R Q G H S R R V Q V T V K P V Q H S G T L P L M V E A
I L S V S I G C V T A R S T K L Q R G L D S Y Q E E D L N C V R E R W S D A L I K R R E Y L D E Q I K K V S N K K E K T E D D M E R E A R L
V E Q W V G L T E E R N A V L V P A P G S G I P G A P A D W V P P P M E T H I P V L F L D L N A D D L S A N E Q L V G P H A S G V N S I L
P K E H G S Q F F Y L P I I K H S D D E V S A T A S W D S S V H D S L H L N R V T P Q N E R I Y L I V K T T V Q L S H P A A M E L V L R K R
I A A N I Y N K Q S F T Q S L K R R I S L I N I C Y S C G V T Y E I V S N I P K A T E E I E D R E T L A L L A A R S E N E G T L D G E T Y I
E K Y T R G V L Q V E N I L S L E R L R Q A V T V K E A L S T K A R H I R R S L S T P N V H N V S S R P D L S G F D E D D K G W P E N Q L
D V S D Y S S Y Q D V A C Y G T L P R D S P R R S K E G C P S E N P H A L T V S P F K A F S P Q P P K F F K P L M P V K E E H K R L A L
E A R P L L S Q E D S E E E E N E L E A L S R K L M L T Q P Y V P V E F A D F S V Y N A S L E N R E W S S K A D L T D S R A L E K A V S R
S P T T S S L T S G Y F S H S A S N A T L S D M A V P S S D S S D Q L A V S T K E V E C A E P P G P S L A P D V R P A S N Q E L T E V G R G
S G K D E T I A V P L E E N S A L P K G T P S P Q S I P E E S S R M P C R T A S C S E L D V G P S K D G H Q A R E F C P G E V T I E H T T N
I L E D H S F T E F M G V S D G K D F D G L A D C S V G E P S R R R A L T N E T D H K G I P E R P P D A D R L H P K I E N D Q E A T A T R

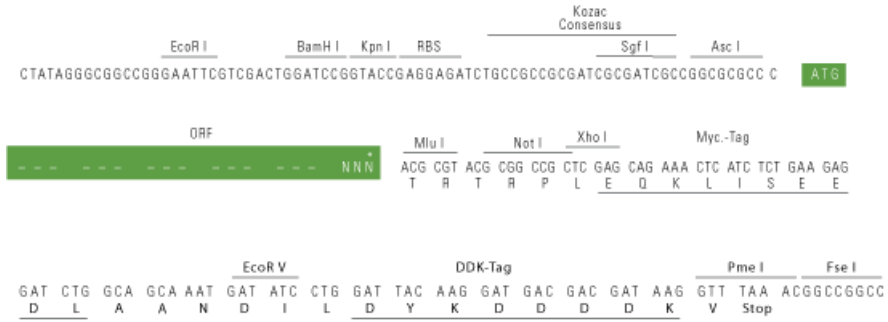
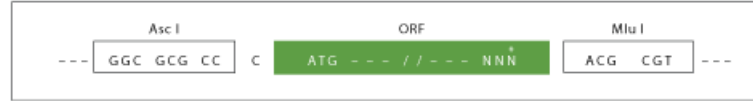
TRTRPLEQKLI SEEDLAANDILDYKDDDDKV

Restriction Sites:

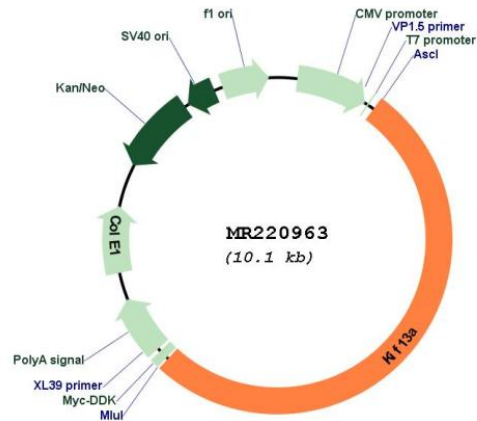
AscI-MluI

Cloning Scheme:

Cloning sites used for ORF Shuttling:



* The last codon before the Stop codon of the ORF

Plasmid Map:


ACCN: NM_010617

ORF Size: 5247 bp

OTI Disclaimer: The molecular sequence of this clone aligns with the gene accession number as a point of reference only. However, individual transcript sequences of the same gene can differ through naturally occurring variations (e.g. polymorphisms), each with its own valid existence. This clone is substantially in agreement with the reference, but a complete review of all prevailing variants is recommended prior to use. [More info](#)

OTI Annotation: This clone was engineered to express the complete ORF with an expression tag. Expression varies depending on the nature of the gene.

Components: The ORF clone is ion-exchange column purified and shipped in a 2D barcoded Matrix tube containing 10ug of transfection-ready, dried plasmid DNA (reconstitute with 100 ul of water).

Reconstitution Method:

1. Centrifuge at 5,000xg for 5min.
2. Carefully open the tube and add 100ul of sterile water to dissolve the DNA.
3. Close the tube and incubate for 10 minutes at room temperature.
4. Briefly vortex the tube and then do a quick spin (less than 5000xg) to concentrate the liquid at the bottom.
5. Store the suspended plasmid at -20°C. The DNA is stable for at least one year from date of shipping when stored at -20°C.

RefSeq: [NM_010617.2](#), [NP_034747.2](#)

RefSeq Size: 6866 bp

RefSeq ORF: 5250 bp

Locus ID: 16553

Cytogenetics: 13 A5

MW: 195.7 kDa