

Product datasheet for MR220957

Gjc1 (NM_001159383) Mouse Tagged ORF Clone

Product data:

Product Type:	Expression Plasmids
Product Name:	Gjc1 (NM_001159383) Mouse Tagged ORF Clone
Tag:	Myc-DDK
Symbol:	Gjc1
Synonyms:	C130009G16Rik; Cnx45; Cx45; Gja-7; Gja7
Mammalian Cell Selection:	Neomycin
Vector:	pCMV6-Entry (PS100001)
E. coli Selection:	Kanamycin (25 ug/mL)
ORF Nucleotide Sequence:	>MR220957 ORF sequence Red=Cloning site Blue=ORF Green=Tags(s)

TTTTGTAATACGACTCACTATAGGGCGGCCGGAATTCGTCGACTGGATCCGGTACCGAGGAGATCTGCC
GCC**CGGATCGCC**

ATGAGTTGGAGCTTCCTGACTCGCCTGCTAGAGGAGATCCACAACCATTGACATTTGTAGGGAAGATCT
GGCTCACTGTGCTGATTGTCTTTTCGAATTGCTCTAACTGCTGTAGGAGGAGAGTCCATCTACTATGATGA
ACAAAGCAAATTTGTGTGCAACACAGAGCAGCCGGGCTGTGAGAATGTCTGCTATGATGCCTTTGCCCG
CTCTCCCAGTGCCTTCTGGGTATTCCAGATCATCCTGGTTGCAACTCCCTCTGTGATGTACCTGGGAT
ATGCTATTCATAAGATTGCCAAAATGGAGCATGGCGAGGCAGACAAGAAGGCAGCTCGGAGCAAACCTA
TGCCATGCGTTGGAAACAGCACCCGGGCTCTGGAAGAAACGGAAGAGGACCATGAAGAGGATCCTATGATG
TATCCAGAGATGGAGTTAGAAAGCGAAAAAGAAAATAAAGAGCAGAGCCAACCAAAACCTAAGCATGATG
GCCGACGACGAATTCGAGAGGATGGGCTCATGAAAATCTATGTGTTGCAGCTGCTGGCCAGGACTGTGTT
TGAGGTGGGCTTTCTAATAGGGCAGTATTTCTGTATGGCTTCCAAGTCCACCCATTTTATGTGTGCAGC
AGACTTCCTTGCCCTCATAAGATAGACTGCTTTATTTCTAGACCCACTGAAAAGACCATCTTCTTCTGA
TAATGTATGGTGTACAGGCCTGCTTATTGCTTAACATTTGGGAGATGCTTCACTTAGGGTTGGGAC
AATTCGAGACTCACTAAACAGTAAAAGGAGGGAACCTTGATGATCCGGGTGCTTATAATTATCCTTTCACT
TGAACACACCCCTGCTCCCCCTGGCTATAACATTGCTGTCAAACCAGATCAGATCCAGTACACTGAGC
TGTCGAATGCTAAGATTGCCTACAAGCAAAAACAAGCCAATATTGCCAGGAACAGCAGTACGGCAGCCA
CGAGGAACACCTCCCGGCTGATCTGGAGACTCTGCAGCGGGAGATCAGAATGGCTCAGGAACGCTTGGAC
CTAGCAATCCAGGCCTACCATCACAAAACAACCCCATGGTCTCGGGAAAAGAAGGCCAAAGTGGGGT
CCAAATCTGGGTCCAACAAAAGCAGTATTAGTAGCAAAATCAGGGGATGGGAAGACCTCCGCTGGATT

ACGCGTACGCGGCCGCTCGAGCAGAAACTCATCTCAGAAGAGGATCTGGCAGCAATGATATCCTGGATT
ACAAGGATGACGACGATAAGGTTTAA



[View online »](#)

Protein Sequence: >MR220957 protein sequence
Red=Cloning site Green=Tags(s)

MSWSFLTRLLEEIHNHSTFVGKIWLTVLIVFRIVLTAVGGESIYYDEQSKFVCNTEQPGCENVCYDAFAP
 LSHVRFWVFQIILVATPSVMYLGAIHKIAKMEHGEADKKAARSKPYAMRWKQHRALEETEEDHEEDPMM
 YPEMELESEKENEQSQPKPKHDGRRRIREDGLMKIYVLQLLARTVFEVGFLLIGQYFLYGFQVHPFYVCS
 RLPCKPHIDCFISRPTKTIIFLLIMYGVTVGLCLLLNIWEMLHLGFGTIRDLSLNSKRRELDGPGAYNYPFT
 WNTPSAPPGYNIYVAVKPDQIQYTELSNAKIAYKQNKANIAQEQQYGSHEEHLPADLETLQREIRMAQERLD
 LAIQAYHHQNNPHGPREKKAKVGSKSGSNKSSISSKSGDGKTSVWI

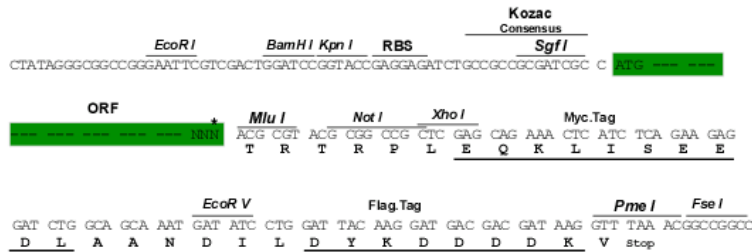
TRTRPLEQKLISEEDLAANDILDYKDDDDKV

Restriction Sites:

Sgfl-MluI

Cloning Scheme:

Cloning sites used for ORF Shuttling:



* The last codon before the Stop codon of the ORF

ACCN: NM_001159383

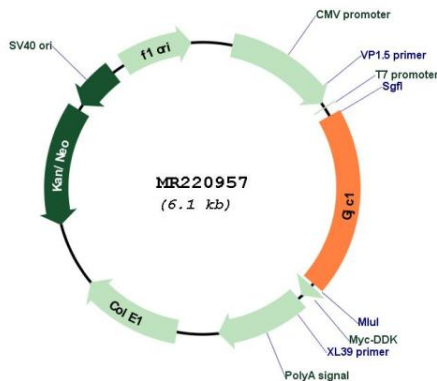
ORF Size: 1188 bp

OTI Disclaimer: Due to the inherent nature of this plasmid, standard methods to replicate additional amounts of DNA in E. coli are highly likely to result in mutations and/or rearrangements. Therefore, OriGene does not guarantee the capability to replicate this plasmid DNA. Additional amounts of DNA can be purchased from OriGene with batch-specific, full-sequence verification at a reduced cost. Please contact our customer care team at custsupport@origene.com or by calling 301.340.3188 option 3 for pricing and delivery.

The molecular sequence of this clone aligns with the gene accession number as a point of reference only. However, individual transcript sequences of the same gene can differ through naturally occurring variations (e.g. polymorphisms), each with its own valid existence. This clone is substantially in agreement with the reference, but a complete review of all prevailing variants is recommended prior to use. [More info](#)

OTI Annotation: This clone was engineered to express the complete ORF with an expression tag. Expression varies depending on the nature of the gene.

Components:	The ORF clone is ion-exchange column purified and shipped in a 2D barcoded Matrix tube containing 10ug of transfection-ready, dried plasmid DNA (reconstitute with 100 ul of water).
Reconstitution Method:	<ol style="list-style-type: none"> 1. Centrifuge at 5,000xg for 5min. 2. Carefully open the tube and add 100ul of sterile water to dissolve the DNA. 3. Close the tube and incubate for 10 minutes at room temperature. 4. Briefly vortex the tube and then do a quick spin (less than 5000xg) to concentrate the liquid at the bottom. 5. Store the suspended plasmid at -20°C. The DNA is stable for at least one year from date of shipping when stored at -20°C.
RefSeq:	<u>NM_001159383.1, NP_001152855.1</u>
RefSeq Size:	1977 bp
RefSeq ORF:	1191 bp
Locus ID:	14615
UniProt ID:	<u>P28229</u>
Cytogenetics:	11 E1
MW:	45.7 kDa
Gene Summary:	One gap junction consists of a cluster of closely packed pairs of transmembrane channels, the connexons, through which materials of low MW diffuse from one cell to a neighboring cell.[UniProtKB/Swiss-Prot Function]

Product images:


Circular map for MR220957