

## Product datasheet for **MR220949**

### Slitrk6 (NM\_175499) Mouse Tagged ORF Clone

#### Product data:

Product Type:	Expression Plasmids
Product Name:	Slitrk6 (NM_175499) Mouse Tagged ORF Clone
Tag:	Myc-DDK
Symbol:	Slitrk6
Synonyms:	4832410J21Rik; Sltk6
Mammalian Cell Selection:	Neomycin
Vector:	pCMV6-Entry (PS100001)
E. coli Selection:	Kanamycin (25 ug/mL)



[View online »](#)

**ORF Nucleotide Sequence:**

>MR220949 representing NM\_175499  
 Red=Cloning site Blue=ORF Green=Tags(s)

TTTTGTAATACGACTCACTATAGGGCGGCCGGGAATTCGTGCGACTGGATCCGGTACCGAGGAGATCTGCC  
 GCC**CGGATCGCC**

ATGAAGCTGTGGACTTATCTCCTTTATCCATCTCTTCTTGCTGTCTCTACAGTCCCAGTCACCAA  
 TGCCTCAGTCAGAGGCTCTTGCACACTCTTTGTAATTGTGAGGAGAAAGATGGCATAATGATAATAAA  
 CTGTGAAGAAAAAGGAATCAATAAATTATCCCAAATCAGTGTGCCACCATCACGACCTTTCCACTTAAGT  
 TTATTAATAAATGGCTTGACAATGCTTCACACGAACGACTTTTCTGGACTTACCAATGCCCTTTCAATAC  
 ACCTTGGATTTAACAATATAGCAGACATAGAGACTGGTGCATTTAATGGCCTTGGCTTCTTAAGCAACT  
 TCATATCAATCATAAATCTTTGGAAATCTTAAAGAGGATACCTCCATGGTTTGGAGAACCTGGAATTC  
 TTGCAGGCTGATAATAATTTTCATTACGATAATTGAACCAAGTGCCTTCAGCAAGCTCAACAGGCTAAAGG  
 TGTTGATTTTAAATGACAACGCTATTGAGAGTCTTCTCCAAACATATTCGATTTGTCCTTTAACCCA  
 TCTAGATCTTCGTGGGAACCAAGTTGCAAACATTGCCTTATGTTGGCTTTTAGAACACATTGGCCGGATA  
 TTGGATCTCCAATTGGAGGACAATAAGTGGGCCTGCAATTGTGAATTGTTGCAGCTAAAAAACTGGCTAG  
 AAAATATGCCTCCACAATCTATAATTGGTGATGTGATATGCTACAGCCCTCCACCTTTCAAAGGGAGTGT  
 ACTGAGTCGCCTGAAAAAGGAATCTTTTGGCCCTACTCCACCAGTATACGAAGAGCATGAGGATCCATCA  
 GGATCTTTGCTGGCCATAACATCTTCAACAAGTGACAGCCGCCTATCAAGCAAGAATACATCCATTTTGA  
 ACAAACCTACCAAAGCACCAGGTTTGATACCATACCTTACAAAGCCATCCACTCAGCTTCCAGTACCTTA  
 TTGTCCTATCCCTTGAATTGCAAAGTTCTCTCCCTTCGGGGCTTCTTATCCACTGTGAGGAGCGCAAT  
 ATAGAAAGCTTGTGAGATCTACAGCTCCTCCACACAACCCTAGAAAGCTGATTCTTGCAGGCAACATCA  
 TTCACACCTTAATGAAGTCTGACCTCACAGACTATTTCACTTTGGAAATGCTTCACTTGGGAACCAACCG  
 CATTGAAGTTCTGGAAGAAGGATCGTTTATGAATCTGACACGACTCCAGAAGCTTTATCTCAATGGCAAT  
 CATCTGACCAAACTCAATAAAGGCATGTTCTTGGTCTCCACAGTCTCGAGTATTTGTATCTTGAGTACA  
 ATGCGGTAAGGAAATATTACCAGGGACCTTCAACCCAATGCCTAAACTGAAAGTTCTTTATTTAAATAA  
 CAATCTCCTTCAAGTTTACCAGGCACATATCTTTTAGGTATTCTCTAACTAGAGTAAATCTTAAACA  
 AACCAATCACCCATTTACCTGTAAGCAACATCTTAGATGACCTTGACTTCTGATACAGATTGACCTTG  
 AGGATAACCCCTGGGACTGCTCTGTGACTTGGTTGGATTGCAGCAATGGATCCACAAGCTTGGCAAGGG  
 CACCATGACTGATGATATCCTCTGCACTCCCCAGGGCATCTTGACAAGAAAGAATAAAAGCCCTCAAC  
 AGTGATCTTCTTGGCCCTGGTTTAGTGAATAATCCTTCCATGCCAACCCAGACTACTTATGTTATTGTCA  
 CTTCTCCACAGTGGCGGCAGATACAGCTAGTACACTTTCAGTTCTCTCACTGATGCTGTGCCCTGTG  
 AGTTCTAATATTAGGACTCCTGATTGTGTTTCAACTATTGTATTCTGTGCCGCGGGGATCGTGGTTTTT  
 GTCCTCCACCGTAGGAGAAGATATAAGAAGAAAAAGTAGAGGAACAACCTGAGAGACAACAGTCTGTAC  
 ACTTGCAGTACAGCATGTATGGTCATAAAACAACCACCATACAACGAAAGACCCTTCTCTCTCTCTA  
 TGAACAACACATGGTGAGCCCAATGGTTCATGTCTACAGAAGTCCATCCTTTGGTCCAAAGCATTGGAA  
 GAAGTTGAGGAAAGAAATGATAAAGAAGGAAATGATGCAAAACATCTTCAAAGGAGCCTGTTAGAACGAG  
 AAAATCATTCACTCACAGGTTCAAATATGAAATACAAAACCTACAGACCAATCAACAGATTTTCATATC  
 CTTTCAGGATGCAAGCTTATTATATAGGAACATTTTGGAGAAAGAGAGGGAACCTCAGCAACTTGGCATC  
 ACAGAGTACCTAAGAAAAAATCTTGCTCAGCTCCAGCCAGAGGTGGAGGTTAACTATCCTGGAGCCACG  
 AGGAGCTAAAATTAATGAAACGTTGATGTACTACGACCAAGGAAGGTGTTGGTAGAACAGACTAAAAA  
 TGAATACTTTGAGCTCAAAGCTAACTTGCATGCTGAACCCGACTACTTAGAAGTCTTGGAGCAGCAACA

**ACGCGT**ACGCGGCCGCTCGAGCAGAAACTCATCTCAGAAGAGGATCTGGCAGCAATGATATCCTGGATT  
 ACAAGGATGACGACGATAAGGTTTAA

**Protein Sequence:** >MR220949 representing NM\_175499  
Red=Cloning site Green=Tags(s)

MKLWTYLLYPSLLACLQLSQSPMPSPVRGSCDTLCNCEEKDGIMIIINCEEKGINKLSQISVPPSRPFHLS  
LLNNGLTMLHTNDFSGLTNALSIIHLGFNNIADIETGAFNGLGLLKQLHINHNSLEILKEDTFHLENLEF  
LQADNFIITIIEPSAFSKLNRLKVLILNDNAIESLPPNIFRFVPLTHLDLRGNQLQTLPYVGFLEHIGRI  
LDLQLEDNKWACNCELLQLKNWLENMPPQSIIGDVICYSPPPFKGSVLSRLKKEFCPTPPVYEEHEDPS  
GSLLAITSSTSDSRLSSKNTSILKQPTKAPGLIPYLTKPSTQLPVPYCPICNCKVLSPSGLLIHCQERN  
IESLSDLQPPHNPRKLIILAGNIIHTLMKSDLTDYFTLEMLHLGNNRIEVL EEGSFMNLTRLQKLYLNGN  
HLTKLNKGMFLGLHSLEYLYLEYNVKEILPGTFNMPKLVLYLNNLLQVLP AHIFLGIPLTRVNLKT  
NQFTHLPVSNILDDLDFLIQIDLEDNPWCSCDLVGLQQWIHKLGKGTMTDDILCTSPGHLDKKEKALN  
SDLLCPGLVNNPSMPTQTTYVIVTSPTVAADTASTLFSSLTDAVPLSVLILGLLIVFITIVFCAAGIVVF  
VLHRRRRYKKKVVEQLRDNSPVHLQYSMYGHKTTHHTTERPSSSLYEQHMVSPMVHVYRSPSFGPKHLE  
EVEERNDKEGNDAKHLQRSLLERENHSPLTGSNMKYKTTDQSTDFISFQDASLLYRNILEKERELQQLGI  
TEYLRKNLAQLQPEVEVNYPGAHEELKLMETLMYSRPRKVLVEQTKNEYFELKANLHAEPDYLEVLEQQT

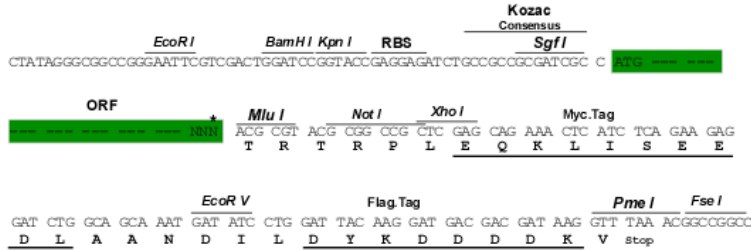
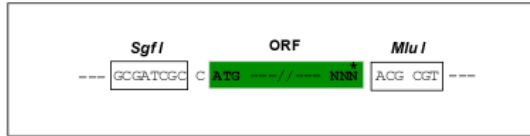
TRTRPLEQKLISEEDLAANDILDYKDDDDKV

**Chromatograms:** [https://cdn.origene.com/chromatograms/mm9012\\_g10.zip](https://cdn.origene.com/chromatograms/mm9012_g10.zip)

**Restriction Sites:** Sgfl-MluI

**Cloning Scheme:**

Cloning sites used for ORF Shuttling:



\* The last codon before the Stop codon of the ORF

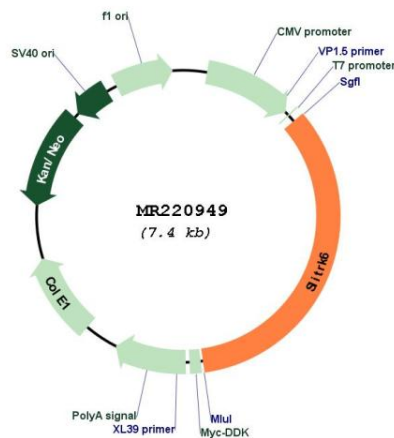
**ACCN:** NM\_175499

**ORF Size:** 2520 bp

**OTI Disclaimer:** Due to the inherent nature of this plasmid, standard methods to replicate additional amounts of DNA in E. coli are highly likely to result in mutations and/or rearrangements. Therefore, OriGene does not guarantee the capability to replicate this plasmid DNA. Additional amounts of DNA can be purchased from OriGene with batch-specific, full-sequence verification at a reduced cost. Please contact our customer care team at [custsupport@origene.com](mailto:custsupport@origene.com) or by calling 301.340.3188 option 3 for pricing and delivery.

The molecular sequence of this clone aligns with the gene accession number as a point of reference only. However, individual transcript sequences of the same gene can differ through naturally occurring variations (e.g. polymorphisms), each with its own valid existence. This clone is substantially in agreement with the reference, but a complete review of all prevailing variants is recommended prior to use. [More info](#)

<b>OTI Annotation:</b>	This clone was engineered to express the complete ORF with an expression tag. Expression varies depending on the nature of the gene.
<b>Components:</b>	The ORF clone is ion-exchange column purified and shipped in a 2D barcoded Matrix tube containing 10ug of transfection-ready, dried plasmid DNA (reconstitute with 100 ul of water).
<b>Reconstitution Method:</b>	<ol style="list-style-type: none"> <li>1. Centrifuge at 5,000xg for 5min.</li> <li>2. Carefully open the tube and add 100ul of sterile water to dissolve the DNA.</li> <li>3. Close the tube and incubate for 10 minutes at room temperature.</li> <li>4. Briefly vortex the tube and then do a quick spin (less than 5000xg) to concentrate the liquid at the bottom.</li> <li>5. Store the suspended plasmid at -20°C. The DNA is stable for at least one year from date of shipping when stored at -20°C.</li> </ol>
<b>RefSeq:</b>	<u>NM_175499.4, NP_780708.1</u>
<b>RefSeq Size:</b>	4243 bp
<b>RefSeq ORF:</b>	2523 bp
<b>Locus ID:</b>	239250
<b>UniProt ID:</b>	<u>Q8C110</u>
<b>Cytogenetics:</b>	14 E3
<b>MW:</b>	95.5 kDa
<b>Gene Summary:</b>	Regulator of neurite outgrowth required for normal hearing and vision.[UniProtKB/Swiss-Prot Function]

**Product images:**


Circular map for MR220949