

Product datasheet for **MR220948**

Pcdhgc5 (NM_033583) Mouse Tagged ORF Clone

Product data:

Product Type:	Expression Plasmids
Product Name:	Pcdhgc5 (NM_033583) Mouse Tagged ORF Clone
Tag:	Myc-DDK
Symbol:	Pcdhgc5
Mammalian Cell Selection:	Neomycin
Vector:	pCMV6-Entry (PS100001)
E. coli Selection:	Kanamycin (25 ug/mL)



[View online »](#)

ORF Nucleotide Sequence:

>MR220948 representing NM_033583
 Red=Cloning site Blue=ORF Green=Tags(s)

TTTTGTAATACGACTCACTATAGGGCGGCCGGGAATTCGTCGACTGGATCCGGTACCGAGGAGATCTGCC
 GCC**CGCATCGCC**

ATGAGGCCTATGGCATCACACAGTGCCTGGAAATGGCAAGTGTGTATGTTGTCCTGTGCTGCT
 GTGGCTGGGTGTCTGGGCAGCTTCGGTATTCAGTGGTGGAGGAGTCTGAGCCGGGACTTTGGTGGGGAA
 CGTTGCTCAAGATCTGGGCTTAAAGGGACAGATCTATTGAGCCGAGGCTGAGATTGGGCTCTGAGGAG
 AATGGGCGCTATTTTTCCCTGAGTTTGGTGGAGCGAGCTTTGGCAGTGGTACAGAAAATTGACCGAGAGA
 GCCTGTGCGGAGCCAGCACTAGCTGCCTGCTGCCTGTACAGGTGGTAACTGAACACCCACTGGAGCTCAC
 CCGGATAGAGGTAGAGATCCTGGACCTCAATGACAACCTCTCCAGCTTTGCCACTCTGATCGAGAGATG
 CGCATCTCGGAATCAGCTGCACCTGGAGCCAGGTTCCCACTGGATAGTGCCAAGACCCAGATGTGGCA
 CCAATACTGTGAGCTTTTATACTCTCAGCCCCAACAGCCACTTCTCTGATGTGAAGACCCTAAAAGA
 TGGAAAGCTCTTCCAGAGCTAGTGTAGAGCAACAGCTAGACCGTGGAGCCAGCAAGACATCAGCTA
 GTACTCACTGCCGTGGATGGGGGAACCCAGCCGCTCAGGGACCAAGCCTTATCTCGGTCAATGTGCTGG
 ACGTCAATGATAATGCCCAACCTTCCAGTCTCGGTTCTACGTGTGGGACTCCCAGAGAACACACCCCC
 GGGTACACTGCTGCTCCGTCTCAATGCCACTGATCCAGACGAGGGCACCAATGGCCAACCTAGACTACTCT
 TTTGGAGACCATACATCTGAAACAGTGAAGAATCTCTTTGGCCTGGATCCTAGCAGTGGAGCAATCCATG
 TGTTGGGTCCAGTAGATTTTGGAGAAATCAAATTTCTATGAAATTCATGCAAGAGCTCGAGACCAGGGACA
 GCCAGCCATGGAGGGCCACTGTGTAATTAAGTAGATGTAGGGGATGCTAACGACAACCCCTGAAGTG
 CTGCTGGCATCTTTGGTCAACCTGTGCTAGAGAGCACACCCGTAGGCACGGTTGTGGGGTTGTTAATG
 TGCGGGACCGAGACTCAGGTAGAATGGTGGAGTGGCCTGAAGACATCTCCAAACCTGCCATTTTCAGAT
 CAAGCCTTCTGAGAACCCTACTCACTGCTACCAGCCAGCCTCTGGACCGAGAGGCCACATCCCATTAT
 ACCATCGAGCTGCTGGCCAGTGTGCTGGATCACCCCCCTACATACCCATCTCACCCCTCAGGCTGAACA
 TTTCCAGACGTTAATGATAACGCACCCCATTTCCACCAACAGCTCTACACTGCTTATATCCAGAAAACCG
 CCCACCAGGCTCTCTCTGTACTGTGGCTGCCTCTGATCCAGACGAGGGGGATAATGCCCGCCTCACC
 TATTCTATTGTGGGGAGTCAAATCCAGGGAGCCCCAGCCTCCTCCTTTGTGTATGTCAACCCCGAGGATG
 GACGAATCTTTGCCAGCGGACCTTTGACTATGAGTACTGCAGATGCTGCAAACTCGTGGTGGGGTCCG
 TGATCCGGCTCTCCCCACTGCATGCTAACACATCTCTCCATGTGTTTGTCTCGATCAGAAATGATAAT
 GCCCAGCTGTGCTGCACCCAGCCTGGCAGGGAGTTCTCAGCCCTCAGCGTCTCCCCGATCTGCTC
 CTCTGTTCTTTGGTACCAAGGTGACAGCCGTGGATGCTGACGCTGGTCAAAATGCATGGCTCTCTTA
 CTCTCTTACCACAGTCCACAGCCCCGGACTGTTCTTGTATCTGCACACACTGGTGGAGTGGCACA
 GCCCGGGCCTTATTGGAGGATGACTCTGATACCCAACAGGTGGTGGTCTGGTGGAGGATAATGGTGACC
 CTTCACTATCCTCCACAGCAACAGTACTGCTGGTCTGGAGGACGAGGATGCAGAGGAAATGCCAAATC
 CAGTGACTTCTCACACACCCCTCTGAGCGGTGAGACCTCACCTTTACCTTATTGTGGCACTAGCAGCT
 GTCAGTCTTTATCCTTAGTTACCTTCACTTTCATGTGAGTAAAGTGTCTGCGGAGGCATGAAGATGGGG
 ACCGGGGTGGGGCCACTGCTGCAGGGGCCAGGACTCACCTCCAGGGAGTTCTATAAGCAGTCCAGCCC
 CAACCTCAGGTGAGCTCAGATGGCACACTAAAGTACATGGAGGTGACCCTGCGGCCACGGACTCTCAG
 AGCATTGCTACAGGACCTGCTTTCTCCGGCCTCGGATGGCAGTGAATCACTTTCTCAGGCCCTCA
 GCGTTCAGCAGCCCTCAGCCTTGGCGCTGGAACCCGAGGCCTTGCCTTCCGCTCTAGTACGCTGCGGGA
 GCGGAGCCAGCAAGCCCCGCCAACACTGACTGGCGTTTCTCTCAAGCCAGAGACCCGGCAGGCGGA
 TCCCAAAATGGTATGAAACTGGCACCTGGCCAAACAGTTTGTATACAGAGATGCTGCAAGCCATGA
 TCTTGGCCTCTGCCAGCGAAGCTGCTGATGGGAGCTCTACCCTGGGAGGGGGCGCTGGCACCATGGGTCT
 GAGCGCTCGATACGGACCCAGTTTACCCTGCAGCAGTGCCTGACTACCGCCAGAACGTGTACATCCCT
 GGCAGCAATGCCAGCTGACCAATGCCGCTGGCAAACAGATGGCAAGGCTCCAGCAGGTGTAATGGCA
 ACAAGAAGAAATCGGGCAAGAAAGAGAAGAAG

ACGCGTACGCGGCCGCTCGAGCAGAAACTCATCTCAGAAGAGGATCTGGCAGCAAATGATATCCTGGATT
 ACAAGGATGACGACGATAAGGTTTAA

Protein Sequence: >MR220948 representing NM_033583
 Red=Cloning site Green=Tags(s)

MRPMASPQVAGKWQVLCMLSLCCCGWVSGQLRYSVVEESEPGLVGNVAQDLGLKGTDLRRRLRLGSEE
 NGRYFSLSLVSGALAVSQKIDRESL CGASTSCLLPVQVTEHPLEL TRVEVEILDNDNSPSFATPDREM
 RI SESAAPGARFPLDSAQDPDVGTTNTVSFYTLSPNSHSLHVKTLKDGKLFPELVLEQQLDRETQARHQL
 VLTAVDGGTPARSGTSLISVIVLDVNDNAPTFFQSSVLRVGLPENTPPGTL LRLNATDPDEGTNGQLDYS
 FGDHTSETVKNLFGLDPSGAIHVLGPVDFEESNFYEIHARARDQGPAMEGHCVIQVDVDANDNPPEV
 LLASLVNVPVLESTPVGTVVGLFNVRDRDSGRNGEVSLKTPSNLPFQIKPSENHYSLLTSQPLDREATSHY
 TIELLASDAGSPPLHHTLTLRLNISDVNDNAPHFTQQLYTAYIPENRPPGSLCTVAASDPDEGDNARLT
 YSIVGSQIQGAPASSFVYVNPEDGRIFAQRTFDYELLQMLQIVVGVDRSGSPRLHANTSLHVFVLDQNDN
 APAVLHPRPGREFSAPQRLPRSAPPGSLVTKVTAVDADAGHNAWLSYLLPQSTAPGLFLVSAHTGEVRT
 ARALLEDDSDTQQVVVLVRDNGDPSLSSATVLLVLEDEDAEEMPKSSDFLTHPPERSDLTYLIVALAA
 VSLLSLVTFTFMSAKCLRRHEDGDRGGGHCCRGDQSPSREFYKQSSPNLQVSSDGLKYMEVTLRPDTSQ
 SHCYRTCFSPASDGSDFTLRPLSVQQPSALALEPEALRSRSSTLRERSQQAPPNTDWRFSQAQRPGTSG
 SQNGDETGTWPNQFDTEMLQAMILASASEAADGSSTLGGGAGTMGLSARYGPQFTLQHVDPYRQNVYIP
 GSNATLTNAAGKRDGKAPAGGNGNKKKSGKKEKK

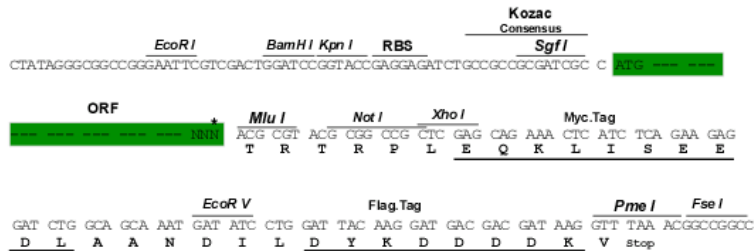
TRTRPLEQKLISEEDLAANDILDYKDDDDKV

Chromatograms: https://cdn.origene.com/chromatograms/mm9012_d02.zip

Restriction Sites: SgfI-MluI

Cloning Scheme:

Cloning sites used for ORF Shuttling:

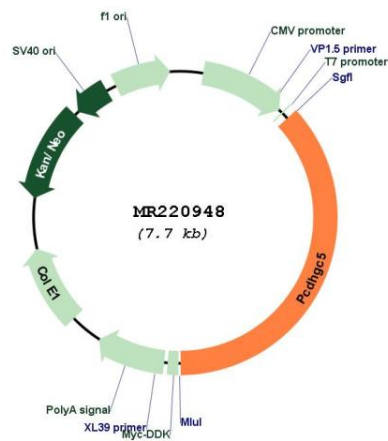


* The last codon before the Stop codon of the ORF

ACCN: NM_033583

ORF Size:	2832 bp
OTI Disclaimer:	The molecular sequence of this clone aligns with the gene accession number as a point of reference only. However, individual transcript sequences of the same gene can differ through naturally occurring variations (e.g. polymorphisms), each with its own valid existence. This clone is substantially in agreement with the reference, but a complete review of all prevailing variants is recommended prior to use. More info
OTI Annotation:	This clone was engineered to express the complete ORF with an expression tag. Expression varies depending on the nature of the gene.
Components:	The ORF clone is ion-exchange column purified and shipped in a 2D barcoded Matrix tube containing 10ug of transfection-ready, dried plasmid DNA (reconstitute with 100 ul of water).
Reconstitution Method:	<ol style="list-style-type: none"> 1. Centrifuge at 5,000xg for 5min. 2. Carefully open the tube and add 100ul of sterile water to dissolve the DNA. 3. Close the tube and incubate for 10 minutes at room temperature. 4. Briefly vortex the tube and then do a quick spin (less than 5000xg) to concentrate the liquid at the bottom. 5. Store the suspended plasmid at -20°C. The DNA is stable for at least one year from date of shipping when stored at -20°C.
RefSeq:	NM_033583.3 , NP_291061.1
RefSeq Size:	4708 bp
RefSeq ORF:	2835 bp
Locus ID:	93708
Cytogenetics:	18 B3
MW:	102.3 kDa

Product images:



Circular map for MR220948