

## Product datasheet for **MR220916**

### **Il12rb1 (NM\_008353) Mouse Tagged ORF Clone**

#### **Product data:**

Product Type:	Expression Plasmids
Product Name:	Il12rb1 (NM_008353) Mouse Tagged ORF Clone
Tag:	Myc-DDK
Symbol:	Il12rb1
Synonyms:	CD212; IL-12R[b]
Mammalian Cell Selection:	Neomycin
Vector:	pCMV6-Entry (PS100001)
E. coli Selection:	Kanamycin (25 ug/mL)



[View online »](#)

**ORF Nucleotide  
Sequence:**

>MR220916 representing NM\_008353  
 Red=Cloning site Blue=ORF Green=Tags(s)

TTTTGTAATACGACTCACTATAGGGCGGCCGGAATTCGTCGACTGGATCCGGTACCGAGGAGATCTGCC  
 GCC**CGGATCGCC**

ATGGACATGATGGGGCTGGCAGGGACCAGCAAACACATCACCTTCTCTCTGCTTTGCCAGCTAGGCGCCT  
 CAGGCCCAGGTGATGGCTGCTGCGTTGAGAAGACATCGTTCCAGAGGGAGCCTCAGGCTCACCTTAGG  
 ACCCAGGAACTTGAGTTGCTACAGGGTTTCCAAGACAGACTATGAGTGCTCCTGGCAGTATGATGGCCCT  
 GAGGACAAATGTTTCTCACGTCTGTGGTCTGCTTTGTCCCTCCGAACCATACCCACACCGGCCAGGAGC  
 GCTGCCGCTACTTCTCTCAGGCCCAGACCGCACTGTGCAGTTCTGGAAACAGGACGGTATCCCTGTGCT  
 GTCCAAGTCAACTTCTGGGTGGAGTCTCGGCTTGGAAACCGAACCATGAAGTCCAGAAGATATCCAG  
 TACCTGTACAACGGACCAAGACGACCCCTCCCTGGGACACATCAAGGTGTACAATCACACCGGCAGT  
 TCGAATGGACTGGAATGTGTCTGAAGAGGCCGGTCTGAGGTACAGTTCAGGCGCCGTATGCCACAAC  
 GAATTGGACCTTGGGTGACTGCGGACCTCAGGTTAACTCTGGCTCAGGTGTGCTTGGTGACATTCGTGGG  
 AGCATGTCTGAGTCTGCTCTGCCCTTCTGAGAACATGGCCCAAGAGATCCAGATACCGAGGAGGAGGC  
 GGCTCTCCTCAGGAGCCCTGGAGTCCCTGGAGTGATTGGAGCATGCCTGTGTGTGTTCCACCTGAAGT  
 CCTTCCCAGGCCAAGATTAAGTTCTTGGTGGAGCCCCTGAACCAAGGTGGAAGGAGGCGCTAACCATG  
 CAAGGACAGTCACCACAGCTGGCAGTCCCGAAGGCTGCCGAGGCAGGCTGGTGCAGGTGAAGAAGC  
 ACTTGGTCTGGTGCATGCTGTCTGCGAGGTGCCAGGCTCAGACCTCGAAGACCGTGCCTTGGGCAA  
 GAAGCTGAACCTTCCGGGGCCACCTATGACCTGAATGTCTCGCAAACTCGTTTCGGTGCAGCACC  
 ATCCAGAAGTGGACCTTCTGCCAAGAGCTCACAGAGACAAGAGCCCTGAATGTCAGCGTGGGAGGCA  
 ACATGACATCCATGCAGTGGGAGCCAGGCTCCCGGACCCACTACTGCCTTGGTGGCAGCCATGGTT  
 CCAGCACAGGAACACACACACTGTACCCTGATTGTACCAGAAGAAGAGGATCCTGCCAAGATGGTGACA  
 CACAGCTGGAGCTCTAAACCTACCTGGAGCAGGAGGAATGTTACCGCATCACAGTGTTCGCTCCAAGA  
 ACCCAAGAATCCCATGCTGTGGCCACAGTCTGTCCAGTTACTACTTTGGGGTAACGCCTCGAGAGC  
 CGGTACTCCAGCACAGTGTGGTGGAGAACCAACCGGGGACTCGGTGTCCGTGGAGTGGACGGCGTCA  
 CAGCTGAGCACCTGCCGGGGTCTGACGCAATACGTCGTGCGCTGCGAGGCTGAAGACGGCGCTGGG  
 AGTCAGAGTGGCTCGTCCACCCACTAAAACCAAGTGAACCTTACGGACTGCGCAGCCGAGTAATGTA  
 CAAGTTTCAAGTGCAGCCGACACTGCGAGGCTCCCGGTGCCTGGAGTCATCCCAGCGCTTTAGCTTT  
 GAGGTGCAGATTTCCCGTTTATCCATCATTTTCGCGTCTCTGGGAAGCTTCGCCAGCGCTCCTCCTGTGG  
 GCAGTCTCGGATACATTGGCTTAAACAGGGCCGCTGGCACTTGTGCCACCCCTGCCTACACCCTGTGG  
 CAGCACTGCCGTGGAGTTCCTGGCAGCCAGGGCAAGCAGGCTTGGCAGTGGTGAAACCTGAGGACTTC  
 CCGGAGGTGTTGTACCCGCGAGATGCGCTGGTGGTTCGAGATGCCCGGAGACAGAGGCGACGGGACAGAGT  
 CGCCCCAGGCCGCCCTGAGTGCCTTGGACACAAGGCGGCCCTTGGAGACTCAGAGGCAGAGGCAAGT  
 GCAGGCACTGTGAGAGCCAGGCGCTGGGCTGGCTAGGGAGGACTGTCCCGTGGTGACCTGGCCAC  
 GTGACACTCCCGCTGCTCCTGGGAGGTGTACCCAGGGAGCCTCTGTACTTGACGATCTTTGGAGGACCC  
 ATAAGACTGCGGAGCCGGGACCGCCACTTTGGGGCAAGAGGCC

**ACGCGT**ACGCGGCCGCTCGAGCAGAACTCATCTCAGAAGAGGATCTGGCAGCAAATGATATCCTGGATT  
 ACAAGGATGACGACGATAAGGTTTAA

**Protein Sequence:** >MR220916 representing NM\_008353  
Red=Cloning site Green=Tags(s)

```
MDMMGLAGTSKHITFLLLCQLGASGPGDGCCVEKTSFPEGASGSPLGPRNLSCYRVSKTDYECWQYDGP
EDNVSHVLWCCFVPPNHHTGQERCYFSSGPDRTVQFWEQDGIPLVSKVNFVWESRLGNRTMKSQKISQ
YLYNWTKTPPLGHKIVSQSHRQLRMDWNVSEEAGAEOVQFRRRMPTTNWTLGDCGPQVNSGSGVLDIRG
SMSECLCPSENMAQEIQIRRRRLSSGAPGGPWSDWMPVCPPEVLPQAKIKFLVEPLNQGRRRLTM
QGQSPQLAVPEGCRGPGAQVKKHLVLRMLSCRCAQTSKTVPLGKLNLSGATYDLNVLAKTRFRST
IQKWHLPAQELTETRALNVSVGGNMTSMQWAAQAPGTTYCLEWQPWFQHRNHTHCTLIIVPEEDPAKMVT
HSWSSKPTLEQEECYRITVFASKNPNPMLWATVLSYYFGGNASRAGTPRHVSVRNQTGDSVSVVEWTAS
QLSTCPGVLTYVVRCEAEDGAWSEWLVPPTKTQVTL DGLRSRVMYKVQVRADTARLPGAWSHPQRF SF
EVQISRLSIIIFASLGSFASVLLVGLGYIGLNRAAWHLCPPLPTPCGSTAVEFPGSQGKAWQWCNPEDF
PEVLYPRDALVVEMPGDRGDGTESPQAAPECALDTRRPLETQRQRQVQALSEARRLGLAREDCPRGDLAH
VTLPLLLGGVTQGASVLDLWRTHKTAEPGPPTLGQEA
```

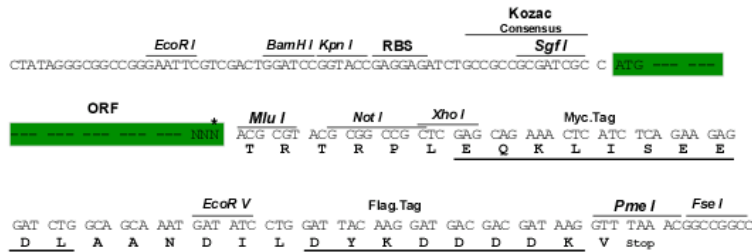
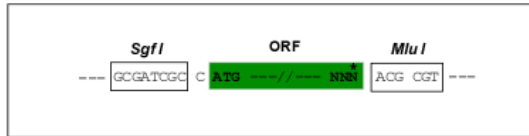
TRTRPLEQKLISEEDLAANDILDYKDDDDKV

**Chromatograms:** [https://cdn.origene.com/chromatograms/mm9013\\_e01.zip](https://cdn.origene.com/chromatograms/mm9013_e01.zip)

**Restriction Sites:** SgfI-MluI

**Cloning Scheme:**

Cloning sites used for ORF Shuttling:



**ACCN:** NM\_008353

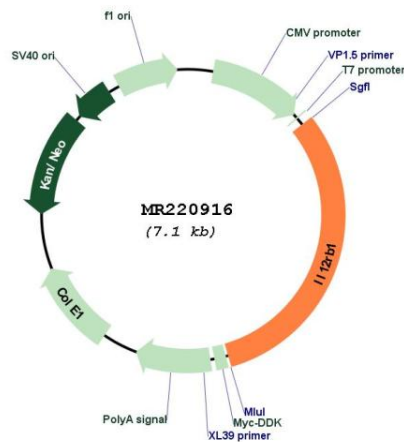
**ORF Size:** 2214 bp

**OTI Disclaimer:** The molecular sequence of this clone aligns with the gene accession number as a point of reference only. However, individual transcript sequences of the same gene can differ through naturally occurring variations (e.g. polymorphisms), each with its own valid existence. This clone is substantially in agreement with the reference, but a complete review of all prevailing variants is recommended prior to use. [More info](#)

**OTI Annotation:** This clone was engineered to express the complete ORF with an expression tag. Expression varies depending on the nature of the gene.

<b>Components:</b>	The ORF clone is ion-exchange column purified and shipped in a 2D barcoded Matrix tube containing 10ug of transfection-ready, dried plasmid DNA (reconstitute with 100 ul of water).
<b>Reconstitution Method:</b>	<ol style="list-style-type: none"> <li>1. Centrifuge at 5,000xg for 5min.</li> <li>2. Carefully open the tube and add 100ul of sterile water to dissolve the DNA.</li> <li>3. Close the tube and incubate for 10 minutes at room temperature.</li> <li>4. Briefly vortex the tube and then do a quick spin (less than 5000xg) to concentrate the liquid at the bottom.</li> <li>5. Store the suspended plasmid at -20°C. The DNA is stable for at least one year from date of shipping when stored at -20°C.</li> </ol>
<b>RefSeq:</b>	<u><a href="#">NM_008353.2</a></u> , <u><a href="#">NP_032379.2</a></u>
<b>RefSeq Size:</b>	2873 bp
<b>RefSeq ORF:</b>	2217 bp
<b>Locus ID:</b>	16161
<b>UniProt ID:</b>	<u><a href="#">Q60837</a></u>
<b>Cytogenetics:</b>	8 34.21 cM
<b>MW:</b>	82.2 kDa
<b>Gene Summary:</b>	Functions as an interleukin receptor which binds interleukin-12 with low affinity and is involved in IL12 transduction. Associated with IL12RB2 it forms a functional, high affinity receptor for IL12. Associates also with IL23R to form the interleukin-23 receptor which functions in IL23 signal transduction probably through activation of the Jak-Stat signaling cascade.[UniProtKB/Swiss-Prot Function]

### Product images:



Circular map for MR220916