

Product datasheet for **MR220873**

5330417C22Rik (NM_001033304) Mouse Tagged ORF Clone

Product data:

Product Type:	Expression Plasmids
Product Name:	5330417C22Rik (NM_001033304) Mouse Tagged ORF Clone
Tag:	Myc-DDK
Symbol:	5330417C22Rik
Synonyms:	BB183350
Mammalian Cell Selection:	Neomycin
Vector:	pCMV6-Entry (PS100001)
E. coli Selection:	Kanamycin (25 ug/mL)



[View online »](#)

ORF Nucleotide
Sequence:

>MR220873 representing NM_001033304
Red=Cloning site Blue=ORF Green=Tags(s)

TTTTGTAATACGACTCACTATAGGGCGGCCGGGAATTCGTCGACTGGATCCGGTACCGAGGAGATCTGCC
GCC**CGCATCGCC**

ATGAAGGACCAGTCTGCAAGCCCTGCGGGAGGGCCGCTACTCCCTCGGCACTGGCATCCGATTTGATG
AGTGGGATGAGCTACCTCACGGCTTTGCCAGCCTCTCGGCCAACTTGGAGGTCGATGACAGCATCTCGGA
GTCCACTGAGAAGTGCACCTTCGTCCTCAAGTGGGTTCCCGGGGAGACTACATCGCCTCCAACACAGATGAA
TGCACCGCCACACTGATGTATGCCGTCAACCTAAAGCAGTCTGGCACCGTTAACTTTGAGTACTACTACC
CGGACTCCAGCATCATCTTTGAATTTTTGTCCAGAATGACCAGTCCAGCCAGTGCTGATGACTCCAG
GTGGATGAAGACTACGGAGAAAGGATGGGAATCCACAGTGTGAGCTAAATAGAGGCAATAACGTCCTC
TATTGGAGAACCACAGCTTTCTCGGTGTGGTCCAAAGTGTCCAAGCCCGTCTTGTAGAAACATCGCCA
TAACAGGGGTGGCTTACACCTCCGAGTGTTCCTGCAAGCCTGGCACATACGCTGCCAAGCAGGGCTC
CCCTTTCTGCAAGCTTTGTCCAGCCAATACTACTCAAACAAGGAGAAACGTCCTGCCATCCGTGTGAT
GCTGACAAATACTCAGAAAAAGGATCTCCACCTGCAAAGTGCGCCAGCCTGCACAGACAAGGACTATT
TCTACACCACACAGCCTGTGATGCTCAGGGAGAGACACAGCTCATGTACAAATGGGCCATACAAAAAT
CTGCGGTGAGGACCTGGAGGGGGCGGTGAAGCTGCCCGCCTCTGGTGTGAAGACCCGCTGCCACCCCTGT
AACCCGGGCTTCTTCAAACCGACAACAGCACCTGTGAACCTTGCCCATACGGCTCGTACTCCAACGGCT
CGGATTGTACCCACTGCCAGCAGGAAGTGAAGCTGCCGTGGGATTTGAGTACAAATGGTGGACACACT
GCCCTCCAACATGGAACTACGGTCTCAGTGGGATCACTTTGAATACAAGGGCCTGACAGGCTGGGAG
GTGGCTGGTGACCACATTTATACAGTGTGGTGCCTCAGACAACGACTTCATGATCTCACTCTGGTTG
TACCAGGATTTAGACCTCCACAGTCAAGTGGTGGCAGACACAGAGAACAAGAGGTGGCCAGGATCACATT
TGTCTTCGAGACCATCTGCTCTGTGAAGTGTGAGCTCTACTTCATGGTGGGCATGAATTCAGGACCAAT
ACTCCTGTGGAGACGTGAAGGGCACAAAGGCAAGCAGTCTATACCTACACCATCGAAGAGAATGCTA
CTGTGAGCTTACATGGGCCTTCCAGAGGACCACCCTTCAAGAACAGGCAGGAAGTATACTAATGATGT
CGCCAAGATCTACTCAATCAATGTACCAACGTATGGGGGGCGTGGCCTCTACTGCCGTCCCTGTGCC
CTAGAAGCCTCTGATTTGGGCTCCTCCTGCACCTTTGTCTGCTGGCCATTACATCAACCCGGATTCTG
GGACCTGCCACCTCTGTCCCTTAACACCATCCTGAAAGCTCACCAGCCTTACGGTGCACAGGCCTGTGT
GCCCTGTGGTCCAGGGACCAAGAATAACAAGATCCACTCTCTGCTACAACGACTGCACCTTCTCCCGA
AACACCCCGCAGCAGGATTTTCACTACAACCTTCTCAGCTCTGGCAGGCACCGTCTCTCTGGCAGGGTGC
CGAGCTTACCTCGAAGGGGCTGAAGTATTTTCATCATTTACCCCTGAGTCTCTGTGAAACCAGGGGAA
AAAAATGGCTGTGTGCACAGACAATGCTACTGACCTCCGGATCCCTGATGGTGGAGCCGGCTTCTCTAAG
TCCGTCACAGCCTATGTCTGCCAGGTTGTATCATATCCCTCTGAGGTGATGGGCTACAAGGCCGGGGTGT
CCTCACAGCCCGTCAAGCTTGTGACCGACTTGTGGAGTGTCAACAGACATGACCTTGAAGGAATCGT
CTCCCCAGTTGAACCTTTTACCAGAGACCTCGGAATTCGGGACATAGTCTTCTTTTTTAGATCCAAT
GATGTGACCCAGTCCCTGCAGTCTGGAAGATCAACCACCATCCGCTCAGATGCAATCCAATGAAAGCTG
CTCCTGGCACCTGCGGCTACCCAGCATGTGCTCTGATGGGACCTGTGATGGCTGTAACCTCCACTTCT
GTGGGAGAGTGTGGCCGCTTGTCCACTCTGCTCGGCCTGACTACCACACTTTTGTCAAGCAGCTGTGTG
GCTGGGATCCAGAAGACTACTTACATGTGGCGAGAACCAAGCTGTGCTCTGGGGGCATTTCCCTGCCTG
AGCAGAGAGTTACCATCTGCAAAACGATCGATTTCTGGTAAAAGTGGGCATCTCGGCTGGCACCTGCAC
TGCCATCTGCTTACTGTCTGACCTGCTACTTTTGAAGAAGAATCAAAAATTAGAATACAAATACTCC
AAGTTGGTAATGAACGCTACTCTTAAAGACTGCGACCTGCCGGCAGCAGACAGCTGTGCCATCATGGAAG
GAGAGGACGTGGAGGATGACTTCATCTTACCAGCAAGAAGTCCCTTTTGGGAAGATCAATCCTTTAC
CTCCAAGAGGACTCTGATGGATTTGACTCGGTGCCGTGAAGACGTCTCAGGAGGCCAGACATGGAC
ATG

ACGCGTACGCGGCCGCTCGAGCAGAACTCATCTCAGAAGAGGATCTGGCAGCAAATGATATCCTGGATT
ACAAGGATGACGACGAT AAGGTTTAA

Protein Sequence: >MR220873 representing NM_001033304
 Red=Cloning site Green=Tags(s)

```
MKDQSCKPCAEGRYSLGTGIRFDEWDELPHGFASLSANLEVDDSI SESTENCTSSKWVPRGDYIASNTDE
CTATLMYAVNLKQSGTVNFEYYPDSSIIFFVQNDQCQPSADDSRWMKTTEKWEFHVELNRGNVNL
YWRRTAFSVWSKYSKPVLRNIAITGVAYTSECFPCPGTYAAKQGSFPCKLCPANYYSNKGETSCHPCD
ADKYSEKGSSTCKVRPACTDKDYFYHTACDAQGETQLMYKWAIPKICGEDLEGAVKLPASGVKTRCPPC
NPGFFKTDNSTCEPCPYGSYNSGSDCTHCPAGTEPAVGFEYKWWNTLPSNMETT VLSGINFEYKGLTGWE
VAGDHIYAVGASDNDFMILTLVVPGFRPPQSVVADTENKEVARITVFVETICSVNCELYFMVGMNSRTN
TPVETWKGTKGKQSYTYIEENATVSFTWAFQRTTLHETGRKYTNDVAKIYSINVTNVMGGVASYCRPCA
LEASDLGSSCTSCPAGHYINRDSGTCHLCPSENTILKAHQPYGAQACVPCPGTKNNKIHSLCYNDCTFSR
NTPSRIFNYNFSALAGTVSLAGVPSFTSKGLKYFHFTLSL CGNQGKMAVCTDNVTDLRIPDGEAGFSK
SVTAYVCQVVIIPSEVMGYKAGVSSQPVSLADRLVGVSTDMTLEGIVSPVELFHPETSGIPDIVFFRSN
DVTQSCSSGRSTTIRLRCNPMKAAPGTLRLPSMCS DGTCDGCNFHFLWESVAACPLCSASDYHTFVSSCV
AGIQKTTYMWREPKLCSGGISLPEQRVTICKTIDFWLKVGISAGTCTAILLTVLTCYFWKKNQKLEYKYS
KLYMNATLKDCDLPAADSCAIMEGEDVEDDFIFTSKKSLFGKIKSFTSKRTPDGFDSVPLKTSSGGPDMD
M
```

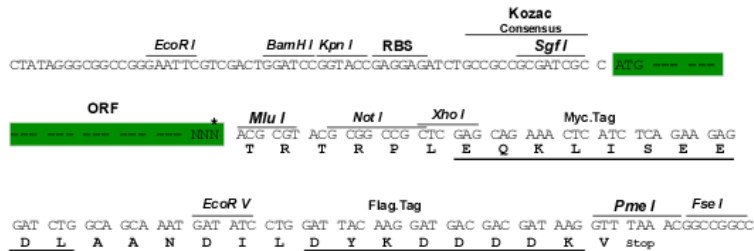
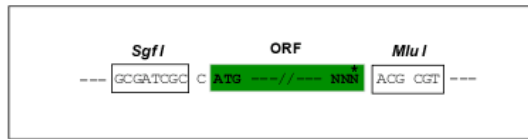
TRTRPLEQKLISEEDLAANDILDYKDDDDKV

Chromatograms: https://cdn.origene.com/chromatograms/mm9003_b09.zip

Restriction Sites: SgfI-MluI

Cloning Scheme:

Cloning sites used for ORF Shuttling:



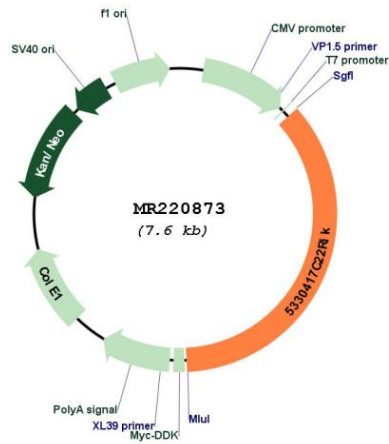
* The last codon before the Stop codon of the ORF

ACCN: NM_001033304

ORF Size: 2733 bp

OTI Disclaimer:	The molecular sequence of this clone aligns with the gene accession number as a point of reference only. However, individual transcript sequences of the same gene can differ through naturally occurring variations (e.g. polymorphisms), each with its own valid existence. This clone is substantially in agreement with the reference, but a complete review of all prevailing variants is recommended prior to use. More info
OTI Annotation:	This clone was engineered to express the complete ORF with an expression tag. Expression varies depending on the nature of the gene.
Components:	The ORF clone is ion-exchange column purified and shipped in a 2D barcoded Matrix tube containing 10ug of transfection-ready, dried plasmid DNA (reconstitute with 100 ul of water).
Reconstitution Method:	<ol style="list-style-type: none">1. Centrifuge at 5,000xg for 5min.2. Carefully open the tube and add 100ul of sterile water to dissolve the DNA.3. Close the tube and incubate for 10 minutes at room temperature.4. Briefly vortex the tube and then do a quick spin (less than 5000xg) to concentrate the liquid at the bottom.5. Store the suspended plasmid at -20°C. The DNA is stable for at least one year from date of shipping when stored at -20°C.
RefSeq:	NM_001033304.2
RefSeq Size:	3326 bp
RefSeq ORF:	2736 bp
Locus ID:	229722
UniProt ID:	A2AFS3
Cytogenetics:	3 F3
MW:	100.5 kDa
Gene Summary:	May protect cells from cell death by inducing cytosolic vacuolization and upregulating the autophagy pathway.[UniProtKB/Swiss-Prot Function]

Product images:



Circular map for MR220873