

Product datasheet for **MR220836**

Slc5a6 (NM_177870) Mouse Tagged ORF Clone

Product data:

Product Type:	Expression Plasmids
Product Name:	Slc5a6 (NM_177870) Mouse Tagged ORF Clone
Tag:	Myc-DDK
Symbol:	Slc5a6
Synonyms:	E430023I20
Mammalian Cell Selection:	Neomycin
Vector:	pCMV6-Entry (PS100001)
E. coli Selection:	Kanamycin (25 ug/mL)



[View online »](#)

ORF Nucleotide
Sequence:

>MR220836 representing NM_177870
Red=Cloning site Blue=ORF Green=Tags(s)

TTTTGTAATACGACTCACTATAGGGCGGCCGGAATTCGTCGACTGGATCCGGTACCGAGGAGATCTGCC
GCCGCGATCGCC

ATGAGTGTGGCGAGCACTGCAGCTCCCTCCATACAACCTCAGGCTCCAGCGGGCTATTTCTACCTTTT
CTGTTGTGGACTATGTGGTATTTGGCCTGTTGCTGGTCCCTCCCTTGTCATTGGGCTCTATCATGCTTG
TCGTGGCTGGGGCCACCATAACCGTTGGTGAAGTCTGATGGCAGACCGAAAAATGGGCTGTCTTCTGTG
GCACTGTCCTTGCTGGCCACCTCCAGTCAGCCGTGGCCATCCTGGGAGCACCAGCTGAGATCTTCCGAT
TTGGAACCCAGTATTGGTTCCTGGGGTCTCCTACTTCTGGGGCTCCTGATCCCTGCTCACATCTTCAT
CCCTGTCTTACCGTCTGCATCTGACCAGCGCCTATGAGTACCTAGAGCTCCGTTCAATAAAGCAGTT
CGGATCTGTGGGACTGTGACCTTCATCTTTCAGATGGTGATACATGGGAGTTGCTCTCTATGCACCAT
CCTTGGCCCTCAATGCAGTGACTGGATTTGATTTATGGCTGTGAGTGGCCCTAGGAATTGTCTGCAA
CATCTACACTGCACTGGGTGGGCTGAAGCTGTCTGACAGATGTGTTCCAAACACTGGTCATGTTT
CTCGGGCAGCTGGTAGTGATCATTGTAGGAGCAGCCAGAGTGGGTGGCTTGGGCCATGTATGGAATGTGA
CTTCCCAGCATGGCCTCATCTCTGGGATTAACCTGGATCCTGACCCCTTTGTGCGTCATACTTTCTGGAC
TTTGGCCTTTGGAGGTGTCTTCATGATGCTCTCCTTGTATGGAGTGAATCAGGCTCAGGTGCAGCGCTAC
CTCAGTCCCCTCGGAGAGAGCTGCTGTGCTCTCCTGCTATGCAGTGTCCCTTGGCAGCAAGTGGCC
TCTGCATGAGTGCCTCATTGGTCTGGTGTGTTGCCTATTATAACATGTATAGCATGAGCCCCGAGCT
GAAGCAAGCAGCCCTGACCAGTTAGTCTCTATTTGTGATGGACCTCCTGAAAGACATGCCAGGGCTG
CCTGGGCTCTTCGTTGCCTGTCTCTTTCAGTGGATCTCTCAGCACCATATCCTCTGCATTCATCACTGG
CAACTGTCACGATGGAAGACCTGATCCAGCCCTGGTCCCACAGTTGACTGAAACTCGGGCCATCATGCT
TTCTCGAGGCCTTGCCTTTCCTATGGGCTAGTTTGCCTGGGAATGGCCTATATTTCTCTCATCTGGGA
TCAGTGTCCAGGCAGCACTCAGTATCTTTGGCATGGTTGGAGGGCCACTGCTGGGACTCTTCTGCCTTG
GACTGTTCTTCCCATGCGCCAACCCTCTTGGTGCATTGTAGGCCTGTTGACGGGACTCACCATGGCCTT
CTGGATCGGCATTGGGAGCATAGTAAGCAGGATGAGTTCTGCTGTGGCACCCTCCCTTAATGGATCC
AGCTCCTTCTGCCTGCCAATGTAAGTGTGCGCCGCTGTGACCACCGTGTGCTTCTACCCTGTCCAAGC
CCACAGGACTGCAGCACTTCTATCCCTGTCTATTTATGGTACAGCGCGCACAACCTCCACCACAGTCAT
TGTAGTGGCCTGATTGTCAGTCTGCTCACTGGGGGAATGCGGGCCGGTCCCTGAACCCCGGCACCATT
TACCCTGTGCTGCCAAGCTCCTAGCACTCCTGCCCTATCCTGCCAGAAGCGGCTTTGCTGGAGAAGCC
ACAGCCAGGATATCCCTGTGATCCCAACCTGTTTCCAGAGAAGATGAGGAATGGGGTGTGAGGACAG
CACAGACAAAGAGAGGATGGCTGAAGATGGCCTCGTCCACCAGCCGTGCAGCCCTACCTACGTTGTCCAG
GAGACCTCCCTG

ACGCGTACGCGGCCGCTCGAGCAGAACTCATCTCAGAAGAGGATCTGGCAGCAATGATATCCTGGATT
ACAAGGATGACGACGATAAGGTTTAA

Protein Sequence: >MR220836 representing NM_177870
 Red=Cloning site Green=Tags(s)

MSVASTAAPFHHTSGSSGAISTFSVVDYVVFGLLLVLSLVIGLYHACRGGHHTVGELLMADRKMGCPLPV
 ALSLLATFQSAVAILGAPAEIFRFGTQYWFLGCSYFLGLLIPAHIFIPVFYRLHLTSAYEYLELRFNKAV
 RICGTVTFIFQMVIMGVALYAPSLALNAVTFGDLWLSVLALGIVCNIIYALGGLKAVIWDVFQTLVMF
 LGQLVVIIVGAARVGGGLGHVWVNTSQHGLISGINLDPDPFVRHTFWTLAFGGVFMMLSLYGVNQAQVQRY
 LSSHSEAAVLSYAVFPCQQVALCMSCLIGLVMFAYYNYMSMPELKQAAPDQLVLYFVMDLLKDMPLG
 PGLFVACLFSGSLSTISSAFNSLATVTMEDLIQPWFQTLTETRAIMLSRGLAFAYGLVCLGMAYISSHLG
 SVLQAALSIFGMVGGPLLGLFCLGLFFPCANPLGAIVGLLTLGLTMAFWIGIGSIVSRMSSAVAPPLNGS
 SSFLPANVTAAVTTVMPSTLSKPTGLQHFYSLSYLWYSAHNSTTVIVVGLIVSLLTGGMGRSLNPGTI
 YPVLKLLALLPLSCQKRLCWRSHSQDIPVIPNLFPFKMRNGVLQDSTDKERMAEDGLVHQPCSPYVVVQ
 ETSL

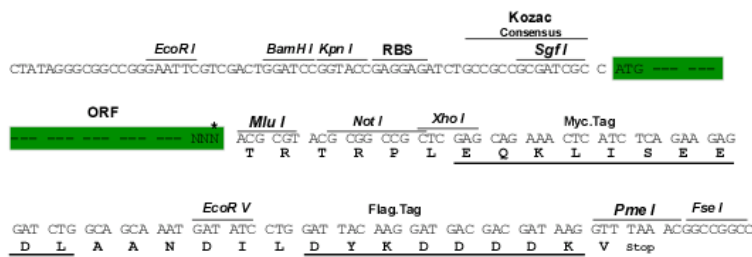
TRTRPLEQKLISEEDLAANDILDYKDDDDKV

Chromatograms: https://cdn.origene.com/chromatograms/mm9029_e08.zip

Restriction Sites: SgfI-MluI

Cloning Scheme:

Cloning sites used for ORF Shuttling:



* The last codon before the Stop codon of the ORF

ACCN: NM_177870

ORF Size: 1902 bp

OTI Disclaimer: The molecular sequence of this clone aligns with the gene accession number as a point of reference only. However, individual transcript sequences of the same gene can differ through naturally occurring variations (e.g. polymorphisms), each with its own valid existence. This clone is substantially in agreement with the reference, but a complete review of all prevailing variants is recommended prior to use. [More info](#)

OTI Annotation: This clone was engineered to express the complete ORF with an expression tag. Expression varies depending on the nature of the gene.

Components: The ORF clone is ion-exchange column purified and shipped in a 2D barcoded Matrix tube containing 10ug of transfection-ready, dried plasmid DNA (reconstitute with 100 ul of water).

Reconstitution Method:

1. Centrifuge at 5,000xg for 5min.
2. Carefully open the tube and add 100ul of sterile water to dissolve the DNA.
3. Close the tube and incubate for 10 minutes at room temperature.
4. Briefly vortex the tube and then do a quick spin (less than 5000xg) to concentrate the liquid at the bottom.
5. Store the suspended plasmid at -20°C. The DNA is stable for at least one year from date of shipping when stored at -20°C.

RefSeq: [NM_177870.5](#), [NP_808538.1](#)

RefSeq Size: 3344 bp

RefSeq ORF: 1905 bp

Locus ID: 330064

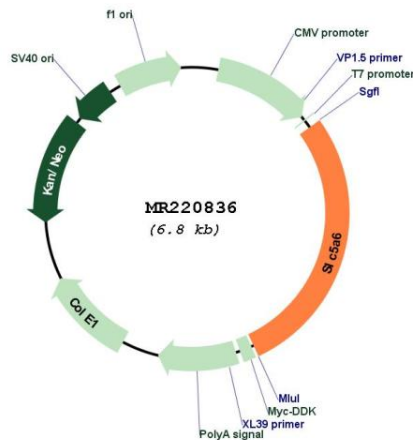
UniProt ID: [Q5U4D8](#)

Cytogenetics: 5 B1

MW: 69 kDa

Gene Summary: Transports pantothenate, biotin and lipoate in the presence of sodium.[UniProtKB/Swiss-Prot Function]

Product images:



Circular map for MR220836