

## Product datasheet for **MR220801**

### Igsf5 (NM\_001177887) Mouse Tagged ORF Clone

#### Product data:

Product Type:	Expression Plasmids
Product Name:	Igsf5 (NM_001177887) Mouse Tagged ORF Clone
Tag:	Myc-DDK
Symbol:	Igsf5
Synonyms:	2010003D20Rik; Jam4; JCAM
Mammalian Cell Selection:	Neomycin
Vector:	pCMV6-Entry (PS100001)
E. coli Selection:	Kanamycin (25 ug/mL)
ORF Nucleotide Sequence:	>MR220801 representing NM_001177887 Red=Cloning site Blue=ORF Green=Tags(s)

TTTTGTAATACGACTCACTATAGGGCGGCCGGAATTCGTCGACTGGATCCGGTACCGAGGAGATCTGCC  
GCC**CGATCGCC**

ATGGAGGGCAGCTGGAGAGATGTCCTGGCTGTGCTGGTCATCCTGGCTCAGCTGACAGCTCCGGATCCA  
GTTATCAGATCATAGAAGTCTCAGAATGTAACAGTCTAAAGGACTCAGAGGCTCACTTCAACTGCAC  
CGTGACTCAGGGCTGGAAGCTTCTCATGTGGACTTTAACAAATGGTGGTGTGAGTCTCACCACCCAA  
GGACCCATCATACCAACAACCGCTTACCTATGCCAGTTACAACAGCACTGACAGCTTCATCTCGGAGT  
TGATCATCCATGATGTGCAGCCAGTGACTCGGGATCCGTGCAATGCAGCCTGCAGAACAGCCATGGGTT  
TGGATCTGCCTTCTCAGTGAAGTCATGCGGACCTGAACATTCCTAGCAACAACCTTATAGTCACT  
GAGGGTGAACCTGTAATGTGACTTGCTATGCCGTGGGCTGGACCTCACTCCCGGATATTTCTGGGAGC  
TTGAGGTTCCCGTAAGCCATTGAGTTACAATTCCTTTCTGGAGCCGGGCAACTTATGAGGGTCTTGAG  
TGTCTGGACCTCACACCACTGGGCAACGGGACCTTGACTTGTGTGGCAGAGCTGAAGGACTTGCAGGCC  
AGCAAGTCCTTAAGTGTCAACCTGACTGTGTTTCAGCCTCACCTGACAGTATTGGAGAGGAAGGCCAG  
CACTGCCGACCTGGGCCATCATCTGCTGGCAGTGGCCTTTCTTGTCTTGTATCTGATCATTGTTTT  
GATTATAATATTCTGTTGCTGTTGTGCCTCCAGGAGAGAAAAGGAAGAATCTACTTATCAAAATGAATA  
AGGAAATCTGAAACATGAGGACAAACAAGCAGATCCGGAGACAAAGTTAAAAAGTGGAAAGGAAAAT  
ACGGGTACAGTTCGGATGAGGCAAGGCTGCACAGACTGCATCTCCCTCCTAAATCTGCTGAAGTCAG  
CCTTCCAGAAAAACGCAGCAGTAGCCTTCTTATCAGGAACTCAATAAACATCAGCCCGGTCCAGCAACT  
CATCCACGGGTTTCTTTGACATCGCCAGTCTCAGAAGGTCAGAAATGTGACTTTAGTG

**ACGCGT**ACGCGGCCGCTCGAGCAGAAACTCATCTCAGAAGAGGATCTGGCAGCAATGATATCCTGGATT  
ACAAGGATGACGACGATAAGGTTAA



[View online »](#)

**Protein Sequence:** >MR220801 representing NM\_001177887  
 Red=Cloning site Green=Tags(s)

MEGSRDVLAVLVILAQLTASGSSYQIIIEGPQNVTVLKDSEAHFNCTVTHGWKLLMWTLNQMVVLSTTQ  
 GPIITNNRFTYASYNSTDSFISELIIHDVQPSDSGVSQCSLQNSHGFGSAFLSVQVMGTLNIPSNLIVT  
 EGEPNCVTCYAVGWTSPLDISWELEVVPVSHSSYNSFLEPGNFMRVLSVLDLTPLGNGTLTCVAELKDLQA  
 SKSLTVNLTVVQPPPDSIGEEGPALPTWAIILLAVAFSLLLILIIIVLIIIFCCCCASRREKEESTYQNEI  
 RKSANMRTNKADPETKLSGKENYGYSSDEAKAAQTASLPPKSAEYVSLPEKRSSSLPYQLNKHQPGPAT  
 HPRVSDIASPQKVRNVTLV

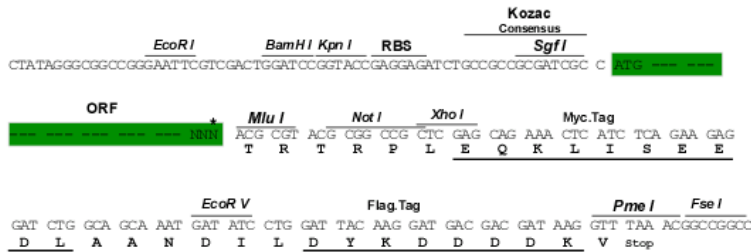
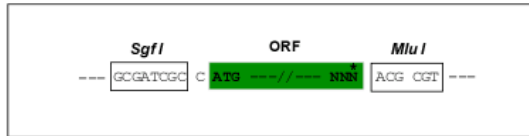
TRTRPLEQKLISEEDLAANDILDYKDDDDKV

**Restriction Sites:**

SgfI-MluI

**Cloning Scheme:**

Cloning sites used for ORF Shuttling:



\* The last codon before the Stop codon of the ORF

**ACCN:** NM\_001177887

**ORF Size:** 1110 bp

**OTI Disclaimer:** The molecular sequence of this clone aligns with the gene accession number as a point of reference only. However, individual transcript sequences of the same gene can differ through naturally occurring variations (e.g. polymorphisms), each with its own valid existence. This clone is substantially in agreement with the reference, but a complete review of all prevailing variants is recommended prior to use. [More info](#)

**OTI Annotation:** This clone was engineered to express the complete ORF with an expression tag. Expression varies depending on the nature of the gene.

**Components:** The ORF clone is ion-exchange column purified and shipped in a 2D barcoded Matrix tube containing 10ug of transfection-ready, dried plasmid DNA (reconstitute with 100 ul of water).

**Reconstitution Method:**

1. Centrifuge at 5,000xg for 5min.
2. Carefully open the tube and add 100ul of sterile water to dissolve the DNA.
3. Close the tube and incubate for 10 minutes at room temperature.
4. Briefly vortex the tube and then do a quick spin (less than 5000xg) to concentrate the liquid at the bottom.
5. Store the suspended plasmid at -20°C. The DNA is stable for at least one year from date of shipping when stored at -20°C.

**RefSeq:** [NM\\_001177887.1](#), [NP\\_001171358.1](#)

**RefSeq Size:** 1907 bp

**RefSeq ORF:** 1113 bp

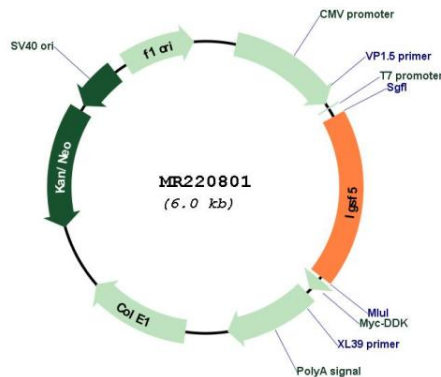
**Locus ID:** 72058

**Cytogenetics:** 16 C4

**MW:** 40.8 kDa

**Gene Summary:** Provides, together with MAGI1, an adhesion machinery at tight junctions, which may regulate the permeability of kidney glomerulus and small intestinal epithelial cells. Mediates calcium-independent homophilic cell adhesion. In testis, it may function as a cell adhesion molecule rather than a tight-junction protein. It may participate in the adhesion between spermatogonia-spermatogonia, spermatogonia-Sertoli cells, and Sertoli cells-Sertoli cells. [UniProtKB/Swiss-Prot Function]

### Product images:



Circular map for MR220801