

Product datasheet for **MR220702**

Wdpcp (NM_145425) Mouse Tagged ORF Clone

Product data:

Product Type:	Expression Plasmids
Product Name:	Wdpcp (NM_145425) Mouse Tagged ORF Clone
Tag:	Myc-DDK
Symbol:	Wdpcp
Synonyms:	AV249152
Mammalian Cell Selection:	Neomycin
Vector:	pCMV6-Entry (PS100001)
E. coli Selection:	Kanamycin (25 ug/mL)



[View online »](#)

ORF Nucleotide Sequence:

>MR220702 ORF sequence
 Red=Cloning site Blue=ORF Green=Tags(s)

TTTTGTAATACGACTCACTATAGGGCGGCCGGAATTCGTCGACTGGATCCGGTACCGAGGAGATCTGCC
 GCC**CGATCGC**C

ATGTCCTTCTGCTTGACTGAACTACACCTGTGGTCTCTGAAAAGCACCTTACACATTGCGGATAGAGACA
 TCGGCGTCTACCAGTACTATGACAAGAAAGATCCATCAGTATCAGCAACAGAGCATGGTAACTTAGAAGA
 AAAACAAAGGCTGGCAGAATCACGAGATTATCCTTGGACACTCAAAAATAGACGCCAGAAAACTTCGA
 GATTCAGTGAAGGAGTTGGAGGAACTGATGCAAAGCAGTCCGTGTGTGCTGAGCAAATGGAAGAGCAAAT
 ACATCTGCCAGCTCCTGTTTGGTTCAGGTGTGCTGGTGTCCCTAAGTCTTCTGGGCCTCAGCTGGAGAA
 AGTGGTGATTGACAGAAGCCTGGTGGGGAAGCTCATCTCAGACACCATCAGTGTGCTCTCCTTACAGAC
 AGTTTCATCATCTTATCATTTCTGGCACAAAACAACTATGTTTTATTAGTTTACAAAGAAAATGGATT
 CTCTTGATGGAACAAGAGGCTGGAGAACTCTCAGCCTTGGACCTTAAGATTTCTATTATGACATACC
 TGGCCAGCCAACAGGACAATAGATCGTCACTTAGCTGTCAACTCCACTCAGGATCTAGTTGTTTGTGG
 TGCCCGCTGGTCACTGATGATGTTTGGCCTTGGACTCCAGTTTCTCTGAGAAGGACAGAGCCAATATGC
 TGGTGGTGGGCTTACTCAAGGAGGATTGGAGGTTCTAAGTTTTGTTTCGACAGAATGGAGTCCCTGGA
 TGTTCACTTCCGACCAAACAACCTTATCAGGTGTTACAGTGGAGTGTCCGTCAGTGTAGACAAGGAG
 CCCATGGCTGACAGCTGTATTTAAGTCTGTCCGGAACAACTCCACTGCGTGTGAGTACCAGAATAC
 CACTAAGATCGAAGGCCATCAGCTGTGCGAGAACTCTACGGAAGACAACTGATCGTGGGCTGTGAAGA
 CTCTTCAGTAATCTCTATGAAGCTCACCGTGGTGTGACTCTCCTGGCCAGGCTGAACTTAGGCCTTCA
 TTGATAAGCTGCCACCAAGTGGCGCCATTCTTCTGGTGGCAGCAACCAAGGGGAGCTACAAATTTTTG
 ATATTGCTCTGTCCCCTATCAACATCCAGCTCTTGGCAGAAGATTACTCACCGAAGGAGACTCTGCAAT
 CAAGAAGTTCTTTGATGTTTCAAGCAGTCTTGTCAAATGCAGTGGATGGCTCCTCCTGTTGTTTTCCAG
 AAGCCTAAAAGAGGAGAAATCTGTGATCTTCTTCTCAGGTTCAACAAAGGACCTTTGGGTGTGCTAC
 TGTTTAAACTTGGCATCCTCACACGAGGACAAGTGGCCTGGTAGACCTCATCTTACAGTACATTACTA
 CAGTGAGGTATATGAGGCCATCAGCATCCTGCGCAGCATGGACTGGGACACCCTGGGCCAGCAGTGTG
 ATCGGCATGGGCACCATCGTGAACCATCTTCTTAGACAGAGGCTCACACCAGAGAGAGAAGCACAGCTT
 AGGCGAGCCTTGGAACCTTCTATGCTCCAACAAGACCCTTCTGGATACTAATTTTTGGAATATAGAGA
 GCCAGTCAGCAAGTATGCCAGGAGGCTCTCCACCACCTGCTCAGGTACAAGAGATTTGAAAAGGCCTT
 CTTCTAGCTGTTGACATTGGAGCTCGTGACCTGTTTATGACATTCACTTACCTTGTCTAGATATGGGT
 AACTGGCACTGGCTGAAGTGGCAAGAAGAAGGGCGCATGATATTGATGTTGAGTCACTATCCTCTGGAGT
 CGAGCTCCTGGGCCCCTGGACAGAAGAGACATGCTGAATGAAGTTTTGCCAGCTCAGCTCTATGCCCT
 GAAGGAGAAAAAAGTTTCCAGGCCTTCTTCTCCATTGGTTCAACACATGCAAACTCTTCAACAGA
 AAATACCAATGGCCCTTCAAGCAGATGGGCAATTGAGAGAAGGACTGAGGAAGAAGAGGAGGAGGAGGA
 GGAGGAAGAGGAGGAGTTATGCACTGACTCTCAGGGGCCACCACCTGGAATGCAGAAGGAGAACTGAAA
 GAAGACCAAGGAAACAGGACATTGGAGATGTTGGTCTCTCAGAATGGTTCACCTTGGTTTGGT

ACGCGTACGCGGCCGCTCGAGCAGAACTCATCTCAGAAGAGGATCTGGCAGCAAATGATATCCTGGATT
 ACAAGGATGACGACGATAAGGTTTAA

Protein Sequence: >MR220702 protein sequence
 Red=Cloning site Green=Tags(s)

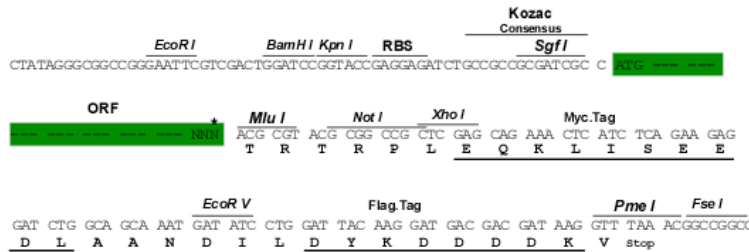
```
MSFCLTELHLWLSKSTLHIADRIDGVYQYYDKKDPSSVATEHGNLEEKQRLAESRDYPWTLKNRRPEKLR
DSLKELEELMQSSPCVL SKWWSKYICQLLFGSGVLVSLSLSGPQLEKVVIDRSLVGK LISDTISDALLTD
SF IILSFLAQNKLCFIQFTKKMDSL DGNKRLEKLSALDLKISYYDIPGPANRTIDRHLAVNSTQDLVVCW
WPLVSDDVWPWTPVSSSEKDRANMLLLGFTQGGLEVL SFVRTEWSPLDVHFGTKQPYQVFTVECSVSDKE
PMADSC IYESVRNKLHCVSVTRIP LRSKAISSCRNSTEDKLIVGCESSVILYE AHRGVTL LAQAELRPS
LISCHPSGAILLVGSNQGELQIFDIALSPINIQLLAEDYSPKETLQFKKFFDVSSSLVQM QWMA PPVVFQ
KPKRGEICDLLFLRFNKGPLGVLLFKLGILTRGQLGLVDLILQYIHYSEVYE AISILRSMWDWTLGQQCL
IGMGTIVNHLLRQRLTPEREAQLEASLGT FYAPTRPLD TTTILEYREPVSKYARRLFHLLRYKRFEKAF
LLAVDIGARDLFMDIHYLALDMGELALAEVARRRAHDIDVESVSSGV ELLGPLDRR DMLNEGFASSALMP
EGENKFPGLLPSIGSTHMQLQKIPNGPSSRWAIERRTEEEEEEEEEEEELCTDSSGATTWNAEGLK
EDQRKQDIGDVGSLRMVHFGLV
```

TRTRPLEQKLI SEEDLAANDILDYKDDDDKV

Restriction Sites: SgfI-MluI

Cloning Scheme:

Cloning sites used for ORF Shuttling:



* The last codon before the Stop codon of the ORF

ACCN: NM_145425

ORF Size: 2169 bp

OTI Disclaimer: The molecular sequence of this clone aligns with the gene accession number as a point of reference only. However, individual transcript sequences of the same gene can differ through naturally occurring variations (e.g. polymorphisms), each with its own valid existence. This clone is substantially in agreement with the reference, but a complete review of all prevailing variants is recommended prior to use. [More info](#)

OTI Annotation: This clone was engineered to express the complete ORF with an expression tag. Expression varies depending on the nature of the gene.

Components: The ORF clone is ion-exchange column purified and shipped in a 2D barcoded Matrix tube containing 10ug of transfection-ready, dried plasmid DNA (reconstitute with 100 ul of water).

Reconstitution Method:

1. Centrifuge at 5,000xg for 5min.
2. Carefully open the tube and add 100ul of sterile water to dissolve the DNA.
3. Close the tube and incubate for 10 minutes at room temperature.
4. Briefly vortex the tube and then do a quick spin (less than 5000xg) to concentrate the liquid at the bottom.
5. Store the suspended plasmid at -20°C. The DNA is stable for at least one year from date of shipping when stored at -20°C.

RefSeq: [NM_145425.3](#), [NP_663400.2](#)

RefSeq Size: 2443 bp

RefSeq ORF: 2169 bp

Locus ID: 216560

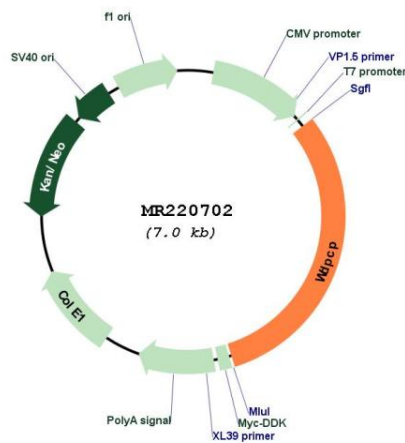
UniProt ID: [Q8C456](#)

Cytogenetics: 11 13.9 cM

MW: 81.7 kDa

Gene Summary: Probable effector of the planar cell polarity signaling pathway which regulates the septin cytoskeleton in both ciliogenesis and collective cell movements. Together with FUZ and WDPCP proposed to function as core component of the CPLANE (ciliogenesis and planar polarity effectors) complex involved in the recruitment of peripheral IFT-A proteins to basal bodies (PubMed:27158779).[UniProtKB/Swiss-Prot Function]

Product images:



Circular map for MR220702