

## Product datasheet for MR220675

### Rpf2 (NM\_023323) Mouse Tagged ORF Clone

#### Product data:

**Product Type:** Expression Plasmids  
**Product Name:** Rpf2 (NM\_023323) Mouse Tagged ORF Clone  
**Tag:** Myc-DDK  
**Symbol:** Rpf2  
**Synonyms:** 2810470K21Rik; AU040229; AU043242; Bxdc1  
**Mammalian Cell Selection:** Neomycin  
**Vector:** pCMV6-Entry (PS100001)  
**E. coli Selection:** Kanamycin (25 ug/mL)  
**ORF Nucleotide Sequence:** >MR220675 representing NM\_023323  
 Red=Cloning site Blue=ORF Green=Tags(s)

TTTTGTAATACGACTCACTATAGGGCGGCCGGAATTCGTCGACTGGATCCGGTACCGAGGAGATCTGCC  
 GCC**CGATCGCC**

ATGGATGCTTTGGACAAAGTTCTAAAGCCTAAAACAAAAGGGCTAAGAGATTCCTTGAGAAGAGAGAAC  
 CGAAACTCACTGAGAACATTAAGAATGCCATGCTGATTAAGGCGGAAATGCAAATGCAACCGTGACACA  
 AGTACTCAGAGACATGTATGCACTGAAGAAACCATATGGAGTTCTCTATAAAAAGAAAAATATTACAAGA  
 CCATTTGAGGATCAGACGTCCTGGAGTTCTTTCAAAGAAGTCAGACTGCTCTTATTCATGTTTGGCT  
 CCCATAACAAGAAGAGGCCAAATAACCTAGTAATAGGTCGTATGTATGACTACCATGTGCTGGATATGAT  
 TGAATTAGGTATTGAGAAATTTGTGTCTCTAAAAGATATTAAGACTAGTAAGTGCCCGAGGGAACAAAA  
 CCGATGTTGATATTTGCTGGTGATGATTTTGTATGTAACAGAAGACTTCAGAAGATTAATAAATCTTCTTA  
 TTGATTTCTTCAGAGGCCCCACAGTATCGAACGTCGGCTGGCTGGATTAGAGTATGTTCTGCACCTCAC  
 TGCCTGAATGGGAAGTTTACTTCCGAAGCTATAAGCTGCTGTTGAAGAAATCTGGGTGCAGAACCAGC  
 CGAATCGAGCTAGAAGAGATGGGACCATCACTGGACCTGGTCATGAGGAGGACACACCTAGCATCAGATG  
 ACCTTTATAAACTGTCCATGAAAGTGCCCAAGGCTCTCAAGCCAAAGAAGAGAAAGAATATCTCTCAGGA  
 TACTTTTGGCACAAACATTTGGAAGGATTCATATGCAAAAGCAAGACTTAAGCAAACATAAACGAGGAAA  
 ATGAAGGGTTGAAGAAGCGACCTGCAGAGAATGGAGTAGACGACCAGGGGAAAAAATCAAAGAGAATTA  
 AGAAAAAT

**ACGCGT**ACGCGGCCGCTCGAGCAGAAACTCATCTCAGAAGAGGATCTGGCAGCAAATGATATCCTGGATT  
 ACAAGGATGACGACGATAAGGTTTAA



[View online »](#)

**Protein Sequence:** >MR220675 representing NM\_023323  
Red=Cloning site Green=Tags(s)

MDALDKVLKPKTKRAKRFLEKREPKL TENIKNAML IKGGNANATVTQVLRDMYALKKPYGVLYKKKNITR  
 PFEDQTSLEFFSKKSDCSLFMFGSHNKKRPNNL VIGRMYDYHVLDMIELGIEKFVSLKDIKTSKCPEGTK  
 PMLIFAGDDFDVTEDFRRLKNLLIDFFRGPTVSNVRLAGLEYVLHFTALNGKVYFRSYKLLLLKKS GCRT  
 RIELEEMGPSLDLVMRRTHLASDDLYKLSMKVPAKPKPKRKNISQDTFGTTFGRIHMQKQDL SKLQTRK  
 MKGLKKRPAENGVDDQGGKSKRIKKN

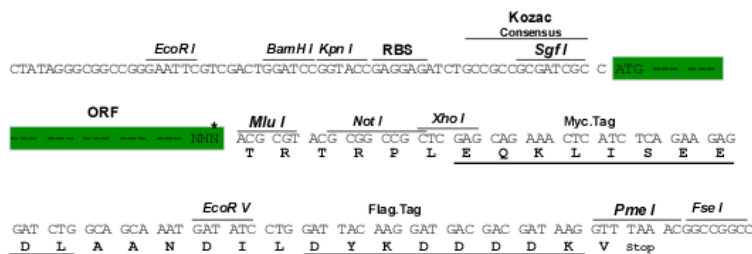
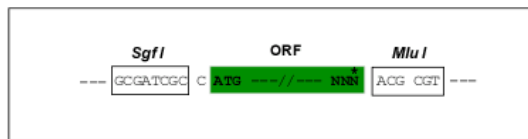
TRTRPLEQKLISEEDLAANDILDYKDDDDKV

**Chromatograms:** [https://cdn.origene.com/chromatograms/mm9059\\_f12.zip](https://cdn.origene.com/chromatograms/mm9059_f12.zip)

**Restriction Sites:** SgfI-MluI

**Cloning Scheme:**

Cloning sites used for ORF Shuttling:



\* The last codon before the Stop codon of the ORF

**ACCN:** NM\_023323

**ORF Size:** 918 bp

**OTI Disclaimer:** The molecular sequence of this clone aligns with the gene accession number as a point of reference only. However, individual transcript sequences of the same gene can differ through naturally occurring variations (e.g. polymorphisms), each with its own valid existence. This clone is substantially in agreement with the reference, but a complete review of all prevailing variants is recommended prior to use. [More info](#)

**OTI Annotation:** This clone was engineered to express the complete ORF with an expression tag. Expression varies depending on the nature of the gene.

**Components:** The ORF clone is ion-exchange column purified and shipped in a 2D barcoded Matrix tube containing 10ug of transfection-ready, dried plasmid DNA (reconstitute with 100 ul of water).

**Reconstitution Method:**

1. Centrifuge at 5,000xg for 5min.
2. Carefully open the tube and add 100ul of sterile water to dissolve the DNA.
3. Close the tube and incubate for 10 minutes at room temperature.
4. Briefly vortex the tube and then do a quick spin (less than 5000xg) to concentrate the liquid at the bottom.
5. Store the suspended plasmid at -20°C. The DNA is stable for at least one year from date of shipping when stored at -20°C.

**RefSeq:** [NM\\_023323.3](#), [NP\\_075812.3](#)

**RefSeq Size:** 1480 bp

**RefSeq ORF:** 921 bp

**Locus ID:** 67239

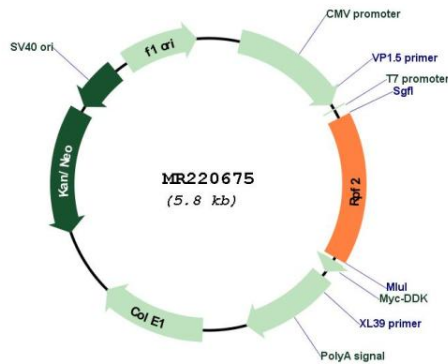
**UniProt ID:** [Q9J180](#)

**Cytogenetics:** 10 B1

**MW:** 35.4 kDa

**Gene Summary:** Involved in ribosomal large subunit assembly. May regulate the localization of the 5S RNP/5S ribonucleoprotein particle to the nucleolus.[UniProtKB/Swiss-Prot Function]

### Product images:



Circular map for MR220675