

Product datasheet for MR220631L4

Bace2 (NM_019517) Mouse Tagged Lenti ORF Clone

Product data:

| | |
|---------------------------|---|
| Product Type: | Expression Plasmids |
| Product Name: | Bace2 (NM_019517) Mouse Tagged Lenti ORF Clone |
| Tag: | mGFP |
| Symbol: | Bace2 |
| Synonyms: | 1110059C24Rik; A; AEPLC; AI850424; AL; ALP56; ARP1; AS; ASP1; ASP21; BAE; BAE2; CDA1; CDA13; CEA; CEAP1; DRAP |
| Mammalian Cell Selection: | Puromycin |
| Vector: | pLenti-C-mGFP-P2A-Puro (PS100093) |
| E. coli Selection: | Chloramphenicol (34 ug/mL) |
| ORF Nucleotide Sequence: | The ORF insert of this clone is exactly the same as(MR220631). |
| Restriction Sites: | SgfI-MluI |
| Cloning Scheme: | |

Cloning sites used for ORF Shuttling:



* The last codon before the Stop codon of the ORF.

| | |
|-----------|-----------|
| ACCN: | NM_019517 |
| ORF Size: | 1542 bp |



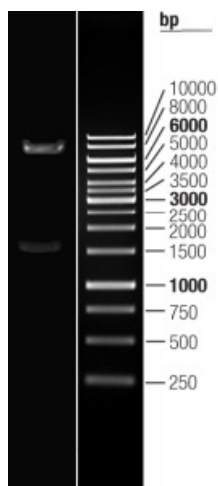
[View online »](#)

| | |
|-------------------------------|---|
| OTI Disclaimer: | The molecular sequence of this clone aligns with the gene accession number as a point of reference only. However, individual transcript sequences of the same gene can differ through naturally occurring variations (e.g. polymorphisms), each with its own valid existence. This clone is substantially in agreement with the reference, but a complete review of all prevailing variants is recommended prior to use. More info |
| OTI Annotation: | This clone was engineered to express the complete ORF with an expression tag. Expression varies depending on the nature of the gene. |
| Components: | The ORF clone is ion-exchange column purified and shipped in a 2D barcoded Matrix tube containing 10ug of transfection-ready, dried plasmid DNA (reconstitute with 100 ul of water). |
| Reconstitution Method: | <ol style="list-style-type: none">1. Centrifuge at 5,000xg for 5min.2. Carefully open the tube and add 100ul of sterile water to dissolve the DNA.3. Close the tube and incubate for 10 minutes at room temperature.4. Briefly vortex the tube and then do a quick spin (less than 5000xg) to concentrate the liquid at the bottom.5. Store the suspended plasmid at -20°C. The DNA is stable for at least one year from date of shipping when stored at -20°C. |
| RefSeq: | NM_019517.4 , NP_062390.3 |
| RefSeq Size: | 3736 bp |
| RefSeq ORF: | 1545 bp |
| Locus ID: | 56175 |
| UniProt ID: | Q9JL18 |
| Cytogenetics: | 16 C4 |
| Gene Summary: | This gene encodes a member of the peptidase A1 family of aspartic proteases. The encoded preproprotein undergoes proteolytic processing to generate an active endopeptidase enzyme. This transmembrane protease catalyzes the proteolysis of amyloid precursor protein to produce amyloid beta peptide. Mice lacking the encoded product exhibit increased pancreatic beta cell mass and improved glucose tolerance due to increased insulin secretion. [provided by RefSeq, Jul 2016] |

Product images:



Circular map for MR220631L4



Double digestion of MR220631L4 using SgfI and MluI