

## Product datasheet for MR220588

### Foxe1 (NM\_183298) Mouse Tagged ORF Clone

#### Product data:

Product Type: Expression Plasmids  
 Product Name: Foxe1 (NM\_183298) Mouse Tagged ORF Clone  
 Tag: Myc-DDK  
 Symbol: Foxe1  
 Synonyms: Titf2  
 Mammalian Cell Selection: Neomycin  
 Vector: pCMV6-Entry (PS100001)  
 E. coli Selection: Kanamycin (25 ug/mL)  
 ORF Nucleotide Sequence: >MR220588 representing NM\_183298  
 Red=Cloning site Blue=ORF Green=Tags(s)

TTTTGTAATACGACTCACTATAGGGCGGCCGGAATTCGTCGACTGGATCCGGTACCGAGGAGATCTGCC  
 GCC**CGATCGCC**

ATGACGGCCGAGAGCGCGCCGCTCCCCGCGCAGCCGAGACGCTGGCGGCCGTGAAGGAAGAGCGCG  
 GTGAGGCGGCGGGCGGGCGCGGGGTCCCGCGGAGGCTGCGGGTCCGGCGCGGGAGGACGGCGACG  
 CAAGCGCCCCCTGCAGCGGGGAAGCCGCCCTACAGCTACATCGCGCTCATCGCTATGGCCATCGCGCAC  
 GCGCCCGAGCGCCGCTGACTCTGGCGGCATCTACAAGTTCATCACCAGCGCTTCCCGTTCTACCGCG  
 ACAACCCCAAGAAGTGGCAGAACAGCATCCGCCACAACCTCACCTCAACGACTGCTTCCCAAGATCCC  
 GCGCGAGCGGGCCGCCGGGAAGGGCAATTACTGGCGCTCGACCCCAACGCCGAGGACATGTTGAA  
 AGCGGCAGCTTCTGCGCCGCCAAGCGCTTCAAGCGCTCGGACCTGTCCACCTACCCGGCCTACATGC  
 ACGATGACGCGCTGCCCGCCGCTGCCGCTGCCGCCATCTTCCGGGCGCCGTGCCTGCCGAAGGCC  
 GGCTTACCCGGGCGCCGTCTATGCGGGTACGCGCCGCACTCGCCGCGCTCCGCGGTCTACTACCC  
 GCCGCTCGCCGGGCGCTGCCGGTCTTCGGTTCGTTCCCGAGCGGCCGCTCAGCCCCGATCTGGCC  
 CCGCGCGTACGCGCCGGCGCTCGTGCCTTCGCGCTGCGCGGGCGCGGGCGGACCGGGAGCTT  
 CCAGCCGGCGGTGTCACCGAGCGCGCGGTCAACCCCGCCGCTATGCCCGCCCTACGCGGGCCCC  
 GACGGCGGTACCCGAAGGAGCGAGTGCCTTTCGCCGCTGCTGCGGGCCGCTGGCCGGACCGC  
 CCTCGCCCCCGGGAGCGCGCAGCGCGCGCTGGAGGCCACGGTGGACTTCTACGGGCGCACGTCCGC  
 GGGCCAGTTCGGAGCGCGCTGGGACCCTGCTACAATCCCGTGGGCAACTCGGAGCCGGTGGTGGCGGT  
 GCCTACCACTCCCGCCACGCCACCGCTACCCGGCGGGTGGATCGGTTCTGTCTGCCATG

**ACGCGT**ACGCGGCCGCTCGAGCAGAACTCATCTCAGAAGAGGATCTGGCAGCAATGATATCCTGGATT  
 ACAAGGATGACGACGATAAGGTTAA



[View online »](#)

**Protein Sequence:** >MR220588 representing NM\_183298

Red=Cloning site Green=Tags(s)

MTAESAPPPPPQPETLAAVKEERGEAAAAGAGVPAEAAAGRGAGRRRKRPLQRGKPPYSYIALIAMAIAH  
 APERRLTLGGIYKFITERFPFYRDNPKKWQNSIRHNLTLNDCFLKIPREAGRPGKGNWALDPNAEDMFE  
 SGSFLRRRKRFRSDLSTYPAYMHDAAAAAAAAAIFPGAVPAARPAYPGAVYAGYAPPLAAPPPVYYP  
 AASPGPCRVFGLVPERPLSPDLGPAPSAAGGSCAFAAAAGAAGTGSFQPAVCTGARPVNPAAYAAAYAGP  
 DGAYPQGASSALFAAAAGRLAGPASPPAGGGSGGVEATVDFYGRTPSPGQFGAALGPCYNPGGQLGAGGGG  
 AYHSRHATAYPGAVDRFVSAM

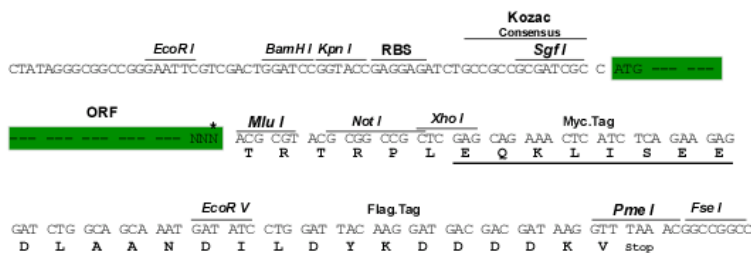
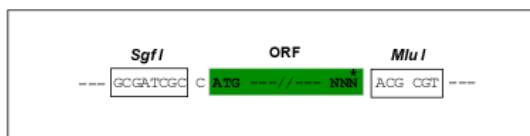
TRTRPLEQKLISEEDLAANDILDYKDDDDKV

**Chromatograms:** [https://cdn.origene.com/chromatograms/mm9037\\_g08.zip](https://cdn.origene.com/chromatograms/mm9037_g08.zip)

**Restriction Sites:** SgfI-MluI

**Cloning Scheme:**

Cloning sites used for ORF Shuttling:



\* The last codon before the Stop codon of the ORF

**ACCN:** NM\_183298

**ORF Size:** 1113 bp

**OTI Disclaimer:** The molecular sequence of this clone aligns with the gene accession number as a point of reference only. However, individual transcript sequences of the same gene can differ through naturally occurring variations (e.g. polymorphisms), each with its own valid existence. This clone is substantially in agreement with the reference, but a complete review of all prevailing variants is recommended prior to use. [More info](#)

**OTI Annotation:** This clone was engineered to express the complete ORF with an expression tag. Expression varies depending on the nature of the gene.

**Components:** The ORF clone is ion-exchange column purified and shipped in a 2D barcoded Matrix tube containing 10ug of transfection-ready, dried plasmid DNA (reconstitute with 100 ul of water).

**Reconstitution Method:**

1. Centrifuge at 5,000xg for 5min.
2. Carefully open the tube and add 100ul of sterile water to dissolve the DNA.
3. Close the tube and incubate for 10 minutes at room temperature.
4. Briefly vortex the tube and then do a quick spin (less than 5000xg) to concentrate the liquid at the bottom.
5. Store the suspended plasmid at -20°C. The DNA is stable for at least one year from date of shipping when stored at -20°C.

**RefSeq:** [NM\\_183298.2](#)

**RefSeq Size:** 1116 bp

**RefSeq ORF:** 1116 bp

**Locus ID:** 110805

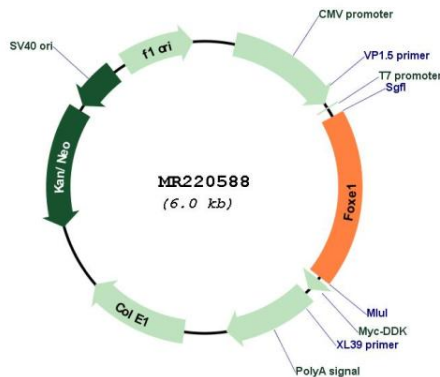
**UniProt ID:** [Q8R2I0](#)

**Cytogenetics:** 4 24.68 cM

**MW:** 38.2 kDa

**Gene Summary:** Transcription factor that binds consensus sites on a variety of gene promoters and activate their transcription. Involved in proper palate formation, most probably through the expression of MSX1 and TGFB3 genes which are direct targets of this transcription factor (PubMed:21177256). Also implicated in thyroid gland morphogenesis (PubMed:9697704). May indirectly play a role in cell growth and migration through the regulation of WNT5A expression (By similarity).[UniProtKB/Swiss-Prot Function]

**Product images:**



Circular map for MR220588