

## Product datasheet for **MR220564**

### Srpk3 (NM\_019684) Mouse Tagged ORF Clone

#### Product data:

Product Type:	Expression Plasmids
Product Name:	Srpk3 (NM_019684) Mouse Tagged ORF Clone
Tag:	Myc-DDK
Symbol:	Srpk3
Synonyms:	Mssk1; Stk23
Mammalian Cell Selection:	Neomycin
Vector:	pCMV6-Entry (PS100001)
E. coli Selection:	Kanamycin (25 ug/mL)



[View online »](#)

**ORF Nucleotide Sequence:**

>MR220564 ORF sequence  
 Red=Cloning site Blue=ORF Green=Tags(s)

TTTTGTAATACGACTCACTATAGGGCGGCCGGAATTCGTCGACTGGATCCGGTACCGAGGAGATCTGCC  
 GCC**CGCATCGCC**

ATGAGTGCCAATGCCGGTGGTAGTGGTAGTGGATTGTGGCGGCAGCAGCAGCAGCTCTCAGACTTCTCT  
 GTGGCCCTGAGTCTCAGGCTCTGAATTAAGTCCAGCCACACCAGCACCTCGTTTGTGCAGGGACTCCT  
 GGGCTCTGATGATGAGGAACAGGAAGACCCTAAGGACTATTGCAAGGGTGGTTACTACCCAGTGAAGATC  
 GGTGATTTGTTCAATGGGCGGTACCATGTGGTGCGAAAGCTAGGCTGGGGCCATTTCTCTACAGTCTGGC  
 TCTGCTGGGATATTCAGCGCAAGCGCTTTGTGGCCCTGAAAGTGGTGAAGAGTGCAGGACATTACACTGA  
 GACAGCCGTGGATGAGATCAAGCTCCTGAAATGTGTGAGGACAGTGACCCTAGTGACCCAAAAGGGAG  
 ACCATTGTTCACTTATCGATGACTTCAGGATCTCAGGAGTAAATGGAGTCCATGTATGCATGGTGTAG  
 AGGTCCTGGGCCACCAGCTCCTCAAGTGGATCATCAAATCCAACCTACCAGGTCTGCCTGTGCCCTGTGT  
 TAAGAGCATTGTTAGACAGGTGTGCATGGTCTGGATTACCTCCATACTAAGTGAAGATCATCCATACG  
 GACATCAAGCCTGAGAACATCTTACTGTGTGTTGGAGATGCCTACATCAGGCGCCTGGCTGCTGAAGCCA  
 CAGAGTGGCAGCAGTCAAGGGCCAGCCCCATCCCGTCCACAGTCAGCACTGCCCCCAGGAGGTCTT  
 GATTGGCAAGCTGTCAAAAACAAGAGGAAGAAGATGAGGCGCAAAAGGAAGCAACAGAAGAGGCTGCTG  
 GAGGAGCGGCTGAGGGACTTGCAGAGGCTAGAGGCTATGGAGGCCGAGTACAAGCTGAGGACTCCAGCT  
 CAAGACTAGAACGGGCGAGCGCTCCACCTCTTCTCAGGCTGCCACCCGGAGGGCACCAGAGCTGGCCC  
 TTCTCCAGCCTCTTCTCCCTGTGCCCTGGGGGGAACGAAGCCTTAGTCCAGCTCGCAGACCTCAGGT  
 TTTTCAGGGTCCCTGTTCTCCACGGCTTCTGCTCCATCCTCTCAGGTTCAATCAGCGTGAGACTG  
 GAGGCTTTCTATCTCTAGCACACCAATTTGGTGTCTTCAATCTCCTAGTGAACCCCTGGAGCCCCAAAA  
 TGCAGACAAGATCAAGATCAAGATTGCAGACCTTGGCAACGCCTGCTGGGTGCACAAGCACTTCACTGAG  
 GATATTCAGACTCGGCAGTACAGGGCCGTGGAGGTGCTGATCGGTGCCGAGTATGGGCCCCAGCTGACA  
 TCTGGAGCACAGCATGCATGGCTTTTGAGCTGGCCACTGGTACTACCTATTTGAGCCCCACTCTGGAGA  
 AGACTACAGTCGTGATGAGGACCACATTGCTCATATCGTGAACCTTCTAGGAGACATCCCTCCAGCTTTT  
 GCCCTCTCAGGCCGATATTCACGGGAGTTCTTCAACCGTAGAGGAGAGCTGCGCCACATCCCCAACCTCA  
 AGCACTGGGGCCTATATGAGGTGCTCATGGAGAAGTATGAGTGGCCCTGGAGCAGGCCACACAGTTCAG  
 TGCCTTCTGTTGCCATGATGGAGTACATCCCTGAGAAGCGGGCCAGTCTGCCGACTGCCTCCAGCAT  
 CCTGGCTTAATCCA

**ACGCGT**ACGCGGCCGCTCGAGCAGAAACTCATCTCAGAAGAGGATCTGGCAGCAAATGATATCCTGGATT  
 ACAAGGATGACGACGATAAGGTTTAA

**Protein Sequence:**

>MR220564 protein sequence  
 Red=Cloning site Green=Tags(s)

MSANAGSGSVDCGSSSSSQTSCGPESSELTPATPAPRLLQGLLGSDDDEEQEDPKDYCKGGYYPVKI  
 GDLFNGRYHVVRKLGWGHFSTVWLCWDIQRKRFVALKVVKVKSAGHYTETAVDEIKLLKCVRSDSPDPKRE  
 TIVQLIDDFRISGVNGVHVMVLEVLGHQLLKIISNYQGLPVPVKSIVRQVLHGLDYLHTKCKIHT  
 DIKPENILLCVGDAYIRRLAAEAETWQQSGAQPSPSRSTVSTAPQEVLIKLSKNKRKMRKRKQKRL  
 EERLRDLQRLEAMEAAVQAEDSSRLERGSSTSSGCHPEGTRAGPSPASSPVPGGERSLSPSSQTS  
 FSGSLFSTASCSILSGSSNQRETGGLLSPSTPFGASNLLVNPLEPQNADKIKIKIADLGNACVWHKHFE  
 DIQTRQYRAVEVLIGAEYPPADIWSTACMAFELATGDYLFEPHSGEDYSRDEDHIAHIVELLGDIPPAF  
 ALSGRYSREFFNRRGELRHIPNLKHWGLYEVLMKEYEWPLEQATQFSAFLLPMEYIPEKRASAADCLQH  
 PWLNP

**TR**TRPLEQKLISEEDLAANDILDYKDDDDKV

**Restriction Sites:**

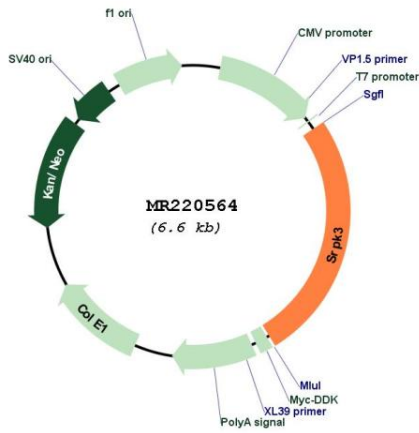
SgfI-MluI



**MW:** 62.4 kDa

**Gene Summary:** Serine/arginine-rich protein-specific kinase which specifically phosphorylates its substrates at serine residues located in regions rich in arginine/serine dipeptides, known as RS domains. Phosphorylates the SR splicing factor SRSF1 and the lamin-B receptor (LBR) in vitro. Required for normal muscle development.[UniProtKB/Swiss-Prot Function]

**Product images:**



Circular map for MR220564