

Product datasheet for **MR220544**

Rps2 (NM_008503) Mouse Tagged ORF Clone

Product data:

| | |
|---------------------------|---|
| Product Type: | Expression Plasmids |
| Product Name: | Rps2 (NM_008503) Mouse Tagged ORF Clone |
| Tag: | Myc-DDK |
| Symbol: | Rps2 |
| Synonyms: | Llrep3; S4 |
| Mammalian Cell Selection: | Neomycin |
| Vector: | pCMV6-Entry (PS100001) |
| E. coli Selection: | Kanamycin (25 ug/mL) |
| ORF Nucleotide Sequence: | >MR220544 representing NM_008503 Red=Cloning site Blue=ORF Green=Tags(s) |

TTTTGTAATACGACTCACTATAGGGCGGCCGGAATTCGTCGACTGGATCCGGTACCGAGGAGATCTGCCGCC**CGCATCGCC**

ATGGCGGATGACGCCGGTGCAGCGGGAGGGCCCGGAGGACCCGGGGGCCAGGATTAGGTGGCCGCGCGGCGTTCCGCGGAGGATTCGGCAGCGGTCTTAGGGGCCGTGGTCTGGCCGAGGCCGTGGCCGTGGTCGAGGCCGCGGGCTCGTGGAGGTAAGCTGAAGACAAGGAGTGGATCCCGTCACCAAGCTGGCCGTCTGGTTAAGGACATGAAGATCAAGTCCTTGGAGGAGATCTACCTGTTCTCCCTGCCATTAAGGAGTCTGAGATCATGATTTCTTCTGGGTGCGTCCCTAAAGGATGAGGTTCTGAAAATCATGCCAGTGCAGAAGCAGACTCGGGCTGGCCAGCGGACCAGGTTCAAGGCTTTCGTCGCTATTGGGGACTACAATGGTCACGTTGGTCTTGGTGTTAAGTGCTCCAAGGAGTTGCCACTGCCATCCGAGGGGCCATCATCTTGGCCAAGCTTCCATCGTCCCTGTGCGGAGAGGCTACTGGGGGAACAAGATTGGCAAGCCCCACACTGTTCCATGCAAGGTGACAGGCCGCTGTGGCTCTGTGCTGGTGCCTCATCCCTGCCCCAGAGGCACTGGCATTGTCTCTGCTCCTGTGCCAAGAAGCTCCTGATGATGGCCGGTATAGATGACTGCTACACTTCAGCCAGAGGCTGCACTGCCACCCTGGCAACTTTGCTAAGGCCACCTTTGATGCCATCTCCAAGACTTACAGCTACCTGACTCCCACCTCTGGAAAGAGACTGTCTTCAACAAGTCTCCTTATCAGGAATTCACGGATCATCTTGTGAAAACCCACACCAGAGTCTCTGTTACAGAGGCCAGGCTCCAGCTGTGGCTACCACA

ACGCGTACGCGGCCGCTCGAGCAGAAACTCATCTCAGAAGAGGATCTGGCAGCAAATGATATCCTGGATTACAAGGATGACGACGATAAGGTTTAA



[View online »](#)

Protein Sequence: >MR220544 representing NM_008503
 Red=Cloning site Green=Tags(s)

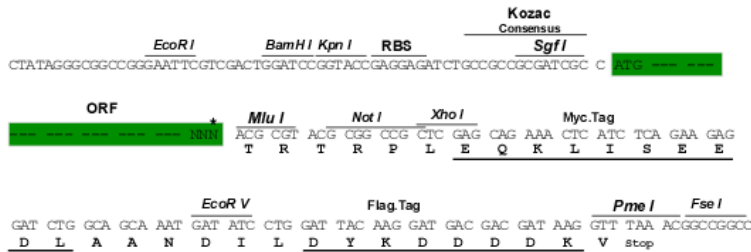
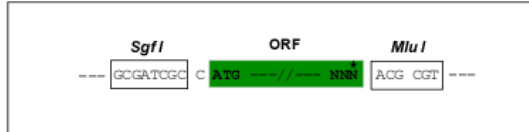
MADDAGAAGGPGGPGGPGGLGGRGGFRGGFGSGLRGRGRGRGRGRGRGARGGKAEDKEWIPVTKLGRVL
 KDMKIKSLEEIYLFSLPIKESIIDFFLGASLKDEVLKIIMPVQKQTRAGQRTFKAFVAIGDYNGHVGLG
 VKCSKEVATAIRGAIILAKLSIVPVRGGYWGNIKIGKPHVTPCKVTGRCGSVLVRILIPAPRGTGIVSAPVP
 KKLLMMAGIDDCYTSARGCTATLGNFAKATFDIAISKYSYLTPLWKETVFTKSPYQEFTHLVKTHTRV
 SVQRTQAPAVATT

TRTRPLEQKLISEEDLAANDILDYKDDDDKV

Restriction Sites: SgfI-MluI

Cloning Scheme:

Cloning sites used for ORF Shuttling:



* The last codon before the Stop codon of the ORF

ACCN: NM_008503

ORF Size: 879 bp

OTI Disclaimer: The molecular sequence of this clone aligns with the gene accession number as a point of reference only. However, individual transcript sequences of the same gene can differ through naturally occurring variations (e.g. polymorphisms), each with its own valid existence. This clone is substantially in agreement with the reference, but a complete review of all prevailing variants is recommended prior to use. [More info](#)

OTI Annotation: This clone was engineered to express the complete ORF with an expression tag. Expression varies depending on the nature of the gene.

Components: The ORF clone is ion-exchange column purified and shipped in a 2D barcoded Matrix tube containing 10ug of transfection-ready, dried plasmid DNA (reconstitute with 100 ul of water).

Reconstitution Method:

1. Centrifuge at 5,000xg for 5min.
2. Carefully open the tube and add 100ul of sterile water to dissolve the DNA.
3. Close the tube and incubate for 10 minutes at room temperature.
4. Briefly vortex the tube and then do a quick spin (less than 5000xg) to concentrate the liquid at the bottom.
5. Store the suspended plasmid at -20°C. The DNA is stable for at least one year from date of shipping when stored at -20°C.

RefSeq: [NM_008503.5](#), [NP_032529.2](#)

RefSeq Size: 1005 bp

RefSeq ORF: 882 bp

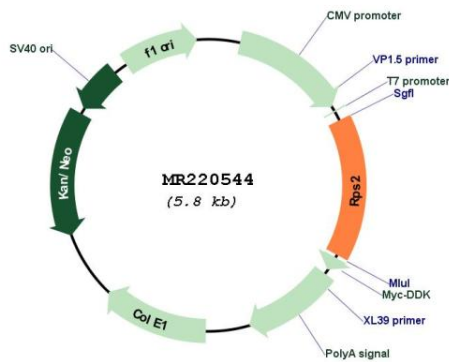
Locus ID: 16898

UniProt ID: [P25444](#)

Cytogenetics: 17 A3.3

MW: 31.7 kDa

Product images:



Circular map for MR220544