

Product datasheet for **MR220536**

Il1rapl2 (NM_030688) Mouse Tagged ORF Clone

Product data:

Product Type:	Expression Plasmids
Product Name:	Il1rapl2 (NM_030688) Mouse Tagged ORF Clone
Tag:	Myc-DDK
Symbol:	Il1rapl2
Mammalian Cell Selection:	Neomycin
Vector:	pCMV6-Entry (PS100001)
E. coli Selection:	Kanamycin (25 ug/mL)



[View online »](#)

ORF Nucleotide Sequence:

>MR220536 representing NM_030688
 Red=Cloning site Blue=ORF Green=Tags(s)

TTTTGTAATACGACTCACTATAGGGCGGCCGGAATTCGTCGACTGGATCCGGTACCGAGGAGATCTGCC
 GCC**CGCATCGCC**

ATGAAGCTGCCACTTCTTCTGGCCCTGGTGGTCTGTTCTGCAGTCAGTACAAATTTGAAGATGGTGTCAA
 AAAGAAATTCGTGGATGGCTGCATTGATTGGTCGGTGGATCTCAAGACATACATGGCTTTGGCAGGTGA
 ACCTGTCCGAGTGAAATGTGCCCTTTTCTACAGTTATATCCGCACCAACTACAGCATGGCCAGAGTACC
 GGGCTCAGGCTCATGTGGTATAGAAACAAAGGTGACTTGAAGAGCCCATCATCTTTTCAGAGGTCAGGA
 TGAGTAAAGAGGAAGACGCCATATGGTTTCACTCAGCTGAGGAACAAGACAGTGGATTCTACACTTGTGT
 TTTAAGAACTCCACATATTGCATGAAGGTGTCAATGTCCTTGACTGTTGCAGAGAATGAATCAGGCCTG
 TGCTACAATAGCAGGATCCGCTACTTAGAGAACTGAAGTTACAAAAGAAAGGAGATCTCATGCCAG
 ACATGGATGACTTTAAGAAGTCTGATCAGGAACCTGATGTCGTATGGTACAAGGAATGCAAGCCAAAAAT
 GTGGAGAAGCATAATAATACAGAAGGAAATGCTCTTCTCATCCAAGAAGTTCAAGAAGAAGATGGAGGA
 AATTATACATGTGAACCTAAATATGAAGGAAAATTTGTAAGACGAACAACAGAATTGAAAGTTACAGCTT
 TACTCACAGACAAGCCTCCCAAGCCATTGTTCCCATGGAAAATCAGCCAAGTGTATAGATGTCCAGCT
 GGGTAAACCTCTGAACATCCCTTGCAAAGCTTTCTTTGGATTCACTGGGGAGTCTGGACCAATGATCTAC
 TGGATGAAAGGCGAGAAGTTTATTGAAGAACTGGCAGGTCACATTAGAGAAGGTGAAATAAGGCTCCTCA
 AAGAGCATCTTGGAGAAAAAGAAGTTGAGTTGACACTTATCTTTGACTCAGTGGTAGAAGCTGACTTGGC
 TAATTATACCTGCCATGTGGAGAACAGAAATGGACGGAACACGCCAGTGTCTACTGCGAAAAAAGGAT
 TTAATATACAAAATTTAGCTTGCAGGGGGCCTAGGAGCAATCTTCTACTACTTATACTGCTACTGGTGG
 TCTACAAATGCTACAACATAGAAGTACTGCTTTTCTACAGACAGCGTTTTTGGAGGTGATGAAACTACTGA
 TGACAACAAGGAATATGATGCGTATCTCTTACACAAAAGTGGATCAAGATACTTTGGACTGTGACAAT
 ACTGAGGAAGAGCAGTTTGTCTTGAAATACTGCCAGATGTCTTAGAAAAACACTATGGATATAAATCT
 TCATCCCAGAAAGGGATCTCATTCCAAGTGAACATATATTGAAGATCTCACAAGATGTGTTGAGCAAAG
 CAGACGACTTATTATCGTGCTAACTCCAGACTATATTCTCAGACGGGGATGGAGTATTTTCGAACTGGAA
 AGCAGACTCCATAACATGCTAGTCAGTGGAGAAATCAAAGTATTTTGATTGAGTGTACAGAATAAAAG
 GGAAGGTGAATTGCCAGGAAGTGAATCACTAAAGCACAACTCAAACTTCTGTCACTGATCAAGTGGAA
 GGGACCCAAAAGCAGCAAATTAATTTCTAAGTTTTGGAAGCACTTAGTGTATGAAATGCCCATCAAGAAA
 AAAGAAATGCTATCCCACTGCCATGTTCTAGACTCTGCCGAGCAGGGCTTTTTTGGAGAAGTTCAGCCTA
 TACCTTCAATTGCCATGACGAGTACCTCAGCCACAATGGTGCCATCGCAAGCTGATCTCCCTGAGTTCCA
 TCATTCGGATTCAATGCAATGAGGCACTGTTGCAGAGGATACCAACACGAGATGCCAGCCAACACCCTG
 TCAGTACCCTCCTTAGGCAACCACCACACTTACTGTAAGTGGCACTGACACTACTCAATGGACAGCTAC
 CCCTTAACAACCTCTTAAAGAGACTGAGGAATTTTCAAGGAACAATCCCTACTGCCATTAACATCCAA
 AGAGCTTAGCTTCACCAGTGATATTTGG

ACGCGTACGCGGCCGCTCGAGCAGAACTCATCTCAGAAGAGGATCTGGCAGCAAATGATATCCTGGATT
 ACAAGGATGACGACGATAAGGTTTAA

Protein Sequence: >MR220536 representing NM_030688
 Red=Cloning site Green=Tags(s)

MKLPLLLALVVC SAVSTNLK MVS KRNSVDG CIDWSVDL KTYMALAGEPVRVKCALFYSYIRTNYSMAQST
 GLRLM WYRNKGDLE EPIIFSEVRMSKEEDA IWFHSAEEQDSGFYTCVLRNSTYCMKVSM SLTVAENESGL
 CYN SRIRYLEKSEVTKRKEISCPDMDDFKKS DQEPDVVWYKECKPKM WRSII IQGNALLIQEVQEEDGG
 NYTCELKYEGLVRR TTELKVTALLTDKPPKPLFPMENQPSVIDVQLGKPLNIPCKAFFGFGSGESGPMIY
 WMKGEKFIEELAGHIREGEIRLLKEHLGEKEVELTLIFDSVVEADLANYTCHVENRNGRKHASVLLRKKD
 LIYKIELAGGLGAIFLLLI LLLVYKYCNIELMLFYRQRFGGDETTDDNKEYDAYLSYTKVDQDTLDCDN
 TEEEQFALEILPDVLEKHYGYKLFIPERDLIPSGTYIEDLTRCVEQSRRLIIVLTPDYILRRGWSIFELE
 SRLHNMLVSGEIKVILIECTELKGVNCQEVESLKHNIKLLSLIKWKGPKSSKLN SKFWKHLVYEMPIKK
 KEMLSHCHVLDSAEQGLFGELQIPSIAMTSTSATMVPSQADLPEFHSDSMQMRHCCRQYHEMPANTL
 SVPSLGNHHTYCNLPL TLLNGQLPLNNSLKETE EFSRNNPLLP LTSKELSFTSDI W

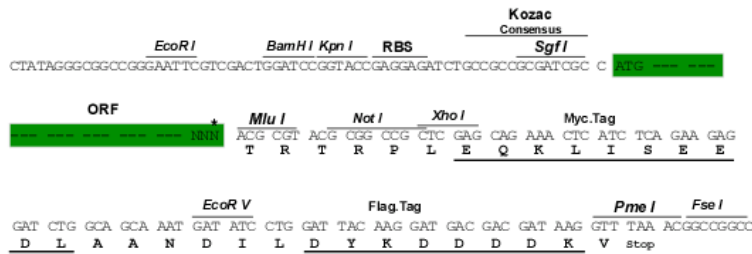
TRTRPLEQKLISEEDLAANDILDYKDDDDKV

Chromatograms: https://cdn.origene.com/chromatograms/mm9013_h01.zip

Restriction Sites: SgfI-MluI

Cloning Scheme:

Cloning sites used for ORF Shuttling:



* The last codon before the Stop codon of the ORF

ACCN: NM_030688

ORF Size: 2058 bp

OTI Disclaimer: Due to the inherent nature of this plasmid, standard methods to replicate additional amounts of DNA in E. coli are highly likely to result in mutations and/or rearrangements. Therefore, OriGene does not guarantee the capability to replicate this plasmid DNA. Additional amounts of DNA can be purchased from OriGene with batch-specific, full-sequence verification at a reduced cost. Please contact our customer care team at custsupport@origene.com or by calling 301.340.3188 option 3 for pricing and delivery.

The molecular sequence of this clone aligns with the gene accession number as a point of reference only. However, individual transcript sequences of the same gene can differ through naturally occurring variations (e.g. polymorphisms), each with its own valid existence. This clone is substantially in agreement with the reference, but a complete review of all prevailing variants is recommended prior to use. [More info](#)

OTI Annotation: This clone was engineered to express the complete ORF with an expression tag. Expression varies depending on the nature of the gene.

Components: The ORF clone is ion-exchange column purified and shipped in a 2D barcoded Matrix tube containing 10ug of transfection-ready, dried plasmid DNA (reconstitute with 100 ul of water).

Reconstitution Method:

1. Centrifuge at 5,000xg for 5min.
2. Carefully open the tube and add 100ul of sterile water to dissolve the DNA.
3. Close the tube and incubate for 10 minutes at room temperature.
4. Briefly vortex the tube and then do a quick spin (less than 5000xg) to concentrate the liquid at the bottom.
5. Store the suspended plasmid at -20°C. The DNA is stable for at least one year from date of shipping when stored at -20°C.

RefSeq: [NM_030688.2](#), [NP_109613.1](#)

RefSeq Size: 2518 bp

RefSeq ORF: 2061 bp

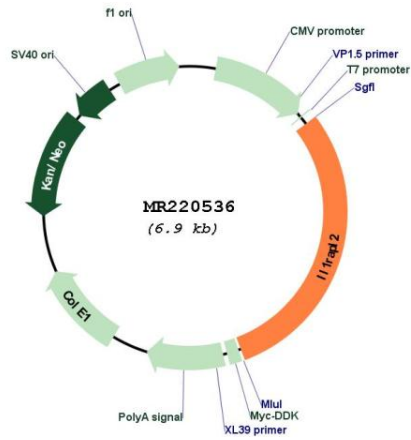
Locus ID: 60367

UniProt ID: [Q9ERS6](#)

Cytogenetics: X F1

MW: 79.2 kDa

Product images:



Circular map for MR220536