

## Product datasheet for MR220472

### Ap3b2 (NM\_021492) Mouse Tagged ORF Clone

#### Product data:

Product Type:	Expression Plasmids
Product Name:	Ap3b2 (NM_021492) Mouse Tagged ORF Clone
Tag:	Myc-DDK
Symbol:	Ap3b2
Synonyms:	A1549966; AU042881; beta-NAP; beta3B; Naptb; [b]-NAP
Mammalian Cell Selection:	Neomycin
Vector:	pCMV6-Entry (PS100001)
E. coli Selection:	Kanamycin (25 ug/mL)
ORF Nucleotide Sequence:	>MR220472 ORF sequence Red=Cloning site Blue=ORF Green=Tags(s)

TTTTGTAATACGACTCACTATAGGGCGCCGGGAATTCGTCGACTGGATCCGGTACCGAGGAGATCTGCC  
GCC**CGATCGCC**

ATGTCGGCCGCTCCGGCCTACAGCGAAGACAAGGGCGGCTCAGCCGGTCCCGGGGAGCCAGAATATGGCC  
ACGACCCGGCGAGCGCGGTATCTTCTCCTCGGACTACAAGCGGCATGATGACCTGAAAGAGATGTTGGA  
CACCAACAAGGACTCCCTCAAGCTGGAGGCCATGAAGAGGATTGTGGCAATGATCGCCCGGGAAAGAAT  
GCCTCGGACCTGTTCCCTGCAGTGGTGAAGAATGTGGCCTGTAAGAACATAGAGGTGAAGAAGCTTGTCT  
ACGTGTATCTGGTCCGATATGCCGAGGAGCAGCAAGACCTCGCTCTACTGTCCATCTCTACTTTCCAACG  
TGGCCTAAAGGATCCCAACCAGCTGATCCGTGCCAGTGCCTCCGGTTCCTCTAGCATCCGTGTGCC  
ATCATAGTGCCCATCATGATGCTAGCCATCAAGGAAGTGCCTCGGACATGTCACCCTACGTTCCGAAAA  
CAGCTGCTCATGCCATCCCCAACTCTACAGTTTGGACTCCGATCAGAAGGACCAGCTGATAGAAGTCAT  
TGAGAAGCTTTTGGCAGATAAGACCACGCTGGTGGCAGGCAGTGTAGTGATGGCCTTTGAAGAGGTATGT  
CCAGAACGTATTGACCTGATTCACAAAACTACCGAAGCTCTGCAACCTGCTCATTGATGTGGAGGAGT  
GGGGCCAGGTGGTGATTATCAGCATGCTCACGCGTTATGCGCGAACGCAATTCCTGAGCCCTACGCAGAA  
TGAGTCCTTGTGGAGGAGAATCCCGAGAAGGCCTTCTATGGCTCCGAGGAGGACGAGGCCAAAGGCCCT  
GGATCAGAGGAGGCAGCCACTGCGGCGCTGCCGCTCGGAAGCCCTATGTAATGGACCCAGATCACCGGC  
TGCTGCTGCGGAACCAAGCCCTGCTGCAGAGCCGACGCGCGGTGGTTCATGGCGGTGGCGCAGCT  
TTACTTCCACCTAGCGCCTAAGGCAGAGGTGGGCGTCAATCGCAAGGCGTGGTACGCTGCTGCGCAGC  
CACAGTGAGGTGACGTACGTAGTGTCCAGAACGTGGCCACCATGTCCATCAAGCGCAGGGGTATGTTTG  
AACCTACCTGAAGAGCTTCTACATTAGGTCCACGGATCCTACCCAGATCAAGATCCTGAAGCTGGAAGT  
GCTGACCAACCTGGCCAATGAGACTAACATCCCCTACTGTTCTCCGGGAATTCAGACCTACATTCGCAGC  
ATGGACAAAGACTTTGTGGCAGCCACGATCCAGGCCATTGGACGATGTGCAACGAACATAGGCCGAGTCC  
GTGACACCTGTCTCAATGGCTTGGTGCAGCTTCTGTCCAACCGTGACGAGCTTGTGGTTGCAGAGTCAGT  
GGTGGTACATTAAGAAGCTGCTGCAAATGCAGCCAGCGCAGCACGGTGAGATCATCAACACTTGGCAAAG



View online »

CTCACAGACAACATCCAGGTGCCATGGCACGAGCCAGCATCCTCTGGCTCATTGGAGAGTACTGTGAGC  
 ATGTCCCCAAGATCGCACCTGATGTCCTGAGAAAAATGGCCAAGTCTTCACAGCAGAGGAGGACATCGT  
 GAAGCTGCAGGTCATCAACCTGGCAGCCAAGCTGTACCTGACTAACTCAAAGCAGACCAAGCTCTTGACC  
 CAGTATGTGCTGAGTCTGGCCAAGTACGACCAGAACTATGATATCCGGGATCGAGCCCGCTTACCCGGC  
 AGCTCATTGTTCCCTCTGAGCAGGGTGGTGCCTCAGTCGCCATGCCAAGAACTCTTCTGGCCCTAA  
 GCCAGCCCCTATCTTGGAGTATCCTTCAAAGATCGTGACCATTCCAGCTGGGCTCACTGTACACCTG  
 CCAATGTGAGGTACCTGAATGGACCAATGTTCAAATCGGGAGAAGAGGAAGGAGAAGAAAAGCCTTT  
 CTATTCTGACTCCGAGGGGAGTCTGGCCCCACTGAGTCTGCAGACAGCGAGCCTGAATCTGAGAGTGAG  
 TCAGAGAGTAAGAGCAGCAGTGGGAGTGGTCCGGGGAGTCTAGCAGTGAGTCGGACAATGAAGAAGAGG  
 ATGAGGAGAAAGGCGGAGGCAGCGAGAGTGAACAGAGTGAAGGAGGAAGATGAGAAGAAGAAGAAGACAAA  
 GAAGAAGAAGGCATCAGAGGGACACAGAGAAGGCTCATCATCAGAAGAGGGCAGTGACTCCAGCAGCAGC  
 TCAGAGTCTGAGGTGACGTCAGAGTCGGAGGAGGAACAGGTGGAACCTGCCTCTGGAGGAAGAAAACGC  
 CTCAGGCAGCAAGAGTGCCCTGTAGCCAAGGAGATTCCCTGCTGGACCTAGAGGATTCACCCCTCC  
 TAGTGTCCAGCCTGTGTCTCTCCCATGTTGTGTCTACCAGTCTGGCTGCTGACCTGGAAGGGCTGACA  
 CTCACAGACTCCTCTCTGGTGCCTTCGCTGCTGAGTCCAGTGTCCAGCATTGGGAGGCAGGAGTCTGTC  
 ACCGGGTAGCTGGAGAGGGGCTGTCTGTGGACTATGCCTTCAGCCGCCAGCCTTTCTCTGGGGATCCCCA  
 CATGGTGTCTCTGCATATCTACTTCTCCAACAACCTCGGAGACTCCCATCAAGGGGCTGCATGTGGGCACT  
 CCCAAGCTGCCTGCTGGCATCAGCATTCAAGAAATCCCTGAAATCGAGTCCCTGGCACCTGGAGAATCCA  
 CCACTACTGTGATGGGCATTAACCTCTGCGACTCAACCCAGGCAGCCAACCTCCAGCTGTGCACCCAAAC  
 CCGACAGTTCTATGTCTCCATTCAGCCACCTGTCCGGGAGCTGATGGCCCTGTATTTATGAGTGAGAAT  
 GAGTTCAAGAAGAACAGGGAAGCTGACAGGCATGAATGAGATCACAGAGAAGCTTACATTGCCAGACA  
 CCTGTCAAGTATCACATGGTGGTGCAGAAAGTACTGCCACCCCAACCTAGTCTGTCCATGTGG  
 GACACTGTAGTACAGGTTTGCAGGGAGGACATTAACCTAGTGGGAGTCTGGTCTGCTGACTCTGGAT  
 GCCCGGCAGCTGGAGCCGCCAGCTGACCGTCAACAGTGAGAAGATGGTGATTGGCACCATGCTGGTGA  
 AGGATGTATTACAGGCTCTGACCCAG

AGCGGACCGACGCGTACGCGGCCGCTCGAGCAGAACTCATCTCAGAAGAGGATCTGGCAGCAAATGATATCC  
 TGGATTACAAGGATGACGACGATAAGGTTTAA

**Protein Sequence:**

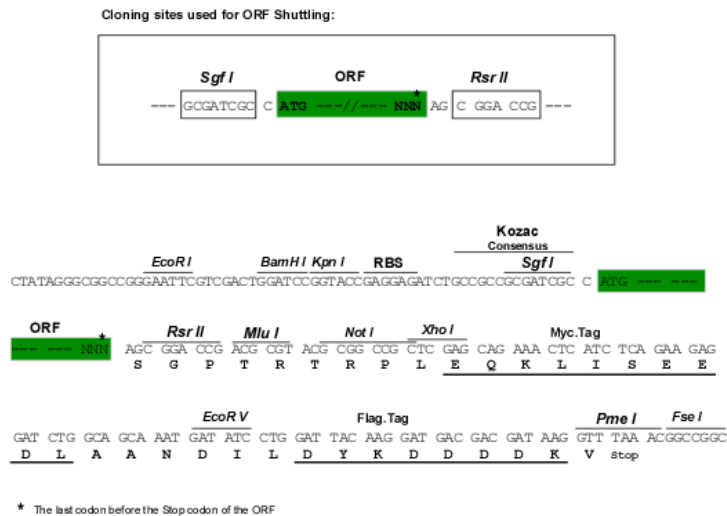
>MR220472 protein sequence  
 Red=Cloning site Green=Tags(s)

MSAAPAYSEDKGGSAGPGEPEYGHDPASGGIFSSDYKRHDDLKEMLDTNKDSLKLEAMKRIVAMIARGKN  
 ASDLFPVAVKNVACKNIEVKKLYVYVLYRYAEEQQDLALLSISTFQRGLKDPNQLIRASALRVLSSIRVP  
 IIVPIMMLAIKEAASDMSPYVRKTAHAIPKLYSLDSDQKQDLIEVIEKLLADKTTLVAGSVVMAFEFVC  
 PERIDLTHKNYRKLNNLLIDVEEWQVVIISMLTRYARTQFLSPTQNESLLEENPEKAFYGESEDEAKGP  
 GSEEAATAALPARKPYVMDPDHRLLLRNTKPLLQSRSAVVMAVAQLYFHLAPKAEVGVIAKALVRLRS  
 HSEVQYVVLQNVATMSIKRRGMFEPYLSFYIRSTDPTQIKILKLEVLNLANETNIPTVREFQTYIRS  
 MDKDFVAATIQAIGRCATNIGRVRTCLNGLVQLLSNRDELVVAESVVVYIKLLQMQPAQHGEI IKHLAK  
 L TDNIQVPMARASILWLIGEYCEHVPKIAPDVL RKMASF TAEEDIVKLQVINLAAKLYLTNSKQTKLLT  
 QYVLSLAKYDQNYDIRDRARFTRQLIIPSEQGGALSRHAKKFLAPKPAPILESSFKDRDHFQLGSLSHL  
 LNAKATGYQELPDWPEEAPDPSVRNVEVPEWTKCSNREKRKEKEKPFYSDSEGESGPTESADSEPESESE  
 SESKSSSGSGSGESSSESDNEEEDKGGGSESEQSEEEDEKKKKTKKKKASEGHREGSSSEEGSDSSSS  
 SESEVTSESEEEQVEPASWRKKTTPPGSKSAPVAKEISLLDLEDFTPPSVQPVSPPMVVSTSLAADLEGLT  
 LTDSSLVPSLLSPVSSIGRQELLHRVAGEGLSVDYAFSRQPFSGDPHMVSLHIYFSNNSETPIKGLHVGT  
 PKLPAGISIQEFPEIESLAPGESTTTVMGINFCDSTQAANFQLCTQTRQFYVSIQPPVGLMAPVFMSEN  
 EFKKEQKLTGMNEITEKLTLPDTCRSDHMVVQKVTATANLGRVPCGTSDEYRFAGRRTL TSGSLVLLTLD  
 ARAAGAAQLTVNSEKMGVIGTMLVKDVIQALTQ

SGPTRTRPLEQKLI SEEDLAANDILDYKDDDDKV

**Restriction Sites:**

SgfI-RsrII

**Cloning Scheme:**


**ACCN:** NM\_021492

**ORF Size:** 3249 bp

**OTI Disclaimer:** The molecular sequence of this clone aligns with the gene accession number as a point of reference only. However, individual transcript sequences of the same gene can differ through naturally occurring variations (e.g. polymorphisms), each with its own valid existence. This clone is substantially in agreement with the reference, but a complete review of all prevailing variants is recommended prior to use. [More info](#)

**OTI Annotation:** This clone was engineered to express the complete ORF with an expression tag. Expression varies depending on the nature of the gene.

**Components:** The ORF clone is ion-exchange column purified and shipped in a 2D barcoded Matrix tube containing 10ug of transfection-ready, dried plasmid DNA (reconstitute with 100 ul of water).

- Reconstitution Method:**
1. Centrifuge at 5,000xg for 5min.
  2. Carefully open the tube and add 100ul of sterile water to dissolve the DNA.
  3. Close the tube and incubate for 10 minutes at room temperature.
  4. Briefly vortex the tube and then do a quick spin (less than 5000xg) to concentrate the liquid at the bottom.
  5. Store the suspended plasmid at -20°C. The DNA is stable for at least one year from date of shipping when stored at -20°C.

**RefSeq:** [NM\\_021492.3](#), [NP\\_067467.2](#)

**RefSeq Size:** 3816 bp

**RefSeq ORF:** 3249 bp

**Locus ID:** 11775

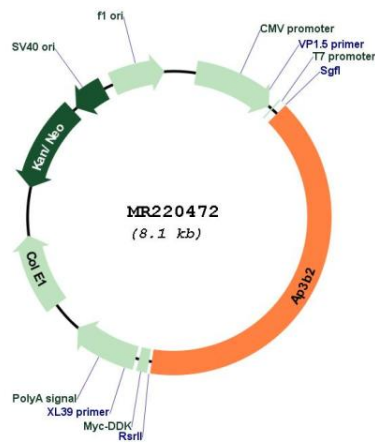
**UniProt ID:** [Q9JME5](#)

**Cytogenetics:** 7 45.71 cM

**MW:** 119.2 kDa

**Gene Summary:** Subunit of non-clathrin- and clathrin-associated adaptor protein complex 3 (AP-3) that plays a role in protein sorting in the late-Golgi/trans-Golgi network (TGN) and/or endosomes. The AP complexes mediate both the recruitment of clathrin to membranes and the recognition of sorting signals within the cytosolic tails of transmembrane cargo molecules. AP-3 appears to be involved in the sorting of a subset of transmembrane proteins targeted to lysosomes and lysosome-related organelles. In concert with the BLOC-1 complex, AP-3 is required to target cargos into vesicles assembled at cell bodies for delivery into neurites and nerve terminals. [UniProtKB/Swiss-Prot Function]

**Product images:**



Circular map for MR220472