

Product datasheet for MR220430

Clec12b (NM_027709) Mouse Tagged ORF Clone

Product data:

Product Type: Expression Plasmids
Product Name: Clec12b (NM_027709) Mouse Tagged ORF Clone
Tag: Myc-DDK
Symbol: Clec12b
Synonyms: 4933425B16Rik
Mammalian Cell Selection: Neomycin
Vector: pCMV6-Entry (PS100001)
E. coli Selection: Kanamycin (25 ug/mL)
ORF Nucleotide Sequence: >MR220430 representing NM_027709
 Red=Cloning site Blue=ORF Green=Tags(s)

TTTTGTAATACGACTCACTATAGGGCGCCGGGAATTCGTCGACTGGATCCGGTACCGAGGAGATCTGCC
 GCC**CGATCGCC**

ATGTCTGATGAAGTGACCTATGCGACACTGATGCTTCAGGACTCTGCAAGAGTGAGGGGAATCGGGATG
 GAAATAACCTAAGAAAAGAAGGACACCCAGCTCAATCCTCACTTTGGCGAGGCGCTGCCTTGAGTTTGT
 GACCCCTGTTTGGTGCTGGTAACAGGACTGGTGACCTTGGCAACTATGTTTTGCAGGTGTCTAATGAC
 ATTAACCTGATTCAGAGAAGTTGAGTCAGCTTCAGAAAAGCATCCATCCACAGCAGGACAATCTGTCTG
 AATCACTGAACAGCTCCAGAAAGAGTCTGACGGAGGAGTCTCTCCAGTCCAGATCTCTGCCCTACTGGA
 GAGGCAGGAGCAGATGGCTACCAAAGTCTGCAAGGAATTCCTCATCCACGCTTCTGACCATAAATGCAAC
 CCTTGTCCTCAAGACATGGCAATGGTATGGAAAACAGTTGCTACTATTTCTCAATCAATGAAGAGAAATCCT
 GGAGTGATAGCAGAAAGGACTGTATAGACAAGAAATGCCACTCTGGTGAAGATTGACAGCACCGAAGAAAAG
 GGATCTCCTTCAGTCACAGCTGTCCCTCACATTTCTTTCTTTTGGCTGGGATTGTCTGGAACTCATCT
 GGCAGAAACTGGCTGTGGGAGGATGGTTCATCCCCCTCCAACCCTGCTTAGTGACAAGGAGCTTGCGA
 GTTTCAATGGATCCAGAGAGTGTGCTTATTTTGAAGAGGGAATTTTACACTTCTCGTGTCTGCTGCTGA
 AATCCCTTGGATTTGTGAGAAGAGAGCCCTCCCTGGTGAAGATTGAAGATTTGGAT

ACGCGTACGCGGCCGCTCGAGCAGAAACTCATCTCAGAAGAGGATCTGGCAGCAAATGATATCCTGGATT
 ACAAGGATGACGACGATAAGGTTTAA



[View online »](#)

Protein Sequence: >MR220430 representing NM_027709
 Red=Cloning site Green=Tags(s)

MSDEVTYATLMLQDSARVGRNDRGNLNRKEGHPAQSSLWRGAALSLMTLCLVLVTGLVTLATMFLQVNSD
 INSDSEKLSQLQKSIHPQQDNLSESLNSSRKSLEESLQSQISALLERQEQMATKCKEFLIHASDHKCN
 PCPKTWQWYGNSCYFFSINEEKWSDSRKDCIDKNATLVKIDSTEERDLLQSQLSLTFSFFWLGLSWNSS
 GRNWLWEDGSFPPPTLLSDKELASFNRSRECAFERGNIYTSRCRAEIPWICEKRASLVKIEDLD

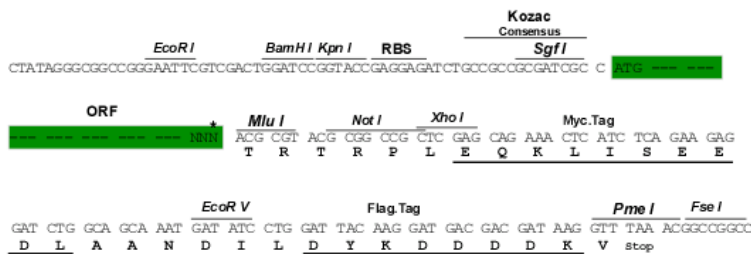
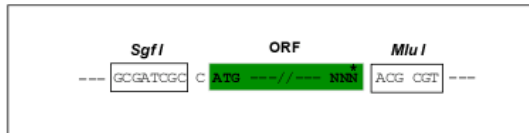
TRTRPLEQKLISEEDLAANDILDYKDDDDKV

Chromatograms: https://cdn.origene.com/chromatograms/mm9024_a11.zip

Restriction Sites: SgfI-MluI

Cloning Scheme:

Cloning sites used for ORF Shuttling:



* The last codon before the Stop codon of the ORF

ACCN: NM_027709

ORF Size: 825 bp

OTI Disclaimer: The molecular sequence of this clone aligns with the gene accession number as a point of reference only. However, individual transcript sequences of the same gene can differ through naturally occurring variations (e.g. polymorphisms), each with its own valid existence. This clone is substantially in agreement with the reference, but a complete review of all prevailing variants is recommended prior to use. [More info](#)

OTI Annotation: This clone was engineered to express the complete ORF with an expression tag. Expression varies depending on the nature of the gene.

Components: The ORF clone is ion-exchange column purified and shipped in a 2D barcoded Matrix tube containing 10ug of transfection-ready, dried plasmid DNA (reconstitute with 100 ul of water).

Reconstitution Method:

1. Centrifuge at 5,000xg for 5min.
2. Carefully open the tube and add 100ul of sterile water to dissolve the DNA.
3. Close the tube and incubate for 10 minutes at room temperature.
4. Briefly vortex the tube and then do a quick spin (less than 5000xg) to concentrate the liquid at the bottom.
5. Store the suspended plasmid at -20°C. The DNA is stable for at least one year from date of shipping when stored at -20°C.

RefSeq: [NM_027709.2](#), [NP_081985.1](#)

RefSeq Size: 1521 bp

RefSeq ORF: 828 bp

Locus ID: 71183

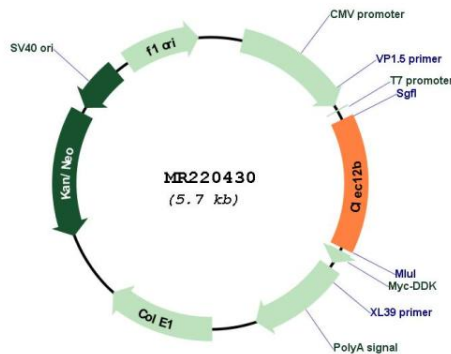
UniProt ID: [Q149M0](#)

Cytogenetics: 6 F3

MW: 31.8 kDa

Gene Summary: Cell surface receptor that protects target cells against natural killer cell-mediated lysis. Modulates signaling cascades and mediates tyrosine phosphorylation of target MAP kinases (By similarity).[UniProtKB/Swiss-Prot Function]

Product images:



Circular map for MR220430