

Product datasheet for MR220361

Nipal3 (NM_028995) Mouse Tagged ORF Clone

Product data:

Product Type: Expression Plasmids
Product Name: Nipal3 (NM_028995) Mouse Tagged ORF Clone
Tag: Myc-DDK
Symbol: Nipal3
Synonyms: 9130020G22Rik; AI480660; Npal3
Mammalian Cell Selection: Neomycin
Vector: pCMV6-Entry (PS100001)
E. coli Selection: Kanamycin (25 ug/mL)
ORF Nucleotide Sequence: >MR220361 representing NM_028995
 Red=Cloning site Blue=ORF Green=Tags(s)

TTTTGTAATACGACTCACTATAGGGCGGCCGGAATTCGTCGACTGGATCCGGTACCGAGGAGATCTGCC
 GCC**CGATCGCC**

ATGGACGGAGCCACAGTGCAGGTCTGCAGCTGCAGCCACTCCCACCCACCAGCGGCCACCTCCACGA
 GCCTGAGCAGCAGCGAGGGCTCCTTCTCCTACAAGGAAAATTGATCGGAGCACTTTGGCCATTTTTGG
 GCACCTGGTGGTCAGCATTGCCCTAACCTGCAGAAATACTGCCACATCCGCCTAGCAGGCTCCAAGGAC
 CCACGGGCTACTTCAAGACCAAGACATGGTGGCTGGGGCTGCTCCTGCTGCTACTGGGGAACTGGGCG
 TGTTTCGCCTCCTACGCCCTTGTCCACTGTCGCTCATCGTGCCCTCAGTGCCGTCTCCGTGATAGCAAG
 CGCCATCATCGGAATCATATTCATCAAGGAAAAATGGAAACCTAAGGACTTTGTGAGACGCTATGTCTTG
 TCCCTTTGTTGGCTGCGGCTTGGCCATCGTGGGCACCTACCTGCTAGTGACATTTGACCCAAACAGTCATG
 AGAAGATGACAGGCGAGAATCGCCAGGCACCTTGTGAGCTGGCCGTTTCTCCTGTACATGCTGGTGGC
 GATCGTCTGTTCTGCCTGCTGCTACTTCTACAAGGAGAGGAACGCCAACAGCATCGTTGTGATTCTC
 CTCCTGGTGGCCCTGCTTGGTCCATGACAGTGGTGACGGTCAAGGCCGTGTCAGGGATGCTGGTGTGT
 CCATCCAAGGCAACCTGCAGCTGGACTACCCATCTTCTACGTGATGTTTGTGTGCATGGTGGCCACCGC
 CATCTATCAGGCCACGTTTCTGAGTGAAGCCTCCAGATCTATGACTCCTCCTTGATTGCCAGCGTTGGC
 TACATCCTGTCCACAACAGCGGCCATCACAGCAGGTGCGATCTTCTACCTGGACTCCTTGGGGAGGAAG
 CTCTGCACATCTGTATGTTTGCAGTGGGTGCCTCATCGCCTTCTTGGGGTGTTCCTAATCACTCGAAA
 CAGAAAGAAGGCCATTCCGTTTCGAGCCCTATATTTCCATGGACGCCATGCCAGGTATGCAGGACATGCAT
 GCCAAAGGACAACGGTCCAGCCTGACCTCAAAGCTTCTTTTTCTACGGAGCCTTGAAAGCAACGACA
 GCATTTCTGAGCTCTACACCCGGCCACTGCCCGTCATGCAGGAGGAGCACAGCTCCAGGAGCACCCC
 TGGGGTCCCTACCGCTCCTGGAGCACACCAAGAAGGAA

ACGCGTACGCGGCCGCTCGAGCAGAAACTCATCTCAGAAGAGGATCTGGCAGCAAATGATATCCTGGATT
 ACAAGGATGACGACGATAAGGTTTAA



[View online »](#)

Protein Sequence: >MR220361 representing NM_028995
Red=Cloning site Green=Tags(s)

MDGAHSAGLQLQPLPPTSGATSTLSSSEGSFSYKENLIGALLAIFGHLVVSIALNLQKYCHIRLAGSKD
 PRAYFKTKTWLGLLLLLLGGELGVFASYAFAPLSLIVPLSAVSVIASAIIIGIIFIKEKWKPKDFVRRYVL
 SFVGCGLAIVGTYLLVTFAPNSHEKMTGENIARHLVSWPFLLYMLVAIVLFCLLLYFYKERNANSIVVIL
 LLVALLGSMTVVTVKAVSGMLVLSIQGNLQLDYPIFYVMFVCMVATAIYQATFLSEASQIYDSSLIASVG
 YILSTTAITAGAIIFYLDFLGEEALHICMFALGCLIAFLGVFLITRNRKKAIPFEPYISMDAMPGMQDMH
 AKGTTVQPDLKASFSYGALESNDSISELYTPATLPVMQEEHSSRSTPGVPYRVLEHTKKE

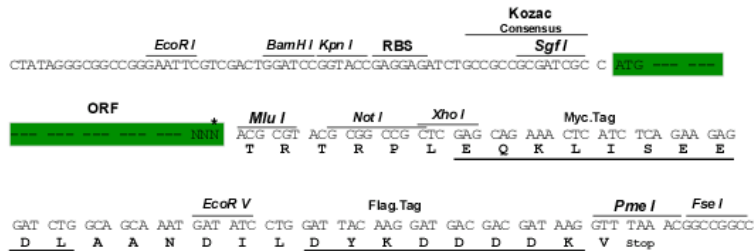
TRTRPLEQKLISEEDLAANDILDYKDDDDKV

Chromatograms: https://cdn.origene.com/chromatograms/mm9018_d08.zip

Restriction Sites: SgfI-MluI

Cloning Scheme:

Cloning sites used for ORF Shuttling:



* The last codon before the Stop codon of the ORF

ACCN: NM_028995

ORF Size: 1230 bp

OTI Disclaimer: The molecular sequence of this clone aligns with the gene accession number as a point of reference only. However, individual transcript sequences of the same gene can differ through naturally occurring variations (e.g. polymorphisms), each with its own valid existence. This clone is substantially in agreement with the reference, but a complete review of all prevailing variants is recommended prior to use. [More info](#)

OTI Annotation: This clone was engineered to express the complete ORF with an expression tag. Expression varies depending on the nature of the gene.

Components: The ORF clone is ion-exchange column purified and shipped in a 2D barcoded Matrix tube containing 10ug of transfection-ready, dried plasmid DNA (reconstitute with 100 ul of water).

Reconstitution Method:

1. Centrifuge at 5,000xg for 5min.
2. Carefully open the tube and add 100ul of sterile water to dissolve the DNA.
3. Close the tube and incubate for 10 minutes at room temperature.
4. Briefly vortex the tube and then do a quick spin (less than 5000xg) to concentrate the liquid at the bottom.
5. Store the suspended plasmid at -20°C. The DNA is stable for at least one year from date of shipping when stored at -20°C.

RefSeq: [NM_028995.4](#)

RefSeq Size: 5025 bp

RefSeq ORF: 1233 bp

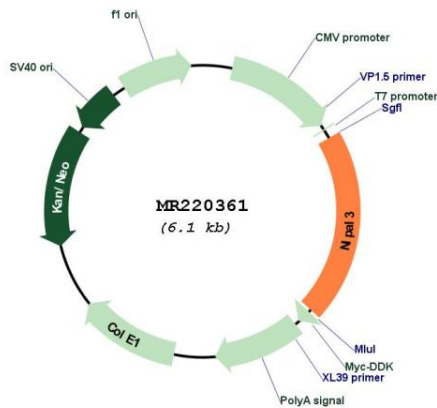
Locus ID: 74552

UniProt ID: [Q8BGN5](#)

Cytogenetics: 4 D3

MW: 45.3 kDa

Product images:



Circular map for MR220361