

## Product datasheet for **MR220298**

### **Best3 (NM\_001007583) Mouse Tagged ORF Clone**

#### **Product data:**

Product Type:	Expression Plasmids
Product Name:	Best3 (NM_001007583) Mouse Tagged ORF Clone
Tag:	Myc-DDK
Symbol:	Best3
Synonyms:	mBest4; Vmd2l3
Mammalian Cell Selection:	Neomycin
Vector:	pCMV6-Entry (PS100001)
E. coli Selection:	Kanamycin (25 ug/mL)



[View online »](#)

**ORF Nucleotide  
Sequence:**

>MR220298 representing NM\_001007583  
 Red=Cloning site Blue=ORF Green=Tags(s)

TTTTGTAATACGACTCACTATAGGGCGGCCGGAATTCGTCGACTGGATCCGGTACCGAGGAGATCTGCC  
 GCC**CGCATCGCC**

ATGACTGTCACCTACTCCAGTAAAGTAGCAAATGCAACATTTTTGGATTTCATAGTTGCTTCTCAAGT  
 GGAGAGGTAGTATCTACAAGCTGCTGTACAGGGAATTTATTGTTTTGCTGTTCTTTACACAGCAATCAG  
 TCTGGTGTACAGATTGTTACTTACAGGAGCCAAAAACGTTACTTTGAAAAATTATCAATTTACTGTGAC  
 AGATATGCTGAACAAATCCAGTAACTTTGTGCTTGGGTTTTACGTCACCTCTGGTAGTGAACCGATGGT  
 GGAACCGATTTGTGAATCTGCCTTGGCCAGACAGGCTGATGCTCCTCATTCCAGCAGTGTCCACGGGAG  
 CGACCAGCATGGGCGCTGCTCAGAAGGACGCTGATGCGCTACGTC AACCTGACGTCCTGCTCATCTTC  
 CGCTCGGTGAGCACC GCGGTGTACAAGAGGTTTCCACCATGGACCAGTGGTGAAGCAGGTTTTATGA  
 CGGCAGATGAGAGGAAATATTCGACCACCTCAAATCGCCTCATCTGAAGTACTGGGTTCCCTTCATTTG  
 GTTTGAAATCTTGCAACCAAAGCCCGAATGAAGGCAGAATCAGAGACAGCGTTGATCTACAATCACTG  
 ATGACTGAAATGAATCGGTACCGCTCTTGGTGCAGCCTCTATTGGTTACGACTGGGTTGGCATTCCGC  
 TGGTTTACACACAGGTCGTCACCCTCGCGTCTACACGTTCTTCTTTGCTGTCCTGATCGGAAGGAGTT  
 CCTGGATCCCACCAAAGGCTACGTAGGACATGACTTGGATCTGTACGTTCCCATCTTCACTCTCCTCCAG  
 TTCTTCTTCTACGCAGGATGGCTCAAGGTTGCAGAGCAGCTGATCAACCTTTTCGGGGAAGATGACGATG  
 ACTTTGAAACAACTGGTGCATTGACAGAACTGCAGGCTCTCTCTTTGGCTGTGGATGAAATGCATAT  
 GAGTTTGCCCAAGATGAAGAAGGACATTTACTGGGACGATTCTGCTGCCCGCCACCGTACACACTGGCG  
 GCTGCCGACTACTGCATACCGTCTTTCTGGGCTCAACGATCAAATGGGGCTGTCCGGTCCAACCTCC  
 CCGCAGAGGACTGGCTGTGGAACACTACGAGAAACACGAAACCGGCACTCAGTGATGAGGAGGGTCAAGCG  
 CTTCTGAGTACCCACGAGCATCCTGGCAGCCCCAGGAGGAGGAGGAGTTTCGGCAGGCAGGCCAGCGAC  
 AGCTCCATGTTCTTACCCCAAGCCAGCTCGGGATCTGCTGGATGTGCCGTCCAGGAACCCCAACCGAG  
 GCTCGCCACACGGAAGCAATCCCGCTCCCAAGAGGGCAGCCCCAAGCTGCACTCCAGCATGGGAGAACT  
 GTCCACCATCAGGGAGACCAGCCGTACCAGCACGCTGCAGAGCCTGAGCCCGCAGTCCAGCGTGAGGTCC  
 TCCCTACCAAAATGCCCGAGTCCCTGAGGTCTAATCACCGCCGCTGAAGCACCAGCGTTCTCAGCAG  
 ACAGCCATCAGCATGACTCCACTACCTCCATCTTGAGCCTCGAGTTCACCGGGTGCAGCCGAGCGGGAC  
 TGAGCAGCAGGTAGAGCCTT CAGGGACCCACCTGGAGACCCCAATCCCCAGACTACTTCAGCCAGTACT  
 GAAAGAGACTTGTCAAGTTCGAGGAAGATCTAGAGGATGACAGATTTCCAAAAGGTGGAGCCTGCCAG  
 AGTTTCTGGAGTCCAGGCACACCTCGCTGGGAACTTAGGTCCAGATCCTGTGAGTCCCCGGGATGCTCT  
 TCTTTTACCTGACACAGAAACACCTCAGAGACCAACGGAATCCATCCTGGGGCTGGCTCTGCCCTCGCC  
 CCCGACATCCTGTACTTAATGGAAGTTTGATAAGGAAACAGACATCTTGGAGTTTAACAACGAGCACA  
 CTGGAGAATCCCCGAAGGGAACACCACAGCGCCCCAGGACCTGGTTC

**ACGCGT**ACGCGGGCCGCTCGAGCAGAACTCATCTCAGAAGAGGATCTGGCAGCAAATGATATCCTGGATT  
 ACAAGGATGACGACGATAAGGTTTAA

**Protein Sequence:** >MR220298 representing NM\_001007583  
Red=Cloning site Green=Tags(s)

```

MTVTYSSKVANATFFGFHRLLLKWRGSIYKLLYREFIVFAVLYTAISLVYRLLLGAQKRYFEKLSIYCD
RYAEQIPVTFVLGFYVTLVVNRWVNQFVNLWPDRLMLLISSSVHGSDQHGRLLRRLMRYVNLTSLLIF
RSVSTAVYKRFPMTMDHVVEAGFMTADERKLFHDHLKSPHLKYWVPFIWFGNLATKARNEGRIRDSVDLQSL
MTEMNRYRSWCSSLFGYDWWGIPLVYTQVVTLAVYTTFFACLIQRQFLDPTKGYVGHDLDLVYPIFTLLQ
FFFYAGWLKVAEQLINPFGEDDDDFETNWCIDRNLQVSL LAVDEMHMSLPKMKKDIYWDDSAARPPYTLA
AADYCIPSF LGSTIQMGLSGSNFPAEDWLWNYEKHGHRHSVMRRVKRFLSTHEHPGSPRRRSFGRQASD
SSMFLPPSPARDLLDVPSRNPGRGSPTRKQSRSEQSGPKLHSSMGELSTIRETSRTLQSLSPQSSVRS
SPTKMPQVPEVLI TAAEAPAFSADSHQHDSTTSL SLEFTGVQPSGTEQQVEPSGTPPGDPNPQTTSAST
ERDLKFEEDEDDRFPKRWSLPEFLESRHTSLGNLGPDPVSPRDALLLPDETETPSETNGIHPGAGSALA
PDILYLMESLDKETDILEFNNEHTGESPKGTPQRPRTW
    
```

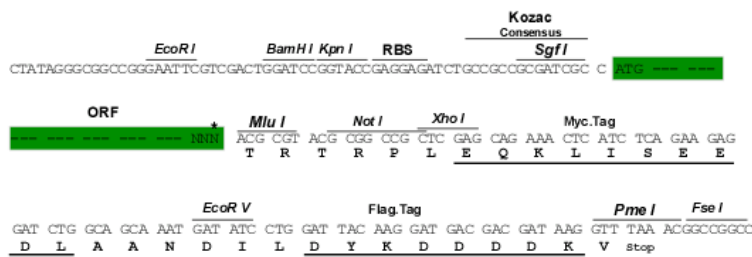
TRTRPLEQKLISEEDLAANDILDYKDDDDKV

**Chromatograms:** [https://cdn.origene.com/chromatograms/mm9004\\_h05.zip](https://cdn.origene.com/chromatograms/mm9004_h05.zip)

**Restriction Sites:** SgfI-MluI

**Cloning Scheme:**

Cloning sites used for ORF Shuttling:



\* The last codon before the Stop codon of the ORF

**ACCN:** NM\_001007583

**ORF Size:** 2007 bp

**OTI Disclaimer:** The molecular sequence of this clone aligns with the gene accession number as a point of reference only. However, individual transcript sequences of the same gene can differ through naturally occurring variations (e.g. polymorphisms), each with its own valid existence. This clone is substantially in agreement with the reference, but a complete review of all prevailing variants is recommended prior to use. [More info](#)

**OTI Annotation:** This clone was engineered to express the complete ORF with an expression tag. Expression varies depending on the nature of the gene.

**Components:** The ORF clone is ion-exchange column purified and shipped in a 2D barcoded Matrix tube containing 10ug of transfection-ready, dried plasmid DNA (reconstitute with 100 ul of water).

**Reconstitution Method:**

1. Centrifuge at 5,000xg for 5min.
2. Carefully open the tube and add 100ul of sterile water to dissolve the DNA.
3. Close the tube and incubate for 10 minutes at room temperature.
4. Briefly vortex the tube and then do a quick spin (less than 5000xg) to concentrate the liquid at the bottom.
5. Store the suspended plasmid at -20°C. The DNA is stable for at least one year from date of shipping when stored at -20°C.

**RefSeq:** [NM\\_001007583.1](#), [NP\\_001007584.1](#)

**RefSeq Size:** 2719 bp

**RefSeq ORF:** 2010 bp

**Locus ID:** 382427

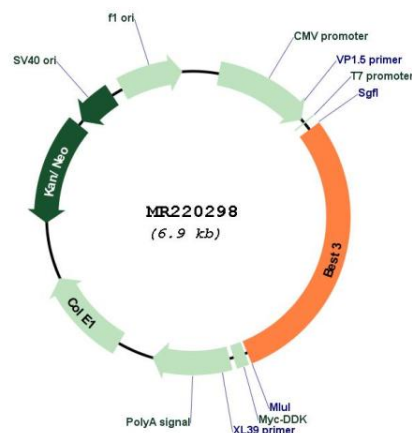
**UniProt ID:** [Q6H1V1](#)

**Cytogenetics:** 10 D2

**MW:** 76.9 kDa

**Gene Summary:** Forms calcium-sensitive chloride channels. Permeable to bicarbonate (By similarity).  
[UniProtKB/Swiss-Prot Function]

### Product images:



Circular map for MR220298