

Product datasheet for MR220225

Rtl1 (NM_184109) Mouse Tagged ORF Clone

Product data:

Product Type:	Expression Plasmids
Product Name:	Rtl1 (NM_184109) Mouse Tagged ORF Clone
Tag:	Myc-DDK
Symbol:	Rtl1
Synonyms:	6430411K18Rik; Mar; Mart1; Mor1; Peg11
Vector:	pCMV6-Entry (PS100001)
E. coli Selection:	Kanamycin (25 ug/mL)
Cell Selection:	Neomycin
ORF Nucleotide Sequence:	>MR220225 representing NM_184109 Red=Cloning site Blue=ORF Green=Tags(s)

TTTTGTAATACGACTCACTATAGGGCGCCGGAATTCGTCGACTGGATCCGGTACCGAGGAGATCTGCC
GCC**CGATCGCC**

ATGATAGAACCCTCTGAAGACTCATTGAGACGATGATGGAGCTTAAGAATCCATCATCAAACAAATGG
AGTCCTCCGAGGGCTCATCCAACACCGTTGAAGAGACACCAGGCAGCAGTGGAGCCAGGCGGGGCCCA
GGCAGGGGCCAGGCGGAGGCCAGGCGGAGACCCAGGTGGAGGCCAGGCGGAGGCTCAGGCTGAAGCC
CAGGTTGAGGCCAGGTTGAGGCCAGGCGGGCTCAGATAGTGGCCAGCCAGGAAGAAAAGGAGCCAC
CCAGTGGCCCCCTCAAGGAAATGCAAGAGCTGCCACTAATCTACTCCAAGAAGTGGAGGAGCCATCCAG
TGGCCCCCACCAGGAAATGCAAGAGCTGCCACTGATCTACTCCAAGAAGTGGAGGAGCCATCCAGTGGC
CCCCACCAGGAAATGCAAGAGCTACCCACTGATCTACTCCGGGAAGTGGAGGAGCCATCCAGTGGCCCC
ACCAGGAAATGCAAGAGCTACCCACTGATCTACTCCGGGAAGTGGAGGAGCCATCCAGTGGCCCCCTACCA
GGAAATGCAAGAGCTACCCACTGATCTACTCCGGGAAGTGGAGGAGCCATCCAGTGGCCCCCTACCAGGAA
ATGCAAGAGCTACCCACTGATCTACTCCGGGAAGTGGAGGAGCCATCCAGTGGCCCCCTACCAGGAAATG
AAGAGCTACCCACTGATCTACTCCGGGAAGTGGAGGAGCCATCCAGTGGCCCCCTACCAGGAAATGCA
CGATCTACCCCAAGACATGGAGGAATCAAGTATGATGGTTTCAAGCAGGAGTCCGAGTATGGTTCAAAC
CACGAATTAAGTAATGGTTCAAACCATGAGTCGAGCTTTGGTTCAAACCCAGAGTCGAGCGATGTTTCCA
ACCTGGAGTCAAGCGGTGGTTCAAACCCAGGAGTCCAGCGATGGTTCAAAAAGGAGTCAAGCTATGATTC
AAACCCGGAGTTAAGTGATAATTCAAACCCAGGAGTTAAGCGATAATTCGAACCCAGGAGTCAAGCGACAGT
TCAAACCCAGTCAAGTGATATTCAAACCCAGGAAGGTCGGAACCCACTCAGTGGAGCATCCGATTATAGCA
TGGATGAAACAATCAACTCATCCGAGACCCAGTCAGACCAAGATGATACTGACCTGGGAGATGACGAGGA
AGAGGAGGAAGAGGAAGGTGGTGAAGAGGAAGGTGAGCCCAAGAACTCTCCAGAAGAAGTCGTGGCCACC
ATGGGGAACGTCTCTCGCTGTTCTCCGATGCAAGACCTAAAAGAACAACAGAGAGTGGCAGAAAGGC
TCATGATGCAGGCTATCAACGAAGGTCCGCTGCCCTCCCTCAGGCCCTTCTCTGGAGATCCGAGAGACTA
CCATGAGTTTGTCTGCTCTGCCAGATGACAATGCAGAATACCCAAGTATGCTATACAATGATGAGCTG
CGGGTGAATTCGTCATCCGCCACTGACTGACCTAGCCTTGGAAATGGGCCAACGACCTCGTAGAGCAGA



[View online »](#)

ACAGCCCAGTGATAAACAACTTCTCAGCCTTCTGGAGGCCATGTCAGAAAAGTTTGAGTATCGGCAGAC
 CCTGCGTGTGGCGGAAGACGCCATGTTCAACATCAGGCAGGGAAACCGCTGTGCGGCCGATTACATCAAT
 GAGTTCGGGGTCTGATACCCACCTTAGGCTGGCCAGATGAAGTCTGCAGGCCACCTGTGCCAGGGGC
 TCAACGAAGAGATCAGGCACTATCTGTTCCGGATCCCTCAGCCGAATTCCTAGACAACCTGATTGACT
 TGTCTGCAACTGAAGAAAAGCTGGCAGAGAGAAGAGCATTACTCAGGCTGCCACCTGAGTCGCGCCCA
 AGAAGCGTAGCCTGGATGGATGCTCCCGCCCCAGAGAAGTGGAGGGTAAGCAGCTGGCTGCCCAATGAGT
 TCCACCCAGACATTGATCGCGATCACCTCTTACTGCTCTTGGTGGAGTGGACCCCTACCACAGTGT
 CGCAGTGCGGCCCTGGTGGACTCAGGAGCAGAAGGGAACACATGGATGAGAGGTTTGCCAGGAACAC
 TATGTGGAACCTATGAGAAGCCTATCCACAGATAATCCAAGGTGTGGATGGCATCCCAATTGGCAATG
 AACCCGCTGGCTGTGCACCGAGCCCTGGTATGTGTCCACCAGAAGCATTATGAGTACATCGAATTTGA
 CATCTTACCTTCGCCAACTTCTCCATCGTCTTAGGCATGAAGTGGCTCCGAACCCATGCCCTGAAGTC
 GACTGGATGAGAGGCCGGTGTACCTTCCACTCTCCCTACTGTCTGCGGAATTGCTTACCCACCTCCAC
 CATGCATCGCACTAGAGACATACAGCATAAGCCTACTGCCGGATTGCCACACACATACTCAGACCTGGC
 CGACGTGTTTAAACCGAGGGAGGCAGATGATGAGACTTCCGACCAGCCAAGCTCAGACGGATCCGATGAT
 CTTTCTGAATCAGAGCCCTCTGAGCTTCCAGAGCTGGAGACAGTATCAAGCGCGCTCTTTACGAGT
 CTGGGGCCCGAGAGACTTGGAACTGTGAGCGCCAGGATGCAAGAGAAAAGCCAGGCAGCAAGAGAAAGC
 CAGGGAGCAAGAGGAATACTGGATACTGTATGACATGCTGACTGACAGACAAGACTACACGCAGATGGTA
 CCAGAGCTATTCGACCAGCTACATGGAGCGCATGGTTCACAAAAGTGGAGCTGCTTGGGATTAAGGAAA
 GTGAGATGAGGCACACGGTCACACACACGGAAGACACTTGGAGAGCATCGTTCGGTTTCGGCCTTACCA
 GATGAGATGCTACCGCCCTTACAATGAACTCATACTCTGACGAAGGGAACAACATTGTTCACTTCATC
 CTAAGAGACATCTAGGGTTGTTTGTGATTTGCCATGGCAGAGAGTCTGGTCTACTCAATGAGCCAGG
 AGGAACACTCCCAGCATGTCCGCAAGTCTGGTCCGCTTTCGGTATCACAACATCTACTGTTCACTGGA
 AAAAACTCAGTTCATCGCCAGACCGCTGAAATCTTGGGCTTCAACATATCCCCAAAGGGTGAAACTG
 AACAAAGAACCTTATGAACCTCATCGTGGGTGCCCTGTCCCTGGCAGCAGGAGGTCTTCAAAGTGTGA
 TTGACCTTGTCTATCCCTATCGCCACTTCTGGGAGAACTTCGCTGTATCGCAGCACCCCTAGTGAGACA
 ACTGCTGAGTTCAGAGCCCTACTACTGGGAGAAAGAGGAGCAGGAGGCCCTTGAATCCCTGAAGAGGGCT
 TTCCGCAAGTCGCCCCTTCTATCACCCTAAGCCTCAGAACCATTCTACTTGGAAACAGACATCACTG
 GGTCACTTCTGTCTGCCTCCCTGGTCCAAACCGACGACGAAACTGGCAAGAAATCACTGTGCTTTCTA
 TTCAAGACCCCTCTACAATGGAGTGGAGTACCCTCGAGTGGAGATGAGGATCCTTCCAATCCGGCT
 GCCTTCATGGTGTGGTCCGCTACCTGGAGAACACCGAGGAGCCCATCATGATCCTTCTCAACACAGAGG
 ATCTAGCCTCTGAATAATGACAGGCTACCGTACTTCTCCCCGGCATTGGGTCTTCTTCTTCTCACA
 CTTCAATTTTGGTGTATGGAGATGCCAGCTGAAGGTGACACACAAGCACTCTTCCGAGATGTTGGAAC
 CAGAGAGGCTCAGAGCAAGGTTTCTGCGCCACTGCTGCTTATGTCCATTAGGGCAAATCTAAGGTA
 TTGACAGATCCTCTGAGACTGAGGATAAAGAGGATGATGAAGAAGAGGAGGAGGAAGATGGTGAAGAAGA
 AGAAGGGGAGGAGGAGGAAGATGGTGAAGAAGAAGAAGGGGAGGAGGAGGAAGATGGTGAAGAAGAAGAG
 GAGGAGGAGGAAGATGATGAAGAAGAAGAAGGGGAGGAGGAGGAAGATGGTGAAGAAGAAGAAGGGGAGG
 AGGAGGAAGATGGTGAAGAAGAAGAAGGGGAGGAGGAGGAAGATGGTGAAGAAGAAGAAGGGGAGGAGGA
 GGGAGAGGAGGAGGAAGAAGGAGAGGAGGAAGAGGAGGAAGAAGAGGATGAGGAGGAAGAGGAGGAGGA
 GAGGAAGAGGAGGAAGAAGAGGAGGAAGAAGAGGAGGAGGAAGAAGAGGAGGAAGAAGAGGAGGAGGAAG
 ATGAGGAAGAAGAGGATGAGGAGGAAGAAGATGAGGAGGTGCCAGCATGGTGCAGGAGCTACTGGCTGC
 CATCCCGATGGACCATATCCTCAATGGCTTACTGGCTCACTTCACTGTGGCCAGATCCGGGCCGTTGTC
 CTAACCTTCTTCCGTGGCCTGCTCTACTGGAAGAGTCTCCTGGGTGTGGCAGCTGTCTGGTGTGTTGA
 GAGCAAGGCAGCCCTCTCCCCAGTGCCTGCCCTAATTTGGAAGTGGCCAGGCCCTCAGCACCGGCACAC
 ACTCCGACTCATCTGGACTCGACCCTATTGCGAGTAGTGGCATGGCCACAGCCATCGCTCAGTTGCTC
 AGCCAGATGCCCCCTCTAGTGGGTGCCAACCCCTCCCAGCTCGAGAGCTGGCTGAGCTTTTCTGGGCC
 CAAGGTGCTGGCATCGGAATGCTCTGCATTCCCAGCTCCACGGGGATGCGCTTACCCTGGGTTCTG
 GTTGACCTGTGTGAGTCTTTGGGTCAGAGTCAACCCTGAGGATGACGTCTTCTGACCTTACCAG
 CACCGGTACTTGGAACTGCACGTGCTGGGGATGAAGATGTCGTCTTGCAGAGAAGCCCTGCAAGACGACC
 TGCAACGTTACCGTCAGTGTGGCCTGCATGACGGCCTGCAAGACACCTCGCAGGACGCGCAGGACAACGA
 CGTGCAAGAGGACCTGTTTGGGACCCAGGAAGCGGTACCTTTCAGACCACGAAATCTTTTGGACCCAGAG
 GTCCTAGATTTCTCAACAACCGGCTACTCTACACCCTGGGCACCGATGGCCGCCCTACTCTGCTTAGCA
 GAGATCAGGTGGCCAGGCCCTCACACGATTCTGGCCATGGCCTCCAGAATGGCGCTGCCTTCCCAGC

CAGGGAACAGGCAAGGCTAGAAGAGCTATCAGACTCAGATGATGAACTTGAC

ACGCGTACGCGGCCGCTCGAGCAGAACTCATCTCAGAAGAGGATCTGGCAGCAATGATATCCTGGATT
ACAAGGATGACGACGATAAGGTTTAA

Protein Sequence:

>MR220225 representing NM_184109
Red=Cloning site Green=Tags(s)

MIEPSSEDSFETMELKNPSSKQMESSESSNTVEETPGSSGAQAGAQAQAEQAETQVEAQAEQAQEA
QVEAQVEAQAGSDSGPAQEEKEPPSGPLKEMQELPTNLLQEVEEPSSGPHQEMQELPTDLLQEVEEPSSG
PHQEMQELPTDLLREVEEPSSGPYQEMQELPTDLLREVEEPSSGPYQEMQELPTDLLREVEEPSSGPYQ
MQELPTDLLREVEEPSSGPYQEMQELPTDLLREVEEPSSDPCEASSNDLPQDMEESSDDGNSQESSDGSN
HEL SNGSNHSSFGSNPESSDVSNLESSGGSNQESSDGSQKESYDSNPELSDNSNQELSDNSNQESSDS
SNQSSDISNQESEPLSEASDYSMDETINSSETQSDQDDTDLGDDEEEEEEGGEEEGQPKNSPEEVVAT
MGNVISLFLRMQDLKEQQRVAERLMMQAINEGRLPSLRPFSGDRRDYHEFVVLQMTMQLYPSMLYNDEL
RVKVFIRHLTDLALEWANDLVEQNSPVINNFSAFLEAMSEKFEYRQTLRVAEDAMFNIRQGNRCAADYIN
EFRGLIPTLQWPDEVLAHLQGLNEEIRHYLFRIPQPNLNDLIVLVLQLEEKLAERRALLRPPESRP
RSVAWMDAPAPEKWRVSSWLPNFHPDIDRDHLFLLLLVRVDPYHSVAVRALVDSGAEGNYMDFRFAQEH
YVELYEKYPYQIIQGVGDIPIGNEPVWLCTEPLVCVHQKHYYIEFDILPSPNFSIVLGMKWLRTHAPEV
DWMRGRCTFHSPYCLRNCFTPPPPCIALETYSISLLPGLPHTYSDLADVFNPREADDETSQPSDDGSD
LSESESELQQAGSDQSGVFYESGARETLEPVSARMQEKARQQEKAREQEEYWILYDMLTDRQDYTQMV
PELFDQLHGAAWFTKLELLGIKESEMRHTVTHTEDTWASFGFGLHQMRCYRPF TMNSYSDEGNIVHFI
LKDILGLFVICHGREVLVYSMSQEEHSQHVRQVLVRFYHNIYCSLTKTQFHRQTAEILGFNISPKGVKL
NKNLMNLIVGCPVPGSRRLQSVIDLVPYRHFVENFAVIAAPLVRQLLSSEPYWGGEEQEALSLKRA
FRKSPVLVHPKQNPFFYLETITGSFLSASLVQTDDETGKKSTCAFYSRPLSTMEVEYPRVEMRILPIRA
AFMVWCRYLENTEEPIMILLNTEDLASLNNDRLLTVLLPGHWVFFFSHFNFGVMPAEGDTQALFRRCW
QRGFRARFLRPLLLMSIRANLRYFDRSSETEDKEDDEEEEEDEEEEEDEEEEEDEEEEEDEEEEE
EEEEDEEEEEDEEEEEDEEEEEDEEEEEDEEEEEDEEEEEDEEEEEDEEEEEDEEEEEDEEEEE
EEEEDEEEEEDEEEEEDEEEEEDEEEEEDEEEEEDEEEEEDEEEEEDEEEEEDEEEEEDEEEEE
LNFFRGLLYWKSLLGVAAVLVMLRARQPLSPVPAPNLEVARPQHRHTLRLILDSTLIASSGMATAIAQLL
SQMPPLVGANTLPARELAELFLGPRCWHRNALHSQPPRGMRFTPGFWLTLCFFGVVRNPEDDVFPDPYQ
HRYLELHVVGDEDVVLREALQDDLQRYRQCGLHDGLQDTSQDAQDNDVQEDLFGDQEAVTFRPRNLLDPE
VLDFLNNRLLYLTGTDGRLTLLSRDQVAQALTRFLAMASRMALPSPAREQARLEELSDSDDDEL

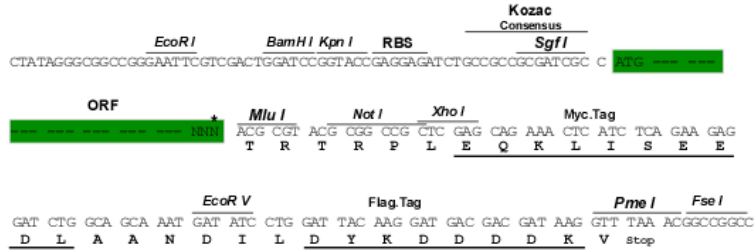
TRTRPLEQKLISEEDLAANDILDYKDDDDKV

Restriction Sites:

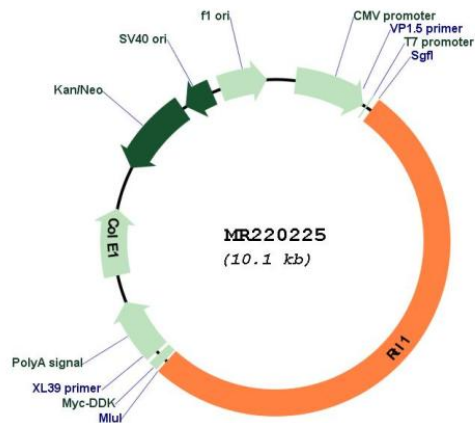
Sgfl-MluI

Cloning Scheme:

Cloning sites used for ORF Shutting:



* The last codon before the Stop codon of the ORF

Plasmid Map:


ACCN: NM_184109

ORF Size: 5232 bp

OTI Disclaimer: The molecular sequence of this clone aligns with the gene accession number as a point of reference only. However, individual transcript sequences of the same gene can differ through naturally occurring variations (e.g. polymorphisms), each with its own valid existence. This clone is substantially in agreement with the reference, but a complete review of all prevailing variants is recommended prior to use. [More info](#)

OTI Annotation: This clone was engineered to express the complete ORF with an expression tag. Expression varies depending on the nature of the gene.

Components: The ORF clone is ion-exchange column purified and shipped in a 2D barcoded Matrix tube containing 10ug of transfection-ready, dried plasmid DNA (reconstitute with 100 ul of water).

Reconstitution Method:

1. Centrifuge at 5,000xg for 5min.
2. Carefully open the tube and add 100ul of sterile water to dissolve the DNA.
3. Close the tube and incubate for 10 minutes at room temperature.
4. Briefly vortex the tube and then do a quick spin (less than 5000xg) to concentrate the liquid at the bottom.
5. Store the suspended plasmid at -20°C. The DNA is stable for at least one year from date of shipping when stored at -20°C.

RefSeq: [NM_184109.2](#)

RefSeq Size: 5235 bp

RefSeq ORF: 5235 bp

Locus ID: 353326

UniProt ID: [Q7M732](#)

Cytogenetics: 12 F1

MW: 199 kDa

Gene Summary: Plays an essential role in capillaries endothelial cells for the maintenance of feto-maternal interface and for development of the placenta.[UniProtKB/Swiss-Prot Function]