

## Product datasheet for **MR220194**

### Abcc12 (NM\_172912) Mouse Tagged ORF Clone

#### Product data:

Product Type:	Expression Plasmids
Product Name:	Abcc12 (NM_172912) Mouse Tagged ORF Clone
Tag:	Myc-DDK
Symbol:	Abcc12
Synonyms:	4930467B22Rik; MRP9
Mammalian Cell Selection:	Neomycin
Vector:	pCMV6-Entry (PS100001)
E. coli Selection:	Kanamycin (25 ug/mL)
ORF Nucleotide Sequence:	>MR220194 ORF sequence Red=Cloning site Blue=ORF Green=Tags(s)

TTTTGTAATACGACTCACTATAGGGCGGCCGGAATTCGTCGACTGGATCCGGTACCGAGGAGATCTGCC  
GCC**CGATCGCC**

ATGGTGGGTGAAGGCCCGTACCTTATCTCAGACCTGGATCGCAGAGGCCATCGGAGATCCTTTGCCGAGA  
GATATGACCCAGCCTGAAAACCATGATCCAGTGCACCCCGTCAAGGTTGGCACCCAATCCTGTGGA  
TGATGCTGGGCTGCTGTCCTTCGCCACGTTTTCTGGCTCACACCGGTGATGATTCGAAGTTACAAGCAC  
ACGCTGACTGTGGACACCCTGCCCCACTGTCTCCTTATGACTCATCGGACATCAACGCCAAGAGATTCC  
AGATCCTTTGGGAAGAAGAAATAAAGAGGGTAGGGCCTGAGAAGGCCTCCCTGGGCCGCGTGGTCTGGAA  
ATTCCAGAGAACCCGAGTTCTGATGGACGTTGTAGCCAACATCCTGTGCATCGTCATGGCAGCCTTGGGG  
CCGACAGTTCTCATTACCAAAATCCTCCAGCACATTACCAGCATCTCCTCCGGACACATCGGGATCGGCA  
TCTGCTTGTGCTGGCCCTCTTTACCACCGAGTTCACCAAAGTCTCTTTTGGGCCCTTGGCTGGGCCAT  
AAATTACCGCACAGCGATCCGACTGAAGGTGGCCCTCTCCACGCTAATCTTCGAAAACCTGCTGTCTTT  
AAGACGTTAACTCACATCTCTGCAGGCGAGGTAATCAATACTCAAGTGATAGCTATTCCTTGTGTTG  
AGGCTGCCTGTTTTGTCCCTTGCCAGCCACCATCCCGATCCTAATGGTCGTTTGTGCAGTGTACGCCTT  
TTTCATTCTGGGTCCACAGCTCTTGTCCGGATAAGTGTGTATCTCATATTCATCCCGATCCAGATGTTT  
ATGGCCAACTCAACTCAACTTTCCGAAGTCAAGCAATTTCAAGTGCAGACAGACAAACGGGTTCAAGCAATGA  
ATGAGTTTCTGACCTGCATCAAGCTGATTAATAATGACGCTGGGAGGAATCTTTTATAAACACCATTCAC  
CGACATAAGAAAGAGAGAGAAAAAATTACTGAAAAGGCTGGCTATGTCCAAAGTGGAAACTCAGCCCTG  
GCTCCCATTGTGTCACCATAGCCATTGTGCTACTTTCACTGCCACATTTTCTGAAACGCAAGCTCA  
CTGCCCTGTGGCATTAGTGTGATTGCCATGTTAATGTAATGAAGTTTCCATTGCAATCTTGCCCTT  
CTCGGTCAAAGCAGTGGCCGAAGCCAGTGTCTCTAAGGAGAATGAAGAAAATCCTCATAGCTAAAAGT  
CCCCATCCTACATCACTCAACCTGAAGACCCAGATACTATCTTGCTTTAGCAAATGCCACCTTGACAT  
GGGAACAAGAAATCAACAGGAAAAGTGACCCGCCGAAGGCACAAATTCAGAAAAGGCACGTTTTCAAGAA  
ACAGAGGCCAGAGCTATACAGCGAGCAAAGTCGATCAGATCAGGGAGTTGCTAGCCCGAGTGGCAAAGT



[View online »](#)

GGCAGCCCCAAGTCAGTGCTACACAACATCAGTTTTGTGGTGAGAAAGGGGAAGGCTTTGGGAATATGCG  
 GGAATGTTGGAAGCGGGAAGAGTTCCCTCATTTTCAGCTCTCCTAGGACAGATGCAGTTACAGAAAGGGGT  
 CGTGGCTGTCAATGGACCTTTGGCTTACGTTTCCAGCAAGCATGGATCTTCCATGGAAATGTGAGGGAG  
 AACATACTGTTTTGGAGAGAAATACAACCACAAAGGTACCAACACACAGTTTCATGTCTGTGGTCTCCAGA  
 AGGACTTGAACAGCCTCCCTTATGGAGACCTGACTGAGATTGGAGAGCGGGGTGTCAACCTCTCTGGGGG  
 ACAGAGGCAGAGGATCAGCCTGGCCCGTGTGTATGCTAATCGTCAGCTCTACCTGCTGGATGACCCG  
 CTCTCGGCTGTGGATGCCACGTGGGGAAGCATGCTTTGAAGAATGCATTAAGAAGACACTCAAAGGGA  
 AGACAGTTGTGCTGGTTACCCACCAGTTGCAGTTCCTGGAGTCTTGTGATTGAGGTATTCTGTAGAAAGA  
 TGGAGAGATCTGTGAAAAGGGCACCCACAGGAGTTGATGGAAGAGAGGGGGCGCTATGCAAAGCTTATC  
 CACAACCTCCGGGGACTGCAATTCAGGATCCAGAGCACATTTACAATGTAGCCATGGTGGAGACCTTGA  
 AGGAGAGCCAGCTCAGAGGGATGAAGACGCTGTCTTGGCTTCAGGAGATGAGAAGGACGAAGGAAAAGA  
 ACCTGAAACAGAAGAATTTGTGGACACAACGCTCCCGCTCACCAGCTCATCCAGACTGAATCCCCCAA  
 GAAGGAATCGTGACCTGGAAAACATATCACACGTATATCAAGGCTTCTGGAGGGTACCTGGTCTCCTTCC  
 TGGTTTTGTGCTCTTCTTCTGATGATGGCAGCTCTGCTTTCAGCACCTGGTGGCTGGGGATCTGGTT  
 AGACAGGGGTTCCAGGTCGTCTGTGCATCCAGAACAATAAGACAGCCTGCAACGTCGACCAGACCTTG  
 CAAGACACCAAACACCACATGTACCAGTTGGTTTACATAGCAAGCATGGTGTCTGTGTTGATGTTTGGCA  
 TCATCAAAGGCTTACCTTCACCAACACTACACTGATGGCGTCTTCTCTCTCCACAACAGAGTATTTAA  
 CAAGATCGTCAGGAGCCCAATGAGCTTCTTCGACACAACCTCCACAGGCCGGCTAATGAACCGCTTCTCT  
 AAAGACATGGACGAGCTGGACGTGAGGCTGCCGTTTACGCCCAGAACTTTCGACAGCAGTTTTTATGG  
 TGGTGTATTCTGGTGATCATGGCTGCCGTGTTTCTGTTGTCTTGTGGTGTGGCTGGCCTGGCTGT  
 AATCTTCTCATTCTTTACGCATCTCCATCGAGGAGTTCAGGAGCTCAAGCAGGTGGAGAATCAGC  
 CGGTACCTTGGTCTCTCACATCACCTCCTCCATACAGGGTCTGGGCGTCATCCACGCCCTACGACAAAA  
 AGGAGACTGCATCAGCAAGTTTAAGCACTCAACGACGAAAACCTCAGCCACCTCCTGTACTTCAACTG  
 CGCGCTCAGGTGGTTTGTCTCAGAATGGACATTCTCATGAACATTGTCACCTTTGTTGGCCTTGTCTG  
 GTGACCCTTAGTTTTTCTCAATCAGCGCCTCATCCAAAGGCTTGTATTGTCTTACATCATCCAGCTCA  
 GTGGATTGCTCAAGTGTGTGTGCGAACAGGAACAGAGACCCAAGCCAAGTTCACCTCCGACAGACTACT  
 GAGGGAGTACATTTTACCTGTGTTTCTGAACACACTCACCCCTTCAAAGTGGGGACCTGTCCCAAAGAC  
 TGGCCGAGCCGAGGGGAGATAACGTTCAAGGACTATCGGATGAGATACAGAGACAACACCCTCTCGTTC  
 TTGATGGCCTGAACCTGAACATCCAAAGCGGGCAGACAGTTGGGATTGTGGGAAGGACGGGCTCCGGAAA  
 ATCATCCCTGGGCATGGCCCTGTTTCTGCTGGTGAACAGCCTCTGGTACCATCATATTGACGAGGTG  
 GACATCTGCACTGTGGGTCTGGAAGACCTCCGAACCAAGCTGACCATGATCCCCAGGATCCTGTCTGT  
 TTGTAGGTACAGTAAGGTACAACCTGGACCCCTTGGGGAGCCACACCAGAGATGCTCTGGCATGTTTT  
 GGAAAGAAGCTTTCATGAGAGACACAATAATGAAACTCCCAGAGAAATTACAGGCAGAAGTACAGAAAAAT  
 GGGGAAAACCTTCTCAGTAGGAGAACGCCAGCTGCTTTGTATGGCCCGGGCACTTCTCCGTAATTCAAAA  
 TCATTCTCCTTGATGAAGCTACTGCCTCCATGGATTCCAAGACAGACACCCTTGTTCAGAGCACCATAAA  
 GGAGGCCCTTCAAAGCTGCACAGTGTGACCATCGCTCATCGCCTGAACACCGTCTCAACTGTGACCTT  
 GTCCTGGTGTGAAAAATGGGAAGGTGATTGAGTTTGACAAGCCTGAAGTCTCGCTGAGAAGCCCGACT  
 CTGCATTTGCGATGTTACTAGCTGCAGAGGTTGGACTG

**ACGCGTACGCGGCCGCTCGAGCAGAACTCATCTCAGAAGAGGATCTGGCAGCAAATGATATCCTGGATT**  
**ACAAGGATGACGACGATAAGGTTTAA**

**Protein Sequence:** >MR220194 protein sequence  
Red=Cloning site Green=Tags(s)

```

MVGEGPYLISDLDRRGHRRSFAERYDPSLKTMIIPVPRARLAPNPVDDAGLLSFATFSWLTPVMIRSYKH
TLTVDTLPPLSPYDSSDINAKRFQILWEEI KRVGPEKASLGRVVWKFQTRVLMDDVANILCIVMAALG
PTVLIHQILQHITSISSGHIGIGICLCLALFTTEFTKVLFWALAWAINYRTAIRLKVALSTLIFENLLSF
KTLTHISAGEVLNILSSDSYSLFEAALFCPLPATIPILMVVCAVYAFFILGSTALVGISVYLIFIPIQMF
MAKLNSTFRRSAISVTDKRVQTMNEFLTCIKLIKMYAWEESFINTIHDRKREKLLKAGYVQSGNSAL
APIVSTIAIVSTFTCHIFLKRKL TAPVAFSVIAMFNVMKFSIAILPFSVKAVAEASVSLRRMKKILIAKS
PPSYITQPEDPDTILLANATLTWEQEI NRKSDPPKAQIQKRHVFKKQRPELYSEQSRSDQGVASPEWQS
GSPKSVLHNI SFVVRKGVVLGICGNVSGKSSLISALLGQMQLQKGVAVNGPLAYVSQAWIFHGNVRE
NILFGKEYNHQRYQHTVHVCGLQKDLNSLPYGDLTEIGERGVNLSGGQRQRI SLARAVYANRQLYLLDDP
LSAVDAHVGKHFEECIKKT LKGT VVLVTHQLQFLESCDEVILLEGEICEKGTKHKLMEERGRYAKLI
HNLRLGLQFKDPEHIYNVAMVETLKE SPAQRDEDAVLASGDEKDEGKEPETEEFVDNAPAHQLIQTESPQ
EGIVTWKYHTYTIKASGGYLVSFLVLCFLFMMGSSAFSTWWLGIWLD RGSQVVCASQNNKTACNV DQTL
QDTKHHMYQLVYIASMVSLMFGI IKGFTFTNTTLMASSSLHNRVFNKIVRSPMSFFD TPTGRLMNRFS
KDMDEL DVRLPFHAENFLQQFFMVVILVIMAAVFPVVLVVL AGLAVIFLILLRIFHRGVQELKQVENIS
RSPWFSHITSSIQGLGVIHAYDKKDDCISKFKTLNDESSHLLYFNALRWFALRMDILMNI VTFVVALL
VTL SFSSISASSKGLSLSYIIQLSGLLQVCVRTGTETQAKFTSAELLREYILTCVPEHTHPFKVGTCPKD
WPSRGEITFKDYRMRYRDNTPLVLDGLNLNIQSGQTVGIVGR TGS GKSSLGMAFRLVEPASGTIIIDEV
DICTVGLLEDLRTLKMIPQDPVLFVGT VRYNLDPLGSHTDEMLWHVLERTFMRD TIMKLEPKLQAEVTEN
GENFSVGERQLLCMARALLRNSKIILLDEATASMDSKDTLVQSTIKEAFK SCTLTIAHRLNTVLNCDL
VLVMENGVIEFDKPEVLAEKPD SAFAMLLAAEVGL
    
```

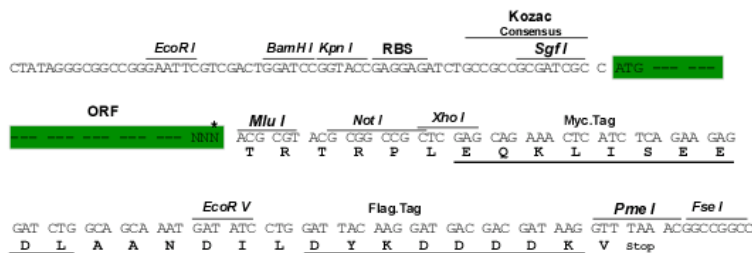
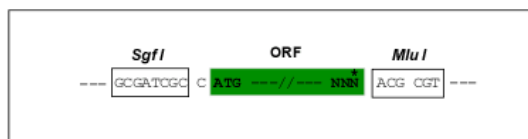
TRTRPLEQKLISEEDLAANDILDYKDDDDKV

**Restriction Sites:**

SgfI-MluI

**Cloning Scheme:**

Cloning sites used for ORF Shutting:



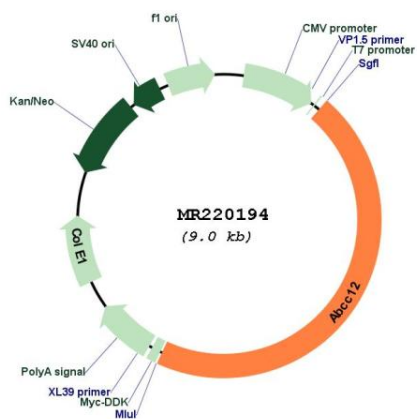
\* The last codon before the Stop codon of the ORF

**ACCN:** NM\_172912

**ORF Size:** 4101 bp

<b>OTI Disclaimer:</b>	The molecular sequence of this clone aligns with the gene accession number as a point of reference only. However, individual transcript sequences of the same gene can differ through naturally occurring variations (e.g. polymorphisms), each with its own valid existence. This clone is substantially in agreement with the reference, but a complete review of all prevailing variants is recommended prior to use. <a href="#">More info</a>
<b>OTI Annotation:</b>	This clone was engineered to express the complete ORF with an expression tag. Expression varies depending on the nature of the gene.
<b>Components:</b>	The ORF clone is ion-exchange column purified and shipped in a 2D barcoded Matrix tube containing 10ug of transfection-ready, dried plasmid DNA (reconstitute with 100 ul of water).
<b>Reconstitution Method:</b>	<ol style="list-style-type: none"><li>1. Centrifuge at 5,000xg for 5min.</li><li>2. Carefully open the tube and add 100ul of sterile water to dissolve the DNA.</li><li>3. Close the tube and incubate for 10 minutes at room temperature.</li><li>4. Briefly vortex the tube and then do a quick spin (less than 5000xg) to concentrate the liquid at the bottom.</li><li>5. Store the suspended plasmid at -20°C. The DNA is stable for at least one year from date of shipping when stored at -20°C.</li></ol>
<b>RefSeq:</b>	<a href="#">NM_172912.4</a> , <a href="#">NP_766500.3</a>
<b>RefSeq Size:</b>	4511 bp
<b>RefSeq ORF:</b>	4101 bp
<b>Locus ID:</b>	244562
<b>UniProt ID:</b>	<a href="#">Q80WJ6</a>
<b>Cytogenetics:</b>	8 42.06 cM
<b>MW:</b>	153.1 kDa
<b>Gene Summary:</b>	Probable transporter.[UniProtKB/Swiss-Prot Function]

Product images:



Circular map for MR220194