

Product datasheet for **MR220185**

Colec11 (NM_027866) Mouse Tagged ORF Clone

Product data:

Product Type:	Expression Plasmids
Product Name:	Colec11 (NM_027866) Mouse Tagged ORF Clone
Tag:	Myc-DDK
Symbol:	Colec11
Synonyms:	CL-K1
Mammalian Cell Selection:	Neomycin
Vector:	pCMV6-Entry (PS100001)
E. coli Selection:	Kanamycin (25 ug/mL)
ORF Nucleotide Sequence:	>MR220185 representing NM_027866 Red=Cloning site Blue=ORF Green=Tags(s)

TTTTGTAATACGACTCACTATAGGGCGGCCGGAATTCGTCGACTGGATCCGGTACCGAGGAGATCTGCC
GCC**CGATCGCC**

ATGATGATGAGGGACCTGGCTCTTGCAGGCATGCTGATTAGCCTGGCTTTCCTGTCCCTGCTGCCATCTG
GATGTCCCTCAGCAGACCACAGAGGACGCCTGCTGTGCAGATTCTGTCCCTGGCCTCAAAGGGGATGC
AGGAGAAAAGGGAGACAAAGGAGCCCCAGGACGGCCAGGAAGAGTCGGCCCTACAGGAGAAAAGGAGAC
ATGGGGGACAAAGGACAGAAAGGCACTGTGGGCCCCATGGAAAAATTGGTCCCATTGGCGCAAAGGTG
AAAAAGGAGATTCTGGTGATATCGGACCCCTGGCCCCAGTGGAGAACCCTGGTATTCCATGTGAGTGCAG
TCAGCTGAGGAAGGCTATTGGGGAGATGGACAACCAGGCTCACTCAACTGACAACCTGAGCTAAAATTCATA
AAAAATGCTGTTGCTGGCGTGCGGAGACTGAGAGCAAGATCTACCTGCTGGTGAAGGAGGAGAAGCGGT
ACGCAGATGCCAGCTGTCTGCCAAGCCGAGGCGGCACACTGAGCATGCCCAAAGACGAGGCAGCCAA
TGGCCTGATGGCTTACACTGGCACAGGCTGGCCTGGCCCGAGTCTTCATCGGTATCAATGACCTGGAG
AAAGAAGGTGCTTTCGTGTACTCGGACCGCTCCCCATGCAGACCTTCAACAAGTGGCGCAGTGGAGAGC
CCAACAACGCCTATGATGAGGAGGACTGTGTGGAGATGGTGGCCTCAGGTGGCTGGAATGATGTGGCCTG
CCACATTACCATGTACTTCATGTGCGAGTTTGACAAAGAGAATTG

ACGCGTACGCGGCCGCTCGAGCAGAACTCATCTCAGAAGAGGATCTGGCAGCAAATGATATCCTGGATT
ACAAGGATGACGACGATAAGGTTTAA



[View online »](#)

Protein Sequence: >MR220185 representing NM_027866
 Red=Cloning site Green=Tags(s)

MMMRDLALAGMLISLAFLLPSGCPQQTEDACSVQILVPLKGDAGEKGDKGAPGRPRVGPTEKGD
 MGDKGQKGTVGRHGKIGPIGAKGEKGDSDIGPPGPSGEPGIPCECSQLRKAIGEMDNQVTQLTTELKFI
 KNAVAGVRETESKIYLLVKEEKRYADAQLSCQARGGTL SMPKDEAANGLMASYLAQAGLARVFIGINDLE
 KEGAFVYSDRSPMQTFNKWRSGEPNNA YDEEDCVEMVASGGWNDVACHI TMYFMCFDKENL

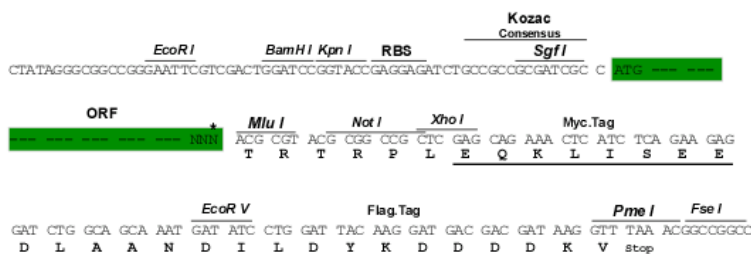
TRTRPLEQKLISEEDLAANDILDYKDDDDKV

Chromatograms: https://cdn.origene.com/chromatograms/mm9078_g05.zip

Restriction Sites: SgfI-MluI

Cloning Scheme:

Cloning sites used for ORF Shuttling:



* The last codon before the Stop codon of the ORF

ACCN: NM_027866

ORF Size: 816 bp

OTI Disclaimer: The molecular sequence of this clone aligns with the gene accession number as a point of reference only. However, individual transcript sequences of the same gene can differ through naturally occurring variations (e.g. polymorphisms), each with its own valid existence. This clone is substantially in agreement with the reference, but a complete review of all prevailing variants is recommended prior to use. [More info](#)

OTI Annotation: This clone was engineered to express the complete ORF with an expression tag. Expression varies depending on the nature of the gene.

Components: The ORF clone is ion-exchange column purified and shipped in a 2D barcoded Matrix tube containing 10ug of transfection-ready, dried plasmid DNA (reconstitute with 100 ul of water).

Reconstitution Method:

1. Centrifuge at 5,000xg for 5min.
2. Carefully open the tube and add 100ul of sterile water to dissolve the DNA.
3. Close the tube and incubate for 10 minutes at room temperature.
4. Briefly vortex the tube and then do a quick spin (less than 5000xg) to concentrate the liquid at the bottom.
5. Store the suspended plasmid at -20°C. The DNA is stable for at least one year from date of shipping when stored at -20°C.

RefSeq: [NM_027866.2](#), [NP_082142.1](#)

RefSeq Size: 1383 bp

RefSeq ORF: 819 bp

Locus ID: 71693

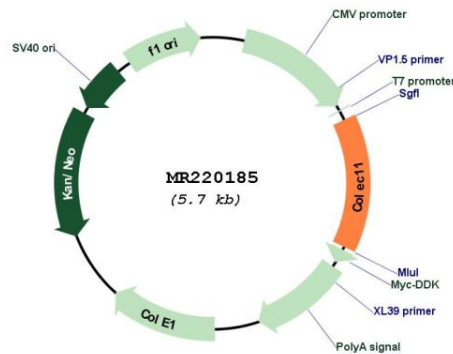
UniProt ID: [Q3SXB8](#)

Cytogenetics: 12 A2

MW: 29 kDa

Gene Summary: This gene encodes a member of the collectin family of C-type lectins that possess collagen-like sequences and carbohydrate recognition domains. Collectins are secreted proteins that play important roles in the innate immune system by binding to carbohydrate antigens on microorganisms, facilitating their recognition and removal. The encoded protein binds to multiple sugars with a preference for fucose and mannose. Mutations in the human gene are a cause of 3MC syndrome-2. Alternative splicing results in multiple transcript variants encoding different isoforms. [provided by RefSeq, Sep 2015]

Product images:



Circular map for MR220185