

Product datasheet for **MR220175**

Rpl7a (NM_013721) Mouse Tagged ORF Clone

Product data:

Product Type:	Expression Plasmids
Product Name:	Rpl7a (NM_013721) Mouse Tagged ORF Clone
Tag:	Myc-DDK
Symbol:	Rpl7a
Synonyms:	Surf3
Mammalian Cell Selection:	Neomycin
Vector:	pCMV6-Entry (PS100001)
E. coli Selection:	Kanamycin (25 ug/mL)
ORF Nucleotide Sequence:	>MR220175 ORF sequence Red=Cloning site Blue=ORF Green=Tags(s)

TTTTGTAATACGACTCACTATAGGGCGCCGGGAATTCGTCGACTGGATCCGGTACCGAGGAGATCTGCC
GCC**CGATCGCC**

ATGCCAAAGGGAAGAAGGCCAAGGGGAAGAAGGTGGCCCCGGCCCCCGCGTCGTCAAGAAGCAGGAGG
CCAAGAAGGTGGTCAACCCTCTGTTGAGAAGAGGCCCAAGAACTCGGCATTGGACAGGACATCCAGCC
CAAAAGAGATTTAACGCGCTTCGTCAAATGGCCCCGCTACATCAGACTGCAGCGGCAAAGAGCTATCCTC
TACAAGCGGCTCAAAGTCCCTCCTGCCATTAACCAGTTACCCAGGCCCTGGACAGGCAGACAGCTACTC
AGCTGCTTAAGCTTGCCACAAGTACAGGCCAGAGACAAAGCAAGAGAAGAAGCAAAAGGCTACTGGCCCG
TGCTGAGAAGAAAGCTGCTGGCAAAGGGGACGTCCTCAACTAAGAGACCACCTGTCCTCCGAGCAGGAGTC
AATACAGTCAACCACCTTGGTGGAGAACAAGAAGGCTCAGCTGGTGGTATTGCCATGACGTAGACCCCA
TTGAGCTGGTGGTTTTCTACCTGCTCTGTGTCGAAAGATGGGGGTGCCCTACTGCATCATCAAGGGAAA
GGCCAGGCTGGGGCACCTGGTCCACAGGAAGACATGCACCACCGTTGCCCTCACACAGGTTAACTCGGAA
GACAAGGCTGCTCGCTAAGCTGGTGGGAGCTATTAGGACCAATTATAATGACAGATATGACGAGATCC
GTCGCCACTGGGGAGGCAACGTCCTGGTCCCTAAGTCTGTGGCTCGAATTGCCAAGCTGGAAAAAGCAA
GGCTAAAGAACTCGCCACTAAATTGGGT

ACGCGTACGCGGCCGCTCGAGCAGAAACTCATCTCAGAAGAGGATCTGGCAGCAAATGATATCCTGGATT
ACAAGGATGACGACGATAAGGTTTAA



[View online »](#)

Protein Sequence: >MR220175 protein sequence
 Red=Cloning site Green=Tags(s)

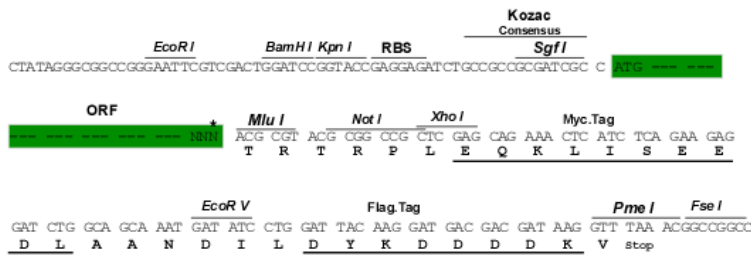
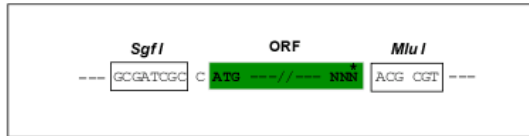
MPKGGKAKGKKVAPAPAVVKKQEAKKVVNPLFEKRPKNFGIGQDIQPKRDLTRFVKWPRYIRLQRQRAIL
 YKRLKVPPAINQFTQALDRQTATQLLKLAKYRPETKQEKQRLARA EKKAAGKGDVPTKRPPVLRAGV
 NTVTTLVENKKAQLVVI AHDVDP IELVFLPALCRKMGVPYCI IKGKARLGH LVHRKTCTTVAFTQVNSE
 DKGALAKLVGAIRTNYNDRYDEIRRHWGNNVLPKPSVARI AKLEKAKAKELATKLG

TRTRPLEQKLISEEDLAANDILDYKDDDDKV

Restriction Sites: SgfI-MluI

Cloning Scheme:

Cloning sites used for ORF Shuttling:



* The last codon before the Stop codon of the ORF

ACCN: NM_013721

ORF Size: 801 bp

OTI Disclaimer: The molecular sequence of this clone aligns with the gene accession number as a point of reference only. However, individual transcript sequences of the same gene can differ through naturally occurring variations (e.g. polymorphisms), each with its own valid existence. This clone is substantially in agreement with the reference, but a complete review of all prevailing variants is recommended prior to use. [More info](#)

OTI Annotation: This clone was engineered to express the complete ORF with an expression tag. Expression varies depending on the nature of the gene.

Components: The ORF clone is ion-exchange column purified and shipped in a 2D barcoded Matrix tube containing 10ug of transfection-ready, dried plasmid DNA (reconstitute with 100 ul of water).

Reconstitution Method:

1. Centrifuge at 5,000xg for 5min.
2. Carefully open the tube and add 100ul of sterile water to dissolve the DNA.
3. Close the tube and incubate for 10 minutes at room temperature.
4. Briefly vortex the tube and then do a quick spin (less than 5000xg) to concentrate the liquid at the bottom.
5. Store the suspended plasmid at -20°C. The DNA is stable for at least one year from date of shipping when stored at -20°C.

RefSeq: [NM_013721.1](#), [NM_013721.2](#), [NM_013721.3](#), [NP_038749.1](#)

RefSeq Size: 864 bp

RefSeq ORF: 801 bp

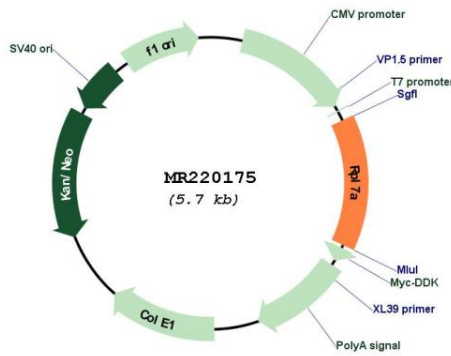
Locus ID: 27176

UniProt ID: [P12970](#)

Cytogenetics: 2 19.1 cM

MW: 29.9 kDa

Product images:



Circular map for MR220175