

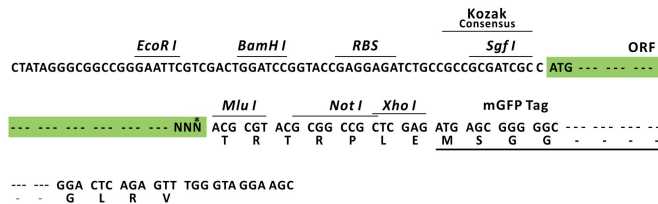
Product datasheet for MR220166L4

Aup1 (NM_007517) Mouse Tagged Lenti ORF Clone

Product data:

Product Type:	Expression Plasmids
Product Name:	Aup1 (NM_007517) Mouse Tagged Lenti ORF Clone
Tag:	mGFP
Symbol:	Aup1
Synonyms:	AA589454
Mammalian Cell Selection:	Puromycin
Vector:	pLenti-C-mGFP-P2A-Puro (PS100093)
E. coli Selection:	Chloramphenicol (34 ug/mL)
ORF Nucleotide Sequence:	The ORF insert of this clone is exactly the same as(MR220166).
Restriction Sites:	SgfI-MluI
Cloning Scheme:	

Cloning sites used for ORF Shuttling:



* The last codon before the Stop codon of the ORF.

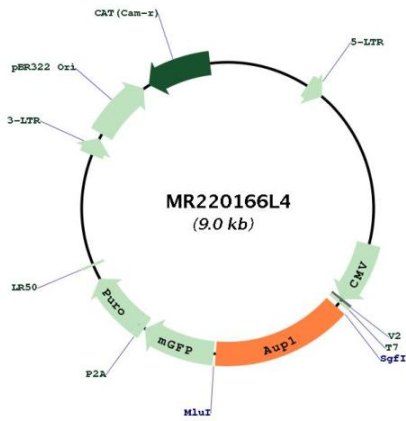
ACCN:	NM_007517
ORF Size:	1317 bp



[View online »](#)

OTI Disclaimer:	The molecular sequence of this clone aligns with the gene accession number as a point of reference only. However, individual transcript sequences of the same gene can differ through naturally occurring variations (e.g. polymorphisms), each with its own valid existence. This clone is substantially in agreement with the reference, but a complete review of all prevailing variants is recommended prior to use. More info
OTI Annotation:	This clone was engineered to express the complete ORF with an expression tag. Expression varies depending on the nature of the gene.
Components:	The ORF clone is ion-exchange column purified and shipped in a 2D barcoded Matrix tube containing 10ug of transfection-ready, dried plasmid DNA (reconstitute with 100 ul of water).
Reconstitution Method:	<ol style="list-style-type: none">1. Centrifuge at 5,000xg for 5min.2. Carefully open the tube and add 100ul of sterile water to dissolve the DNA.3. Close the tube and incubate for 10 minutes at room temperature.4. Briefly vortex the tube and then do a quick spin (less than 5000xg) to concentrate the liquid at the bottom.5. Store the suspended plasmid at -20°C. The DNA is stable for at least one year from date of shipping when stored at -20°C.
RefSeq:	NM_007517.3 , NP_031543.2
RefSeq Size:	1527 bp
RefSeq ORF:	1233 bp
Locus ID:	11993
Cytogenetics:	6 35.94 cM
Gene Summary:	The protein encoded by this gene contains several conserved domains including a hydrophobic domain, an acetyltransferase domain, a ubiquitin binding domain, and a domain required for recruitment of ubiquitin-conjugating enzyme E2 G2 (Ube2g2). In humans, this protein localizes to the endoplasmic reticulum and to lipid droplets. This protein is thought to be involved both in the degradation of misfolded proteins from the endoplasmic reticulum and in the storage of neutral lipids. Reduced expression of the human ortholog of this gene strongly reduces lipid droplet clustering in the cell, and causes stabilization of misfolded proteins. Alternative splicing results in multiple transcript variants. [provided by RefSeq, Aug 2014]

Product images:



Circular map for MR220166L4