

Product datasheet for MR220154L3

Rtn2 (NM_001025364) Mouse Tagged Lenti ORF Clone

Product data:

Product Type:	Expression Plasmids
Product Name:	Rtn2 (NM_001025364) Mouse Tagged Lenti ORF Clone
Tag:	Myc-DDK
Symbol:	Rtn2
Synonyms:	MMS10-P; Ms10p; Nspl1; NSPLI
Mammalian Cell Selection:	Puromycin
Vector:	pLenti-C-Myc-DDK-P2A-Puro (PS100092)
E. coli Selection:	Chloramphenicol (34 ug/mL)
ORF Nucleotide Sequence:	The ORF insert of this clone is exactly the same as(MR220154).
Restriction Sites:	SgfI-MluI
Cloning Scheme:	

Cloning sites used for ORF Shuttling:



* The last codon before the Stop codon of the ORF.

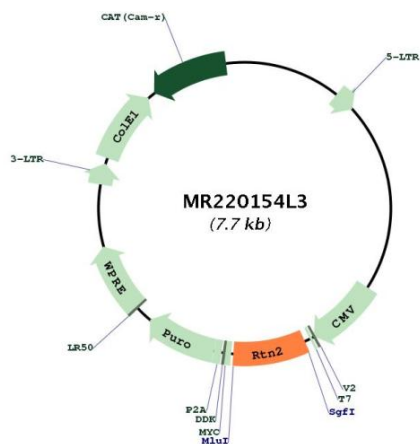
ACCN:	NM_001025364
ORF Size:	612 bp



[View online >](#)

OTI Disclaimer:	The molecular sequence of this clone aligns with the gene accession number as a point of reference only. However, individual transcript sequences of the same gene can differ through naturally occurring variations (e.g. polymorphisms), each with its own valid existence. This clone is substantially in agreement with the reference, but a complete review of all prevailing variants is recommended prior to use. More info
OTI Annotation:	This clone was engineered to express the complete ORF with an expression tag. Expression varies depending on the nature of the gene.
Components:	The ORF clone is ion-exchange column purified and shipped in a 2D barcoded Matrix tube containing 10ug of transfection-ready, dried plasmid DNA (reconstitute with 100 ul of water).
Reconstitution Method:	<ol style="list-style-type: none">1. Centrifuge at 5,000xg for 5min.2. Carefully open the tube and add 100ul of sterile water to dissolve the DNA.3. Close the tube and incubate for 10 minutes at room temperature.4. Briefly vortex the tube and then do a quick spin (less than 5000xg) to concentrate the liquid at the bottom.5. Store the suspended plasmid at -20°C. The DNA is stable for at least one year from date of shipping when stored at -20°C.
RefSeq:	NM_001025364.3 , NP_001020535.1
RefSeq Size:	1080 bp
RefSeq ORF:	615 bp
Locus ID:	20167
UniProt ID:	O70622
Cytogenetics:	7 9.54 cM
Gene Summary:	Inhibits amyloid precursor protein processing, probably by blocking BACE1 activity (By similarity). Enhances trafficking of the glutamate transporter SLC1A1/EAAC1 from the endoplasmic reticulum to the cell surface (By similarity). Plays a role in the translocation of SLC2A4/GLUT4 from intracellular membranes to the cell membrane which facilitates the uptake of glucose into the cell (PubMed:19720795).[UniProtKB/Swiss-Prot Function]

Product images:



Circular map for MR220154L3