

## Product datasheet for **MR220091**

### Elmo1 (NM\_080288) Mouse Tagged ORF Clone

#### Product data:

|                           |  |
|---------------------------|--|
| Product Type:             | Expression Plasmids                      |
| Product Name:             | Elmo1 (NM_080288) Mouse Tagged ORF Clone |
| Tag:                      | Myc-DDK                                  |
| Symbol:                   | Elmo1                                    |
| Synonyms:                 | 6330578D22Rik; C230095H21Rik; CED-12     |
| Mammalian Cell Selection: | Neomycin                                 |
| Vector:                   | pCMV6-Entry (PS100001)                   |
| E. coli Selection:        | Kanamycin (25 ug/mL)                     |



[View online »](#)

**ORF Nucleotide Sequence:**

>MR220091 representing NM\_080288  
 Red=Cloning site Blue=ORF Green=Tags(s)

TTTTGTAATACGACTCACTATAGGGCGGCCGGAATTCGTGACTGGATCCGGTACCGAGGAGATCTGCC  
 GCC**CGCATCGCC**

ATGCCCGCCTTCGGACATCGTGAAGGTGGCCATAGAATGGCCTGGCGCCTACCCTAAACTCATGGAGA  
 TTGACCAGAAAAAGCCACTGTCTGCCATTATAAAGGAAGTCTGTGATGGGTGGTCTCTTGCCAACCATGA  
 ATATTTTGCACACTGCAGCACGCTGATAGTTCAAACCTTCTACATCACAGAAAAGAATCGCAACGAAATAAAA  
 AATGGCACGATCCTTCGATTAACACATCTCCAGCTCAGAATGCCAGCAGCTCCATGAACGAATACAGT  
 CATCAAGTATGGATGCCAAGTTGGAAGCCCTGAAGGACTTGGCCAGCCTCTCCCGGGATGTTACCTTTGC  
 TCAGGAGTTCATAAACCTGGATGGCATCTCACTTCTCACTCAGATGGTGGAAAGTGGCACTGAACGATAC  
 CAGAAGTGCAGAAGATTATGAAGCCCTGCTTTGGAGACATGCTGCCTTCACTCTCACAGCCTTTGTGG  
 AGTTGATGGACCACGGCATTGTATCATGGGATACATTCTCAGTGGCCTTCATTAAGAAGATAGCCAGCTT  
 TGTGAACAAGTCTGCCATAGACATCTCAATCCTCCAGCGGTCTTGGCCATTCTGGAGTCAATGGTTCTC  
 AACAGTCATGACCTCTACCAAAGGTAGCCAGGAGATCACCATTTGGCCAACTATTCTCATCTTCAGG  
 GGACAGACCAAGAAATACAACTTACACATTGCTGTAATCAACGCACCTTTCTCAAAGCTCTGATGA  
 GAGGAGACAGGAGATGGCGAATATTTGGCTCAGAAGCAGCTGCCTACATCATTTTAACACATGTCATC  
 CGAGCACAGCGGCCATCAACAATGAGATGGCACACCAGTTATATGTTCTCCAAGTGTGACCTTTAAC  
 TTCTGGAAGACAGGATGATGACTAAGATGGACCCAGGACCAGGCCAAAGGGACATCATATTTGAACT  
 TCGAAGAATTGCTTCGATGCAGAGTCAGAACCTAATAACAGCAGTGGCAGCATGGAGAAACGCAAGTCC  
 ATGTACACTCGGATTATAAAAACTTGGCTTCATTAATCACGTCAATCCTGCCATGGACTTCACACAGA  
 CCCCTCCTGGGATGCTGGCTCTGGACAACATGCTGTATTTGCTAAGCACCACCAGGATGCATACATCCG  
 GATCGTGTAGAGAACAGCAGCCGAGAAGATAAACATGAGTGCCCTTCGGCCGCAGCAGTATAGAGCTG  
 ACCAAGATGCTGTGTGAGATCCTCAAAGTGGGCGAGCTGCCTAGTGAGACCTGCAACGACTTTCACCCGA  
 TGTTCTTACCCATGACAGATCTTTGAGGAATCTTCTGCATTTGCATTCAACTCCTGAACAAAACATG  
 GAAGGAAATGAGGGCAACATCTGAAGACTTCAACAAGGTAATGCAGGTGGTGAAGGAGCAGGTTATGAGA  
 GCGCTTACAACCAAGCTAGTTCCTGGACCAGTTCAAAGCAAGCTGCAAAACCTGAGCTACACCGAGA  
 TCCTGAAAATCCGCCAGTCTGAGAGGATGAACCAGGAAGATTTCCAGTCTCGCCGATTTTGAACATAA  
 GGAGAAGATCCAGCCAGAAATCTTAGAGCTGATTAACAGCAGCGCTGAACCGCCTTGGAAGGGACC  
 TGCTTTAGGAACTCAATGCTCGCCGGAGACAAGACAAGTTTTGGTATTGTCGGCTTTCACCAAATCACA  
 AGGTCTTACATTATGGCGACTTGAAGAGAGCCCAAGGAGAAGTGCCACAGATTCCCTGCAGGACAA  
 ATTGCCGGTGGCAGATATCAAAGCAGTGGTGACGGGAAAGGACTGCCCTCATATGAAAGGAAAGGTGCC  
 CTTAAACAAAACAAGGAGGTGCTTGAACCTGCTTTCTCCATTTATACGACTCAAATTGCCAACCTGAACT  
 TCATTGCTCCTGATAAGCATGAGTACTGCATCTGGACAGATGGGCTGAATGCACTGCTTGGGAAGGACAT  
 GATGAGTGACCTGACACGCAATGACCTGGACACCCTGCTGAGCATGGAGATCAAGCTTCGCTGCTGGAC  
 CTGGAAAACATCCAGATCCCGGATGCACCTCCGCCTATCCCAAGGAACCTAGCAACTATGACTTTGTCT  
 ATGACTGTAAC

**ACGCGT**ACGCGGCCGCTCGAGCAGAACTCATCTCAGAAGAGGATCTGGCAGCAAATGATATCCTGGATT  
 ACAAGGATGACGACGATAAGGTTTAA

**Protein Sequence:** >MR220091 representing NM\_080288  
 Red=Cloning site Green=Tags(s)

MPPPSDIVKVAIEWPGAYPKLMEIDQKKPLSAI I KEVCDGWSLANHEYFALQHADSSNFYITEKNRNEIK  
 NGTILRLTTSPAQNAQQLHERIQSSMDAKLEALKDLASL SRDVTFAQEFINLDGISLLTQMVESGTERY  
 QKLQKIMKPCFGDMLSFTLTAFVELMDHGI VSWDTFSVAFIKKIASFVNKSAIDISILQRSLAILESMVL  
 NSHDLYQKVAQEITIGQLIPHLQGT DQEIQTYTIAVINALFLKAPDERRQEMANILAQKQLRYIILTHVI  
 RAQRAINNEMAHQLYVLQVLT FNLLLED RMMTKMDPQDQAQRDIIFELRRIAFDAESEPNSSSGSMEKRKS  
 MYTRDYKKLGF INHVNPAMDFTQTPPGMLALDNMLYFAKHHQDAYIRIVLENSSREDKHECPFGRSSIEL  
 TKMLCEILKVGELPSETCND FHPMFTHDRSFEEFFCICIQLLNKTWKEMRATSEDFNKVMQVVKEQVMR  
 ALTTKPSLSDQFKSKLQNL SYTEILKIRQSERMNQEDFQSRPILELKEKIQPEILELIKQRLNRLVEGT  
 CFRKLNARRRQDKFWYCR LSPNHKVLHYGDLEES PQGEVPHDSLQDKLPVADIKAVVTGKDCPHMKEKGA  
 LKQNKVELELAFSILYD S N C Q L N F I A P D K H E Y C I W T D G L N A L L G K D M M S D L T R N D L T L L S M E I K L R L L D  
 L E N I Q I P D A P P P I P K E P S N Y D F V Y D C N

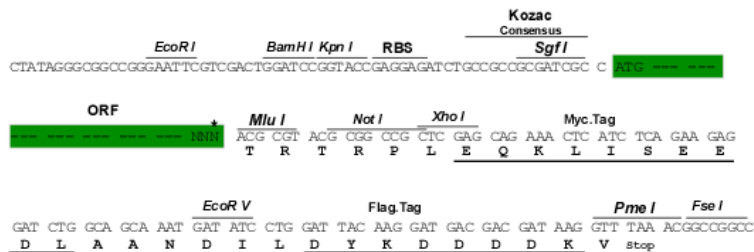
TRTRPLEQKLI SEEDLAANDILDYKDDDDKV

**Chromatograms:** [https://cdn.origene.com/chromatograms/mm9091\\_f07.zip](https://cdn.origene.com/chromatograms/mm9091_f07.zip)

**Restriction Sites:** Sgfl-MluI

**Cloning Scheme:**

Cloning sites used for ORF Shuttling:



\* The last codon before the Stop codon of the ORF

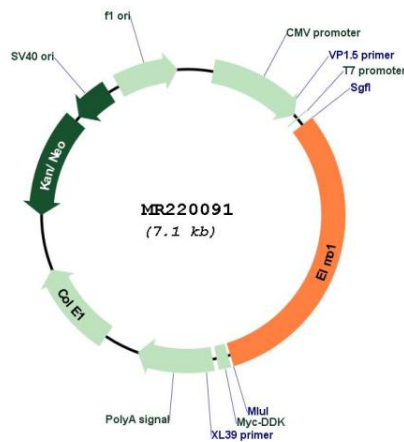
**ACCN:** NM\_080288

**ORF Size:** 2181 bp

**OTI Disclaimer:** The molecular sequence of this clone aligns with the gene accession number as a point of reference only. However, individual transcript sequences of the same gene can differ through naturally occurring variations (e.g. polymorphisms), each with its own valid existence. This clone is substantially in agreement with the reference, but a complete review of all prevailing variants is recommended prior to use. [More info](#)

**OTI Annotation:** This clone was engineered to express the complete ORF with an expression tag. Expression varies depending on the nature of the gene.

|                               |   |
|-------------------------------|---|
| <b>Components:</b>            | The ORF clone is ion-exchange column purified and shipped in a 2D barcoded Matrix tube containing 10ug of transfection-ready, dried plasmid DNA (reconstitute with 100 ul of water).  |
| <b>Reconstitution Method:</b> | <ol style="list-style-type: none"> <li>1. Centrifuge at 5,000xg for 5min.</li> <li>2. Carefully open the tube and add 100ul of sterile water to dissolve the DNA.</li> <li>3. Close the tube and incubate for 10 minutes at room temperature.</li> <li>4. Briefly vortex the tube and then do a quick spin (less than 5000xg) to concentrate the liquid at the bottom.</li> <li>5. Store the suspended plasmid at -20°C. The DNA is stable for at least one year from date of shipping when stored at -20°C.</li> </ol> |
| <b>RefSeq:</b>                | <u><a href="#">NM_080288.2</a></u> , <u><a href="#">NP_525027.1</a></u>   |
| <b>RefSeq Size:</b>           | 5576 bp   |
| <b>RefSeq ORF:</b>            | 2184 bp   |
| <b>Locus ID:</b>              | 140580  |
| <b>UniProt ID:</b>            | <u><a href="#">Q8BPU7</a></u>   |
| <b>Cytogenetics:</b>          | 13 A2   |
| <b>MW:</b>                    | 83.9 kDa  |
| <b>Gene Summary:</b>          | Involved in cytoskeletal rearrangements required for phagocytosis of apoptotic cells and cell motility. Acts in association with DOCK1 and CRK. Was initially proposed to be required in complex with DOCK1 to activate Rac Rho small GTPases. May enhance the guanine nucleotide exchange factor (GEF) activity of DOCK1 (By similarity).[UniProtKB/Swiss-Prot Function]   |

**Product images:**


Circular map for MR220091