

## Product datasheet for **MR220087**

### Gpr139 (NM\_001024138) Mouse Tagged ORF Clone

#### Product data:

**Product Type:** Expression Plasmids  
**Product Name:** Gpr139 (NM\_001024138) Mouse Tagged ORF Clone  
**Tag:** Myc-DDK  
**Symbol:** Gpr139  
**Synonyms:** Gm495; GPRg1; PGR3  
**Mammalian Cell Selection:** Neomycin  
**Vector:** pCMV6-Entry (PS100001)  
**E. coli Selection:** Kanamycin (25 ug/mL)  
**ORF Nucleotide Sequence:** >MR220087 representing NM\_001024138  
Red=Cloning site Blue=ORF Green=Tags(s)

TTTTGTAATACGACTCACTATAGGGCGGCCGGAATTCGTCGACTGGATCCGGTACCGAGGAGATCTGCC  
GCC**CGCATCGCC**

ATGGAGCACACGCACGCCACCTCGCTGCGAATAGCTCGGCTTGC GGCTTAGGCTTCGTGCCGGTGGTCT  
ACTACAGTTCCTGCTGTGCCTCGGGTTACCAGCAAATATCTTGACAGTCATTATCCTCTCAACTGGT  
AGCCAGAAGACAGAAGTCCTCTACAATATCTTCTGGCACTTGCTGCTGACATCTGGTCCTCTTT  
TTCATTGCTTTGTGGATTTCTTGTTAGAAGATTTCAATTTGACCATGCAGATGCCTCTGATCCCTGACA  
AGATCATAGAAGTCTAGAGTTCTCTCCATCCCACTTCTATTTGGATTACGGTCCCCTAACGGTTGA  
CAGGTATATCGCTGTCTGTACCCCACTCAAATACCACACAGTTTCTACCCAGCCAGGACCCGAAAGTC  
ATTCTGAGTGTTACATAACTTGCTTCCTGACCAGTATCCCTACTACTGGTGGCCTAACATCTGGACCG  
AAGACTACATCAGCACCTCCATGCATCATGTCTTGCTGGATCCACTGTTTCACCGTGTACCTGGTGCC  
CTGCTCCATCTTCTTCACTTGAAGTCCATCATTTGTGTACAAGCTTAGGAGAAAGAGCAATTTCCGCCTC  
CGTGGCTATCCACAGGGAAGACCACTGCCATCTGTTTACCATTACCTCCATCTTCGCCACCCTCTGGG  
CCCCCGCATCATCATGATTCTCTACCACCTCTACGGAGACCCATCCAGAACCCTTGGCTGGTCCACAT  
CATGTTGGATGTTGCCAATGCTAGCCCTTCTGAACACAGCCATCAACTCTTTCTCTACTGCTTCATC  
AGCAAGCGCTTCGTACCATGGCAGCTGCCACACTCAAGGCCTTGTCAAGTGTGAGAAGCAGCCTGTAC  
AGTTCTATACCAACCATAACTTTTCCATAACAAGTAGTCCCTGGATCTCACCAGCAAACCTCACACTGCAT  
CAAGATGCTGGTGTACCAGTATGACAAACATGAAAGCCTATAAAAGTATCCCCG

**ACGCGT**ACGCGGCCGCTCGAGCAGAAACTCATCTCAGAAGAGGATCTGGCAGCAAATGATATCCTGGATT  
ACAAGGATGACGACGATAAGGTTTAA



[View online »](#)

**Protein Sequence:** >MR220087 representing NM\_001024138  
Red=Cloning site Green=Tags(s)

MEHTHAHLAANSSACGLGFVPVYYSFLLCLGLPANILTVIILSQLVARRQKSSYNYLLALAAADILVLF  
 FIVVDFLLEDFILTMQPLIPDKIIIEVLEFSSIHSTIWIIVPLTVDRYIAVCHPLKYHTVSYPARTRKV  
 ILSVYITCFLTSIPYYWPNWIWEDYISTSMHHVLVWIHCFTVYLVPCSIFFILNSIIVYKLRKSNFRL  
 RGYSTGKTTAILFTITSIFATLWAPRIIMILYHLYGAPIQNPWL VHIMLDVANMLALLNTAINFFLYCFI  
 SKRFRMTAAATLKALFKCQKQPVFYTNHNSITSSPWISPANSHCIKMLVYQYDKHGKPIKVS

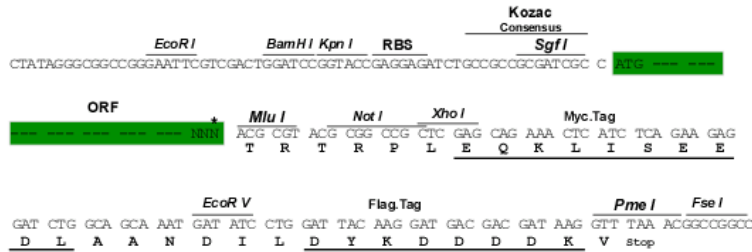
TRTRPLEQKLISEEDLAANDILDYKDDDDKV

**Chromatograms:** [https://cdn.origene.com/chromatograms/ja2070\\_g02.zip](https://cdn.origene.com/chromatograms/ja2070_g02.zip)

**Restriction Sites:** Sgfl-MluI

**Cloning Scheme:**

Cloning sites used for ORF Shutting:



\* The last codon before the Stop codon of the ORF

**ACCN:** NM\_001024138

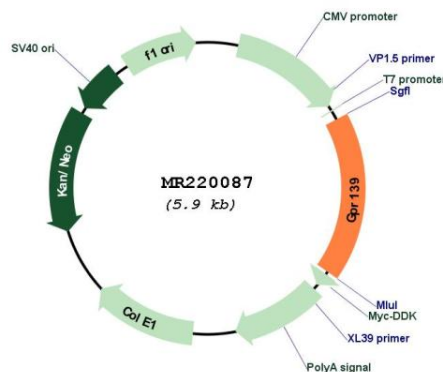
**ORF Size:** 1035 bp

**OTI Disclaimer:** Due to the inherent nature of this plasmid, standard methods to replicate additional amounts of DNA in E. coli are highly likely to result in mutations and/or rearrangements. Therefore, OriGene does not guarantee the capability to replicate this plasmid DNA. Additional amounts of DNA can be purchased from OriGene with batch-specific, full-sequence verification at a reduced cost. Please contact our customer care team at [custsupport@origene.com](mailto:custsupport@origene.com) or by calling 301.340.3188 option 3 for pricing and delivery.

The molecular sequence of this clone aligns with the gene accession number as a point of reference only. However, individual transcript sequences of the same gene can differ through naturally occurring variations (e.g. polymorphisms), each with its own valid existence. This clone is substantially in agreement with the reference, but a complete review of all prevailing variants is recommended prior to use. [More info](#)

<b>OTI Annotation:</b>	This clone was engineered to express the complete ORF with an expression tag. Expression varies depending on the nature of the gene.
<b>Components:</b>	The ORF clone is ion-exchange column purified and shipped in a 2D barcoded Matrix tube containing 10ug of transfection-ready, dried plasmid DNA (reconstitute with 100 ul of water).
<b>Reconstitution Method:</b>	<ol style="list-style-type: none"> <li>1. Centrifuge at 5,000xg for 5min.</li> <li>2. Carefully open the tube and add 100ul of sterile water to dissolve the DNA.</li> <li>3. Close the tube and incubate for 10 minutes at room temperature.</li> <li>4. Briefly vortex the tube and then do a quick spin (less than 5000xg) to concentrate the liquid at the bottom.</li> <li>5. Store the suspended plasmid at -20°C. The DNA is stable for at least one year from date of shipping when stored at -20°C.</li> </ol>
<b>RefSeq:</b>	<a href="#">NM_001024138.2</a>
<b>RefSeq Size:</b>	1038 bp
<b>RefSeq ORF:</b>	1038 bp
<b>Locus ID:</b>	209776
<b>UniProt ID:</b>	<a href="#">Q80UC8</a>
<b>Cytogenetics:</b>	7 F2
<b>MW:</b>	40.2 kDa
<b>Gene Summary:</b>	Orphan receptor. Seems to act through a G(q/11)-mediated pathway.[UniProtKB/Swiss-Prot Function]

### Product images:



Circular map for MR220087