

Product datasheet for **MR220064**

Slc14a2 (NM_207651) Mouse Tagged ORF Clone

Product data:

Product Type:	Expression Plasmids
Product Name:	Slc14a2 (NM_207651) Mouse Tagged ORF Clone
Tag:	Myc-DDK
Symbol:	Slc14a2
Synonyms:	UT-A1; UT-A3
Mammalian Cell Selection:	Neomycin
Vector:	pCMV6-Entry (PS100001)
E. coli Selection:	Kanamycin (25 ug/mL)



[View online »](#)

ORF Nucleotide
Sequence:

>MR220064 representing NM_207651
 Red=Cloning site Blue=ORF Green=Tags(s)

TTTTGTAATACGACTCACTATAGGGCGGCCGGGAATTCGTCGACTGGATCCGGTACCGAGGAGATCTGCC
 GCC**CGGATCGCC**

ATGAGTGACCACCACCCCTGAAGGAGATGCTGACAGCAACAGCAGCCCTCTTTGCCAGAGCCTCTTT
 CCAGCAGATACAAATTGTATGAGTCAGAGCTAAGCAGCCCTACCTGGCCTTCAAGCTCCCAGGATACACA
 CCCAGCCCTTCCCTGCTGGAAATGCCGAAGAAAAGGATCTCCGCTCATCAGATGAAGACAGCCACATA
 GTGAAGATTGAAAAACCAATGAGAGGAATAAAAGGAGAGAAAAGTGAGGTGTCCCGCCGGCTTCTGCGG
 GCCGGGGAGGCTTCAAGCCTTCCAAGCCGTGAGCTATCTCACTGGCGACATGAAGGAATGCAAGAAGT
 GCTGAAAGATAAGCCCTGGTCTACAGTTCCTAGACTGGGTCTTGGGGAGCAGCTCAGGTGATGTTT
 GTCAACAACCCCATAGTGGGCTCATCATCTTCAAGGGCTCCTAATCCAGAATCCCTGGTGACGATTG
 CTGGGACACTGGGACAGTGGCTTCAACCTTGGCTGCCCTTGCCTAAGCCAGGACAGGTGAGCCATCGC
 CTCGGACTCCATGGCTACAACGGGATGCTGGTGGGACTGCTGATGGCTGTCTTCTCGGAGAAGTTAGAC
 TACTACTGGTGGCTTCTGTTTCCCTGTGACCTTACATCCATGGCCTGCCCATATTTCTAGTGCCTTGA
 GTACCATCTTCGCCAAGTGGGACCTGCCGCTTTCACACTGCCCTTCAACATTGCCTAACACTGTACCT
 GGCAGTACGGGCCACTACAACCTTTTCTTCCCACCAGCTCATCAAGCCTGCGTCTGCAGCTCCCAAT
 ATCACCTGGACAGAGATTGAAATGCCTTGTGTTACAAACCATCCCTGTTGGGGTGGCCAGGTCTACG
 GCTGTGACAACCCCTGGACAGGTGGCATGATCCTGGTGGCTCTGTTTATCTCTCCCACTCATCTGCTT
 ACATGCAGCCATAGGGTCAATCGTGGGGCTGTAGCAGCATTGACTGTGGCCACTCCCTTGGAGACGATC
 TACCTGGGCCTTTGGAGCTACAACCTGTGCTCTCCTGCATTGCCATTGGCGCATGTTCTACGCACTCA
 CCTGGCAGACACACCTGCTGGCACTTGTCTGTGCCCTGTCTGTGCATACATGGGAGCTGCCCTCCAA
 TACAATGGCAGTGGTTGGCGTGCCTCAGGCACCTGGGCCTTCTGTCTCTCCACCCTCACCTTCTCCTC
 CTCACAAGCAACAACACTGGCATCTACAAGCTCCCACTCAGCAAAGTCACTACCCGAGGCCAACCCGCA
 TCTACTTCTGACAGTGAGACGCAGTGAAGAGGAGAAGTCCCCAATGGTGGCAGTGGAGAGCAGTCACA
 CGGATCAGGCCAGTGAAGGCAGAAAGAGAGCTCTGAGACCGTGTCTCCAGGGCTAGGAGTGTGTTCCAC
 ATCGAGTGGTATCCATCCGGAGGAGGAGCAAAGTGTGTTGAAAAGGCCAACCAAGAGAGGCCAAACCA
 AAGAGCCACTGCCCTGCCGTATCGGAAGCCACAGTGGAGCTCTTTGACCTGGACACCATGGAGGAGAG
 CACTGAGATAAAGGTGGAAGCCAACACAGCCAGGACTTCTGGATTGAGAGCTCCATGGTCGCTGGGGG
 AAGAGAGTCAAGGCCCTCAGCTACATCACAGGAGAGATGAAGGAATGCGGCGAGGGACTTAAAGATA
 AATCTCCAGTGTCCAGTTTCTGACTGGGTGCTCCGGGGCATGTCTCAGGTGATGTTTGTAAACAACCC
 TCTCAGCGCATCCTCATCGTCTTGGCCTTCTCGTGCAGAATCCCTGGTGGGCTATCTGGGTTGCTTG
 GCACTGTGATGTCACCTGACTGCCCTCATCCTGAGCCAGGACAAGTCAAGCATTGACAGCAGGACTCC
 ATGGCTACAATGGGGTGTGTTGGGGCTCCTGATGGCCGTGTTCTCGGACAAGGGCAATTAATACTGGT
 GCTGCTGCTTCTGTGATGTCATGTCATGACTTGGCCCATCTTTCCAGTGCCTGAGCACCGTCTTC
 AGCAAGTGGGACCTCCAGTCTTCAACTGCCCTTCAACATCGCCGTGACCCTGTACCTGGCAGCGACGG
 GCCACCACAATCTTCTTCCCCAGCAGCTGTACAGCCTACAACCACTCCACCAACATCACCTGGTC
 AGATATCCAAGTGTCTTTGCTTCTGAGAGCCATCCCGTTGGAATCGGCCAAGTGTACGGGTGTGACAAC
 CCTGGACTGGAGGCATCTTCTGGTCTGCTGTTTCACTCTTCCGCTCTCATTGCTTGCATGCTGCCA
 TTGGATCCACCATAGGATGTTAGCAGCACTCAGCATTGCCACACCATTTGACTCCATCTACTTCGGCCT
 GTGTGGCTTCAACAGCACCCCTGGCCTGCATCGCCATTGGTGGCATGTTCTACGTCACTCACCTGGCAGAC
 CACCTGCTCGCCATTGCCTGTGCCCTGTTTGCAGCCTACCTGGGTGCTGCCCTGGCCAACATGCTGTCTG
 TGTGTTGGATTACCACCTGCACCTGGCCCTTCTGCCTCTCGGCGCTCACCTTCTCTCTGACAAGCAA
 CAACCTGCCATCTATAAGCTGCCTCTCAGCAAAGTCACTACCCAGAGGCCAACCCGATCTACTTCTG
 TCCAGGAAAAAACAGAAGGCATCAACGATAACTAAGTACCAGGCCTACGACGTCTCC

ACGCGTACGCGGCCGCTCGAGCAGAAACTCATCTCAGAAGAGGATCTGGCAGCAAATGATATCCTGGATT
 ACAAGGATGACGACGATAAGGTTTAA

Protein Sequence: >MR220064 representing NM_207651
 Red=Cloning site Green=Tags(s)

MSDHHPLKEMSDSNSSPLLPEPLSSRYKLYESELSSPTWPSSSQDTHPALP LLEMPEEKDLRSSDEDSHI
 VKIEKPNERNKRRESEVSRRASAGRGGFSLFQAVSYLTGDMKECKNWLKDKPLVLQFLDWVLRGAAQVMF
 VNNPISGLIIFIGLLIQNPWWTIAGTLGTVASTLAALALSQDRSAIASGLHGYNGMLVGLLMAVFSKLD
 YYWLLFPVFTTSMACPIISSALSTIFAKWDLPVFTLPFNIALTLYLAATGHYNLFPTTLIKPASAAPN
 ITWTEIEMPLLLQTIIPVGVGVQVYGCNPNWTGGMILVALFISSPLICLHAAIGSIVGLLAALT VATPFETI
 YLGLWSYNCVLSCIAIGGMFYALTWQTHLLALVLCALFCAYMGAALSNTMAVVGVPSTWAFCLSTLTFLL
 LTSNNTGIYKPLSKVTYPEANRIYFLTVRRSEEEKSPNGGSGEQSHGSGQWKAEESSVTPRRRSV FH
 IEWSSIRRRSKVFGKGEHQERQTKPELPCPYRKPTVELFDLDTMEESTEIKVEANTARTSWIQSSMVAGG
 KRYSKALSYITGEMKECGEGLKDKSPVFQFLDWVLRGMSQVMFVNNPLSGILIVLGLFVQNPWWAILGCL
 GTVMSTLTALILSQDKSAIAAGLHGYNGVLVGLLMAVFSKGNYYWLLLPVIVMSMTCPISSALSTVF
 SKWDLPVFTLPFNIAVTLYLAATGHHNLFPTTLLQPTTTPPNITWSDIQVSLLLRAIPVIGIQVYGCN
 PWTGGIFLVALFISSPLICLHAAIGSTIGMLAALSIAATPFDSIYFGLCGFNSTLACIAIGGMFYVITWQT
 HLLAIACALFAAYLGAALANMLSVFGLPPCTWPFCL SALTFLLLTNNPAIYKPLSKVTYPEANRIYFL
 SQEKNRRASTITKYQAYDVS

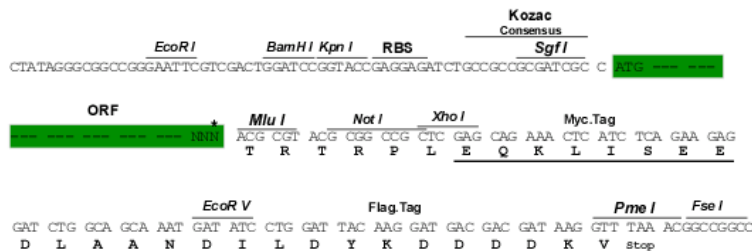
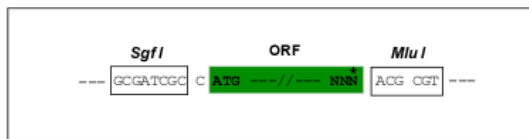
TRTRPLEQKLISEEDLAANDILDYKDDDDKV

Chromatograms: https://cdn.origene.com/chromatograms/mm9012_d08.zip

Restriction Sites: SgfI-MluI

Cloning Scheme:

Cloning sites used for ORF Shuttling:



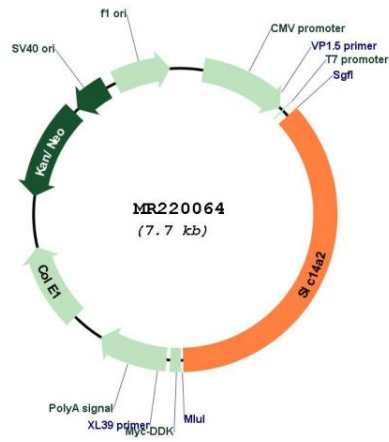
* The last codon before the Stop codon of the ORF

ACCN: NM_207651

ORF Size: 2790 bp

OTI Disclaimer:	The molecular sequence of this clone aligns with the gene accession number as a point of reference only. However, individual transcript sequences of the same gene can differ through naturally occurring variations (e.g. polymorphisms), each with its own valid existence. This clone is substantially in agreement with the reference, but a complete review of all prevailing variants is recommended prior to use. More info
OTI Annotation:	This clone was engineered to express the complete ORF with an expression tag. Expression varies depending on the nature of the gene.
Components:	The ORF clone is ion-exchange column purified and shipped in a 2D barcoded Matrix tube containing 10ug of transfection-ready, dried plasmid DNA (reconstitute with 100 ul of water).
Reconstitution Method:	<ol style="list-style-type: none">1. Centrifuge at 5,000xg for 5min.2. Carefully open the tube and add 100ul of sterile water to dissolve the DNA.3. Close the tube and incubate for 10 minutes at room temperature.4. Briefly vortex the tube and then do a quick spin (less than 5000xg) to concentrate the liquid at the bottom.5. Store the suspended plasmid at -20°C. The DNA is stable for at least one year from date of shipping when stored at -20°C.
RefSeq:	NM_207651.3 , NP_997534.2
RefSeq Size:	4045 bp
RefSeq ORF:	2793 bp
Locus ID:	27411
Cytogenetics:	18 E3
MW:	102.6 kDa
Gene Summary:	Specialized low-affinity vasopressin-regulated urea transporter. Mediates rapid transepithelial urea transport across the inner medullary collecting duct and plays a major role in the urinary concentrating mechanism. Vasopressin regulates urea transport by increasing isoform A1 accumulation in the plasma membrane and/or phosphorylation of isoform A1 (By similarity). [UniProtKB/Swiss-Prot Function]

Product images:



Circular map for MR220064