

Product datasheet for **MR220056**

Kcnd1 (NM_008423) Mouse Tagged ORF Clone

Product data:

Product Type:	Expression Plasmids
Product Name:	Kcnd1 (NM_008423) Mouse Tagged ORF Clone
Tag:	Myc-DDK
Symbol:	Kcnd1
Synonyms:	1110037K09Rik; Kca2-; Kca2-1; Kv4.; Kv4.1; mSh; mShal1; S; Shal; Shal1
Mammalian Cell Selection:	Neomycin
Vector:	pCMV6-Entry (PS100001)
E. coli Selection:	Kanamycin (25 ug/mL)



[View online »](#)

**ORF Nucleotide
Sequence:**

>MR220056 representing NM_008423
 Red=Cloning site Blue=ORF Green=Tags(s)

TTTTGTAATACGACTCACTATAGGGCGGCCGGAATTCGTGACTGGATCCGGTACCGAGGAGATCTGCC
 GCC**CGATCGCC**

ATGGCGCAGGTGTGCCACATGGCTACCATTTGCAAGGGCCGACAGTGGCTGGCTGCCCTTAGCCC
 AGCAGCCCTACCCCTGCACCGAGGTGAAGGCATCCGAGGGGATGAGGTTCTGGTGGTGAATGTGAG
 TGGTCGGCGCTTTGAGACCTGAAAAACACACTGGATCGTACCCAGACACATTGCTGGCAGCTCGGAG
 AAGGAATCTTCTATGATGCTGAATCTGGCAGTACTTCTTTGATCGTGACCCAGACATGTTCCGGCAGC
 TGCTGAACTTTTATCGCACTGGCCGGCTGCACTGCCCCAGGCAGGAGTGCATCCAGGCCTTTGATGAGGA
 GCTGGCCTTCTATGGCTTGGTCCAGAGCTGGTTGGTACTGCTGTCTTGAAGAGTACAGGGACCGTAAG
 AAGGAAAACGCAGAGCGCTGGCAGAAGATGAGGAGGCTGAGCAGGCCGGGAAGTCCAGCCCTCCAG
 CAGGCAGCTCCCTGCGACAGCGACTCTGGAGGGCCTTTGAGAACCCACACGAGCACTGCAGCCCTGGT
 TTTCTACTATGTACTGGCTTCTCATAGCTGTGTCAGTCATTGCCAACGTCGTGGAGACCATCCCATGT
 CGTGGTACCCACGATGGCCCTCAAAGAGCAGTCGTGTGGTGACCGCTCCCTACAGCCTTTTTCTGTA
 TGGACACAGCCTGTGACTCATATTCACAGGGGAGTACCTGCTGCGGCTCTTCGACGCCCCAGCCGTTG
 TCGCTTCTCGGAGTGTGATGAGCCTTATCGATGTGGTGGCCATCCTACCCTACTATATTGGGCTGTT
 GTGCCAAGAATGATGATGTCTCTGGTGCCCTTTGTACCCTCCGTGTGTTCCGGGCTTCCGAATCTTCA
 AGTTCTCCAGGCACTCGCAGGGCCTGAGGATTCTGGGCTACACCCCTCAAGAGCTGTGCCTCTGAGCTAGG
 CTTTCTCCTCTTTCCCTCACCATGGCCATCATCATCTTTGCCACTGTGATGTTCTATGCTGAGAAGGGC
 ACGAGCAAGACCAACTTCACAAGCATCCCTGCTGCCTTCTGGTATACCATTGTCACCATGACCACACTTG
 GGATGGAGATATGGTACCTAGCACCATTCAGGCAAAAATTTTTGGGTCCATCTGCTCACTTAGCGGTGT
 CTTGGTCATTGCCCTTGCCAGTCATTGTATCCAACCTTCAGCCGCATCTACCACCAGAACCAGCGT
 GCTGACAAGCGCCGGGCACAGCAGAAAAGTGCAGCCTGGCAAGAATCCGTTTGGCAAAGAGTGTACCACCA
 ATGCCCTTCTGCAGTATAAGCAAAATGGGGCCTCGAGGACAGTGGCAGTGGCGACGGACAAATGCTGTG
 CGTTAGGAGCCGCTCTGCTTTTGAACAACAGCATCACCATCTGCTGCATTGTCTGGAGAAGACTACGTGT
 CACGAGTTCACAGACGAGCTAATTTTCAGTGAGGCCCTTGGAGCAGTCTCACTGGGTGGTTCGACCAGCC
 GCAGTACCTCAGTATCATCCAACCAATGGGGCCTGGGAGCCTGTTCTCATCCTGCTGCTCTCGAAGGGT
 CAATCGCAGAGCCATCCGCCTTGCCAACCTACTGCCTCTGTGAGCCGTGGCAGCATGCAGGAGCTAGAC
 AACTAGCAGGTCTTCGGAGGAGCCCTGCCCTCAAACCCGCTCAAGCCTCAATGCCAAGCCCCACGACA
 GCCTTGACCTGAACTGTGACAGCCGGGACTTCGTGGCCGCATCATCAGTATCCCCACCCCTGCCAA
 CAGCCAGATGAAAGTCAACCTTCTCCCTAGTGGTGGTGGCGGAGTGGTGGCACACCCAACACCACT
 CTCAGGAACTCCAGCTTGGGTACTCCGTGCCTCCTCCCTGAGACTGTCAAGATCTCTTCCCTG

ACGCGTACGCGGCCGCTCGAGCAGAAACTCATCTCAGAAGAGGATCTGGCAGCAATGATATCCTGGATT
 ACAAGGATGACGACGATAAGGTTTAA

Protein Sequence: >MR220056 representing NM_008423
Red=Cloning site Green=Tags(s)

MAAGVATWLPFARAAAVGWLPLAQQPLPPAPEVKASRGDEVLVVNVSGRRFETWKNTLDRYPDTLLGSSE
 KEFFFYDAESGEYFFDRDPDMFRHVLNFYRTGRLHCPRQECIQAFDEELAFYGLVPELVGDCCL E EYRDRK
 KENAERLAEDEEAEQAGEGPALPAGSSLRQRLWRAFENPHTSTAALVFYVYTGFFIAVSVIANVVETIPC
 RGTPRWPSKEQSCGDRFPTAFFCMDTACVLI FTGEYLLRLFAAPSRRCFLRSVMSLIDVVAILPYYIGLF
 VPKNDDVSGAFVTLRVFRVFRIFKFSRHSQGLRILGYTLKSCASELGFLFSLTMAIIIFATVMFYAEKG
 TSKTNFTSIPAAFWYITVTMTTLGYGDMVPSTIAGKIFGSICSLSGVLVIALPVPVIVSNFSRIYHQNR
 ADKRRRAQQKVRLARIRLAKSGTTNAFLQYKQNGLEDGSGDQMLCVRSRSAFEQQHHLLHCLEKTTCC
 HEFTDELTFSEALGAVSLGGRTSRSTSVSSQPMGPGSLFSSCCSRRVNRRAIRLANSTASVSRGSMQELD
 TLAGLRRSPAPQTRSSLNAKPHDSL DLNCDSRDFVAIIISIPTPANTPDESQPSPPSGGGGSGGTPNTT
 LRNSSLGTPCLLPETVKISSL

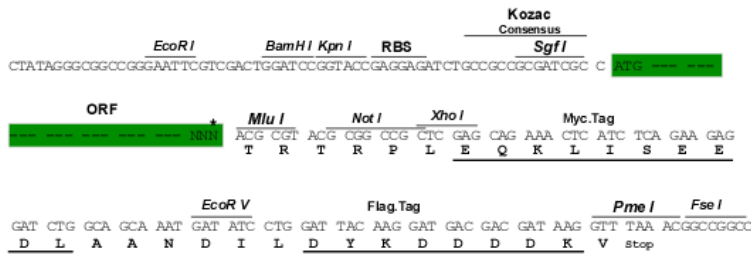
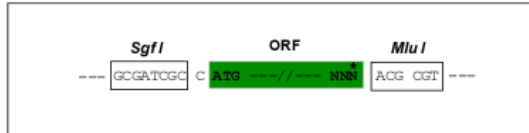
TRTRPLEQKLI SEEDLAANDILDYKDDDDKV

Chromatograms: https://cdn.origene.com/chromatograms/mm9005_a04.zip

Restriction Sites: Sgfl-MluI

Cloning Scheme:

Cloning sites used for ORF Shuttling:



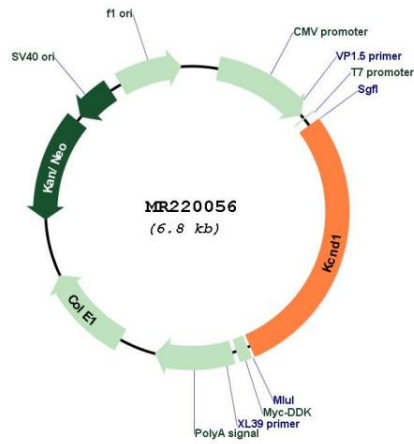
* The last codon before the Stop codon of the ORF

ACCN: NM_008423

ORF Size: 1953 bp

OTI Disclaimer:	<p>Due to the inherent nature of this plasmid, standard methods to replicate additional amounts of DNA in E. coli are highly likely to result in mutations and/or rearrangements. Therefore, OriGene does not guarantee the capability to replicate this plasmid DNA. Additional amounts of DNA can be purchased from OriGene with batch-specific, full-sequence verification at a reduced cost. Please contact our customer care team at custsupport@origene.com or by calling 301.340.3188 option 3 for pricing and delivery.</p> <p>The molecular sequence of this clone aligns with the gene accession number as a point of reference only. However, individual transcript sequences of the same gene can differ through naturally occurring variations (e.g. polymorphisms), each with its own valid existence. This clone is substantially in agreement with the reference, but a complete review of all prevailing variants is recommended prior to use. More info</p>
OTI Annotation:	This clone was engineered to express the complete ORF with an expression tag. Expression varies depending on the nature of the gene.
Components:	The ORF clone is ion-exchange column purified and shipped in a 2D barcoded Matrix tube containing 10ug of transfection-ready, dried plasmid DNA (reconstitute with 100 ul of water).
Reconstitution Method:	<ol style="list-style-type: none"> 1. Centrifuge at 5,000xg for 5min. 2. Carefully open the tube and add 100ul of sterile water to dissolve the DNA. 3. Close the tube and incubate for 10 minutes at room temperature. 4. Briefly vortex the tube and then do a quick spin (less than 5000xg) to concentrate the liquid at the bottom. 5. Store the suspended plasmid at -20°C. The DNA is stable for at least one year from date of shipping when stored at -20°C.
RefSeq:	NM_008423.2 , NP_032449.1
RefSeq Size:	1956 bp
RefSeq ORF:	1956 bp
Locus ID:	16506
UniProt ID:	Q03719
Cytogenetics:	X 3.53 cM
MW:	72.1 kDa
Gene Summary:	This gene encodes a multipass transmembrane protein that comprises a subunit of voltage-gated rapidly inactivating A-type potassium channels. [provided by RefSeq, May 2015]

Product images:



Circular map for MR220056