

Product datasheet for MR220029

Vwa5b1 (NM_029401) Mouse Tagged ORF Clone

Product data:

Product Type:	Expression Plasmids
Product Name:	Vwa5b1 (NM_029401) Mouse Tagged ORF Clone
Tag:	Myc-DDK
Symbol:	Vwa5b1
Synonyms:	4931403E03Rik
Mammalian Cell Selection:	Neomycin
Vector:	pCMV6-Entry (PS100001)
E. coli Selection:	Kanamycin (25 ug/mL)
ORF Nucleotide Sequence:	>MR220029 ORF sequence Red=Cloning site Blue=ORF Green=Tags(s)

TTTTGTAATACGACTCACTATAGGGCGGCCGGAATTCGTCGACTGGATCCGGTACCGAGGAGATCTGCC
GCC**CGATCGCC**

ATGCTGGCCTGCTGAACTGCCTCACAGGGGCAGCCCTGCCTCTCATGGAATCCGATGTCACCTCCTATG
TCAGTGGCTATGCCCTGGGCTGACAGCCTCCCTCACCTACGGCAACCTGGAGGCCAGCCCTTTCAAGG
TCTCTTCGTGTATCCAATAGACGAGTATAGCACAGTGGTTGGCTTTGAAGCAGTCATTGCTGACCGTGT
GTGACCATACAGCTCAGAGACAAAGCCAAGCTGGACAGAAGCCACTTGGATATCCAACCCGCCACTGTCA
CAGGGAACCTTCCGGAAGAGGAGAGTCCCATCGCACCAGGAAAGGTGACCTTGGATGAGGATCTGGAGCG
GGTTCGTTCGTGGTCAACCTGGGGACCATGGCCCATGGAGAATGTCACCGTCTTCATCAGCACCTCC
TCCGAACTCCCCACACTGCCAGCGGGGCTGTGAGGGTCTTCTGCCGGCCATCTGCGCCCCGACCGTGC
CTCCATCTGTACCCACAGGTTTGGCTCCTCCAGCCCACAGCCACAAGGCAAAGACCCACACTGCTTCGG
CACCCAGACCAAGGACTCCTATAACAGGCTGTGTCTGGCCACTCTCCTGGACACAAGGTGACCAACCCA
ATGGAATATGAATCAAATTTAGCTGGAATCCGTGGGCCCTGTCTGCTCGCAGGGGTGGAGAGTCCCA
CTCATGAAATCCGAGCAGACGCAGCCCCATCGGCACACTCCGCCAAGAGCATCATCATCAGTTGGCCAA
AAAACATACCTTTGACCGGCCAGTGGAGATTCTTCTCCACCCTAGCGAGCCTCACATGCCACAGTCCCTG
GTGGAAAAGGGACATGACCCTGGGGGAATATGACCAGCATGAAAGGAAAAGCAGATTTTCATTCGGG
GGACAAAAGAGGACAACAGCGCGGAGCGGAAGACAGAAGTCATCCGGAAGCGTCTCCACAAGACATTCC
CCACCACTCAGTCATCATGCTCAACTTCTGTCCTGACCTCCAGTCTGTGACGCCAACCCGAGGAAAGCC
CACGGGGAGTTTATCTTCTCATTGATAGGAGTAACAGCATGAGCAAGACCAACATCCAGTGCATCAAGG
AGGCCATGCTGGTGGCCCTCAAGAGCCTCATGCCAGCGTCTTCTCAACATCATTGGTTTTGGATCCAC
ATTTAAGCAGTCTTTGCTTCCAGTCGGATCTACAATGAGGAGAAGTGGACCATGGCATGTGACTGCATC
CAGAGAATGCAGGCTGATATGGGAGGCACCAACATGCTCTCCCCCTCAAGTGGGCTCTGCGGCAGCCAC
TGCGCCGGGTACCCACGGCTCCTCTTCTGATCAGGATGGGTCGGTGAACAACAGGGAAGGTTCT
GGAGCTGGTACGGAATCACGCCTCTTACCAGGTGCTATAGCTTGAATTGGACCCACGGTCTGCTAC



[View online »](#)

CGACTGGTCAAAGGGCTGGCATCTGTATCCAAGGGCAGCGCAGAGTTCCTGATGGAGGGGAACGGCTGC
AACCAAAGATGGTCAAATCCTTGAAGAAGGCCATGGCGCCAGTGTGAGTGACGTGACTGTGGAGTGGGT
CTTTCCCGAGACCACGGAGGCCCTGATCTCTCCTGTGACAGCAGCTCCCTTTTCCCTGGGGAACGGCTG
ATGGGATATGGCATTGTGTGTGATGCCTCCTTGTACATTTCCAATTCCAGATCTGACAAAAGGGCAAAGT
ATGGCATGCTGCACACTCAGGAGTCCAGCAGCTCCGTCTTCTACCCCTCACAGGACGAGGGACTCAGCCC
AGGCAGTGGAACTGTGCCAAGAACGTCAACCAGGGGCAGACCAAAGATGCCATCCATGCAATGGAGAC
TCCCCACCCATCACGGTCTGGATGTCTCCCGCGGGAGAGCATAACAGCACTAACAGATCTCCAGCC
ACAAGACTTGCCCAAGGGCTACCACAGCCAGCGACCCACCGGGACTGCCAGGAGATACCCACTGCGAAA
AGCCAAGGTGCAAGACCTTGCCAGTGAGAGCGACTGGGAGAGCCAGAAGTGGCAGACTGATCTGCAGACC
CTACTTAACGAAGGCCATAACCTGAGCCAGGGCCCAAACCTTCATGGCCAGGAGCCCGCAGGCCTTCCC
TACTGCCTCAAGGCTGCCAGCTCATGCGCTTCTTTGACCAGAAGCCCAGGCCTGGGGCCCTGTGAGAGA
GCTGGATTGTGGTGCCAGCCGACGTCTGCCCTAACAGCCAAAGCTCTGAAGATCTGGCCATAGAGCCA
GCCCATGTCTTCAACCTTTGAACGGGAGACATCCTTAGACTTGGAGCCATGGCTGAGTCCGAGGAGC
AAGCCAATCCCTGCAGGACTGCCACTCCAAGCCCTGTGGTGGCAAGGCTTTGGTCAAAGGCCTGTGCGC
CAACCAACGCATGCAGTGGGAAGTGAGCTTCGAGCTGGAGCCTCCAGCCCTGAAGAGGGGGACACACAG
AAGCTGACATGTGGAGTGAGACTTTCCACCACCTGGCGGCCCGCCATCATCCGAGAATTCGAGCATC
TGGCAGAGCGCGAGGACGAGATCGAGCTGGGGTCCAATCGCCGATACCAGGTGAACGCCGTGCACACCAG
CAAGGCCTGCAGCGTGATCAGCAAATACACGGCCTTTGTGCCTGTGGACATAAACAAGAGGCAGTACCTG
CCCACGGTCGTAAGTACCCCAACTCTGGTGCCATGCTCAGCTTCCGGAACCTGACTCGACAGTGGGGGG
GCTCTTCGGCTGGCCTGGGAAGGCCAGTCTATGCTCAGAGAACACTCCTCAGCCCGAGGAGACAGCAA
ATTCCAGACTTAGCCCTACAAGACAGCCCTACTTCAACCTTCAATAAAACCCCATCCCCGGCCATGAG
AAGCAAACCACGGCAGAAGGTCCCCCTCAAACCTGTCCGCCAGCGCTCCATCCTCCATGAAGGCCACTG
AGACTCTCTTTGGATCTAAGTTGAATCTCAACAAATCCAGGCTGCTGACCCGAGCTACCAAAGGCTTCT
CAGCAAATCGTTGCCCAAGGCTTCAGAGGCAACCCAGGCAGCCAGAGCTCTGACTACATACCACTGGTG
TCTCTGCAGCTGGCCTCGGGAGCCTTTTTGCTCAATGAAGCCTTCTGCACGACCATCCAATCCCCATGG
AGAAACTCAAGTGGACCTCACCTTCTCCTGCCTCCGAATGTCCCTCGTACCCGCGCAGGATCTGAA
GACCCAGAGTCCACAGGACTGCACCAGTCTCTCCTTCCACCCCATCCTGTGACGGCATCTCCCTAAAG
TCTGAAGAGAGCTCAGACCAGGAGTCCAATGCAATGCTGGAGCACATGGGAAAGCTGTGGCCACGGTGG
TGGCGTGGCGTGGCTGGAACACAGCTCAGCTAACTACATCATTGAGTGGGAGCTGGTGGCTGCCAAGGC
CAGCTCCTGGGTGGAGAAGCAGAAAGTTCCTGAGGGCCGCACCTTGAGCACTCTCAAGAACACTGCTCGC
CAACTCTTGTGCTTCTGCGACTGGGATGAGAAATTAGAGTCAATATGCTCTGTTACAACCCCAATT
ATGTG

ACGCGTACGCGGCCGCTCGAGCAGAAACTCATCTCAGAAGAGGATCTGGCAGCAAATGATATCCTGGATT
ACAAGGATGACGACGATAAGGTTTAA

Protein Sequence:

>MR220029 protein sequence
 Red=Cloning site Green=Tags(s)

MPGLLNCLTGAALPLMESDVTSYVSGYALGLTASLTYGNLEAQPFGFLVYYPIDEYSTVVGFEAVIADRV
 VTIQLRDKAKLDRSHLDIQPATVTGNFPEEESPIAPGKVTLDEDLERVLFVNLGTIAPMENVTFIST
 SELPTLPSGAVRVLPAICAPTVPSPCTHRFGSSSPQPQKDPHCFGTQTKDSYNRLCLATLLDVKVTNP
 MEYEFKQLEIRGPCLLAGVESPTHEIRADAAPSAHSAKSIIITLAKKHTFDRPVEILLHPSEPHMPHVL
 VEKGMRTLGEYDQHLKGGKADFIRGTTKDNDAERKTEVIRKRLHKDIPHHSVIMLNFPCDLQSVQPNRKA
 HGEFIFLIDRSNSMKTNIQCIKEAMLVALKSLMPACFFNIIGFGSTFKAVFASSRIYNEENLTMACDCI
 QRMQADMGGTNMLSPLKWLVRQPLRRGHPRLFLITDGSVNNTGKVLVLRNHASSTRCSYFGIGPTVCY
 RLVKGLASVSKGSAEFLMEGERLQPKMVKSLKKAMAPVLSVTVVEWVFPETTEALISPVSTSSLFPGERL
 MGYGIVCDASLYISNSRSDKRRKYGMLHTQESSSSVFYPSQDEGLSPGSGNCAKNVQGGTKDAHPCNGD
 SPTHHGLDVSRRRRAYSTNQISSHKTCPRATTASDPTGTARRYPLRKAKVQDLASESDWESQKWQDLQT
 LLNEGHNL SQGPKLHGPARRPSLLPQGCQLMRFFDQKPAWGPVREDCGASRTSAPNSQSSDLAIEP
 AHCPSTFERETSLLDLEPMAESEEQANPCRTATPSVVGKALVKGLCANQRMQWEVSFELEPPALKRGDTQ
 NADMWSETFHHLAARAIIREFEHLAERDEIEELGSNRRYQVNAVHTSKACSVISKYTAFAVVPDINKRQYL
 PTVVKYPNSGAMLSFRNLTRQWGGSSAGLGRPQSMLEHSSAAGDSKFTLALQDSPTSTFNKTPSPGHE
 KQTTAEGPPQNLASAPSSMKATETLFGSKLNLNKSRLLTRATKGFLSKSLPKASEATPGSQSSDYIPLV
 SLQLASGAFLLNEAFCTTIQIPMEKWKWTSFSCLRMSLVTRRQDLKTSQSPQDCTSLSSSPPSCDGI
 SEESSDQESNAMLEHMGKLWATVVALAWLEHSSANYIIIEWELVAAKASSWVEKQKVP EGRTLSTLKN
 TARQLFVLLRHWDEKLEFNMLCYNPNVY

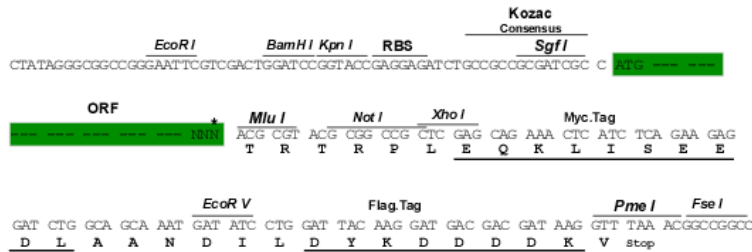
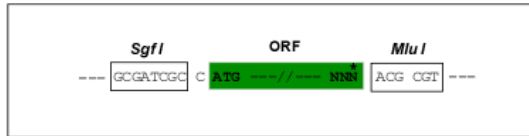
TRTRPLEQKLISEEDLAANDILDYKDDDDKV

Restriction Sites:

Sgfl-MluI

Cloning Scheme:

Cloning sites used for ORF Shuttling:



* The last codon before the Stop codon of the ORF

ACCN:

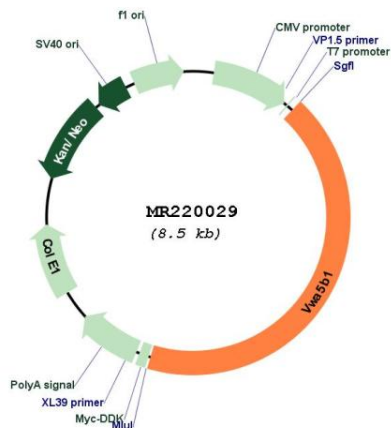
NM_029401

ORF Size:

3648 bp

OTI Disclaimer:	The molecular sequence of this clone aligns with the gene accession number as a point of reference only. However, individual transcript sequences of the same gene can differ through naturally occurring variations (e.g. polymorphisms), each with its own valid existence. This clone is substantially in agreement with the reference, but a complete review of all prevailing variants is recommended prior to use. More info
OTI Annotation:	This clone was engineered to express the complete ORF with an expression tag. Expression varies depending on the nature of the gene.
Components:	The ORF clone is ion-exchange column purified and shipped in a 2D barcoded Matrix tube containing 10ug of transfection-ready, dried plasmid DNA (reconstitute with 100 ul of water).
Reconstitution Method:	<ol style="list-style-type: none"> 1. Centrifuge at 5,000xg for 5min. 2. Carefully open the tube and add 100ul of sterile water to dissolve the DNA. 3. Close the tube and incubate for 10 minutes at room temperature. 4. Briefly vortex the tube and then do a quick spin (less than 5000xg) to concentrate the liquid at the bottom. 5. Store the suspended plasmid at -20°C. The DNA is stable for at least one year from date of shipping when stored at -20°C.
RefSeq:	<u>NM_029401.1, NP_083677.1</u>
RefSeq Size:	3857 bp
RefSeq ORF:	3648 bp
Locus ID:	75718
UniProt ID:	<u>A9Z1V5</u>
Cytogenetics:	4 D3
MW:	134 kDa

Product images:



Circular map for MR220029