

Product datasheet for **MR220023**

Gbgt1 (NM_139197) Mouse Tagged ORF Clone

Product data:

Product Type: Expression Plasmids
Product Name: Gbgt1 (NM_139197) Mouse Tagged ORF Clone
Tag: Myc-DDK
Symbol: Gbgt1
Synonyms: Fgs; Fs
Mammalian Cell Selection: Neomycin
Vector: pCMV6-Entry (PS100001)
E. coli Selection: Kanamycin (25 ug/mL)
ORF Nucleotide Sequence: >MR220023 representing NM_139197
Red=Cloning site Blue=ORF Green=Tags(s)

TTTTGTAATACGACTCACTATAGGGCGGCCGGAATTCGTCGACTGGATCCGGTACCGAGGAGATCTGCC
GCC**CGATCGCC**

ATGACCCGCCAAGACTGGCCAGGCTAGCGTTCTTCTGCTCGGTGGCACAGGTCTCTGGTCTGT
GGAAGTTTATCAAGGACTGGCTGCTGGTCTCCTACATACCCTATTACCTCCCCTGCCAGAGTTCTTCAA
CATGAAGCTGCCCTTCAGGAAGGAGAAACCGTTGCAGCCTGTGACACAGTTACAGTACCCTCAGCCTAAG
CTGCTGGAACACGACCCACAGAGCTGCTGACACTTACCCCGTGGTTGGCACCCATCGTCTCCGAGGGAA
CCTTTGACCCGGAGCTTCTGAAGAGCATGTACCAGCCGTTGAACCTGACCATTGGCGTCACCGTGTGTC
CGTGGGGAAGTACACCTGCTTATTACAGCGCTTCCGGAGTACAGTGAAGAGTTCTTTATGCGTGGGTAC
CAAGTACACTATTACCTCTTTACCCATGATCCTACAGCCGTTCCAGAGTTCCCCTGGGCCCCGGTCCGGC
TCCTCAGCATCATCCCTATCCAGGGTATTCCCGTGGGAGGAGATCTCCATGCGCCGAATGGAGACCAT
CAACAAACACATTGCCAAGAGAGCCACAAAGAAGTGGATTACCTCTTCTGTGTCGATGTGGATATGGTC
TTCCGTAACCCATGGGGCCCCGAGACCTTGGGGGATCTAGTGGCTGCCATTACCCAGGCTATTTTGCTG
TACCTCGCGGAAATCCCTTATGAACGCAGGCAAGTTTCTCTGCTTTGTGGCAGACAATGAGGGGA
CTTCTATTATGGTGGGCACTCTTTGGGGACGAGTGGCCAGAGTGTATGAGTTTACCCGGCCTGCCAC
ATGGCCATTCTGGCAGACAAAGCTAACAGCATTATGGCAGCCTGGCAGGAGGAGCCACCTGAACCGCC
ACTTCATCTGGCACAACCATCTAAGGTGCTGTCCCGAGATACCTCTGGGATGAAAGGAAGCCTCGGCC
CCGAAGCCTGAAGATGATTTCGATTCTCCTCAGTAAAAAGAATGCCAACTGGCTGAGGACC

ACGCGTACGCGGCCGCTCGAGCAGAACTCATCTCAGAAGAGGATCTGGCAGCAATGATATCCTGGATT
ACAAGGATGACGACGATAAGGTTTAA



[View online »](#)

Protein Sequence: >MR220023 representing NM_139197
Red=Cloning site Green=Tags(s)

MTRPRLAQGLAFFLLGGTGLWVLWKFIKDWLLVSYIPYYLPCPEFFNMKLPFRKEKPLQPVTLQYQPQK
 LLEHGPTPELLTLTPWLAPIVSEGTDFPELLKSMYQPLNLTIGVTVFAVGKYTCFIQRFLSAEEFFMRGY
 QVHYLLFTHDPTAVPRVPLGPRLLSIIPIQGYSRWEEISMRRMETINKHIAKRAHKEVDYLFCDVDVDMV
 FRNPWGPETLGDLVAAIHPGYFAVPRRKFPYERRQVSSAFVADNEGDFYGGALFGGRVARVYEFTRACH
 MAILADKANSIMAAWQEESHNRHF IWHKPSKVL SPEYLWDERKPRRSLK MIRFSSVKKNANWLR T

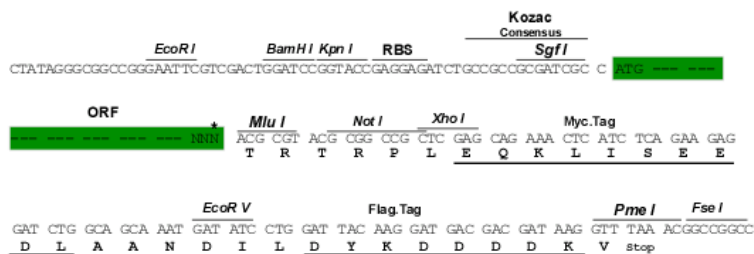
TRTRPLEQKLISEEDLAANDILDYKDDDDKV

Chromatograms: https://cdn.origene.com/chromatograms/mm9020_a02.zip

Restriction Sites: SgfI-MluI

Cloning Scheme:

Cloning sites used for ORF Shuttling:



* The last codon before the Stop codon of the ORF

ACCN: NM_139197

ORF Size: 1041 bp

OTI Disclaimer: The molecular sequence of this clone aligns with the gene accession number as a point of reference only. However, individual transcript sequences of the same gene can differ through naturally occurring variations (e.g. polymorphisms), each with its own valid existence. This clone is substantially in agreement with the reference, but a complete review of all prevailing variants is recommended prior to use. [More info](#)

OTI Annotation: This clone was engineered to express the complete ORF with an expression tag. Expression varies depending on the nature of the gene.

Components: The ORF clone is ion-exchange column purified and shipped in a 2D barcoded Matrix tube containing 10ug of transfection-ready, dried plasmid DNA (reconstitute with 100 ul of water).

Reconstitution Method:

1. Centrifuge at 5,000xg for 5min.
2. Carefully open the tube and add 100ul of sterile water to dissolve the DNA.
3. Close the tube and incubate for 10 minutes at room temperature.
4. Briefly vortex the tube and then do a quick spin (less than 5000xg) to concentrate the liquid at the bottom.
5. Store the suspended plasmid at -20°C. The DNA is stable for at least one year from date of shipping when stored at -20°C.

RefSeq: [NM_139197.2](#), [NP_631936.2](#)

RefSeq Size: 1335 bp

RefSeq ORF: 1044 bp

Locus ID: 227671

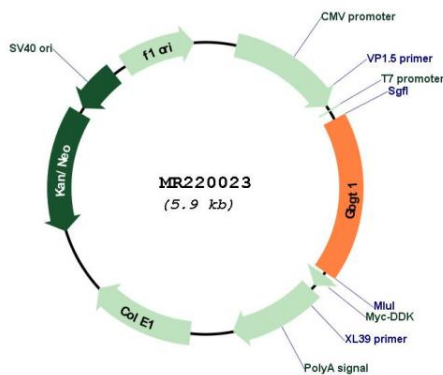
UniProt ID: [Q8VI38](#)

Cytogenetics: 2 A3

MW: 41 kDa

Gene Summary: Catalyzes the formation of Forssman glycolipid via the addition of N-acetylgalactosamine (GalNAc) in alpha-1,3-linkage to GalNAcb-1,3Gala-1,4Galb-1,4GlcCer (Gb4Cer). Forssman glycolipid (also called Forssman antigen; FG) probably serves for adherence of some pathogens. Conversely, it diminishes Shiga toxins susceptibility.[UniProtKB/Swiss-Prot Function]

Product images:



Circular map for MR220023