

Product datasheet for MR219986

Rpl35a (NM_001130485) Mouse Tagged ORF Clone

Product data:

Product Type: Expression Plasmids
Product Name: Rpl35a (NM_001130485) Mouse Tagged ORF Clone
Tag: Myc-DDK
Symbol: Rpl35a
Synonyms: 2810431L15Rik; Rpl35
Mammalian Cell Selection: Neomycin
Vector: pCMV6-Entry (PS100001)
E. coli Selection: Kanamycin (25 ug/mL)
ORF Nucleotide Sequence: >MR219986 ORF sequence
 Red=Cloning site Blue=ORF Green=Tags(s)

TTTTGTAATACGACTCACTATAGGGCGCCGGGAATTCGTCGACTGGATCCGGTACCGAGGAGATCTGCC
 GCC**CGATCGCC**

ATGTCTGGAAGGCTGTGGTGAAGGCCATTTTTGCTGGCTACAAGCGAGGTCTCCGAACCAAAGAGAGC
 ACACGGCTCTTCTTAAAATTGAAGGCGTTTATGCCGAGATGAAACGGAGTTCTACTTAGGCAAGAGATG
 TGCTTATGTGTATAAGGCAAAAAACAATACAGTGACTCCTGGAGGTAACCAAACAAAACCAGAGTGATC
 TGGGAAAGGTAACCTCGGCCCACGAAACAGCGGTATGGTTCGTGCCAAATCCGAAGCAACCTCCTG
 CAAAGGCCATTGGACACAGAATCCGTGTGATGCTGTACCCATCCCGATT

ACGCGTACGCGGCCGCTCGAGCAGAAACTCATCTCAGAAGAGGATCTGGCAGCAAATGATATCCTGGATT
 ACAAGGATGACGACGATAAGGTTTAA

Protein Sequence: >MR219986 protein sequence
 Red=Cloning site Green=Tags(s)
 MSGRLWCKAIFAGYKRGLRNQREHTALLKIEGVYARDETEFYLGKRCAYVYKAKNNTVTPGGKPNKTRVI
 WGKVTRAHGNMVRRAKFRSNLPAKAIGHRIRVMLYPSRI

TRTRPLEQKLISEEDLAANDILDYKDDDDKV

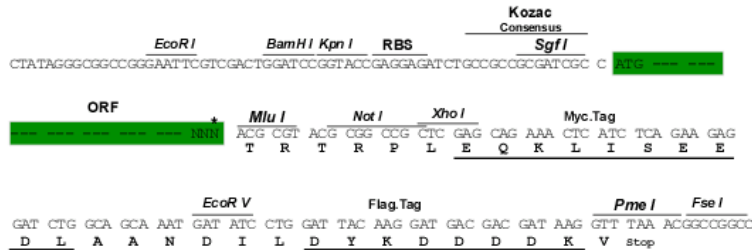
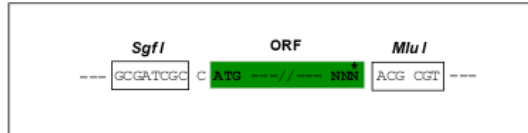
Restriction Sites: Sgfl-MluI



[View online »](#)

Cloning Scheme:

Cloning sites used for ORF Shuttling:



* The last codon before the Stop codon of the ORF

ACCN: NM_001130485

ORF Size: 333 bp

OTI Disclaimer: The molecular sequence of this clone aligns with the gene accession number as a point of reference only. However, individual transcript sequences of the same gene can differ through naturally occurring variations (e.g. polymorphisms), each with its own valid existence. This clone is substantially in agreement with the reference, but a complete review of all prevailing variants is recommended prior to use. [More info](#)
OTI Annotation: This clone was engineered to express the complete ORF with an expression tag. Expression varies depending on the nature of the gene.

Components: The ORF clone is ion-exchange column purified and shipped in a 2D barcoded Matrix tube containing 10ug of transfection-ready, dried plasmid DNA (reconstitute with 100 ul of water).

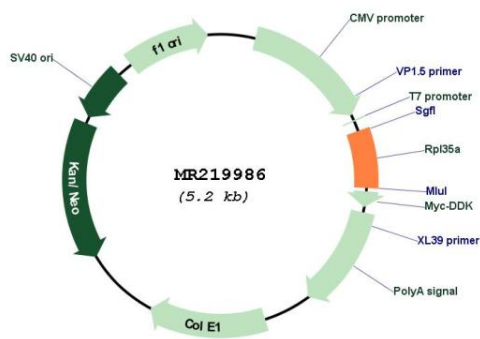
- Reconstitution Method:**
1. Centrifuge at 5,000xg for 5min.
 2. Carefully open the tube and add 100ul of sterile water to dissolve the DNA.
 3. Close the tube and incubate for 10 minutes at room temperature.
 4. Briefly vortex the tube and then do a quick spin (less than 5000xg) to concentrate the liquid at the bottom.
 5. Store the suspended plasmid at -20°C. The DNA is stable for at least one year from date of shipping when stored at -20°C.

RefSeq: [NM_001130485.1](#), [NP_001123957.1](#)
RefSeq Size: 503 bp

RefSeq ORF: 333 bp

Locus ID: 57808
UniProt ID: [O55142](#)
Cytogenetics: 16 B3
MW: 12.6 kDa
Gene Summary: Required for the proliferation and viability of hematopoietic cells. Plays a role in 60S ribosomal subunit formation. The protein was found to bind to both initiator and elongator tRNAs and consequently was assigned to the P site or P and A site.[UniProtKB/Swiss-Prot Function]

Product images:



Circular map for MR219986