

Product datasheet for **MR219970**

Angptl2 (NM_011923) Mouse Tagged ORF Clone

Product data:

Product Type:	Expression Plasmids
Product Name:	Angptl2 (NM_011923) Mouse Tagged ORF Clone
Tag:	Myc-DDK
Symbol:	Angptl2
Synonyms:	A1593246; Arp2; AW260363
Mammalian Cell Selection:	Neomycin
Vector:	pCMV6-Entry (PS100001)
E. coli Selection:	Kanamycin (25 ug/mL)



[View online »](#)

ORF Nucleotide Sequence:

>MR219970 representing NM_011923
 Red=Cloning site Blue=ORF Green=Tags(s)

CTATAGGGCGGCCGGAATTCGTCGACTGGATCCGGTACCGAGGAGATCTGCC
 GCC**CGATCGCC**

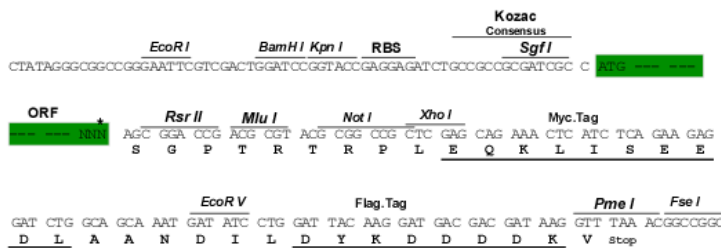
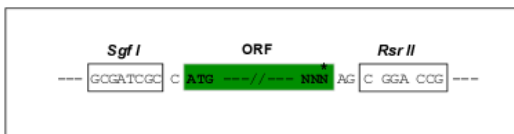
ATGAGGCCACTGTGTATGACCTACTGGTGGCTTGGACTGCTGGCCACGGTCGGAGCTGCTACAGGCCAG
 AGGCTGACGTTGAGGGCACAGAGGATGTTTACAGAGAGAGTACATTTACCTCAACAGGTACAAGCGGGC
 AGGTGAGTCCCCCGACAAGTGCACCTACACTTTTATTGTGCCACAGCAGCGGGTACAGGTGCCATTTGT
 GTCAACTCCAAGGAGCCTGAGGTGCACCTGGAGAACCCTGTGCACAAGCAGGAGCTGGAGCTGCTCAACA
 ATGAGCTGCTTAAGCAGAAGCGGCAGATCGAGACGCTGCAGCAGCTGGTAGAGGTAGACGGAGGCATCGT
 GAGCGAGGTGAAGCTGCTGCGCAAGGAGAGCCGAACATGAACTCGAGAGTCACGCAGCTGTACATGCAA
 CTTCTACATGAGATCATTGAAAGCGAGACAATGCGCTGGAGCTCTCCAGCTGGAGAACAGGATCTCTGA
 ACCAGACAGCTGACATGCTGCAGCTGGTAGCAAGTACAAGACCTGGAGCACAAGTTCAGCACCTGGC
 TATGCTGGCACACAACCAATCAGAGGTCATTGCTCAGCTCGAAGAGCACTGCCAACCGGTACCTGCAGCC
 AGGCCTATGCCCCAGCCACCCAGCAGCTCCACCTCGGGTCTACCAACCACCCACCTACAACCGCATCA
 TCAACCAGATTTCCACCAATGAGATCCAGAGTGACCAGAATCTGAAGGTGCTGCCGCCCTCTTGCCAC
 CATGCCTGCCCTTACAGTCTCCCATCTTCCACTGATAAGCCATCAGGTCATGGAGAGACTGCCTGCAA
 GCCCTGGAAGATGGTCACAGCACCAGCTCCATCTACCTGGTGAAGCCTGAGAATACCAACCGCCTGATGC
 AGGTGTGGTGTGACCAGAGACATGACCTGGAGGTTGGACTGTATCCAGAGACGCTGGATGGCTCTGT
 CAACTTCTCAGGAAGTGGGAGACCTATAAGCAAGGGTTGGGAACATCGATGGTGAAGTACTGGCTGGC
 CTGGAGAACATCTACTGGCTGACGAACCAAGGCAACTACAACCTGCTGGTAACCATGGAGGACTGGTCTG
 GCCGTAAGTCTTTGCTGAGTATGCCAGTTTCCGACTGGAGCCAGAAAGCGAGTACTATAAGCTGCCGCT
 GGGGCGTTATCATGGCAATGCAGGCGACTCCTTTACCTGGCACAAACGGCAACAGTTTACCACCTGGAC
 AGGGACCATGATGTCTACACAGGAACTGTGCCACTATCAGAAGGGAGGATGGTGGTATAACGCCTGTG
 CTCACTCCAACCTCAATGGGGTCTGGTACCGTGGGGGCCATTACCGGAGCAGATACCAGGACGGGGTCTA
 CTGGGCTGAGTCCGAGGAGGCTCTTACTCACTCAAGAAGGTGGTATGATGATTCGGCCCAACCCCAAC
 ACCTTCCAC

AG**CGGACCG**ACGCGT**ACGCGGCCGCTCGAGCAGAACTCATCTCTGAAGAGGATCTGGCAGCAAATGATATCCTGGATT**
ACAAGGATGACGACGATAAGGTTTAA

Restriction Sites:
 Cloning Scheme:

SgfI-RsrII

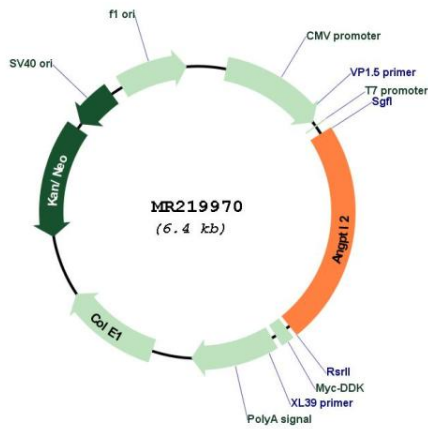
Cloning sites used for ORF Shuttling:



* The last codon before the Stop codon of the ORF

ACCN:	NM_011923
ORF Size:	1479 bp
OTI Disclaimer:	The molecular sequence of this clone aligns with the gene accession number as a point of reference only. However, individual transcript sequences of the same gene can differ through naturally occurring variations (e.g. polymorphisms), each with its own valid existence. This clone is substantially in agreement with the reference, but a complete review of all prevailing variants is recommended prior to use. More info
OTI Annotation:	This clone was engineered to express the complete ORF with an expression tag. Expression varies depending on the nature of the gene.
Components:	The ORF clone is ion-exchange column purified and shipped in a 2D barcoded Matrix tube containing 10ug of transfection-ready, dried plasmid DNA (reconstitute with 100 ul of water).
Reconstitution Method:	<ol style="list-style-type: none">1. Centrifuge at 5,000xg for 5min.2. Carefully open the tube and add 100ul of sterile water to dissolve the DNA.3. Close the tube and incubate for 10 minutes at room temperature.4. Briefly vortex the tube and then do a quick spin (less than 5000xg) to concentrate the liquid at the bottom.5. Store the suspended plasmid at -20°C. The DNA is stable for at least one year from date of shipping when stored at -20°C.
RefSeq:	NM_011923.4 , NP_036053.2
RefSeq Size:	3444 bp
RefSeq ORF:	1482 bp
Locus ID:	26360
UniProt ID:	Q9R045
Cytogenetics:	2 B
MW:	57.6 kDa
Gene Summary:	Induces sprouting in endothelial cells through an autocrine and paracrine action. [UniProtKB/Swiss-Prot Function]

Product images:



Circular map for MR219970