

Product datasheet for MR219862

Cacng6 (NM_133183) Mouse Tagged ORF Clone

Product data:

Product Type:	Expression Plasmids
Product Name:	Cacng6 (NM_133183) Mouse Tagged ORF Clone
Tag:	Myc-DDK
Symbol:	Cacng6
Synonyms:	2310033H20Rik; AW050150
Mammalian Cell Selection:	Neomycin
Vector:	pCMV6-Entry (PS100001)
E. coli Selection:	Kanamycin (25 ug/mL)
ORF Nucleotide Sequence:	>MR219862 representing NM_133183 Red=Cloning site Blue=ORF Green=Tags(s)

TTTTGTAATACGACTCACTATAGGGCGGCCGGAATTCGTCGACTGGATCCGGTACCGAGGAGATCTGCCGCCCGATCGCC

ATGATGTGGTCTAACTTCTTCATGCAAGAGGAAGACCGACCGGACAGCTGTGGCCGGCGTCGTGCC
AAGAACAGCAGAATCTCGGCTTGACTCCGGAGCGAGAGGGCAAGATCAAGCTGGGTTGCTGGTGGCAAT
CGTGGGTGCTACGCTGGCTGTGCTGGCTGTGGCACCGAGTTCTGGGTGGAACCAATACATAACAAGACC
AATGGCAGCGCCGCTGTGAGGCCGCCATTTGGGGCTGTGGAAGGTGTGCATCAAGCGACTGTGGCAGG
CGGATGTGCCCGGGCAGGGAGACCTGTGGCCAGCTGAGCTGCCAGGAGAAGCAAACCTGCACCTACTT
CAAATTCTTACCACGGGGGAAAATGCGCGCATCTCCAGCGAACCAAGAAAGAGGTAACCTGGCA
GCTGCCGTGATAGCTGTGCTGGGCTGACGGCCATGGCCTTGGGCTGCCTCTGTGTCATCATGGTGTCTA
GTAAGGTGCAGAGTCCCTGCTCCGATTGGGAGCTGTCTGCTTTGGCCTCTCAGGCCTGTGCTCTTTGT
CAGCCTGGAGGTGTTCCGGCATTCCGTAGGAGCCCTGCTGCAGGGAGTCAACCCTGAGACCCCTCCAGCT
CCACGCCTGGCCTATGAGTATCCTGGTCTTAGGCTGTGGTGTAGGCGCTGGTCTAATCCTGCTGCTGG
GGGAGTCTGTTCTCCTGCTCACCTTGCCCTTCTGGCCCTGGAGGTCACTGTGCCCAAGTGGGGTGG
CCAACCGCC

ACGCGTACGCGGCCGCTCGAGCAGAACTCATCTCAGAAGAGGATCTGGCAGCAAATGATATCCTGGATT
ACAAGGATGACGACGATAAGGTTTAA



[View online »](#)

Protein Sequence: >MR219862 representing NM_133183
 Red=Cloning site Green=Tags(s)

MMWSNFFMQEEDRRRTAVGRRRAQEQQNLGLTPEREGKIKLGLLVAIVGATLAVLAVGTEFWVELNTYKT
 NGSAVCEAAHLGLWKVCIKRLWQADVPAGRETCGPAELPGEANCTYFKFFTTGENARIFQRTTKKEVNLA
 AAVIAVLGLTAMALGCLCVIMVLSKGAESLLRLGAVCFGLSGLLLFVSLEVFRHSVVGALLQGVNPETPPA
 PRLAYEYSWSLGGVGVAGLILLGGVCFLLLTLPSPWRSLCPKWGGPTA

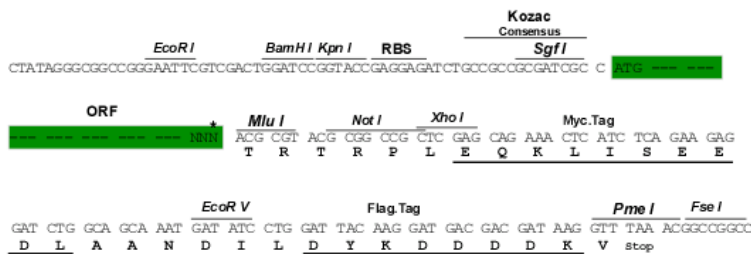
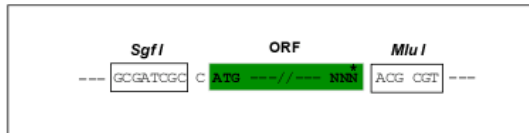
TRTRPLEQKLISEEDLAANDILDYKDDDDKV

Chromatograms: https://cdn.origene.com/chromatograms/mm9059_a11.zip

Restriction Sites: SgfI-MluI

Cloning Scheme:

Cloning sites used for ORF Shuttling:



* The last codon before the Stop codon of the ORF

ACCN: NM_133183

ORF Size: 780 bp

OTI Disclaimer: The molecular sequence of this clone aligns with the gene accession number as a point of reference only. However, individual transcript sequences of the same gene can differ through naturally occurring variations (e.g. polymorphisms), each with its own valid existence. This clone is substantially in agreement with the reference, but a complete review of all prevailing variants is recommended prior to use. [More info](#)

OTI Annotation: This clone was engineered to express the complete ORF with an expression tag. Expression varies depending on the nature of the gene.

Components: The ORF clone is ion-exchange column purified and shipped in a 2D barcoded Matrix tube containing 10ug of transfection-ready, dried plasmid DNA (reconstitute with 100 ul of water).

Reconstitution Method:

1. Centrifuge at 5,000xg for 5min.
2. Carefully open the tube and add 100ul of sterile water to dissolve the DNA.
3. Close the tube and incubate for 10 minutes at room temperature.
4. Briefly vortex the tube and then do a quick spin (less than 5000xg) to concentrate the liquid at the bottom.
5. Store the suspended plasmid at -20°C. The DNA is stable for at least one year from date of shipping when stored at -20°C.

RefSeq: [NM_133183.1](#), [NP_573446.1](#)

RefSeq Size: 783 bp

RefSeq ORF: 783 bp

Locus ID: 54378

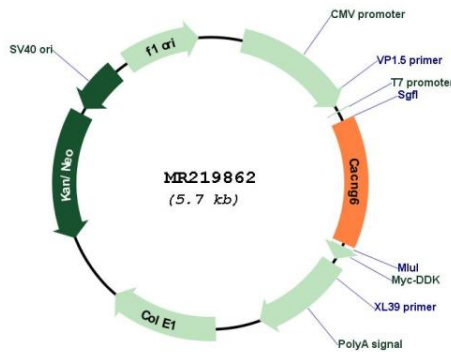
UniProt ID: [Q8VHW3](#)

Cytogenetics: 7 2.0 cM

MW: 28.1 kDa

Gene Summary: Regulates the activity of L-type calcium channels that contain CACNA1C as pore-forming subunit.[UniProtKB/Swiss-Prot Function]

Product images:



Circular map for MR219862