

## Product datasheet for MR219836

### Grxcr2 (NM\_001033426) Mouse Tagged ORF Clone

#### Product data:

Product Type:	Expression Plasmids
Product Name:	Grxcr2 (NM_001033426) Mouse Tagged ORF Clone
Tag:	Myc-DDK
Symbol:	Grxcr2
Synonyms:	Gm851
Mammalian Cell Selection:	Neomycin
Vector:	pCMV6-Entry (PS100001)
E. coli Selection:	Kanamycin (25 ug/mL)
ORF Nucleotide Sequence:	>MR219836 ORF sequence Red=Cloning site Blue=ORF Green=Tags(s)

TTTTGTAATACGACTCACTATAGGGCGCCGGGAATTCGTCGACTGGATCCGGTACCGAGGAGATCTGCC  
GCC**CGATCGCC**

ATGGAGGACTCCGAGAAGAACTGAATCAGAAGAGCGACGACAAACCCAGAAAAGTCCGGTTTAAAATCT  
CCTCTTCTACAGTGGCCGAGTGTGAAGCAGTTTTTTGAGGATGGCAAGAATTAGAGTCGCCAAAGA  
AGAATATCCTCACAGTTTTCTCCAGGAGGCCCTGAACCAATGGATGGCGTTTATGGGTCTGGGGAAGTC  
CCCAAGCCCCAGCCGTAATCCCCAAGCTGACTGCTCAGAGAATCAGCGTATTCAGAGACAGCGGCCCT  
ACACTCTGGCGGGCAGCCAGCCTCTGTCAATGACTACAAGGCGAATGACCATAAGCCTCCACCCATTAT  
AGACTTTGGGAAGATAATTATCTATACCAACAACCTGAAAATCATCAGAACCCCGATGGACAAAAGGGAC  
TTCATGAGGAAAATCCTCCAAAAGGAAGATGTGGCTGAGGAAGCGTCCCTGATGATCACAGGGGAGAATG  
ATGGAGACAGGGAGCAAGGCTGCCCCCTGCCGGAGCGGAACGGCAGCCCCCTGCCGGAGTCGGAGCGCAC  
ATTTCTTCATAGTCAGCACACAGGATGGGTTGGTCCCTGAGGACTGCCTCCACTGCCAGGGGTCTGGC  
ATTGCCACCTGTTCTCTGTGCCACGGCAGCAAGTTCTCCATGCTGGCTAACAGATTCAAGGAGTCTACC  
GAGCCCTCAGGTGCCCTGCCTGCAACGAGAATGGCCTGCAACCTTGCCGAATTTGCAGCCCA

**ACGCGT**ACGCGGCCGCTCGAGCAGAACTCATCTCAGAAGAGGATCTGGCAGCAAATGATATCCTGGATT  
ACAAGGATGACGACGATAAGGTTTAA



[View online »](#)

**Protein Sequence:** >MR219836 protein sequence  
Red=Cloning site Green=Tags(s)

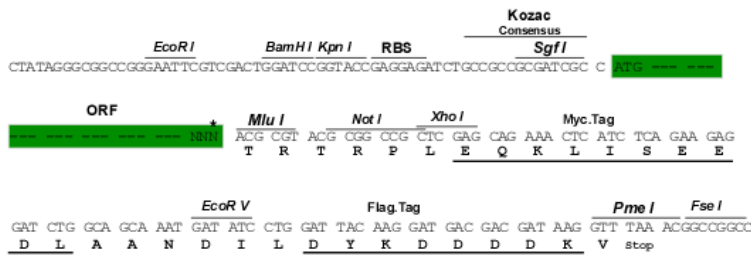
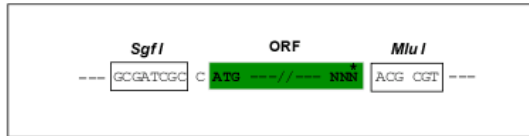
MEDSEKLNQKSDDKPRKVRFKISSYSGRVLKQVFEDGQLESPKKEYPHSFLQEALEPMDGVYGSGEV  
 PKPQPYPSPKLT AQRISVFRDSGAYTLAGSQPLFNDYKANDHKPPP I IDFGK I I I YTNLKI I RT PMDKRD  
 FMRKILQKEDVAEEASL MITGENDGDREQGCLPERNGSPLPE SERTFLHSQHTQDGLVPEDCLHCQGS  
 IATCSLCHGSKFSMLANRFKESYRALRCPACNENGLQPCRICSP

TRTRPLEQKLISEEDLAANDILDYKDDDDKV

**Restriction Sites:** Sgfl-MluI

**Cloning Scheme:**

Cloning sites used for ORF Shuttling:



\* The last codon before the Stop codon of the ORF

**ACCN:** NM\_001033426

**ORF Size:** 765 bp

**OTI Disclaimer:** The molecular sequence of this clone aligns with the gene accession number as a point of reference only. However, individual transcript sequences of the same gene can differ through naturally occurring variations (e.g. polymorphisms), each with its own valid existence. This clone is substantially in agreement with the reference, but a complete review of all prevailing variants is recommended prior to use. [More info](#)

**OTI Annotation:** This clone was engineered to express the complete ORF with an expression tag. Expression varies depending on the nature of the gene.

**Components:** The ORF clone is ion-exchange column purified and shipped in a 2D barcoded Matrix tube containing 10ug of transfection-ready, dried plasmid DNA (reconstitute with 100 ul of water).

**Reconstitution Method:**

1. Centrifuge at 5,000xg for 5min.
2. Carefully open the tube and add 100ul of sterile water to dissolve the DNA.
3. Close the tube and incubate for 10 minutes at room temperature.
4. Briefly vortex the tube and then do a quick spin (less than 5000xg) to concentrate the liquid at the bottom.
5. Store the suspended plasmid at -20°C. The DNA is stable for at least one year from date of shipping when stored at -20°C.

**RefSeq:** [NM\\_001033426.2](#), [NP\\_001028598.1](#)

**RefSeq Size:** 1120 bp

**RefSeq ORF:** 765 bp

**Locus ID:** 332309

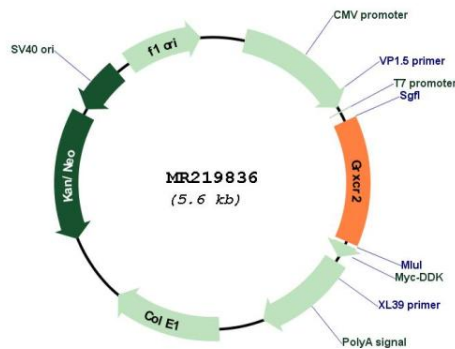
**UniProt ID:** [Q3TYR5](#)

**Cytogenetics:** 18 B3

**MW:** 28.6 kDa

**Gene Summary:** Could play a role in maintaining cochlear stereocilia bundles that are involved in sound detection.[UniProtKB/Swiss-Prot Function]

### Product images:



Circular map for MR219836