

## Product datasheet for MR219737

### Madd (NM\_001177719) Mouse Tagged ORF Clone

#### Product data:

Product Type:	Expression Plasmids
Product Name:	Madd (NM_001177719) Mouse Tagged ORF Clone
Tag:	Myc-DDK
Symbol:	Madd
Synonyms:	9630059K23Rik; IG20
Vector:	pCMV6-Entry (PS100001)
E. coli Selection:	Kanamycin (25 ug/mL)
Cell Selection:	Neomycin
ORF Nucleotide Sequence:	>MR219737 representing NM_001177719 Red=Cloning site Blue=ORF Green=Tags(s)

TTTTGTAATACGACTCACTATAGGGCGCCGGAATTCGTCGACTGGATCCGGTACCGAGGAGATCTGCC  
GCC**GCGATCGCC**

ATGGTGCAAAAGAAGTTCTGCCCTCGTTACTTGACTATCTCGTGATCGTAGGGGCGAGGCACCCAAGCA  
GTGACAGTGTGGCTCAGACTCCTGAGCTGCTGCGGAGGTACCCACTAGAGGATCACCCAGAGTTCCCCCT  
GCCCCAGATGTGGTGTCTTCTGCCAGCCAGAAGGATGTCTGAGTGTGCGGCAGCGCGGATGAGCCTT  
CGGGACGATACCTCTTTGTCTTACCCTAACCGATAAGGACACCGGAGTCACCCGCTATGGCATCTGTG  
TCAACTTCTACCGTTCTTCCAAAAGCGAATGCCAAAAGGAAAAGTTGGAAGGCGGAGCAGGACCCCGTGG  
GAAGGAAGGGCGCTCACACCTCTGGTGCCTCAGAAGAGGCTGCCGCTGGGAGCTCAGAGAGTGGCTCAACC  
TTGACGCCGCTAGTGTGACTCCACTCCTGACGTAACCCAGTCTCCTCGGGCAAACGTAGGGCAAAG  
CGGGCAGCCGCTCCCGCAACAGTACCCTGACATCCCTGTGTGTGCTTAGCCACTACCCCTTCTTCTCTAC  
CTTCAGAGAGTGTCTGTATACTCTCAAACGTTTGGTAGACTGTGTAGTGAACGGCTGTAGGCAAGAAA  
CTGGGCATCCCTCGAGGTGTACAAAGGGACACCATGTGGCAATCTTACTGGACTGCTAGTGGAGG  
AGAAGTCCAGTGCCCTTCTGCAAGACCTTCGAGAGATTGAGGCCTGGATCTATCGGTTGCTACGTTCCCC  
AGTGCCTGTCTCTGGCAGAAGCGAGTGGACATTGAGGTCTGCCAGGAACCTCCAGCAGGCCCTGACA  
TTTGCTCTCCAGATCCATCTCGATTACCCCTAGTAGATTTCCCTCTTACCTTCCCTTGAACCTCTGG  
GTGTAGATGCTTGTCTTCAGGTGCTAACCTGCATCCTGTTGGAGCACAAGGTGGTGTGCTGACGTCGAGA  
CTACAATGCACTCTCCATGTCTGTGATGGCGTTCTGGCAATGATCTACCCCTGGAGTACATGTTCCCG  
GTCATCCCGTGTCTCCACCTGCATGGCTCGGCAGAGCAGCTACTCTTGGCTCCAACCCCATACATCA  
TTGGAGTCTCGCAGCTTCTTCTCTACAAGCTAGATTTCAAATGCCCGATGACGTGTGGCTAGTGGA  
TCTGGACAGCAATAGGGTATTGCCCCACCAATGCAGAAGTGTACCCATCCTGCCAGAACCAGAATCA  
TTAGAGCTGAAAAACACTTAAAGCAGGCCTTAGCCAGCATGAGTCTCAACACCCAGCCATTCTTAACC  
TGAGAAAATTCCACGAGGGCCAGGAGATCCCGTCTCTTGGGAAGGCCATCTAATGACCTTCAGTCCAC  
ACCTTCCACTGAATTCACCCGCTATTATGGCAATGATGTAGATTGAGTTCAGTTCGACGTTGCAACGAGAGTG  
GCCATGGTACGTTTCTCAACTCTGCTAACGTGCTGCAGGCTTTCAGATGCACACACGTACCCTGCGAC



[View online »](#)

TCTTCCCCGGCCTGTGGTAGCTTTCCAAGCTGGCTCCTTTCTGGCCTCACGTCCCCGGCAGACTCCCTT  
 TGCTGAGAACTGGCCAGGACCCAAGCTGTGGAGTATTTTGGAGAATGGATCCTGAACCTTCTAACTAT  
 GCCTTCCAGCGGATTACAACAATACGTTTGTATCCGGCCCTTATTGGTGACAAGCCAAAGTGGTACGCTC  
 ACCAGTGCAGCCATCCATTATCGAGTCTATGATGGCAACTCTCAGCTGGCCGAGGCCCTGAGTGTGCC  
 CCCGGAGCGGATTCTGACTCCGACCCGACGGAGGACAGTGGCAGTGATAGTCAGGATTATGATGACTCA  
 AGCTCTTCTTACTCCTCCCTTGGGGACTTTGTCAAGTAAATGATGAAATGTGACATCAATGGAGACTC  
 CCAATGTGGATCCTCTGACCCATGCAGCCCTGGGAGATGCCAGTGAAGTGGAGATTGACGAGCTGCAGCC  
 CCAGAAGGAGGGAGAGGAACCCGGCCAGACAGTGAAGTCTCAGGAAAACCTCCGCTGCGCTCCAGC  
 TCCAGCACCGGCCAGCAGCAGCCCGACCCGTTGTCCACAGTGCCCACTCTGAAGTCTGACTCTA  
 CAGAGATGGGAGATAAGGCCACAGCAGGCATCTCCAAGCCCTCCCTCCCGTGCCTCCAGCATTGCAA  
 ATCTACTGTGGACAGGAGACAGACAGAGACTGGAGAGGGTCAAGTGTGCCAGCGAACCTATGACAATCCA  
 TACTTCGAGCCCCAGTATGGCTTTCCCGGAGGAAGTGAAGGAGGAGCAGGGGAGAGCTACACTCCCC  
 GGTTCCAGCCAGTGTGAGTGGCAGTGGGCTCAAAGCTGTGCGGCCAACAGCTTGAAGTGGCAAG  
 TGACTCAGACGCAGAGTCAAGTCTCGAGCAAGCTCTCCAACTCCACTGTCTTAACAACAGCACCGAG  
 GGCTTCGGGGGCATCATGTCTTTTGTAGCAGCTGTATCGGAACCATAGTACAAGTTCAGTCTTTCAA  
 ACCTCACACTGCCACCAAAGGTGCCCGGAGAAGACGACACCATTCCCCAGCCTGAAAGTATTTGGGCT  
 AAATACTCTAATGGAGATTGTTACTGAAGCCGGCCCTGGGAGTGGTGAAGGAAATAGGAGGGCCTTAGT  
 GACCAGAAGTCTATCTGTATTAAACACAGCCCAACCGTAAAAGAGAACCTTATCCCCACAGGGCCGGT  
 CGAGCAACTCTAGCGAGAACCAGCAGTTCCTGAAGGAAGTAGTCCATAGTGTGCTGGACGGCCAGGGAGT  
 GGGCTGGCTCAATATGAAGAAGTACGCCGGCTCCTGGAGAGTGAAGCAGCTTAGAGTCTTTGACTGAGC  
 AAGCTGAATCGCGCAGTGCAGTCAAGGATGACGCCGGCAGGATGTATCCAAGACGTGGAGATCAGCC  
 GGAAGGTGTACAAGGGGATGCTAGACCTCTCAAGTGCACAGTCTCAGCCTCGAGCAGTCTATGCCCA  
 CGCAGTCTGGTGGTATGGCCAGCATCTTTGGGCTTTTGGAGATTGCCAGACCACTACTATAGTAAA  
 GAACCAGACAAAACGGAAGAGAAGTCCGACAGAGAATGTAATACCCAGTTGGCAAGGATCCTGGTCTGG  
 CTGGGCGGGGGACCCAAAGCAATGGCCAGCTAAGGGTCCCTCAACTGGGCCCTCGGGACCAAGTGC  
 TACAGGAAAGGGTCTAAAGAACTGGATACCAGAAGTTTAAAGGAAGAGAATTTTGTAGCATCTGTTGAA  
 TTGTGGAACAAGCACCAGGAAGTAAAAAGCAAAGGCTTTGGAAAAACAGAGGCCAGAGGGCATCAAGC  
 CTGTCTTTGACCTGGGTGAGACAGAGGAGAAAAAGTCCCAGATGAGCGCAGACAGTGGTGTGAGCCTGAC  
 ATCTGCCTCCAGAGGACTGATCAAGACTCTGTCATCGGTGTGAGTCCAGCTGTTATGATCCGAAGTCA  
 AGTCAGGATTCTGAAGTTAGCACCGTGAATAGTTCGGGAGAGACCTTGGAGCTGACAGTGACCTGA  
 GCAGCAATGCAGGTGACGGGCCAGGAGGCAAGGCAGCGCCACCTGGCAAGTCCCGGGCCACTCTGTC  
 CGACAGTGAATCGAAACCAATTCTGCTACAAGCGCCATCTTTGGTAAAGCCCATAGCTTGAAGCCAAAG  
 GAGAAGCCGGCTGGTAGTCCGATTCCGCTCTTCCGAAGACGTAAGCCAGCGAGTCTATCTCTATGAGGGAC  
 TGCTAGGAAGGGACAAAGGATCCATGTGGGACCAGCTAGAGGATGCCGCTATGGAGACCTTTTCTCTGAG  
 CAAAGAAGCTTACCTTATGGGACCAATGCAGTTCTGGGAAGATGCATTCTTAGATGTGTAATGTTG  
 GAAAGAGAAGGAATGGGTATGGACCAGGGTCTCAGGAAATGATCGACAGGTACCTCTCCCTAGGGGAAC  
 ACGACCGGAAGCGCTGGAGGATGATGAAGACCCTTGTGGCCACACTTTACACAACCTCATATCCTA  
 TATGCTGCTGATGAAGGTGAACAAGAATGACATCAGGAAGAAAGTACGGCGCCTAATGGAAAGTCCCAC  
 ATTGGGCTGGTGTACAGCCAGCAAGTCAATGAGGTGCTCGATCAGCTGAACAGCCTGAATGGACGTGATC  
 TCTCCATCCGGTCCAGCGCAGCCGGCACATGAAGAAGCAGACTTTTGTGTGCATGCAGGACCGGACAC  
 AAATGGAGACATCTTTTTCATGGAAGTGTGTGATGACTGCGTGGTGTGCGTAGTAACATTGGGACGGTG  
 TACGAGCGCTGGTGGTATGAGAAGCTCATCAATATGACCTACTGTCCCAAGACCAAGGCTCTGTGCTTAT  
 GGCGGAGAAAATGGCTCTGAGACCCAGCTCAACAAGTCTATACCAAGAAGTGTGAGAGCTGTAATACTG  
 TGTGAAGGACAGCATGGAACGTGCTGCTGCCCGACAGCAAAGCATCAAACCTGGGCTGAGCTAGGCGGT  
 GAGTTCCTGTGCAGGACATGAAGACTGGAGAGGGTGGCTTGCTCAAGTCAACCTGGAAGGGATCAATC  
 TCAAGTTCATGCACAACCAGTTCCTGAAATTAAGAAGTGG

ACGCGTACGCGGCGCTCGAGCAGAACTCATCTCAGAAGAGGATCTGGCAGCAAATGATATCCTGGATT  
 ACAAGGATGACGACGAT AAGGTTTAA

**Protein Sequence:** >MR219737 representing NM\_001177719  
 Red=Cloning site Green=Tags(s)

```

MVQKKFCPRLLDYLIVIGARHPSSDSVAQTPPELLRRYPLEDHPEFPLPPDVVFFCQPEGCLSVRQRMSL
RDDTSFVFTLTDKDTGVTRYGICVNFYRSFQKRMPKEKVEGGAGPRGKEGAHTSGASEEAAAGSSESGST
LQPPSADSTPDVNQSPRGKRRKAGSRSRNSTLTSCLVLSHYPPFFSTFRECLYTLKRLVDCSERLLGKK
LGIPRGVQRDTMWRIFTGSLLEVEEKSSALLQDLREIEAWIYRLLRSPVPSGQKRVDIIEVLPQELQAL
FALPDPSTRFTLVDFPLHPLLELLGVDACLQVLTCLLLEHKVVLQSRDYNALSMSVMAFVAMIYPLEYMF
VIPLLPCTMASAEQLLLAPTPIIGVPASFFLYKLDKMPDDVWLVLDLSNRVIAPTNAEVLPIPEPES
LELKKHLKQALASMSLNTQPIILNLEKFHEGQEIPLLLGRPSNDLQSTPSTEFNPLIYGNDVDSVDVATRV
AMVRFNNSANVLQGFQMHTRTLRLFPRPVVAFQAGSFLASRPRQTPFAEKLARTQAVEYFGEWILNPSNY
AFQRIHNNTFDPALIGDKPKWYAHQLQPIHYRVYDGNSQLAEALSVPPERDSDSPTEDSGSDSQDYDDS
SSSYSSLGDFVSEMMKCDINGDTPNVDPLTHAALGDASEVEIDELQPQKEGEEGPDSENSQENPLRSS
SSTTASSPSTVVHSAHSEAADSTEMGDKATAGISKPLPPVPSICKSTVDRRQTETGEGSVCQRTYDNP
YFEPQYGFPEEEDDEEQGESYTPRF SQHVS GSRAQKLLRPNSLKLASDSAE SDSRASSPNSTVSNSTE
FGGIMSFASSLYRNHSTFSLSNLTLPTKGAREKTPFP SLKV FGLN TLM EIVTEAGPGSGEGNRRALV
DQKSSVIKHSPTVKREPSSPQGRSSNSSENQQFLKEVVH SVLDGQGVGWLNMKKVRRLL ESEQLRVFVLS
KLNRAVQSEDDARQDVIQDVEISRKYVKGMLDLLKCTVLSLEQSYAHAGLGGMASIFGLLEIAQTHYYSK
EPDKRKRSPNTENVNTPVGKDPGLAGRDPKAMAQLRVPQLGPRAPSATGKGPKELDTRSLKEENFVASVE
LWNKHQEVKKQKALEKQRPEGIKPVFDLGETEEKKSQMSADSGVSLT SASQR TDQDSVIGVSPAVMIRSS
SQDSEVSTVSNSSGETLGADSDLSSNAGDGGGEGSAHLASSRATLSDSEIETNSATSAIFGKAHSLKPK
EKPA GSP IRSSE DV SQRVYL YEGLLGRDKGSMWDQLEDAAMET FSL SKERSTLWDQM QFWEDAF L DAVML
EREGMGM DQGPQEMIDRYL SLGEHDRKRL EDDERLLATLLHNL ISYMLLMKVNKNDIRKKVRRLLMGKSH
IGLVYSQVNEVLDQLNSLNGRDL SIRSSGSRHMKKQTFV VHAGTD TNGDIF FMEVCDDCV VLRNSIGTV
YERWWYEKLINMTYCPKTKVLC LWRRNGSETQLNKFYTKCREL YYCVKDSMERA AARQQS IKPGPELGG
EFPVQDMKTGEGLLQVTLEGINLKF MHNQFLK LKKW
  
```

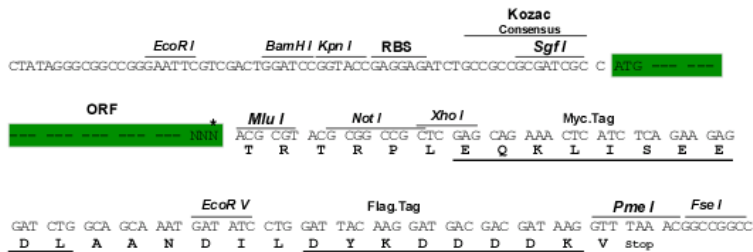
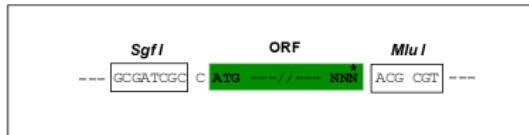
TRTRPLEQKLISEEDLAANDILDYKDDDDKV

**Restriction Sites:**

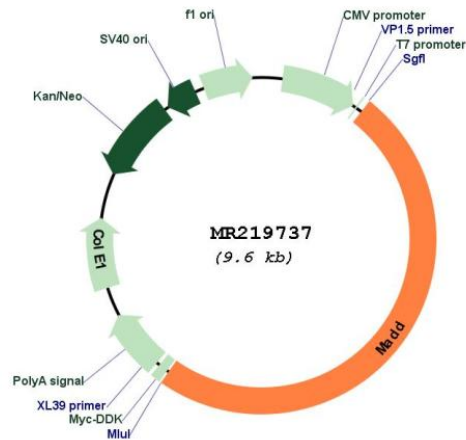
SgfI-MluI

**Cloning Scheme:**

Cloning sites used for ORF Shuttling:



\* The last codon before the Stop codon of the ORF

**Plasmid Map:**


**ACCN:** NM\_001177719

**ORF Size:** 4731 bp

**OTI Disclaimer:** The molecular sequence of this clone aligns with the gene accession number as a point of reference only. However, individual transcript sequences of the same gene can differ through naturally occurring variations (e.g. polymorphisms), each with its own valid existence. This clone is substantially in agreement with the reference, but a complete review of all prevailing variants is recommended prior to use. [More info](#)

**OTI Annotation:** This clone was engineered to express the complete ORF with an expression tag. Expression varies depending on the nature of the gene.

**Components:** The ORF clone is ion-exchange column purified and shipped in a 2D barcoded Matrix tube containing 10ug of transfection-ready, dried plasmid DNA (reconstitute with 100 ul of water).

**Reconstitution Method:**

1. Centrifuge at 5,000xg for 5min.
2. Carefully open the tube and add 100ul of sterile water to dissolve the DNA.
3. Close the tube and incubate for 10 minutes at room temperature.
4. Briefly vortex the tube and then do a quick spin (less than 5000xg) to concentrate the liquid at the bottom.
5. Store the suspended plasmid at -20°C. The DNA is stable for at least one year from date of shipping when stored at -20°C.

**RefSeq:** [NM\\_001177719.1](#), [NP\\_001171190.1](#)

RefSeq Size: 6151 bp

RefSeq ORF: 4734 bp

Locus ID: 228355

UniProt ID: [Q80U28](#)

Cytogenetics: 2 E1

MW: 175.6 kDa

**Gene Summary:** Plays a significant role in regulating cell proliferation, survival and death through alternative mRNA splicing. Converts GDP-bound inactive form of RAB3A, RAB3C and RAB3D to the GTP-bound active forms. Component of the TNFRSF1A signaling complex: MADD links TNFRSF1A with MAP kinase activation. Plays an important regulatory role in physiological cell death (TNF-alpha-induced, caspase-mediated apoptosis).[UniProtKB/Swiss-Prot Function]