

Product datasheet for **MR219691**

Rab23 (NM_008999) Mouse Tagged ORF Clone

Product data:

Product Type:	Expression Plasmids
Product Name:	Rab23 (NM_008999) Mouse Tagged ORF Clone
Tag:	Myc-DDK
Symbol:	Rab23
Synonyms:	AW545388; opb; opb2
Mammalian Cell Selection:	Neomycin
Vector:	pCMV6-Entry (PS100001)
E. coli Selection:	Kanamycin (25 ug/mL)
ORF Nucleotide Sequence:	>MR219691 ORF sequence Red=Cloning site Blue=ORF Green=Tags(s)

TTTTGTAATACGACTCACTATAGGGCGCCGGGAATTCGTCGACTGGATCCGGTACCGAGGAGATCTGCC
GCC**CGATCGCC**

ATGTTGGAGGAAGATATGGAAGTGGCCATCAAGATGGTGGTGGTGGGAATGGGGCGTTGGAAAGTCGA
GCATGATTCAGCGCTACTGCAAAGGCATTTTACAAAAGACTACAAGAAAACCATCGGCGTAGACTTTTT
GGAGCGACAGATTCAGGTTAATGATGAAGATGTAAGGCTAATGTTATGGGACACTGCAGGTCAAGAGGAG
TTTGATGCAATCACGAAGGCCTACTATCGAGGAGCCCAGGCTTGTGTCTTGTGTTTTCTACCACAGACA
GGGAATCTTTTGAAGCGATTTCCAGCTGGAGAGAAAAAGTAGTAGCGGAGTTGGAGATATACCAACCGC
ACTGGTGCAAAACAAGATCGATCTGCTGGATGATTCATGCATCAAAAATGAGGAAGCGGAGGACTGGCC
AAAAGGCTAAAGCTGAGGTTCTACCGGACGTCCTGTAAGGAGGACCTCAACGTGAGTGAAGTTTTTAAAT
ATTTGGCTGAGAAACACCTACAAAACTCAAACAATAACCGAAGATCCAGAACAGACACACTCAAG
TAGTAACAAGATTGGTGTCTTAAATGCATCGGTCGGAAGTCACTTGGGCCAGAATTCAAGTTCCTTAAT
GGTGGCGATGTCATCAACCTTAGACCTAACAACAAGGACCAAGAGAACCAGAAACCTTTTCAGCAGCT
GTAGTGATACC

ACGCGTACGCGGCCGCTCGAGCAGAAACTCATCTCAGAAGAGGATCTGGCAGCAAATGATATCCTGGATT
ACAAGGATGACGACGATAAGGTTTAA



Protein Sequence: >MR219691 protein sequence
 Red=Cloning site Green=Tags(s)

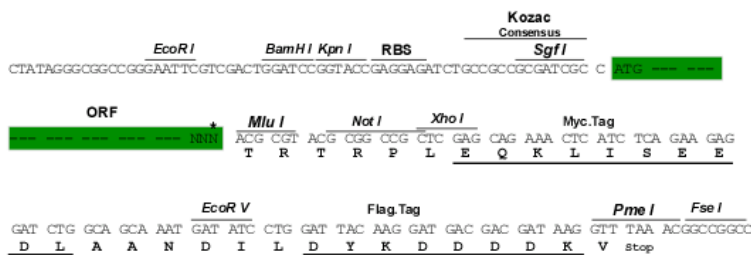
MLEEDMEVAIKMVVVNGAVGKSSMIQRYCKGIFTKDYKKTIGVDFLERQIQVNDEDVRLMLWDTAGQEE
 FDAITKAYYRGAQACVLVFSTTDRESFEAISSWREKVVAVVDIPTALVQNKIDLLDDSCIKNEEAEGLA
 KRLKLRFYRTSVKEDLVSEVFKYLAEKHLQKLKQKITEDPEQTHSSSNKIGVFNASVGSHLGQNSSSLN
 GGDVINLRPNKQRTKRTRNPFSSCSVP

TRTRPLEQKLISEEDLAANDILDYKDDDDKV

Restriction Sites: SgfI-MluI

Cloning Scheme:

Cloning sites used for ORF Shuttling:



* The last codon before the Stop codon of the ORF

ACCN: NM_008999

ORF Size: 714 bp

OTI Disclaimer: The molecular sequence of this clone aligns with the gene accession number as a point of reference only. However, individual transcript sequences of the same gene can differ through naturally occurring variations (e.g. polymorphisms), each with its own valid existence. This clone is substantially in agreement with the reference, but a complete review of all prevailing variants is recommended prior to use. [More info](#)

OTI Annotation: This clone was engineered to express the complete ORF with an expression tag. Expression varies depending on the nature of the gene.

Components: The ORF clone is ion-exchange column purified and shipped in a 2D barcoded Matrix tube containing 10ug of transfection-ready, dried plasmid DNA (reconstitute with 100 ul of water).

Reconstitution Method:

1. Centrifuge at 5,000xg for 5min.
2. Carefully open the tube and add 100ul of sterile water to dissolve the DNA.
3. Close the tube and incubate for 10 minutes at room temperature.
4. Briefly vortex the tube and then do a quick spin (less than 5000xg) to concentrate the liquid at the bottom.
5. Store the suspended plasmid at -20°C. The DNA is stable for at least one year from date of shipping when stored at -20°C.

RefSeq: [NM_008999.1](#), [NM_008999.2](#), [NM_008999.3](#), [NM_008999.4](#), [NP_033025.2](#)

RefSeq Size: 4321 bp

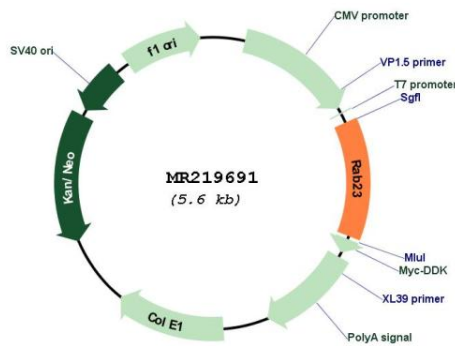
RefSeq ORF: 714 bp

Locus ID: 19335

Cytogenetics: 1 12.8 cM

MW: 26.7 kDa

Product images:



Circular map for MR219691