

## Product datasheet for **MR219515**

### Mixl1 (NM\_013729) Mouse Tagged ORF Clone

#### Product data:

Product Type:	Expression Plasmids
Product Name:	Mixl1 (NM_013729) Mouse Tagged ORF Clone
Tag:	Myc-DDK
Symbol:	Mixl1
Synonyms:	Mm1; Mml
Mammalian Cell Selection:	Neomycin
Vector:	pCMV6-Entry (PS100001)
E. coli Selection:	Kanamycin (25 ug/mL)
ORF Nucleotide Sequence:	>MR219515 ORF sequence Red=Cloning site Blue=ORF Green=Tags(s)

TTTTGTAATACGACTCACTATAGGGCGCCGGGAATTCGTCGACTGGATCCGGTACCGAGGAGATCTGCC  
GCC**CGATCGCC**

ATGGCCGCAGCAGGGTCCCAGCAGCTCCAGTTCGAGAAAGGCGCCGCTTTCCCCATCTTCCCCGCCGCGC  
ATCCCGGAGGGCAGCTGCTCCCAGCCATGCGCCAGCCTCTGGGCTGCCCGGGCGCCCCACGACTCTCG  
CGCCCCAGCAGCCACGCAGTGTTCCTCAAACCGCGACTCCAGTCCACAGCGCAGACCCCGCCGGCCTG  
GATCCGCCGGACCTCAAAGGCTCGGCCGCCCGTCCGGCGCCACAGCGCCGAAGCGCAGCTCGTTCA  
GCTCGGAGCAGCTGCAGTTGCTGGAGCTCGTCTCCGACAGACCATGTACCCAGACATCCACTTGCGGGA  
GCGCCTGGCTGCGCTCAGCTGCTACCCGAGTCCAGGATCCAGGTGTGGTTCCAGAACCGAGGGCCAAG  
TCCAGGGCCAGAGTGGGAAGTCATTTACGCCCTTATCCTCAAGGCGGGGAGTTTTCTCCTCATTGCCCTG  
CTCCTGGGACTGAAGCTAGGTGTTTGAAGCCTCAGCTGCCCTGGAGGCAGATGTGAACCAGTTCCGGGA  
TCCCAGCATGACTGGAGGAGCGTCTGCACATCTGTTTCTCAGAGTTTTGAAACGTATTCGTCTCTCTCT  
GAAGATATTGGCTCAAAGTTGGACTCCTGGGAGGAGCACATCTTTCTGCCTTAGGTAATTC

**ACGCGT**ACGCGGGCCGCTCGAGCAGAACTCATCTCAGAAGAGGATCTGGCAGCAATGATATCCTGGATT  
ACAAGGATGACGACGATAAGGTTTAA



[View online »](#)

**Protein Sequence:** >MR219515 protein sequence  
 Red=Cloning site Green=Tags(s)

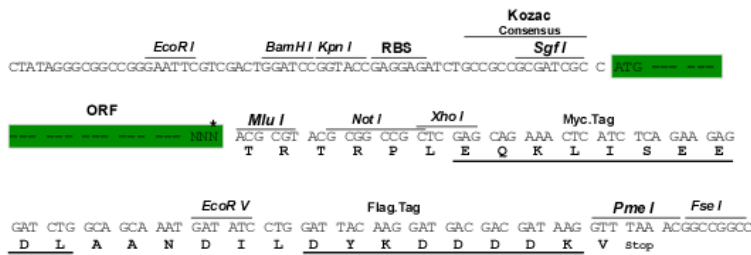
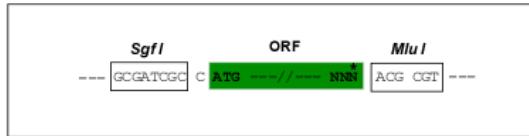
MAAAGSQQQLQFAEGAAFPFIPAAHPGGQLLPAMRPASGLPAAPHDSRAPAATQCFPNRDSSTPAQTAPAGL  
 DPPGPSKGSAAAPSAPQRRKRTSFSEQLLLELVFRQTMYPDIHLRERLAALTLLPESRIQVWFQNRRAK  
 SRRQSGKSFQPLSSRRGVFLHCPAPGTEARCLKPQLPLEADVNHVDPDMSMTGGVCTSGSQSFETYSSLS  
 EDIGSKLDSWEEHIFSALGNF

TRTRPLEQKLISEEDLAANDILDYKDDDDKV

**Restriction Sites:** SgfI-MluI

**Cloning Scheme:**

Cloning sites used for ORF Shuttling:



\* The last codon before the Stop codon of the ORF

**ACCN:** NM\_013729

**ORF Size:** 696 bp

**OTI Disclaimer:** The molecular sequence of this clone aligns with the gene accession number as a point of reference only. However, individual transcript sequences of the same gene can differ through naturally occurring variations (e.g. polymorphisms), each with its own valid existence. This clone is substantially in agreement with the reference, but a complete review of all prevailing variants is recommended prior to use. [More info](#)

**OTI Annotation:** This clone was engineered to express the complete ORF with an expression tag. Expression varies depending on the nature of the gene.

**Components:** The ORF clone is ion-exchange column purified and shipped in a 2D barcoded Matrix tube containing 10ug of transfection-ready, dried plasmid DNA (reconstitute with 100 ul of water).

**Reconstitution Method:**

1. Centrifuge at 5,000xg for 5min.
2. Carefully open the tube and add 100ul of sterile water to dissolve the DNA.
3. Close the tube and incubate for 10 minutes at room temperature.
4. Briefly vortex the tube and then do a quick spin (less than 5000xg) to concentrate the liquid at the bottom.
5. Store the suspended plasmid at -20°C. The DNA is stable for at least one year from date of shipping when stored at -20°C.

**RefSeq:** [NM\\_013729.3](#), [NP\\_038757.1](#)

**RefSeq Size:** 2294 bp

**RefSeq ORF:** 696 bp

**Locus ID:** 27217

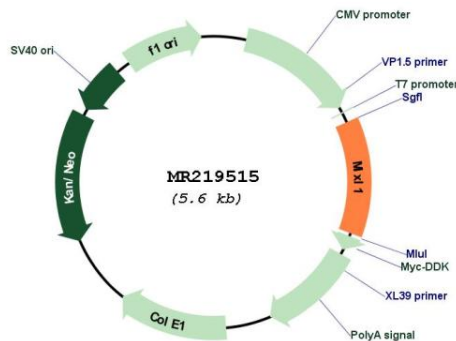
**UniProt ID:** [Q9WUJ0](#)

**Cytogenetics:** 1 H4

**MW:** 24.8 kDa

**Gene Summary:** Transcription factor that play a central role in proper axial mesendoderm morphogenesis and endoderm formation. Required for efficient differentiation of cells from the primitive streak stage to blood, by acting early in the recruitment and/or expansion of mesodermal progenitors to the hemangioblastic and hematopoietic lineages. Also involved in the morphogenesis of the heart and the gut during embryogenesis. Acts as a negative regulator of brachyury expression.[UniProtKB/Swiss-Prot Function]

**Product images:**



Circular map for MR219515