

Product datasheet for **MR219492**

Acvr2a (NM_007396) Mouse Tagged ORF Clone

Product data:

Product Type:	Expression Plasmids
Product Name:	Acvr2a (NM_007396) Mouse Tagged ORF Clone
Tag:	Myc-DDK
Symbol:	Acvr2a
Synonyms:	ActrIIa; Acvr2; TactrII
Mammalian Cell Selection:	Neomycin
Vector:	pCMV6-Entry (PS100001)
E. coli Selection:	Kanamycin (25 ug/mL)



[View online »](#)

ORF Nucleotide Sequence:

>MR219492 representing NM_007396
 Red=Cloning site Blue=ORF Green=Tags(s)

CTATAGGGCGGCCGGAATTCGTCGACTGGATCCGGTACCGAGGAGATCTGCC
 GCC**CGCATCGCC**

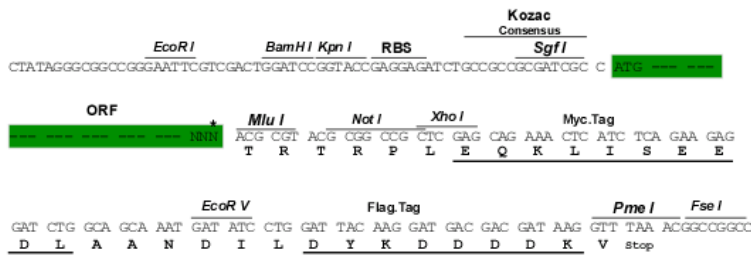
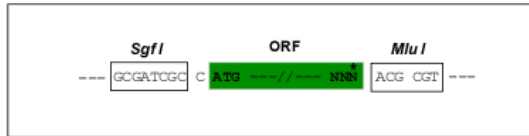
ATGGGAGCTGCTGCAAAGTTGGCGTTCCGCGTCTTTCTTATCTCTTGCTCTTCAGGTGCTATACTTGGCA
 GATCAGAAACTCAGGAGTGCTTTTTCTTTAATGCTAATTGGGAAAGAGACAGAACCAACCGACTGGTGT
 TGAACCTTGCTATGGTGATAAAGATAAACGCGCATTGTTTTGCTACCTGGAAGAAATTTCTGGTTCC
 ATTGAAATAGTGAAGCAAGGTTGTTGGCTGGATGATATCAACTGCTATGACAGGACTGATTGTATAGAAA
 AAAAAGACAGCCCTGAAGTGTACTTTTTGTTGCTGTGAGGGCAATATGTGTAATGAAAAGTTCTCTTATTT
 TCCGGAGATGGAAGTACACAGCCCACTCAAATCCTGTTACACCGAAGCCACCTTATTACAACATTCTG
 CTGTATTCCTTGGTACCACTAATGTTAATTGCAGGAATTGTCATTTGTGCATTTTGGGTGTACAGACATC
 ACAAGATGGCCTACCCTCTGTACTTGTCTACTCAAGACCCAGGACCACCCACCTTCCCATTACT
 AGGTTGAAGCCATTGCAGCTGTTAGAAGTGAAGCAAGGGGAAGATTTGTTGTGTCTGAAAAGCCAG
 TTGCTCAATGAATATGTGGCTGTCAAAATATTTCCAATACAGGACAAACAGTCTGGCAGAAATGAATATG
 AAGTCTATAGTCTACCTGGAATGAAGCATGAGAACATACTACAGTTCAATGGTGCAGAGAAAAGAGGCAC
 CAGTGTGGATGTGGACCTGTGGCTAATCACAGCATTTCATGAAAAGGGCTCACTGTGAGACTTTCTTAAG
 GCTAATGTGGTCTCTTGAAGTAACTTTGTCATATTGCAGAAACCATGGCTAGAGGATTGGCATATTTAC
 ATGAGGATATACCTGGCTTAAAAGATGGCCACAAGCCTGCAATCTCTCACAGGGACATCAAAAGTAAAA
 TGTGCTGTTGAAAACAATCTGACAGCTGCATTGCTGACTTTGGGTTGGCCTTAAAGTTCGAGGCTGGC
 AAGTCTGCAGGTGACACCCATGGGCAGGTTGGTACCCGGAGGTATATGGCTCCAGAGGTGTTGGAGGTG
 CTATAAACTTCCAAAGGGACGCATTTCTGAGGATAGATATGTACGCCATGGGATTAGTCTATGGGAAT
 GGCTTCTCGTTGCACTGCTGCAGATGGACCCGTAGATGAGTACATGTTACCATTGAGGAAGAAATTGGC
 CAGCATCCATCTCTGAAGATATGCAGGAAGTTGTTGTGCATAAAAAAAGAGGCCTGTTTTAAGAGATT
 ATTGGCAGAAACATGCAGGAATGGCAATGCTCTGTGAAACGATAGAAGAATGTTGGGATCATGATGCAGA
 AGCCAGGTTATCAGCTGGATGTGTAGGTGAAAGAATTACTCAGATGCAAAGACTAACAAATATCATTACT
 ACAGAGGACATTGTAACAGTGGTCACAATGGTGACAAATGTTGACTTTCCTCCAAAGAATCTAGTCTA

**ACGCGTACGCGGCCGCTCGAGCAGAAACTCATCTCTGAAGAGGATCTGGCAGCAAATGATATCTGGATT
 ACAAGGATGACGACGATAAGGTTTAA**

**Restriction Sites:
 Cloning Scheme:**

Sgfl-MluI

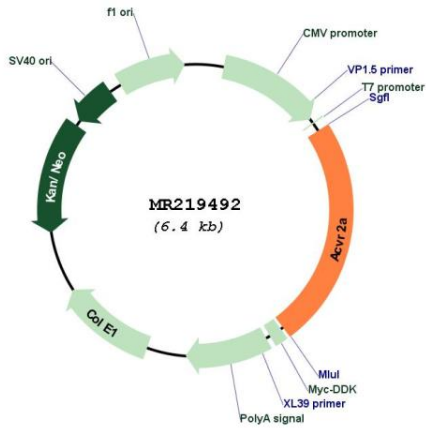
Cloning sites used for ORF Shuttling:



* The last codon before the Stop codon of the ORF

ACCN:	NM_007396
ORF Size:	1539 bp
OTI Disclaimer:	<p>Due to the inherent nature of this plasmid, standard methods to replicate additional amounts of DNA in E. coli are highly likely to result in mutations and/or rearrangements. Therefore, OriGene does not guarantee the capability to replicate this plasmid DNA. Additional amounts of DNA can be purchased from OriGene with batch-specific, full-sequence verification at a reduced cost. Please contact our customer care team at custsupport@origene.com or by calling 301.340.3188 option 3 for pricing and delivery.</p> <p>The molecular sequence of this clone aligns with the gene accession number as a point of reference only. However, individual transcript sequences of the same gene can differ through naturally occurring variations (e.g. polymorphisms), each with its own valid existence. This clone is substantially in agreement with the reference, but a complete review of all prevailing variants is recommended prior to use. More info</p>
OTI Annotation:	This clone was engineered to express the complete ORF with an expression tag. Expression varies depending on the nature of the gene.
Components:	The ORF clone is ion-exchange column purified and shipped in a 2D barcoded Matrix tube containing 10ug of transfection-ready, dried plasmid DNA (reconstitute with 100 ul of water).
Reconstitution Method:	<ol style="list-style-type: none"> 1. Centrifuge at 5,000xg for 5min. 2. Carefully open the tube and add 100ul of sterile water to dissolve the DNA. 3. Close the tube and incubate for 10 minutes at room temperature. 4. Briefly vortex the tube and then do a quick spin (less than 5000xg) to concentrate the liquid at the bottom. 5. Store the suspended plasmid at -20°C. The DNA is stable for at least one year from date of shipping when stored at -20°C.
RefSeq:	NM_007396.4 , NP_031422.3
RefSeq Size:	5681 bp
RefSeq ORF:	1542 bp
Locus ID:	11480
UniProt ID:	P27038
Cytogenetics:	2 28.38 cM
MW:	58.3 kDa
Gene Summary:	<p>On ligand binding, forms a receptor complex consisting of two type II and two type I transmembrane serine/threonine kinases. Type II receptors phosphorylate and activate type I receptors which autophosphorylate, then bind and activate SMAD transcriptional regulators. Receptor for activin A, activin B and inhibin A. Mediates induction of adipogenesis by GDF6 (PubMed:23527555).[UniProtKB/Swiss-Prot Function]</p>

Product images:



Circular map for MR219492