

## Product datasheet for **MR219455**

### Tlr12 (NM\_205823) Mouse Tagged ORF Clone

#### Product data:

Product Type:	Expression Plasmids
Product Name:	Tlr12 (NM_205823) Mouse Tagged ORF Clone
Tag:	Myc-DDK
Symbol:	Tlr12
Synonyms:	Gm1365; Tlr11
Mammalian Cell Selection:	Neomycin
Vector:	pCMV6-Entry (PS100001)
E. coli Selection:	Kanamycin (25 ug/mL)



[View online »](#)

ORF Nucleotide  
Sequence:

>MR219455 representing NM\_205823  
 Red=Cloning site Blue=ORF Green=Tags(s)

TTTTGTAATACGACTCACTATAGGGCGGCCGGAATTCGTCGACTGGATCCGGTACCGAGGAGATCTGCC  
 GCC**CGCATCGCC**

ATGGGCAGGTAAGTGGCTGCTGCCAGGTCTCCTCCTTTCCCTGCCTCTGGTAACTGGTGGAGCACTTCCA  
 ACTGCCTGGTGACCGAAGGCTCCCGACTGCCCCTGGTCTCCCGCTATTTACATTCTGCCGCCATTCCAA  
 GCTATCCTTTCTTGTGCATGCCTCTCCGTGAGCAACCTGACACAGACCTTGAAGTGTACCTCGGACT  
 GTGGAGGGGCTCTGCCTCGGTGGTACTGTGTCTACTCTGCTTCCAGATGCTTTCTCTGCTTTTCTGGTC  
 TCAAGGCTCTGGCACTGAGTCTGCACCTTACCCAATTCTGCCAGGAGCTCTCCGGGGTCTGGGACAGTT  
 GCAGAGCCTCTCTTTTTGACTCTCCTTTAGGAGATCTCTTTTCTACCTCTGATGCCTTCAGTGAC  
 CTGATTTCCCTCCAGAGACTCCATATCTCTGGCCCTTGCCTGGATAAGAAGGCAGGCATCCGCCTGCCTC  
 CCGGTCTGCAATGGCTGGGTGTCAGCTCAGTTGCATTACAGGACGTGGGAGAGCTGGCTGGTATGTTCCC  
 AGATCTGGTGCAAGGTTCTCCTCCAGGGTTTCGTGGACCCTGCAGAAGTTGGATCTGTCATCCAACCTGG  
 AAGCTGAAGATGGCTAGTCTGGGTCCCTCCAGGGTCTCCAGGTGGAGATTCTGGACCTGACAAGAACAC  
 CACTGGATGCCGTGTGGCTGAAGGGCTGGGACTTCAGAACTCGATGTCTTGTATGCACAGACTGCCAC  
 GGCCGAGCTGGCTGCTGAGGCTGTTGCCACTTTGAGCTGCAGGGCTTGATTGTGAAAGAAAGCAAGATA  
 GGATCTATATCTCAGGAGGCTCTGGCTTCTGCCACAGCTGAAGACCTTGGGTCTTTCAAGCACTGGCC  
 TAACCAAGCTTCCACCAGGCTTCTGACTGCCATGCCTAGGCTTACAGGACTGGAGCTGTCCGAAACCA  
 ACTGCAGAGCGCCGTGCTGTGCATGAATGAGACGGGAGATGTGTCAGGACTCACGACTCTGGATCTGTCA  
 GGCAACAGGTTGCGCATCTGCCTCCAGCCGCTTCTCCTGCTTACCCCACTTGCAGAGCTGCTGCTTC  
 GGTACAACCACTGCTTTCCCTGGAGGGATACCTATTCCAGGAGCTCCAGCAACTAGAGACCTTGAAGT  
 GGATGGAAACCCCTGCTTACCTGGGTAAAGAAGTGGTTGGCGGCTCTGCCTGCATTGACCACCTTAGC  
 TTGCTAGATACCCAAATACGGATGAGCCAGAGCTGGCTTCTGGGGAGCAAAGAATCTGCATACCTTGA  
 GCCTGAAGCTTCCCGCTCTCCCTGCTCCGGCAGTATTGTTCTGCCATGTATCTGACCAGCTTAGAGCT  
 TCATATAGCCTCAGGCACGACGGAGCACTGGACGCTGTCCCAGCGATCTTCTCCTTGGAGACCTTG  
 ACTATAAGCGCGGGGGACTGAAGCTGAAGCTGGGGTCCCAGAATGCTTCTGGGGTCTTCCCTGCTCTC  
 AGAAGCTCTCCCTGCTTAAAGACAGCTTGGATGCCTTCTGCTCCAGGGTACCTCCAACCTTTCTCTG  
 GCAGCTCCCCAACTTCACTCTTGGGGTATGGGGTGTGAAACAGCTCCAGACCCTGCCTTACTACT  
 GGGCTGCCAGCCTACGGGAGCTGAAGCTGGCGTGCCTTCACTCCATAACCCAGCCCGTTCGGTGCAGC  
 TGGAGGAGCTGGTGGGTGACCTTCCACAGCTCCAGGCCTTAGTGCTATCCAGCACAGGCCTCAAGTCACT  
 GTCGGCTGCTGCTTTCCAGCGCCTGCACAGTCTCCAGGCTTAGTGCTAGAATACGAGAAGGACTTGATG  
 CTGCAGGACAGTCTGAGGGAGTACAGCCCTCAGATGCCCACTATATACATTCTGGAGTCAAACCTGG  
 CCTGCCACTGTGCCAATGCGTGGATGGAGCCATGGGTTAAGCGGTCCACTAAAACGTACATATACATAAG  
 AGACAATCGTTATGTCCAGGACAAGACAGGCTCTCTGCTAGGGGTCCCTTCCCTCCTTTCTCTGGGAC  
 CACTGCCCCAGACGTTGGAGCTGAACTCTTTTTGGCTAGTTCTGCCTTGGTGTTCATGCTAATTGCCT  
 TGCTCTCCTCCAAGAAGCCAGGAACCTTGGATCCCCACCTGCAGGCCTTGTTCAGGGTTTGGCTCCA  
 GGGTCTGAGGGGTAAAGGAGACAAGGGGAAGAGGTTCTTTTTGATGATTCTGTGCCACTGCAGGC  
 GACCAGGCTGGGTGATAGAGGAACTTCTGCCTGCTCTGGAGGGCTTCCCTCCAGCTGGCCTGGCCTGC  
 GCCTCTGTCTCCCGAGCGTGACTTTGAGCCTGGTAAGGATGTAGTTGATAATGTGGTAGATAGCATGTT  
 GAGCAGCCGTACCACACTCTGCGTGTGAGTGGGCAAGCCCTGTGTAACCCCGATGCCGCTGGAGCTC  
 CGTTGGCCACCTCTCTCCTCTGGCTGCCCGTCCCCTCAGTGTGCTGCTAGTCTTCTTGAACCCA  
 TTTCTCGGCACCAGCTTCCGGTTACCACAGACTGGCTCGGCTGCTTGAAGAGGAGACTACTGTCTGTG  
 GCCCGAGGAAGAGGAGAGAAAGAGTGGGTTCTGGACTTGCTGAGGAGCAGGCTAGGG

**ACGCGT**ACGCGGCCGCTCGAGCAGAACTCATCTCAGAAGAGGATCTGGCAGCAAATGATATCTGGATT  
 ACAAGGATGACGACGATAAGGTTTAA

Protein Sequence: >MR219455 representing NM\_205823  
 Red=Cloning site Green=Tags(s)

MGRYWLLPGLLLSLPLVTGWSTSNCLVTEGSRPLVSRYFTFCRHSKLSFLAACLSVSNLTQTLEVVPRP  
 VEGLCGGTVSTLLPDAFSAFPGKLVLALSLHLTQLLPGALRGLGQLQSLFFDSPLRRSLFLPPDAFSD  
 LISLQRLHISGPCLDKKAGIRLPPGLQWLVTLSCIQDVGELAGMFPDLVQGSSSRSVSWTLQKLDLSSNW  
 KLKMASPGSLQGLQVEILDLTRTPLDVWLKGLGLQKLDVLYAQTATAELAAEAHAFELQGLIVKESKI  
 GSISQEALASCHSLKTLGLSSTGLTKLPPGFLTAMPRLQRELESGNQLQSAVLCMNETGDVSGLTTLTDL  
 GNRLRILPPAAFSCPLHLRELLLRYNQLLSLEGYLFQELQQLETCLKLDGNPLHLGKNWLAALPALTTLS  
 LLDTQIRMSPEPGFWGAKNLHTLSKLPALPAPAVLFLPMYLTSELEHIASGTTEHWLSPAIFPSLET  
 TISGGGLKLLKGSQNASGVFPALQKLSLLKNSLDAFCSQGTSNLFLWQLPKLQSLRVWAGNSSRCLIT  
 GLPSLRELKSLASLQITQPRSVQLEELVGDLPQLQALVLSSTGLKSLAAAFQRLHSLQVLVLEYEKDLM  
 LQDSLREYSPQMPHYIYILESNLACHCANAWMEPWVVKRSTKYIYIRDNRCPGQDRLSARGSLPSFLWD  
 HCPQTLLEKFLASSALVFMLIALPLLQEARNSWIPYLQALFRVWLQGLRGKGDGKGRFLDFVFSVHCRQ  
 DQGWVIEELLPALEGFLPAGLGLRLCLPERDFEPGKDVVDNVDSMLSSRTTLCVLSGQALCNPRCRL  
 RLATSLLLAAPSPPVLLLVFLEPISRHLPGYHRLARLLRRGDYCLWPEEEERKSGFWTWLRSRLG

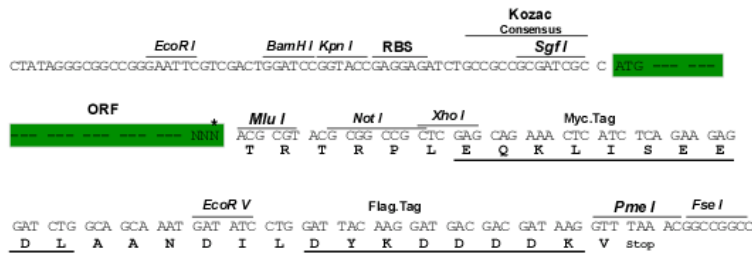
TRTRPLEQKLISEEDLAANDILDYKDDDDKV

Chromatograms: [https://cdn.origene.com/chromatograms/mm9100\\_c10.zip](https://cdn.origene.com/chromatograms/mm9100_c10.zip)

Restriction Sites: SgfI-MluI

Cloning Scheme:

Cloning sites used for ORF Shuttling:

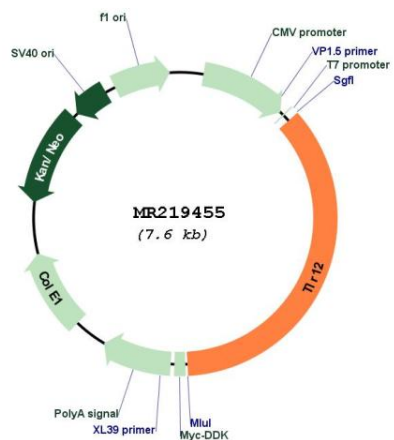


\* The last codon before the Stop codon of the ORF

ACCN: NM\_205823

<b>ORF Size:</b>	2718 bp
<b>OTI Disclaimer:</b>	The molecular sequence of this clone aligns with the gene accession number as a point of reference only. However, individual transcript sequences of the same gene can differ through naturally occurring variations (e.g. polymorphisms), each with its own valid existence. This clone is substantially in agreement with the reference, but a complete review of all prevailing variants is recommended prior to use. <a href="#">More info</a>
<b>OTI Annotation:</b>	This clone was engineered to express the complete ORF with an expression tag. Expression varies depending on the nature of the gene.
<b>Components:</b>	The ORF clone is ion-exchange column purified and shipped in a 2D barcoded Matrix tube containing 10ug of transfection-ready, dried plasmid DNA (reconstitute with 100 ul of water).
<b>Reconstitution Method:</b>	<ol style="list-style-type: none"><li>1. Centrifuge at 5,000xg for 5min.</li><li>2. Carefully open the tube and add 100ul of sterile water to dissolve the DNA.</li><li>3. Close the tube and incubate for 10 minutes at room temperature.</li><li>4. Briefly vortex the tube and then do a quick spin (less than 5000xg) to concentrate the liquid at the bottom.</li><li>5. Store the suspended plasmid at -20°C. The DNA is stable for at least one year from date of shipping when stored at -20°C.</li></ol>
<b>RefSeq:</b>	<a href="#">NM_205823.2</a> , <a href="#">NP_991392.1</a>
<b>RefSeq Size:</b>	3174 bp
<b>RefSeq ORF:</b>	2721 bp
<b>Locus ID:</b>	384059
<b>UniProt ID:</b>	<a href="#">Q6QNU9</a>
<b>Cytogenetics:</b>	4 D2.2
<b>MW:</b>	99.9 kDa
<b>Gene Summary:</b>	Participates in the innate immune response to microbial agents. Acts via MYD88 and TRAF6, leading to NF-kappa-B activation, cytokine secretion and the inflammatory response. Plays a role in preventing infection of internal organs of the urogenital system.[UniProtKB/Swiss-Prot Function]

Product images:



Circular map for MR219455