

Product datasheet for **MR219414**

Slc5a3 (NM_017391) Mouse Tagged ORF Clone

Product data:

Product Type:	Expression Plasmids
Product Name:	Slc5a3 (NM_017391) Mouse Tagged ORF Clone
Tag:	Myc-DDK
Symbol:	Slc5a3
Synonyms:	AA623876; BF642829; Smit1
Mammalian Cell Selection:	Neomycin
Vector:	pCMV6-Entry (PS100001)
E. coli Selection:	Kanamycin (25 ug/mL)



[View online »](#)

ORF Nucleotide
Sequence:

>MR219414 representing NM_017391
Red=Cloning site Blue=ORF Green=Tags(s)

TTTTGTAATACGACTCACTATAGGGCGGCCGGGAATTCGTGACTGGATCCGGTACCGAGGAGATCTGCC
GCCGCGATCGCC

ATGAGGGCTGTAAGGAGCAGCAGACATTGCCGTAGTGGCCCTGTATTTTATCCTGGTCATGTGCATTG
GCTTTTTTGCATGTGGAAATCTAATAGAAGCACTGTGAGTGGATACTTCTGGCCGGGCGCTCTATGAC
CTGGGTGGCGATTGGTGCCTCTCTGTTTGTGAGCAATATTGGGAGTGAACACTTCATTGGCTGGCAGGA
TCTGGAGCAGCAAGTGGATTTGCAGTGGGCGCATGGGAATTCAATGCCTTACTGCTCTTGAACCTCTGG
GATGGGTTTTATCCCCATTTACATCCGGTCAGGGGTATATACCATGCCTGAATACTTGTCCAAGAGGTT
CGGTGGCCATAGGATTCAAGTCTATTTTGCAGCCTTGTCTGCTTCTCTATATCTTACCAAGCTCTCA
GTGGATCTGTATTCAGGGGCCCTTTTATCCAGGAGTCCCTGGGTGGAACCTTTATGTGCTGTGATCC
TGCTCATTGGCATGACTGCTCTGCTGACTGTACCGGAGGCCCTTGTGAGTGTCTACACAGACTCT
GCAGGCCCTGCTCATGATCATTGGGGCGCTCACACTTATGTTTATTAGCATGGTGAAGATTGGAGGGTTT
GAGGAAGTTAAGAGAAGGTACATGTTGGCTCACCTGATGTTGCTTCCATTTTGTGAAGTACAACCTTT
CCAACACAAATGCTTGTATGGTCCATCCTAAGGCGAATGCCCTAAAAATGTTGAGAGACCAACAGATGA
AGATGTTCCATGGCCTGGATTCACTTCTGGGCAAAACCCAGCCTCGGTATGGTACTGGTGTGCTGACCAA
GTCATCGTACAGAGGGTCTAGCAGCAAAAACATTGCTCATGCCAAAGGCTCCACTCTAATGGCTGGCT
TCTTGAAGCTTCTACCAATGTTTATCATAGTGTACCAGGAATGATTTCCAGGATAGTGTGTTGCTGATGA
GATAGCTTGCATCAACCCAGAAGCACTGCATGCAAGTGTGGAAGCAGAGCTGGCTGCTCCAATATTGCT
TACCCACGCCCTGGTGTGACTTGGTTCCTGTGGCCCTTCGGGCGCTGATGATGGCAGTGTGATGTCAG
CTCTGATGAGTACTGGACTCCATCTTAAACAGCGCCAGTACCATATTCACCCTCGATGTGACAAACT
TATCCGCAAGAGTGAAGCTCCCGGAACTAATGATTGTGGCAGGATATTTGTGGCTTTTATGGTTGTC
ATCAGCATAGCATGGGTGCCAATTATTGTGGAGATGCAAGGAGGCCAAATGTACCTTTACATCCAGGAGG
TGGCAGATTATCTGACTCCTCCCGTGGCAGCCCTCTTCTTCTGGCAATTTTCTGGAAACGCTGCAATGA
GCAAGGGGCTTTTTATGGTGGAATGGCAGGCTTTGTTCTTGGAGCTGTCCGTTTGATACTGGCTTTTACC
TACCGTGTCTCTGAGTGTGATCAACCTGATAACAGGCCAGGCTTCATCAAAGACATCCATTATATGTACG
TGGCTACGGCATTATTTGGATCACAGGACTCATTACTGTGATTGTTAGTCTTCTCACACCCTCCAC
AAAGATCAGATTCGTACCACTACCTTTTGGTCAAAGAAGACCCTGGTGACAAAGGAGAGCTGTTCTCAG
AAAGACGAACCATACAAAATGCAAGAGAAGAGCATCCTGCAGTGCAGCGAGAATAGCGAAGTCATCAGCC
ATACTATTTCCCAACGGGAAGTCTGAAGACAGCATTAAAGGACTGCAACCTGAAGACGTTAATCTGCTGGT
GACATGCCGAGAAGAGGGCAACCCAGTGGCTTCCATGGGTCAATCAGAGGCGAAGAACCCAGTAGATGCT
TATTCCAATGGGCAAGCAGCTCTCATGGGTGAGAGAGAAAAGAGAGAAGGAAACGGAAAATAGAAGCCGGT
ATTGGAAGTTCATAGACTGGTTTTGTGGCTTTAAGAGTAAAAGCCTTAGCAAGAGGAGCCTCAGAGACTT
GATGGATGAGGAGGCTGTGTGTTTACAAATGTTAGAAGAGACTCCACAAGTTAAAGTGATCCTAACATT
GGACTTTTTGCTGTGTGTTCACTTGAATTTTCATGTTTGTGTTATTTCTCCTTA

ACGCGTACGCGGCCGCTCGAGCAGAACTCATCTCAGAAGAGGATCTGGCAGCAAATGATATCCTGGATT
ACAAGGATGACGACGATAAGGTTTAA

Protein Sequence: >MR219414 representing NM_017391
Red=Cloning site Green=Tags(s)

MRAVLEAADIIVALYFILVMCIGFFAMWKSNRSTVSGYFLAGRSMTWAIGASLFVSNIGSEHFIFLAG
 SGAASGFVAVGAWEFNALLLQLLGVVFIPIYIRSGVYTMPEYLSKRFGGHRIQVYFAALSLLLYIFTKLS
 YDLYSGALFIQESLGNLYVSVILLIGMTALLVTGGLVAVIYDTLQALLMIIGALTLMVISMVKIGGF
 EEVKRRYMLASPDVASILLKYNLSTNACMVHPKANALKMLRDPDDEDVWPWPGFILGQTPASVWYWCADQ
 VIVQRVLAAKNIAHAKGSTLMAGFLKLLPMFIIIVPGMISRIVFADEIACINPEHCMQVCGSRAGCSNIA
 YPRLVMTLVPVGLRGLMMAVMI AALMSDLDSIFNSASTIFTLDVYKLRKSASSRELMIVGRIFVAFMVV
 ISIAWVPIIVEMQGGQMYLYIQEVADYLTTPVAALFLLAIFWKRCNEQGAFYGGMAGFVLGAVRLILAF
 YRAPECDQPDNRPGFIKDIHYMYVATALFWITGLITVIVSLLTPPPTKDQIRTTTFSKTKLVTKESCSQ
 KDEPYKMQEKSILQCSENSEVISHTIPNGKSEDSIKGLQPEDVNLLVTCREEGNPVASMGHSEAEPTVDA
 YSNGQAALMGEREREKETENRSRYWKFIDWFCGFKSKSLSKRSLRDLMD EEA VCLQMLEETPQVKVILNI
 GLFAVCSLGIFMVFYFSL

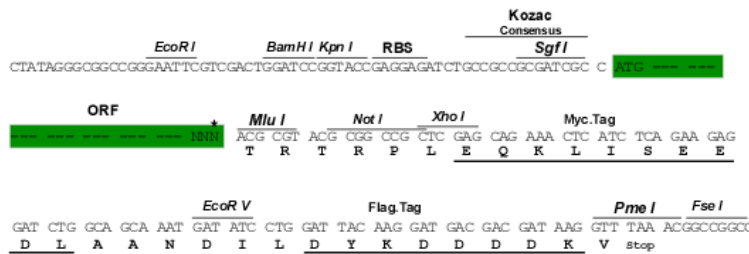
TRTRPLEQKLI SEEDLAANDILDYKDDDDKV

Chromatograms: https://cdn.origene.com/chromatograms/mm9013_f04.zip

Restriction Sites: SgfI-MluI

Cloning Scheme:

Cloning sites used for ORF Shuttling:



* The last codon before the Stop codon of the ORF

ACCN: NM_017391

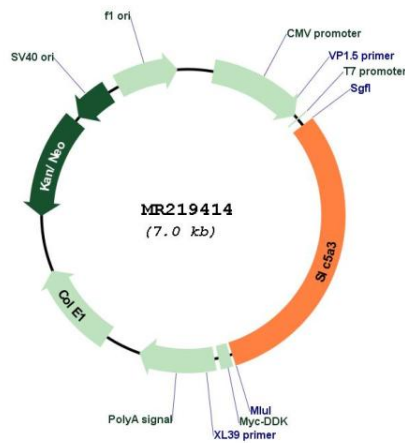
ORF Size: 2154 bp

OTI Disclaimer: The molecular sequence of this clone aligns with the gene accession number as a point of reference only. However, individual transcript sequences of the same gene can differ through naturally occurring variations (e.g. polymorphisms), each with its own valid existence. This clone is substantially in agreement with the reference, but a complete review of all prevailing variants is recommended prior to use. [More info](#)

OTI Annotation: This clone was engineered to express the complete ORF with an expression tag. Expression varies depending on the nature of the gene.

- Components:** The ORF clone is ion-exchange column purified and shipped in a 2D barcoded Matrix tube containing 10ug of transfection-ready, dried plasmid DNA (reconstitute with 100 ul of water).
- Reconstitution Method:**
1. Centrifuge at 5,000xg for 5min.
 2. Carefully open the tube and add 100ul of sterile water to dissolve the DNA.
 3. Close the tube and incubate for 10 minutes at room temperature.
 4. Briefly vortex the tube and then do a quick spin (less than 5000xg) to concentrate the liquid at the bottom.
 5. Store the suspended plasmid at -20°C. The DNA is stable for at least one year from date of shipping when stored at -20°C.
- RefSeq:** [NM_017391.3](#), [NP_059087.2](#)
- RefSeq Size:** 10918 bp
- RefSeq ORF:** 2157 bp
- Locus ID:** 53881
- UniProt ID:** [Q9JKZ2](#)
- Cytogenetics:** 16 C4
- MW:** 80 kDa
- Gene Summary:** Prevents intracellular accumulation of high concentrations of myo-inositol (an osmolyte) that result in impairment of cellular function.[UniProtKB/Swiss-Prot Function]

Product images:



Circular map for MR219414