

Product datasheet for MR219382

Mapre2 (NM_001162941) Mouse Tagged ORF Clone

Product data:

Product Type:	Expression Plasmids
Product Name:	Mapre2 (NM_001162941) Mouse Tagged ORF Clone
Tag:	Myc-DDK
Symbol:	Mapre2
Synonyms:	AI314113; C820009F03Rik; D18Abb1e; EB1; EB2; RP1
Mammalian Cell Selection:	Neomycin
Vector:	pCMV6-Entry (PS100001)
E. coli Selection:	Kanamycin (25 ug/mL)
ORF Nucleotide Sequence:	>MR219382 representing NM_001162941 Red=Cloning site Blue=ORF Green=Tags(s)

TTTTGTAATACGACTCACTATAGGGCGGCCGGAATTCGTCGACTGGATCCGGTACCGAGGAGATCTGCC
GCC**CGATCGCC**

ATGAAACAGATCAGAGATCAACGGGTAATCAGAAAGGGTCCCCAGAAGCACCATTCACTTCAACAGCCAG
GGAGAGTGCCTGGATGTTCAAATTGGGGAATGGCGGTCAATGTGTATTCTACCTCGATAACCCAGGAGAC
TATGAGCAGGCATGACATCATTGCATGGGTCAATGACATCGTGTCTTAACTACACAAAAGTGGAAACAG
CTCTGTTCAAGGAGCAGCCTATTGCCAGTTCATGGACATGCTCTCCCGGGCTGTATTAGTTGAAGAAAG
TAAATCCAAGCAAAGTTGGAGCATGAGTATATTCACAACCTTAACTTCTGCAAGCATCCTTTAAACG
GATGAATGTTGATAAGGTAATCCAGTGGAGAAGCTGGTAAAGGGCGTTTCCAAGACAACCTGGATTTT
ATTCAGTGGTTTAAAGATTCTACGATGCTAACTATGACGGGAAGGAGTACGATCCTGTTGAGGCCCGAC
AAGGGCAAGATGCAATTCCTCCCTGACCCTGGTGAACAGATCTTCAACCTGCCAAGAAGTCGCACCA
TGCAAACCTCCCCACAGCAGGCGCGGCTAAGTCAAGTCTGCATCTAAGCCAGGATCCACACCTTCTCGC
CCCTCGTCTGCCAAAAGGGCTTCATCCAGTGGCTCTGCATCCAGATCTGACAAAGATTTAGAAACGCAGG
TCATACAGCTCAACGAGCAGGTACATTCATTGAACTCGCCCTAGAAGGTGTGGAGAAGGAGAGGGATTT
CTACTTCGGGAAGTTGAGAGAGATTGAGCTGCTGTGCCAAGAACATGGGCAGGAGAACGATGACCTCGTG
CAGCGACTAATGGAAGTCTCTACGCTTCCGATGAACAGGAGGGCCAAACGGAAGAGCCAGAAGCAGAGG
AGCAAGCCCATGACCAGCAGCCCCAGCAGCAGGAGGAGTAC

ACGCGTACGCGGCCGCTCGAGCAGAAACTCATCTCAGAAGAGGATCTGGCAGCAAATGATATCCTGGATT
ACAAGGATGACGACGATAAGGTTTAA



[View online »](#)

Protein Sequence: >MR219382 representing NM_001162941
Red=Cloning site Green=Tags(s)

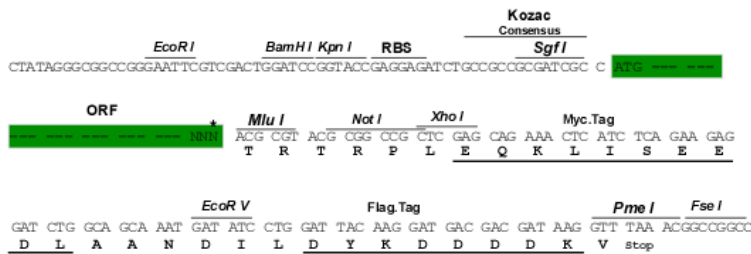
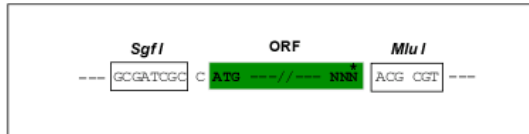
MKQIRDQRVIRKGPQKHSLQQGRVPGCSNWGMVNVYSTSITQETMSRHDIIAWVNDIVSLNYTKVEQ
 LCSGAAYCQFMDMLFPGCISLKKVKFQAKLEHEYIHNFKLLQASFKRMNVDKVIPVEKLVKGRFQDNLDF
 IQWFKKFYDANYDGKEYDPVEARQGQDAIPPPDPGEQIFNLPKSHHANSPTAGAAKSSPASKPGSTPSR
 PSSAKRASSSGSASRSKDLETQVIQLNEQVHSLKLALEGVEKERDFYFGKLR EIELLCQEHGQENDDLV
 QRLMEVL YASDEQEGQTEEPEAEQAHDQQPQQQEY

TRTRPLEQKLISEEDLAANDILDYKDDDDKV

Restriction Sites: SgfI-MluI

Cloning Scheme:

Cloning sites used for ORF Shuttling:



* The last codon before the Stop codon of the ORF

ACCN: NM_001162941

ORF Size: 951 bp

OTI Disclaimer: The molecular sequence of this clone aligns with the gene accession number as a point of reference only. However, individual transcript sequences of the same gene can differ through naturally occurring variations (e.g. polymorphisms), each with its own valid existence. This clone is substantially in agreement with the reference, but a complete review of all prevailing variants is recommended prior to use. [More info](#)

OTI Annotation: This clone was engineered to express the complete ORF with an expression tag. Expression varies depending on the nature of the gene.

Components: The ORF clone is ion-exchange column purified and shipped in a 2D barcoded Matrix tube containing 10ug of transfection-ready, dried plasmid DNA (reconstitute with 100 ul of water).

Reconstitution Method:

1. Centrifuge at 5,000xg for 5min.
2. Carefully open the tube and add 100ul of sterile water to dissolve the DNA.
3. Close the tube and incubate for 10 minutes at room temperature.
4. Briefly vortex the tube and then do a quick spin (less than 5000xg) to concentrate the liquid at the bottom.
5. Store the suspended plasmid at -20°C. The DNA is stable for at least one year from date of shipping when stored at -20°C.

RefSeq: [NM_001162941.1](#), [NP_001156413.1](#)

RefSeq Size: 3993 bp

RefSeq ORF: 954 bp

Locus ID: 212307

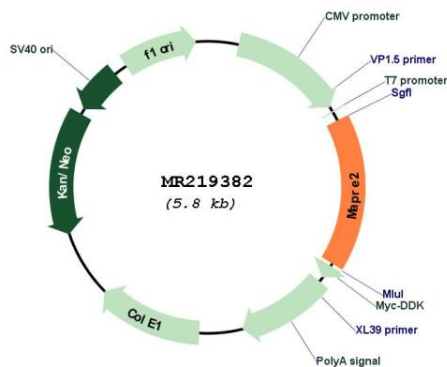
UniProt ID: [Q8R001](#)

Cytogenetics: 18 12.08 cM

MW: 36.5 kDa

Gene Summary: May be involved in microtubule polymerization, and spindle function by stabilizing microtubules and anchoring them at centrosomes. May play a role in cell migration (By similarity).[UniProtKB/Swiss-Prot Function]

Product images:



Circular map for MR219382