

Product datasheet for MR219301

Cox15 (NM_144874) Mouse Tagged ORF Clone

Product data:

Product Type:	Expression Plasmids
Product Name:	Cox15 (NM_144874) Mouse Tagged ORF Clone
Tag:	Myc-DDK
Symbol:	Cox15
Synonyms:	2900026G05Rik
Mammalian Cell Selection:	Neomycin
Vector:	pCMV6-Entry (PS100001)
E. coli Selection:	Kanamycin (25 ug/mL)
ORF Nucleotide Sequence:	>MR219301 representing NM_144874 Red=Cloning site Blue=ORF Green=Tags(s)

TTTTGTAATACGACTCACTATAGGGCGGCCGGAATTCGTCGACTGGATCCGGTACCGAGGAGATCTGCC
GCC**CGATCGCC**

ATGCAACGGTTGCTCCTCCGTCCTGAGGGCCTTGACGGGGAGCCGCAATGTCGGGCTCCTGGTCCCTA
GGGTGGCGTCCAGAACACAGTGTGGCAGCAGCTGTGGCAGCCAGCGTCTCTGAGCCAGGACAGTACAG
CACCATCACTGAAGTGGCTCTGCAATCCGAAAAGGGACAGTGTCCCTCCTTCGAGGGCAGCCGAGCGG
GCGGTGGCCGATGGCTTCTGGTGTGACAGTGGGACAGTGGCTGGAGCAGTTATTCTGGGAGGAGTGACCA
GGTTGACAGAGTCTGGCCTCTCAATGGTAGACTGGCATCTGATAAAGGAGATGAAGCCGCCACAAGCCA
GGAAGAGTGGGAAGCAGAGTTCCAAAAGTACCAGCAATTTCCAGAATTTAAAATCCTGAACCATGACATG
ACGCTGGCGGAATTCAAGTTTATCTGGTACATGGAATACTCACACCGGATGTGGGGGCGAGCTGTAGGCC
TTGCATACATCCTGCCTGCTGCCTACTTTTGGAGAAAAGGGTTGGCTCAACCGTGGCATGAAAGGACGTGT
TCTCGCCCTCTGTGGCTTAGTCTGTTCCAGGGTCTGTTGGGTTGGTATATGGTGAAGTGGATTGGAA
GAAAAACCAGAGTCTATGACATCCCTCGGGTCAGTCAGTACCGCCTCGCAGCCACCTGGGGTCAGCAC
TGGTCTCTACTGTGCCAGTCTGTGGACCTCCCTGTCACTGCTACTGCCTCAGCACAAAGTACCAGAAAC
TCGGCAGCTCCTGTGGTTGAGACGGTTTGTGGTGGCACAGCAGGCTGGTGTTCCTCACGGCTCTCTCA
GGGGCTTTTGTGGCAGGGCTGGATGCTGGCCTCGTTTACAACCTCTTCCCAAAATGGGAGAACTTTGGA
TCCAGAGGACCTCCTGACCTTCTCCCCTGTCTGAAGAATGTTTTGAGAATCCTACCATGGTTTCAGTT
TGATCACAGGCTTCTGGGAGTCAGTCTGTCACTGCCATTACAGTGTCTATTTCTGTCCCGGAGAATC
CCCCTTCTCGAAGAACCAAGATGGCAGCAGTACTCTGTAGCTTTGGCATATGCACAGGTGGCCCTGG
GCATTAGCACTCTGTTATGTACGTCCCCTCCGCTGGCTGCCACACACAGTCAAGGCTCCTTGGCTCT
GCTCAGTGGTGCCTTTGGCTCATGAATGAACTCCGAAGAGTCCCTAAA

ACGGTACGGCGCCGCTCGAGCAGAACTCATCTCAGAAGAGGATCTGGCAGCAATGATATCCTGGATT
ACAAGGATGACGACGATAAGGTTTAA



[View online »](#)

Protein Sequence: >MR219301 representing NM_144874
Red=Cloning site Green=Tags(s)

MQRLLPSLRAL TGSRNVGLLVPRVASRTQCGSSCGSQRPLRPGQYSTITEVALQSGKGTVSLPSRAAER
 AVGRWLLVCSGTVAGAVILGGVTRLTESGLSMVDWHLIKEMKPPTSQEEWEAEFQKYQFPEFKILNHDM
 TLAEFKFIWYMEYSHRMWGRAVGLAYILPAAYFWRKRWLNRMKGRVLALCGLVCFQGLLGWYMKSGLE
 EKPEYDIPRVSQYRLAAHLGSALVLYCASLWTSLSLLLPQHKLPETRQLLWLRRFAGGTAGLVFLTALS
 GAFVAGLDAGLVYNSFPKMGESWIPEDLLTFSPVLKNVFENPTMVQFDHRLLGVTSVTAITVLYFLSRRI
 PLPRRTKMAAVTLLALAYAQVALGISTLLMYVPTPLAATHQSGSLALLSGALWLMNELRRVPK

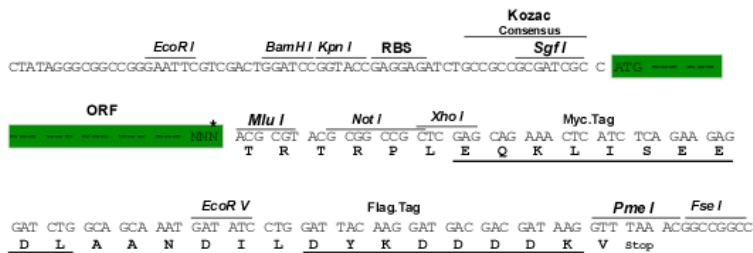
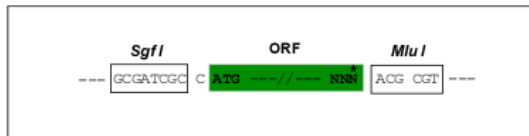
TRTRPLEQKLISEEDLAANDILDYKDDDDKV

Chromatograms: https://cdn.origene.com/chromatograms/mm9029_b07.zip

Restriction Sites: SgfI-MluI

Cloning Scheme:

Cloning sites used for ORF Shuttling:



* The last codon before the Stop codon of the ORF

ACCN: NM_144874

ORF Size: 1239 bp

OTI Disclaimer: The molecular sequence of this clone aligns with the gene accession number as a point of reference only. However, individual transcript sequences of the same gene can differ through naturally occurring variations (e.g. polymorphisms), each with its own valid existence. This clone is substantially in agreement with the reference, but a complete review of all prevailing variants is recommended prior to use. [More info](#)

OTI Annotation: This clone was engineered to express the complete ORF with an expression tag. Expression varies depending on the nature of the gene.

Components: The ORF clone is ion-exchange column purified and shipped in a 2D barcoded Matrix tube containing 10ug of transfection-ready, dried plasmid DNA (reconstitute with 100 ul of water).

Reconstitution Method:

1. Centrifuge at 5,000xg for 5min.
2. Carefully open the tube and add 100ul of sterile water to dissolve the DNA.
3. Close the tube and incubate for 10 minutes at room temperature.
4. Briefly vortex the tube and then do a quick spin (less than 5000xg) to concentrate the liquid at the bottom.
5. Store the suspended plasmid at -20°C. The DNA is stable for at least one year from date of shipping when stored at -20°C.

RefSeq: [NM_144874.4](#), [NP_659123.2](#)

RefSeq Size: 4798 bp

RefSeq ORF: 1242 bp

Locus ID: 226139

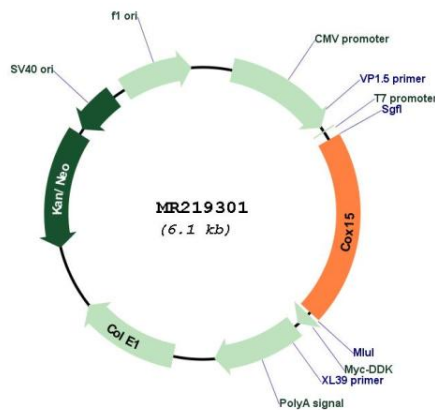
UniProt ID: [Q8BJ03](#)

Cytogenetics: 19 C3

MW: 46.3 kDa

Gene Summary: May be involved in the biosynthesis of heme A.[UniProtKB/Swiss-Prot Function]

Product images:



Circular map for MR219301