

## Product datasheet for **MR219291**

### **Mib2 (NM\_145124) Mouse Tagged ORF Clone**

#### **Product data:**

Product Type:	Expression Plasmids
Product Name:	Mib2 (NM_145124) Mouse Tagged ORF Clone
Tag:	Myc-DDK
Symbol:	Mib2
Synonyms:	2210008I11Rik; skd; Zzank1
Mammalian Cell Selection:	Neomycin
Vector:	pCMV6-Entry (PS100001)
E. coli Selection:	Kanamycin (25 ug/mL)



[View online »](#)

**ORF Nucleotide Sequence:**

>MR219291 representing NM\_145124  
 Red=Cloning site Blue=ORF Green=Tags(s)

TTTTGTAATACGACTCACTATAGGGCGGCCGGAATTCGTCGACTGGATCCGGTACCGAGGAGATCTGCC  
 GCC**CGCATCGCC**

ATGGACCTGGACCCCATGCAGGTGTGCAGGTGGGCATGCGTGTGGTACGCGGAATGGACTGGAATGGG  
 GCCAGCAGGATGGAGGTGAGGGCGGTGTGGGCACCGTGGTGGAGCTTGGCCGCCATGGCAGCCCTCGAC  
 CCCCAGCCGTACAGTTGTCGTTCACTGGGACCAGGGCACACGTACCAACTATCGAGCTGGCTACCAAGGT  
 GCCCATGACCTGTTGCTCTATGACAACGCCAAATCGGTATCCGCCACCCCAATATCATCTGTGACTGCT  
 GCAAGAAACATGGGCTTCGGGGCATGCGTTGGAAGTGCCGCGTCTGCTTTGACTATGACCTCTGCACACA  
 GTGCTACATGCACAACAAGCATGACCTGACCCATGCCTTCGAGCGCTATGAGACATCTCACTCACGCCCG  
 GTTACGCTGAGCCCCGACAGGGCTCCCTCGGATCCCACTGAGGGGCATCTTCAAGGAGCTAAGGTGG  
 TACGAGGCCCTGACTGGGAATGGGGCTCACAAGATGGAGGGGAAGCAAGACAGGTCGTGTGGTGGACAT  
 CCGTGGCTGGGATGTGGAGACAGGCCAAGTGTGGCCAGTGTGACGTGGGCAGATGGAACACGAACGTG  
 TACCGAGTGGGCCACAAGGGCAAGGTGGATCTCAGATGTGTTGGTGGAGCAGCTGGCGGCTTTACTACA  
 AGGAGCACCTCCCAAAGCTTGGCAAGCCAGCAGAGCTGCAGCGCAGGGTGTGCTGATGGCCAGCCCTT  
 CCAGCGTGGGGACAAGGTCAAGTGTCTGCTGGACACAGATGTCCTAAGGGATATGCAAGAAGGCCATGGT  
 GGCTGGAACCCTAGGATGGCAGAGCACAACAGCTTCTGGGTGGGTGATGTGGTCCGGGTCATCGGTGACC  
 TTGACACTGTGAAGCGACTTCAGGCCGGACATGGTGAATGGACCAGCAGCATGGCTCCCGCCCTGGGCCG  
 AGTGGGAAAAGTGGTGAAGGTGTTGGAGATGAAAATGCGTGTGGCGGTTGGCGGTGACGGTGGACC  
 TTCAGCCCCTCTGCCTAGTGGCTACCGCCCTGAGGAAGACGCCAACCTGGATGTGGCTGAGCGTGCCA  
 GAGAGAACAAGCTCACTGAGTGTGGCCCTGGACAAGCTTCGGACCCAGAAGAGTGACCCAGAGCACCC  
 GGGGAGGCTGGTAGTAGAGGCCGCACTAGGAAATGTAGCCGGGCTCTAGATCTTCTGCGGAGGCATCCA  
 GAGCAGGTGGACACCAAGAACCAGGGTAGAACTGCCCTGCAGGTGGCTGCTTACCTGGGCCAGGTAGAGC  
 TGGTGGGCTGCTGCTGCAGGCAAGAGCAAGTATGGACCTGCCGGATGATGAGGGCAACACTGTGCTGCA  
 CTACACAGCCATGGGGAACCAGCCTGAGGCCACAAGGGTCTCCTGAGTGCAGGGTGTGCAGTGGATGCT  
 CGGAATGGCACACGCAGCACAGCCCTACATGTGGCTGTACAGAGGGGCTTCTAGAGGTGGTAAAGATCC  
 TGTGTGAACGTGGTGTGATGTCAACTTGCCGGATGCGCATGCAGACACACCCCTGCATTCTGCCATCTC  
 TGCTGGTGTGGTCCAGCAGCATTGTTGAAGTCTCACCGAGGTCCTGGCATCGATGTCAGTCTGCTACC  
 AATAGCCAGGGCTTCACACTGCTACACCATGCATCCCTCAAGGGCCATGTGCTAGCAGTCAGGAAGATTC  
 TGGCAAGGGCCCCGACGCTGGTGGATGCCAAGAAGGAGGATGGCTTACCAGCATGCATCTGGCAGCCCT  
 CAACAACCACCGGAGGTGGCCAGTCCATAATCCGAGAGGGTCGCTGTGATGTGAATGTGCGGAACCGG  
 AAGCTTCACTCCACTTCATCTGGCTGTACAGCAGGCCACCTGGGGCTGGTACCCTGCTAGTGGACG  
 CAGGCTGCAGTGTCAACACGGAGGACGAGGAGGGTGACACGGCCCTGCATGTGGCACTACAGCGTACCA  
 GCTGTTGCCCTTGTGGCTGACAGGGCTGGGGGAGACCCAGGGCCCTGCAGTGTCTCAAGGCTACAG  
 GCCTCAGGCCCTCCAGGCTGCACAGAGTGTACTGTAGGCGCTGCAGTGGCCTGCTTCTGGCGTTGGAGG  
 GTGCTGATGTGAGCTACGCAAACCACCGCGCCGGAGCCCACTGGACCTGGCCACAGAGGGCCGAGTCT  
 CAAGCCCTTGACAGGCTGTGCCAGCCTTCAGGGAGCGACAGGCAGGTGGCGGTGGGGGTGTGCCCCG  
 GGCCCCGGCATGTGCTGAGTACTCCTAACACCGTGACGAACCTGCACGTGTGGCACGGCAGGGCCAG  
 AAGCTGCCGAGTGCCTGGTGTGCTCGGAGCTGGCATTGCTAATTCTGTTCTCACCGTGTACGACCCGCAC  
 AGTGTGTGAGGAGTGCCTCGAAGGATGAAGAAGTGTATCAGGTGCCAGGTGGTTCATCAGCAAGAAGCTC  
 CGCCAGACGGCTCAGAGGTGGTAAATGCCATCCAGGTGCCCGGCCCTCGGCAACTGGTGGAGGAGC  
 TACAGAGCCGCTACAGGCAGATGGAGGAGCGCATACCTGCCCATCTGCATCGACAGCCACATCCGCT  
 GGTGTTCCAGTGCGGCATGGAGCGTGCAGCCCTGTGGCGCCGCTTAAACGCTGCCCATCTGCCG  
 CAGCCCATCCGACCGCATTAGATCTTCGTG

**ACGCGT**ACGCGGCCGCTCGAGCAGAAACTCATCTCAGAAGAGGATCTGGCAGCAAATGATATCCTGGATT  
 ACAAGGATGACGACGAT AAGGTTTAA

Protein Sequence: >MR219291 representing NM\_145124  
 Red=Cloning site Green=Tags(s)

MDLDPHAGVQVGMRVVRGMDWKWGQQDGGEGGVGTVELGRHGSPSTPDRTVVVQWDQGTRTNYRAGYQG  
 AHDLLL YDNAQIGIRHPNII CDCKKHLRGMRWKCRVCFDYDLCTQCYMHNKHLTHAFERYETSHSRP  
 VTLSPRQGLPRIPLRGIFQGAKVVRGPDWEWSQDGGEGKTRVVDIRGWDVETGRSVASVTWADGTTNV  
 YRVGHKGVLDLRCVGEAAGGFYYKEHLPKLGKPAELQRRVSADGQPFQRGDKVKCLLDDTDVLRDMQEGHG  
 GWNPRMAEHNSFWVGDVVRVIGDLDTVKRLQAGHGEWTDMPALGRVGVKVKVFGDGNLRAVGGQRWT  
 FSPSCLVAYRPEEDANLVAERARENKSSL SVALDKLRTQKSDPEHPGRLVVEAALGNVARALDILLRRHP  
 EQVDTKNQRTALQVAAYLGQVELVRLLLQARASMDLPDDEGNTVLHYTAMGNQPEATRVLLSAGCAVDA  
 RNGTRSTALHVAVQRGFLEVVKILCERGCNVLPDAHADTPLHSAISAGAGASSIVEVLTEVPGIDVTAT  
 NSQGFLLHHSALKGHVLA VRKILARARQLVDAKKEDGFTALHLAALNNHREVAQVLI REGRCDVNVRNR  
 KLQSPLHLAVQQAHLGLVPLLVDAGCSVNTEDEEGDTALHVALQRHQLLPLVADRAGDPGPLQLLSRLQ  
 ASGLPGCTELTVGAAVACFLALEGADVSYANHRGRSPLDLATEGRV LKALQGCAQRFRRERQAGGGGGVPP  
 GPRHVLSTPNTVTNLHVS GTAGPEAAECLVCESELALLILFSPCQHRTVCEE CARRMKKCI RCQVVISKLL  
 RPDGSEVVNAIQVPGPPRQLVEELQSRVQMEERITCPICIDSHIRLVFQCQGHGACAPCGAALNACPICR  
 QPIRDRIQIFV

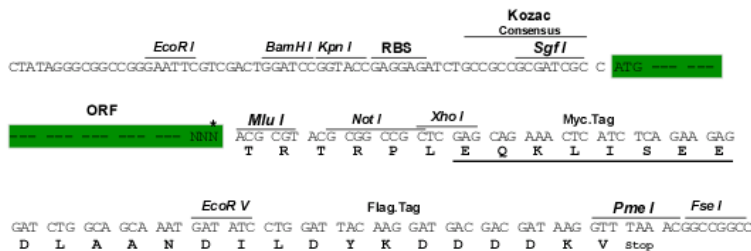
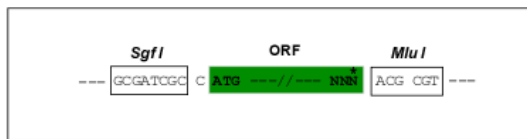
TRTRPLEQKLISEEDLAANDILDYKDDDDKV

Chromatograms: [https://cdn.origene.com/chromatograms/mm9040\\_c06.zip](https://cdn.origene.com/chromatograms/mm9040_c06.zip)

Restriction Sites: SgfI-MluI

Cloning Scheme:

Cloning sites used for ORF Shuttling:



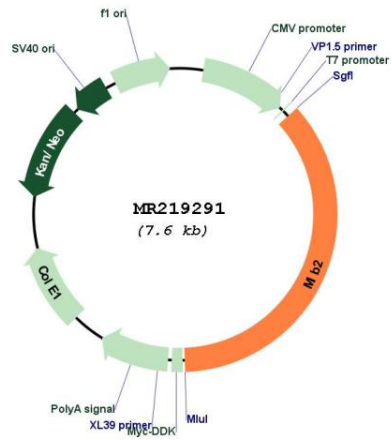
\* The last codon before the Stop codon of the ORF

ACCN: NM\_145124

ORF Size: 2763 bp

<b>OTI Disclaimer:</b>	The molecular sequence of this clone aligns with the gene accession number as a point of reference only. However, individual transcript sequences of the same gene can differ through naturally occurring variations (e.g. polymorphisms), each with its own valid existence. This clone is substantially in agreement with the reference, but a complete review of all prevailing variants is recommended prior to use. <a href="#">More info</a>
<b>OTI Annotation:</b>	This clone was engineered to express the complete ORF with an expression tag. Expression varies depending on the nature of the gene.
<b>Components:</b>	The ORF clone is ion-exchange column purified and shipped in a 2D barcoded Matrix tube containing 10ug of transfection-ready, dried plasmid DNA (reconstitute with 100 ul of water).
<b>Reconstitution Method:</b>	<ol style="list-style-type: none"><li>1. Centrifuge at 5,000xg for 5min.</li><li>2. Carefully open the tube and add 100ul of sterile water to dissolve the DNA.</li><li>3. Close the tube and incubate for 10 minutes at room temperature.</li><li>4. Briefly vortex the tube and then do a quick spin (less than 5000xg) to concentrate the liquid at the bottom.</li><li>5. Store the suspended plasmid at -20°C. The DNA is stable for at least one year from date of shipping when stored at -20°C.</li></ol>
<b>RefSeq:</b>	<a href="#">NM_145124.3</a> , <a href="#">NP_660106.2</a>
<b>RefSeq Size:</b>	3883 bp
<b>RefSeq ORF:</b>	2766 bp
<b>Locus ID:</b>	76580
<b>UniProt ID:</b>	<a href="#">Q8R516</a>
<b>Cytogenetics:</b>	4 E2
<b>MW:</b>	100.7 kDa
<b>Gene Summary:</b>	E3 ubiquitin-protein ligase that mediates ubiquitination of Delta receptors, which act as ligands of Notch proteins. Positively regulates the Delta-mediated Notch signaling by ubiquitinating the intracellular domain of Delta, leading to endocytosis of Delta receptors. [UniProtKB/Swiss-Prot Function]

Product images:



Circular map for MR219291