

Product datasheet for MR219281

Atp9b (NM_015805) Mouse Tagged ORF Clone

Product data:

Product Type:	Expression Plasmids
Product Name:	Atp9b (NM_015805) Mouse Tagged ORF Clone
Tag:	Myc-DDK
Symbol:	Atp9b
Synonyms:	AA934181; Atpc2b; Ilb; MMR
Mammalian Cell Selection:	Neomycin
Vector:	pCMV6-Entry (PS100001)
E. coli Selection:	Kanamycin (25 ug/mL)
ORF Nucleotide Sequence:	>MR219281 representing NM_015805 Red=Cloning site Blue=ORF Green=Tags(s)

TTTTGTAATACGACTCACTATAGGGCGGCCGGAATTCGTCGACTGGATCCGGTACCGAGGAGATCTGCC
GCC**CGATCGCC**

ATGGCGGACCAGATTCCCCTGTACCCCGTGCAGCGCGGGCGCCGAGCCAGCCACAGACGTGCGGCCCT
ACTACAGCTCCGCCGGGCCCGGGCCCGGTGCCGACCGCGCGGCAGGTACCAGCTGGAGGATGAGTCTGC
CCATTTGGATGAAATGCCACTGATGATGTCTGAAGAAGGCTTTGAGAATGATGAAAGTGATTACCACACA
TTACCTCGAGCTAGGATAACACGGAGAAAGAGAGGACTGGAGTGGTTTGTCTGTGGAGGATGGAAGTTCC
TCTGTACCAGTTGCTGTGATTGGCTAATAAATGTTTGTCAAAGGAAGAAAGAGCTAAAAGCTCGAACAGT
ATGGCTTGGATGTCCAGAGAAGTGTGAAGAGAAACATCCTAGGAATTCATCAAAAATCAGAAAACAAT
GTATTTACCTTTATACCTGGGGTTTTGTATGAACAATCAAGTTTTTCTGAATCTCTATTTTCTGGTAG
TGTCTGTCTCACAGTTTGTACCAGCATTGAAAATTGGCTACCTCTACACCTACTGGGCTCCTCTGGGATT
TGTTTTGGCCGTTACGATTGCACGTGAAGCGATTGATGAATTTTCGACGTTTTTCAGCGAGACAAGGAAATG
AATTCACAGTTATATAGCAAGCTTACAGTAAGAGGTAAGTTCAAGTTAAGAGCTCAGACATACAAGTTG
GAGACCTCATCATAGTGGAAAAGAACCAAAGAATCCATCAGATATGGTATTTCTTAGAAGTTGAGAGAA
AGCAGGTTTCATGTTTTATCCGCACGGACCAGCTAGATGGTGAGACTGACTGGAAGCTGAAGTGGCGGTG
AGCTGCACACAACGGCTGCCAGCCCTCGGGGACCTTTTTCTATCAGTGCCTATGTTTATGCTCAGAAGC
CACAACCTGGATATTCATAGCTTTGAAGGAACATTTACCAGGGAAGACAGTGATCCTCCCATTCATGAGAG
TCTCAGCATAGAGAACAACCTCTGTGGCAAGCACTATTGTTGCATCAGGACTGTAATAGGTGTTGTCATT
TATACTGGAAAAGAGACTCGAAGTGAATGAACACATCCAATCCAAAAAATAAGGTTGGTTATTGGACC
TCGAACTCAATCAGCTGACAAAGGCGCTATTTCTGGCTTTAGTTGTTCTTTCTGTTGTTATGGTAACCTT
ACAGGGATTTGCAGGCCCATGGTACCGTAATCTTTTTCGGTTCTCTCTCTTTTCTACATCATTCCC
ATAAGTCTGCGAGTAACTTGGATATGGCAAAGCAGCATATGGATGGATGATTATGAAAGATGAGAATA
TTCTGTTACAGTTGTTCCGACCAGCACAATACCAGAAGAACTTGGACGCTGGTACTACTGACAGA
CAAAACAGGGACGCTCACTCAGAATGAAATGGTATTTAAGCGGCTCCATCTGGGACTGTCTCTACGGA



[View online >](#)

ACGGACACTATGGACGAAATCCAAAGTCACGTCCTGAATTCTACCTGCAGGTACACTCACAGCCAAGTG
GGCACAACCCAAGCTCTGCTCCACTGAGAAGAAGCCAGTCCTCAACGCCTAAAGTCAAGAAGAGCGTCAG
CAGTAGAATCCATGAAGCAGTGAAGCCATTGCCCTTTGTATAATGTCACCTCTGTGTATGAGGCTCGG
GCTGGCATCACTGGGGAGACTGAGTTTGTGAAGCAGACCAAGACTTTAGTGATGAGAACCGCACCTACC
AGGCCTCCAGCCCGATGAGGTGGCACTGGTACGATGGACAGAGAGTGTGGGCTCACTCTGATCAGCAG
GGATCTTGCTTCCATGCAGCTGAAGACCCCAAGTGGCCAGGTCTTGACCTACTGCATCCTACAGATGTTT
CCCTTCACTCCGAGAGCAAGCGGATGGGCATCATAGTCAGAGATGAATCCACAGCAGAAATTACATTCT
ATATGAAAGGTGCTGATGTCGCAATGTCCACCATTGTCCAGTACAATGATTGGCTAGAAGAGGAGTGTGG
AAACATGGCACGAGAGGGCTGCGAACCTTGTGGTAGCCAAGAGGACTCTGACAGAAGAGCAATACCAG
GATTTTGAGAGCCGATACAGTCAAGCCAACTGAGTATCCATGACCGGGCTCTGAAAGTCGCTGCTGTTG
TAGAAAGCCTGGAGAGAGAGATGGAGCTGTTGTGCCTCACTGGGGTGGAGGACCAGCTGCAAGCTGATGT
GAGGCCACACTAGAGATGCTGCGCAATGCAGGGATCAAGATTTGGATGCTAACAGGCGATAAACTGGAA
ACAGCTACTTGTATTGCCAAAAGCTCACACTTGGTGTCCAGAACACAAGACATTCATGTTTTAGACCAG
TAACCAGTCGGGAGAAGCCATTTGGAGCTAAATGCGTTTAGAAGGAAGCATGACTGTGCACTGGTTAT
ATCTGGGATTCTCTGGAGGTCTGCCTGAGGTACTACGAGCATGAACTTGTGGAGCTGGCCTGCCAGTGC
CCTGCTGTGGTCTGCTGCGCTGCTCACCCACCCAGAAGGCCACATCGTGACCTGTTACGCCAGCATA
CCAGAAAGCGCACCTGTGCCATCGGCGACGGAGGGAATGACGTGAGCATGATCCAGGCTGCTGACTGTGG
GATTGGGATTGAAGGAAAGGAGGGCAAACAGGCTTCTCTGGCAGCGGACTTCTCCATCACACAGTTCAGA
CACATCGGCAGGCTGCTCATGGTGCACGGACGGAACAGCTACAAACGGTCTGCAGCACTTGGCCAGTTTG
TCATGCACAGGGGCTCATCATCTCCACCATGCAGGCTGTGTTTTCTTCACTTCTACTTTGCATCTGT
ACCGCTGTACCAGGGATTCCTTATGGTAGGGATGCAACTATCTACCATGTTCCCAAGTGTCTCCTTA
GTGTTGGACCAAGATGTAAGCCAGAGATGGCGATTCTCTACCCAGAGCTGTACAAGGACCTCACCAAGG
GAAGATCCCTTTCTTCAAGACCTTCTCATCTGGGTTTTGATCAGTATTTACCAAGGAGGCATCCTCAT
GTATGGGGCACTGCTGCTTTCGAGGACGAGTTTGTCCATGTTGTGGCCATCTCCTTACAGCGCTGATC
CTGACCGAGCTGCTCATGGTGGCCTGACTATCAGGACGTGGCACTGGCTGATGTTGTGGCGGAGTTCC
TCAGTCTGGGCTGCTATGTCGCCTCACTTGCTTTTCTAAATGAGTATTTGATGTTGCCTTCATCACAAC
CGTGACCTTCTTGTGAAAGTGTGAGCCATCACTGTGGTCACTGCTCCACTCTACGTGCTCAAGTAC
TTGAAGAGAAAGCTGTCCCTCCAGCTACTCCAAGCTGTCTCC

ACGCGTACGCGGCCGCTCGAGCAGAACTCATCTCAGAAGAGGATCTGGCAGCAATGATATCCTGGATT
ACAAGGATGACGACGATAAGGTTTAA

Protein Sequence: >MR219281 representing NM_015805
Red=Cloning site Green=Tags(s)

MADQIPLYPVRSAGAAASHRRAAYSSAGPGPGADRRGRYQLEDESAHLDEMPLMSEEGFENDES DYHT
 LPRARITRRKRGLEWFCGGWKFLCTSCCDWLINVCQRKELKARTVWLGCEKCEKHPRNSIKNQKYN
 VFTFIPGVLYEQKFFLNLYFLVVSCSQFVPALKIGYLTYWAPLGFVLAVTIAREAIDEFRFRQDKEM
 NSQLYSKLTVRGKVQKSSDIQVGLIIIEKNQRIPSDMVFLRTSEKAGSCFIRTDQLDGETDWKLVAV
 SCTQRLPALGDLFSISAYVYAQKPQLDIHSFEGFTRESDPPIHESLSIENTLWASTIVASGTVIGVVI
 YTGKETRSVMNTSNPKNKVGLLDLELNQLTKALFLALVVLVVMVTLQGFAGPWYRNLFRLLLLFSYIIP
 ISLRVNLDMGAAAYGWMIMKDENIPGTVVRTSTIPEELGRLVYLLTDKTGTLTQNMVFKRLHLGTVSYG
 TDTMDEIQSHVLSYLVHSQPSGHNPSSAPLRRSQSSTPKVKKSVSRIHEAVKAIACHNVTPTYEAR
 AGITGETEFAEADQDFSDENRTYQASSPDEVALVRWTESVGLTLISRDLASMLKTPSGQVLTICYILQMF
 PFTSESKRMGIIVRDESTAEITFYMKGADVAMSTIVQYNDWLEEECGNMAREGLRTL VVAKRTL TEEQYQ
 DFESRYSQAKLSIHDRALKVAAVVE SLEREMELLCLTGVEDQLQADVRPTLEMLRNAGIKIWMLTGDKLE
 TATCIAKSSHLVSRTQDIHVFRPVTSRGEAHELNAFRRKHDCALVISGDSLEVCLRYEHELVELACQC
 PAVVCCRCSPQKAHIVTLLRQHTRKRTCAIGDGGNDVSMIQAADCGIGIEGKEGKQASLAADFSITQFR
 HIGRLLMVHGRNSYKRSALGQFVMHRGLIISTMQAVFSSVFYFASVPLYQGFMLVMGYATIYTMFPVSL
 VLDQDVKPEMAILYPELYKDLTKGRSLSFKTLIWWLISIIYQGGILMYGALLLFEDEFVHVVAISFTALI
 LTELLMVALTIRTWHWLMVVAEFLSLGCYVASLAFLENYFDVAFITTVTFLWKVSAITVVSCLPLVYLKY
 LKRKLSPPSYSKLSS

TRTRPLEQKLISEEDLAANDILDYKDDDDKV

Chromatograms: https://cdn.origene.com/chromatograms/mm9002_a11.zip

Restriction Sites: SgfI-MluI

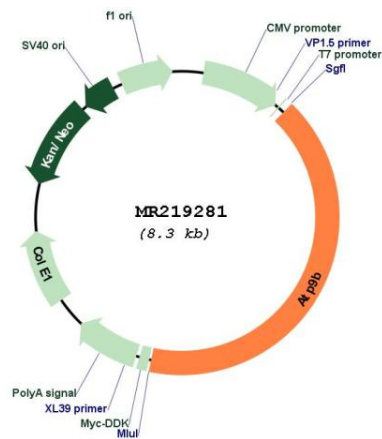
Cloning Scheme:



ACCN: NM_015805

ORF Size: 3405 bp

OTI Disclaimer:	The molecular sequence of this clone aligns with the gene accession number as a point of reference only. However, individual transcript sequences of the same gene can differ through naturally occurring variations (e.g. polymorphisms), each with its own valid existence. This clone is substantially in agreement with the reference, but a complete review of all prevailing variants is recommended prior to use. More info
OTI Annotation:	This clone was engineered to express the complete ORF with an expression tag. Expression varies depending on the nature of the gene.
Components:	The ORF clone is ion-exchange column purified and shipped in a 2D barcoded Matrix tube containing 10ug of transfection-ready, dried plasmid DNA (reconstitute with 100 ul of water).
Reconstitution Method:	<ol style="list-style-type: none"> 1. Centrifuge at 5,000xg for 5min. 2. Carefully open the tube and add 100ul of sterile water to dissolve the DNA. 3. Close the tube and incubate for 10 minutes at room temperature. 4. Briefly vortex the tube and then do a quick spin (less than 5000xg) to concentrate the liquid at the bottom. 5. Store the suspended plasmid at -20°C. The DNA is stable for at least one year from date of shipping when stored at -20°C.
RefSeq:	NM_015805.3 , NP_056620.2
RefSeq Size:	4463 bp
RefSeq ORF:	3408 bp
Locus ID:	50771
UniProt ID:	P98195
Cytogenetics:	18 E3
MW:	128.4 kDa

Product images:


Circular map for MR219281